

Bird species' status and trends reporting format for the period 2008-2012 (Annex 2)

1. Species Information

1.1 Member State	Hungary
1.2.2 Natura 2000 code	A087
1.3 Species name	Buteo buteo
1.3.1 Sub-specific population	
1.4 Alternative species name	
1.5 Common name	egerészölyv
1.6 Season	Breeding (B)

2. Population size

2.1 Year or period	2000-2012
2.2 Population size	a)unit number of pairs (p) b)minimum 15000 c)maximum 30000
2.3 Type of estimate	The best available single figure or range (Best estimate)
2.4 Method used	Estimate based on expert opinion with no or minimal sampling (1)
2.5 Quality	Poor (1)
2.6 Sources	National common bird monitoring scheme (MMM) database. Szép, T., Nagy, K., Nagy, Zs. & Halmos, G. (2012): Population trends of common breeding and wintering birds in Hungary, decline of long-distance migrant and farmland birds during 1999-2012. Ornis Hung MME/BirdLife Hungary Raptor Conservation Group estimate

2.8 Additional information

3. Population trend

3.1 Short-term trend (last 12 years)

3.1.1 Period	1999-2012
3.1.2 Trend direction	Stable (0)
3.1.3 Magnitude	a)Min b)Max
3.1.4 Method used	Estimate based on partial data with some extrapolation and/or modelling (2)
3.1.5 Quality	Moderate (2)
3.1.6 Sources	National common bird monitoring scheme (MMM) database. Szép, T., Nagy, K., Nagy, Zs. & Halmos, G. (2012): Population trends of common breeding and wintering birds in Hungary, decline of long-distance migrant and farmland birds during 1999-2012. Ornis Hungarica 2012. 20(2): 13-63.

3.2 Long-term trend (since c. 1980)

3.2.1 Period	1980-2012
3.2.2 Trend direction	Increase (+)
3.2.3 Magnitude	a)Min 500 b)Max 1000
3.2.4 Method used	Estimate based on expert opinion with no or minimal sampling (1)
3.2.5 Quality	Poor (1)
3.2.6 Sources	Raptor Conservation Group of MME/Birdlife Hungary
3.3 Additional information	Short term trend analysed by TRIM.

4. Breeding distribution map and range size

Bird species' status and trends reporting format for the period 2008-2012 (Annex 2)

4.1 Year or period	2000-2012
4.2 Sensitive species	No
4.3 Distribution map	Yes
4.4 Additional distribution map	No
4.5 Range map	Yes
4.6 Range surface area	93011
4.7 Method used	Estimate based on partial data with some extrapolation and/or modelling (2)
4.8 Quality	Moderate (2)
4.9 Sources	National common bird monitoring scheme (MMM) database.
4.11 Additional information	The distribution and range maps were created on the basis of concrete distribution records as well as data on habitat occurrence.

5. Breeding range trend

5.1 Short-term trend (last 12 years)

5.1.1 Period	2000-2012
5.1.2 Trend direction	Stable (0)
5.1.3 Magnitude	a)Min b)Max
5.1.4 Method used	Complete survey or a statistically robust estimate (3)
5.1.5 Quality	Good (3)
5.1.6 Sources	National common bird monitoring scheme (MMM) database. Raptor Conservation Group of MME/Birdlife Hungary

5.2 Long-term trend (since c. 1980)

5.2.1 Period	1980-2012
5.2.2 Trend direction	Increase (+)
5.2.3 Magnitude	a)Min 100 b)Max 200
5.2.4 Method used	Estimate based on expert opinion with no or minimal sampling (1)
5.2.5 Quality	Poor (1)
5.2.6 Sources	Raptor Conservation Group of MME/Birdlife Hungary
5.3 Additional information	

6. Progress in work related to international Species Action Plans (SAPs), Management Plans (MPs) and Brief Management Statements (BMSs)

6.1 Type of plan	No Plan (NA)
6.2 National plan adopted?	N/A
6.3 Measures linked to SAP/MP/BMS	
6.4 Further Information	

Bird species' status and trends reporting format for the period 2008-2012 (Annex 2)

7. Main pressures and threats

8. SPA coverage and conservation measures

8.1 Population inside the SPA network

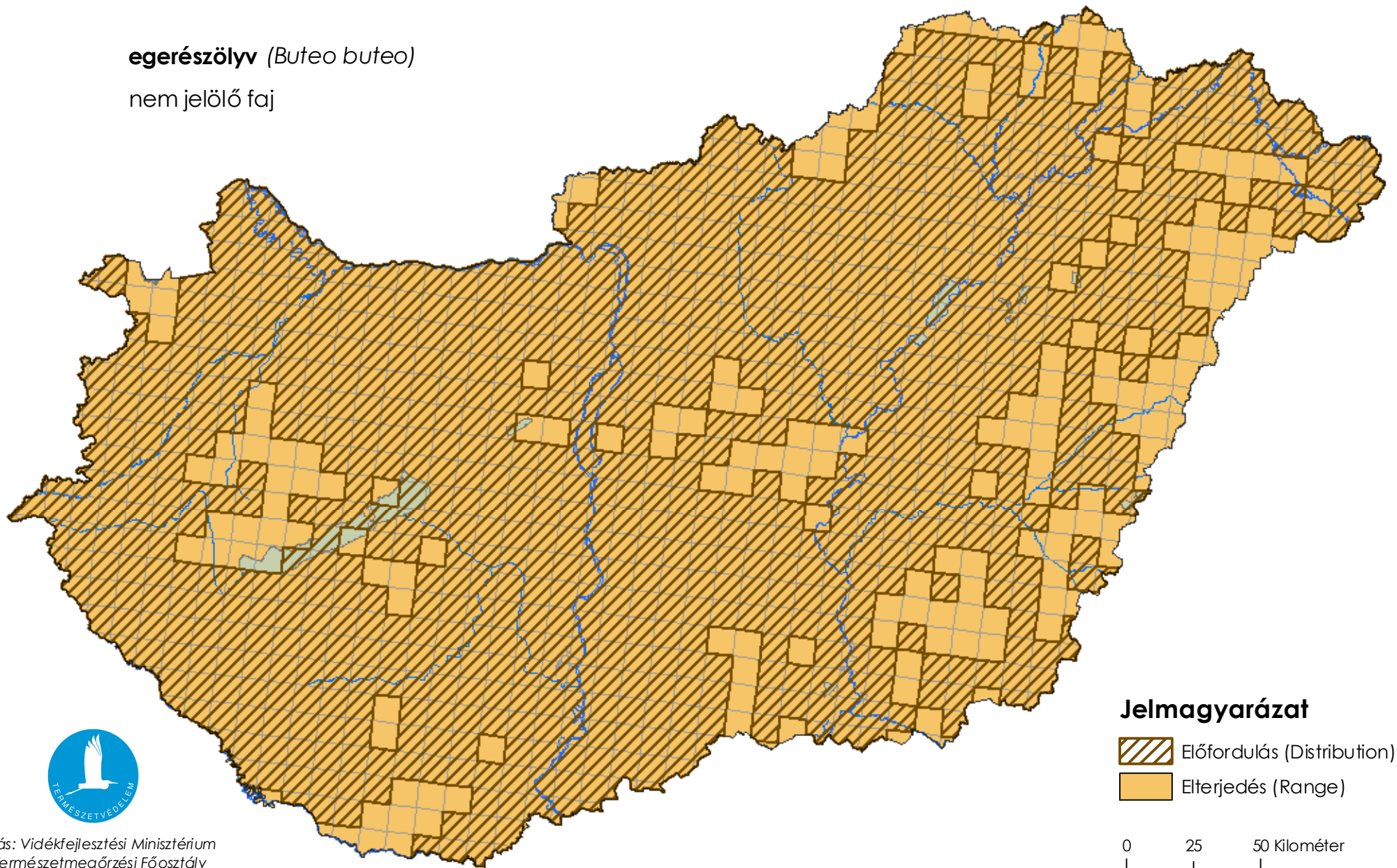
8.1.1 Population size	a)unit	N/A	b)minimum	c)maximum
8.1.2 Method used	N/A			
8.1.3 Short-term trend of population	N/A			

8.2 Conservation Measures



Térképmelléklet a madárvédelmi irányelv 12. cikke alapján készített országjelentéshez 2013.

egerészölyv (*Buteo buteo*)

nem jelölő faj



Jelmagyarázat

-  Előfordulás (Distribution)
-  Elterjedés (Range)

0 25 50 Kilométer

