

Bird species' status and trends reporting format for the period 2008-2012 (Annex 2)

1. Species Information

1.1 Member State	Hungary
1.2.2 Natura 2000 code	A230
1.3 Species name	Merops apiaster
1.3.1 Sub-specific population	
1.4 Alternative species name	
1.5 Common name	gyurgyalag
1.6 Season	Breeding (B)

2. Population size

2.1 Year or period	2000-2012
2.2 Population size	a)unit number of pairs (p) b)minimum 17000 c)maximum 24000
2.3 Type of estimate	Estimate derived from sample survey (95% CI range)
2.4 Method used	Estimate based on partial data with some extrapolation and/or modelling (2)
2.5 Quality	Moderate (2)
2.6 Sources	Breeding bird (MME RTM) database
2.8 Additional information	

3. Population trend

3.1 Short-term trend (last 12 years)

3.1.1 Period	1999-2012
3.1.2 Trend direction	Stable (0)
3.1.3 Magnitude	a)Min b)Max
3.1.4 Method used	Estimate based on partial data with some extrapolation and/or modelling (2)
3.1.5 Quality	Moderate (2)
3.1.6 Sources	Breeding bird (MME RTM) database

3.2 Long-term trend (since c. 1980)

3.2.1 Period	1980-2012
3.2.2 Trend direction	Unknown (x)
3.2.3 Magnitude	a)Min b)Max
3.2.4 Method used	Estimate based on expert opinion with no or minimal sampling (1)
3.2.5 Quality	Poor (1)
3.2.6 Sources	Breeding bird (MME RTM) database
3.3 Additional information	

4. Breeding distribution map and range size

Bird species' status and trends reporting format for the period 2008-2012 (Annex 2)

4.1 Year or period	2000-2012
4.2 Sensitive species	No
4.3 Distribution map	Yes
4.4 Additional distribution map	No
4.5 Range map	Yes
4.6 Range surface area	57465
4.7 Method used	Complete survey or a statistically robust estimate (3)
4.8 Quality	Good (3)
4.9 Sources	Breeding bird (MME RTM) database.
4.11 Additional information	The distribution and range map made by using breeding probability data.

5. Breeding range trend

5.1 Short-term trend (last 12 years)

5.1.1 Period	2000-2012
5.1.2 Trend direction	Decrease (-)
5.1.3 Magnitude	a)Min 0 b)Max 10
5.1.4 Method used	Estimate based on expert opinion with no or minimal sampling (1)
5.1.5 Quality	Poor (1)
5.1.6 Sources	Breeding bird (MME RTM) database

5.2 Long-term trend (since c. 1980)

5.2.1 Period	1980-2012
5.2.2 Trend direction	Unknown (x)
5.2.3 Magnitude	a)Min b)Max
5.2.4 Method used	Estimate based on expert opinion with no or minimal sampling (1)
5.2.5 Quality	Poor (1)
5.2.6 Sources	Breeding bird (MME RTM) database
5.3 Additional information	

6. Progress in work related to international Species Action Plans (SAPs), Management Plans (MPs) and Brief Management Statements (BMSs)

6.1 Type of plan	No Plan (NA)
6.2 National plan adopted?	N/A
6.3 Measures linked to SAP/MP/BMS	
6.4 Further Information	

7. Main pressures and threats

Bird species' status and trends reporting format for the period 2008-2012 (Annex 2)

8. SPA coverage and conservation measures

8.1 Population inside the SPA network

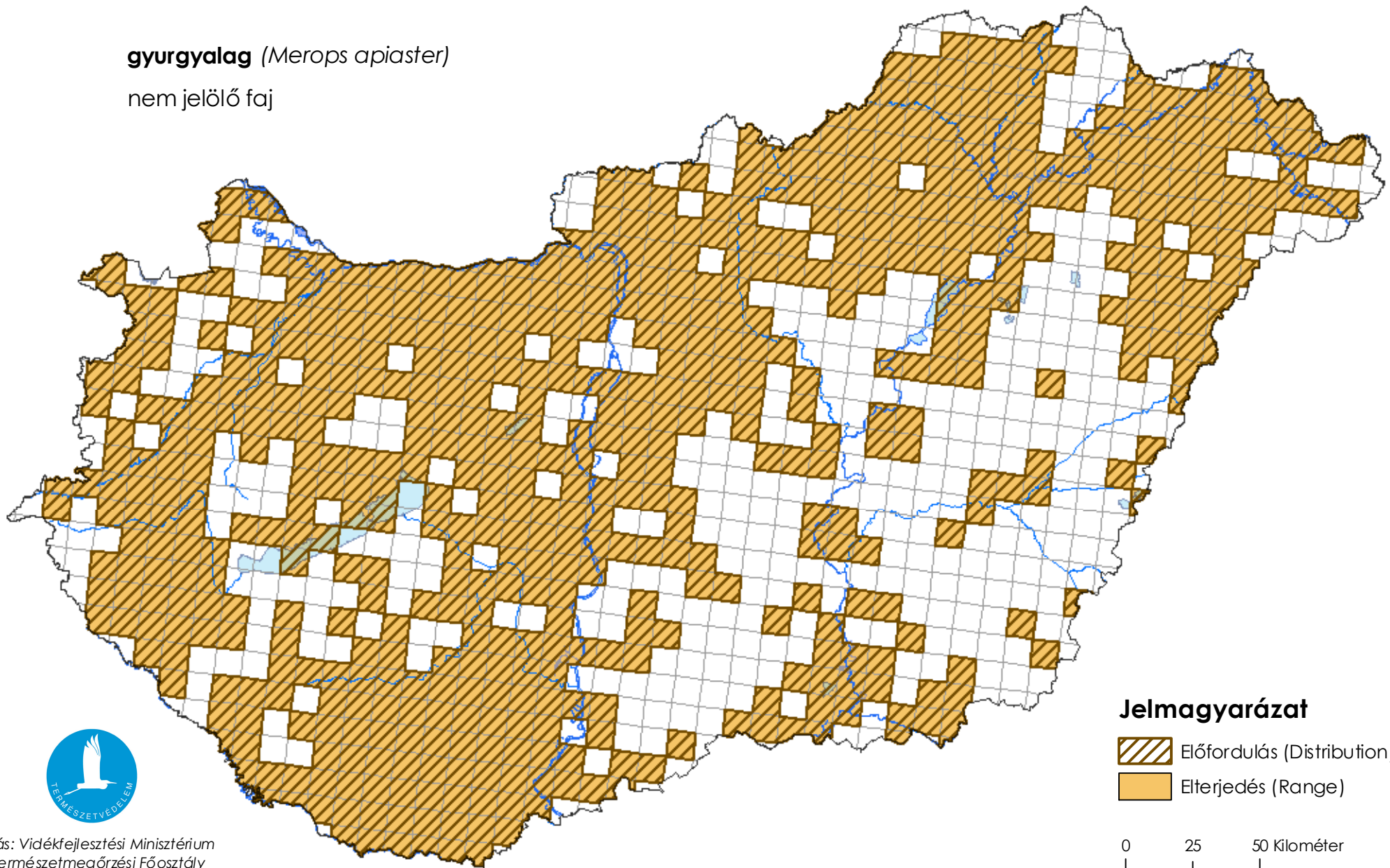
8.1.1 Population size	a)unit	N/A	b)minimum	c)maximum
8.1.2 Method used	N/A			
8.1.3 Short-term trend of population	N/A			

8.2 Conservation Measures



Térképmelléklet a madárvédelmi irányelv 12. cikke alapján készített országjelentéshez 2013.

gyurgyalag (*Merops apiaster*)

nem jelölő faj



Jelmagyarázat

-  Előfordulás (Distribution)
-  Elterjedés (Range)

0 25 50 Kilométer

