

Bird species' status and trends reporting format for the period 2008-2012 (Annex 2)

1. Species Information

1.1 Member State	Hungary
1.2.2 Natura 2000 code	A325
1.3 Species name	Parus palustris
1.3.1 Sub-specific population	
1.4 Alternative species name	
1.5 Common name	barátcinege
1.6 Season	Breeding (B)

2. Population size

2.1 Year or period	2000-2012
2.2 Population size	a)unit number of pairs (p) b)minimum 88600 c)maximum 136500
2.3 Type of estimate	Estimate derived from sample survey (95% CI range)
2.4 Method used	Estimate based on partial data with some extrapolation and/or modelling (2)
2.5 Quality	Moderate (2)
2.6 Sources	National common bird monitoring scheme (MMM) database. Szép, T., Nagy, K., Nagy, Zs. & Halmos, G. (2012): Population trends of common breeding and wintering birds in Hungary, decline of long-distance migrant and farmland birds during 1999-2012. <i>Ornis Hungarica</i> 2012. 20(2): 13-63.

2.8 Additional information

MMM 2000-2012 breeding season counts, evaluated by average value of the surveyed years on 100 m radius.

3. Population trend

3.1 Short-term trend (last 12 years)

3.1.1 Period	1999-2012
3.1.2 Trend direction	Increase (+)
3.1.3 Magnitude	a)Min 61 b)Max 61
3.1.4 Method used	Estimate based on partial data with some extrapolation and/or modelling (2)
3.1.5 Quality	Moderate (2)
3.1.6 Sources	National common bird monitoring scheme (MMM) database. Szép, T., Nagy, K., Nagy, Zs. & Halmos, G. (2012): Population trends of common breeding and wintering birds in Hungary, decline of long-distance migrant and farmland birds during 1999-2012. <i>Ornis Hungarica</i> 2012. 20(2): 13-63.

3.2 Long-term trend (since c. 1980)

3.2.1 Period	1980-2012
3.2.2 Trend direction	Unknown (x)
3.2.3 Magnitude	a)Min b)Max
3.2.4 Method used	Absent data (0)
3.2.5 Quality	Poor (1)
3.2.6 Sources	

3.3 Additional information

Short term trend analysed by TRIM.
Magnitude of the short term trend (min-max): 15 - 125 %
The trend values in 3.1.3. fields is calculated to the reported period by multiplication of the annual change. The annual change value is a multiplicative

Bird species' status and trends reporting format for the period 2008-2012 (Annex 2)

slope calculated by TRIM. The maximum and minimum values presented in this field above are the 95% CI range of the TRIM calculation.

4. Breeding distribution map and range size

4.1 Year or period	2000-2012
4.2 Sensitive species	No
4.3 Distribution map	Yes
4.4 Additional distribution map	No
4.5 Range map	Yes
4.6 Range surface area	67282
4.7 Method used	Estimate based on partial data with some extrapolation and/or modelling (2)
4.8 Quality	Moderate (2)
4.9 Sources	National common bird monitoring scheme (MMM) database.
4.11 Additional information	The distribution and range maps were created on the basis of concrete distribution records as well as data on habitat occurrence.

5. Breeding range trend

5.1 Short-term trend (last 12 years)

5.1.1 Period	2000-2012
5.1.2 Trend direction	Stable (0)
5.1.3 Magnitude	a)Min b)Max
5.1.4 Method used	Estimate based on expert opinion with no or minimal sampling (1)
5.1.5 Quality	Poor (1)
5.1.6 Sources	Consultation with national experts.

5.2 Long-term trend (since c. 1980)

5.2.1 Period	1980-2012
5.2.2 Trend direction	Stable (0)
5.2.3 Magnitude	a)Min b)Max
5.2.4 Method used	Estimate based on expert opinion with no or minimal sampling (1)
5.2.5 Quality	Poor (1)
5.2.6 Sources	Consultation with national experts.
5.3 Additional information	

6. Progress in work related to international Species Action Plans (SAPs), Management Plans (MPs) and Brief Management Statements (BMSs)

6.1 Type of plan	No Plan (NA)
6.2 National plan adopted?	N/A
6.3 Measures linked to SAP/MP/BMS	
6.4 Further Information	

Bird species' status and trends reporting format for the period 2008-2012 (Annex 2)

7. Main pressures and threats

8. SPA coverage and conservation measures

8.1 Population inside the SPA network

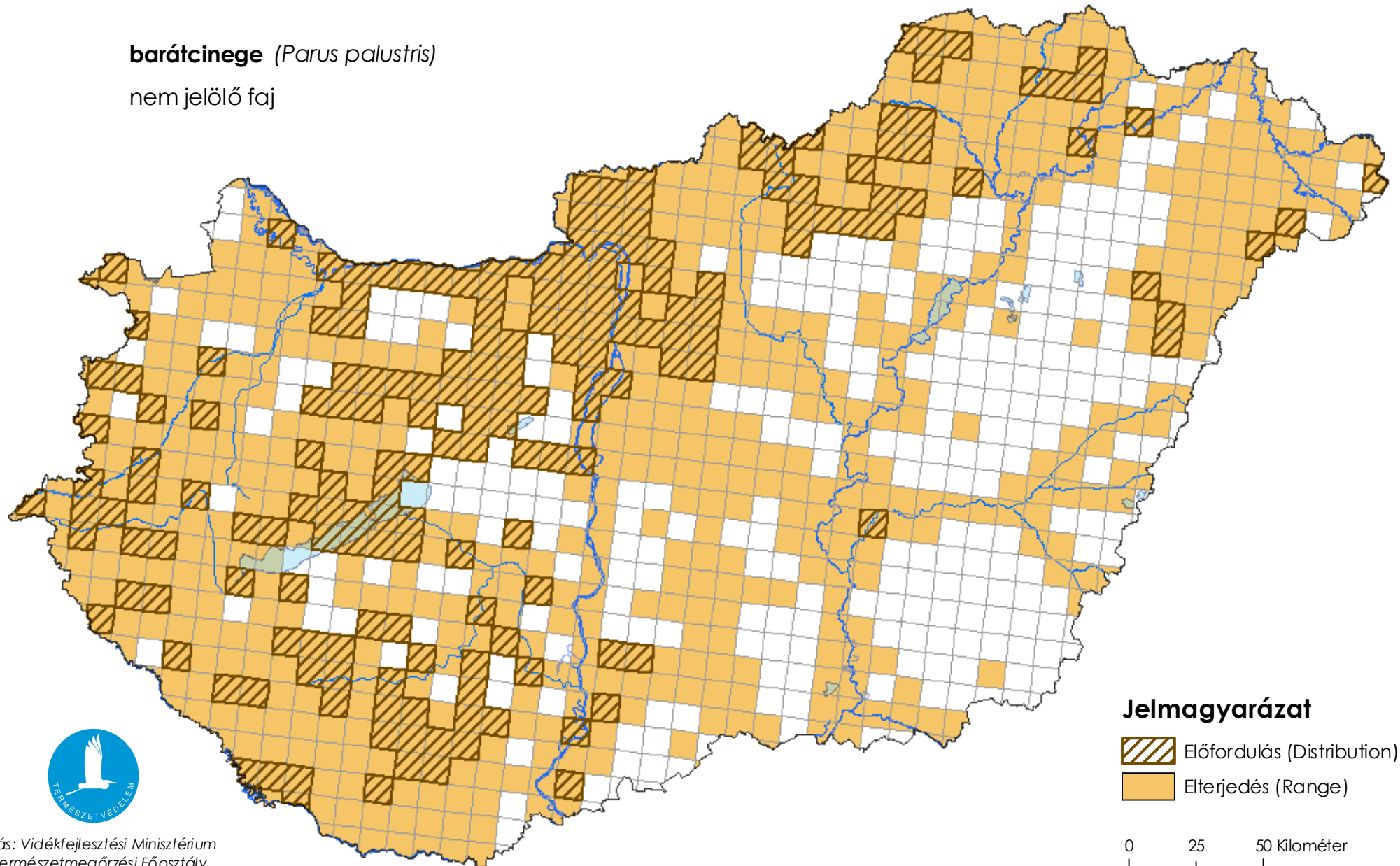
8.1.1 Population size	a)unit	N/A	b)minimum	c)maximum
8.1.2 Method used	N/A			
8.1.3 Short-term trend of population	N/A			

8.2 Conservation Measures



Térképmelléklet a madárvédelmi irányelv 12. cikke alapján készített országjelentéshez 2013.

barátcinege (*Parus palustris*)

nem jelölő faj



Jelmagyarázat

-  Előfordulás (Distribution)
-  Elterjedés (Range)

0 25 50 Kilométer

