

Bird species' status and trends reporting format for the period 2008-2012 (Annex 2)

1. Species Information

1.1 Member State	Hungary
1.2.2 Natura 2000 code	A317
1.3 Species name	Regulus regulus
1.3.1 Sub-specific population	
1.4 Alternative species name	
1.5 Common name	sárgafejű királyka
1.6 Season	Breeding (B)

2. Population size

2.1 Year or period	2000-2012
2.2 Population size	a)unit number of pairs (p) b)minimum 1500 c)maximum 12000
2.3 Type of estimate	Estimate derived from sample survey (95% CI range)
2.4 Method used	Estimate based on partial data with some extrapolation and/or modelling (2)
2.5 Quality	Moderate (2)
2.6 Sources	National common bird monitoring scheme (MMM) database. Szép, T., Nagy, K., Nagy, Zs. & Halmos, G. (2012): Population trends of common breeding and wintering birds in Hungary, decline of long-distance migrant and farmland birds during 1999-2012. <i>Ornis Hungarica</i> 2012. 20(2): 13-63.

2.8 Additional information

3. Population trend

3.1 Short-term trend (last 12 years)

3.1.1 Period	2000-2012
3.1.2 Trend direction	Increase (+)
3.1.3 Magnitude	a)Min 0 b)Max 20
3.1.4 Method used	Estimate based on expert opinion with no or minimal sampling (1)
3.1.5 Quality	Poor (1)
3.1.6 Sources	MME Nomenclator Bizottság (2008): Magyarország madarainak névjegyzéke. <i>Nomenclator avium Hungariae</i> . Magyar Madártani és Természetvédelmi Egyesület, Budapest. p. 278.

3.2 Long-term trend (since c. 1980)

3.2.1 Period	1980-2012
3.2.2 Trend direction	Unknown (x)
3.2.3 Magnitude	a)Min b)Max
3.2.4 Method used	Absent data (0)
3.2.5 Quality	Poor (1)
3.2.6 Sources	
3.3 Additional information	

4. Breeding distribution map and range size

Bird species' status and trends reporting format for the period 2008-2012 (Annex 2)

4.1 Year or period	2000-2012
4.2 Sensitive species	No
4.3 Distribution map	Yes
4.4 Additional distribution map	No
4.5 Range map	Yes
4.6 Range surface area	16006
4.7 Method used	Complete survey or a statistically robust estimate (3)
4.8 Quality	Good (3)
4.9 Sources	Breeding bird (MME RTM) database.
4.11 Additional information	The distribution and range map made by using breeding probability data.

5. Breeding range trend

5.1 Short-term trend (last 12 years)

5.1.1 Period	2000-2012
5.1.2 Trend direction	Unknown (x)
5.1.3 Magnitude	a)Min b)Max
5.1.4 Method used	Absent data (0)
5.1.5 Quality	Poor (1)
5.1.6 Sources	

5.2 Long-term trend (since c. 1980)

5.2.1 Period	1980-2012
5.2.2 Trend direction	Unknown (x)
5.2.3 Magnitude	a)Min b)Max
5.2.4 Method used	Absent data (0)
5.2.5 Quality	Poor (1)
5.2.6 Sources	
5.3 Additional information	

6. Progress in work related to international Species Action Plans (SAPs), Management Plans (MPs) and Brief Management Statements (BMSs)

6.1 Type of plan	No Plan (NA)
6.2 National plan adopted?	N/A
6.3 Measures linked to SAP/MP/BMS	
6.4 Further Information	

7. Main pressures and threats

Bird species' status and trends reporting format for the period 2008-2012 (Annex 2)

8. SPA coverage and conservation measures

8.1 Population inside the SPA network

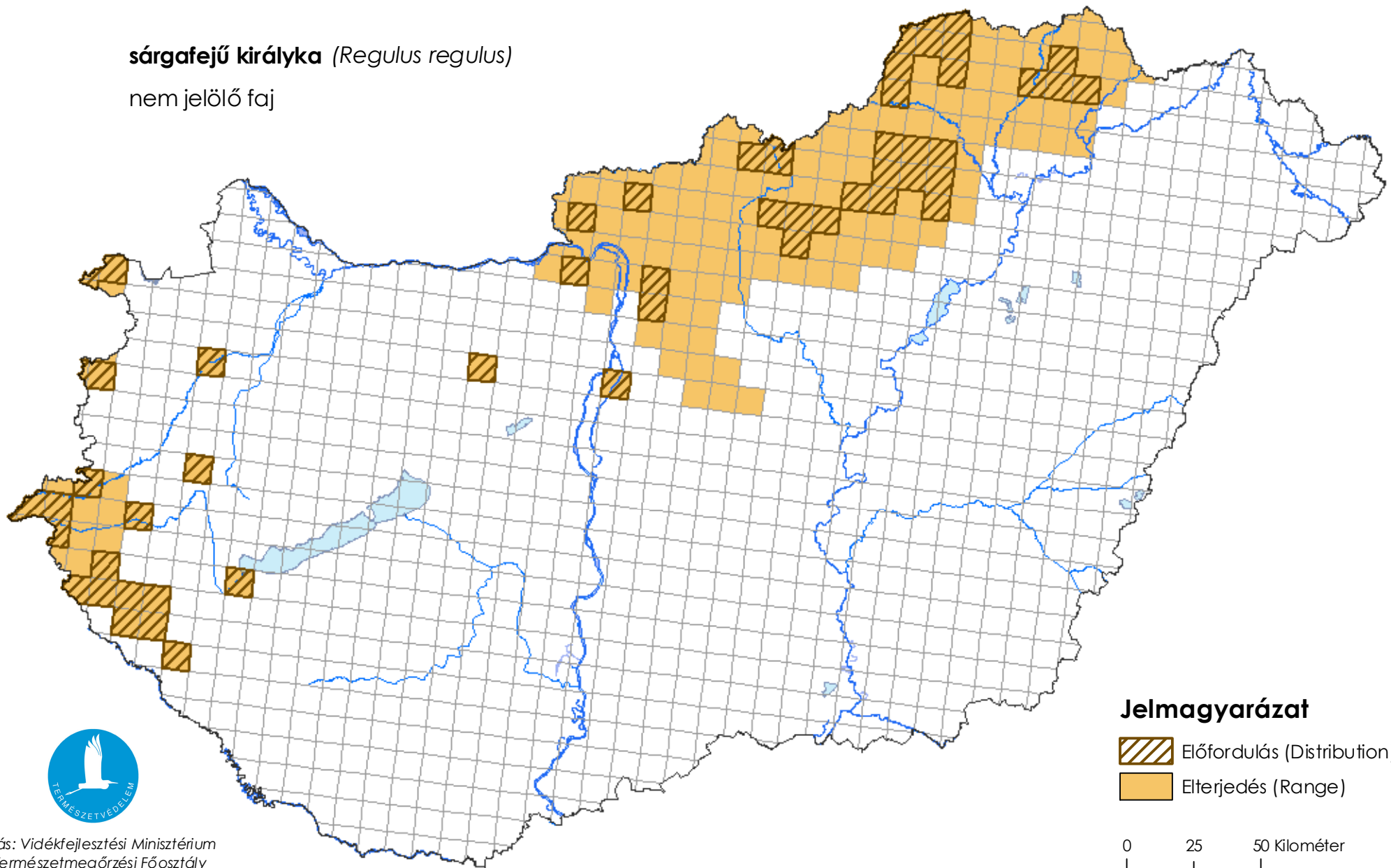
8.1.1 Population size	a)unit	N/A	b)minimum	c)maximum
8.1.2 Method used	N/A			
8.1.3 Short-term trend of population	N/A			

8.2 Conservation Measures

Térképmelléklet a madárvédelmi irányelv 12. cikke alapján készített országjelentéshez 2013.

sárgafejű királyka (*Regulus regulus*)

nem jelölő faj



Forrás: Vidékfejlesztési Minisztérium
Természetmegőrzési Főosztály