

Report on the main results of the surveillance under article 17 for annex I habitat types (Annex D)

CODE: 3260

NAME: Water courses of plain to montane levels with the Ranunculion fluitantis and Callitriche-Batrachion vegetation

1. National Level

1.1 Maps

1.1.1 Distribution Map	Yes
1.1.2 Distribution Method	Estimate based on partial data with some extrapolation and/or modelling (2)
1.1.3 Year or period	2007-2012
1.1.4 Additional map	No
1.1.5 Range Map	Yes

2. Biogeographical Or Marine Level

2.1 Biogeographical Region

Pannonian (PAN)

2.2 Published

Böloni J., Molnár Zs. & Kun A (2011): Magyarország Élőhelyei Vegetációtípusok leírása és határozója ÁNÉR 2011: MTA Ökológiai és Botanikai Kutatóintézete, Vácrátót.

A Nemzeti Biodiverzitás-monitorozó Rendszer keretében 2007-2012 között végzett felmérések kutatási jelentése

2.3 Range of the habitat type in the biogeographical region or marine region

2.3.1 Surface area - Range (km ²)	9198
2.3.2 Range method used	Estimate based on partial data with some extrapolation and/or modelling (2)
2.3.3 Short-term trend period	2001-2012
2.3.4 Short-term trend direction	stable (0)
2.3.5 Short-term trend magnitude	min max
2.3.6 Long-term trend period	
2.3.7 Long-term trend direction	N/A
2.3.8 Long-term trend magnitude	min max
2.3.9 Favourable reference range	area (km ²) operator approximately equal to (≈) unknown No method
2.3.10 Reason for change	Improved knowledge/more accurate data Use of different method

2.4 Area covered by Habitat

2.4.1 Surface area (km ²)	1
2.4.2 Year or period	2007-2012
2.4.3 Method used	Estimate based on partial data with some extrapolation and/or modelling (2)
2.4.4 Short-term trend period	2001-2012
2.4.5 Short-term trend direction	unknown (x)
2.4.6 Short-term trend magnitude	min max

Report on the main results of the surveillance under article 17 for annex I habitat types (Annex D)

2.4.7 Short term trend method used	Estimate based on partial data with some extrapolation and/or modelling (2)	
2.4.8 Long-term trend period		
2.4.9 Long-term trend direction	N/A	
2.4.10 Long-term trend magnitude	min	max
2.4.11 Long term trend method used	N/A	
2.4.12 Favourable reference area	area (km)	
	operator	N/A
	unknown	No
	method	
2.4.13 Reason for change	Improved knowledge/more accurate data Use of different method	

2.5 Main Pressures

Pressure	ranking	pollution qualifier(s)
Modification of hydrographic functioning, general (J02.05)	high importance (H)	N/A
Drying out (K01.03)	high importance (H)	N/A
Biocenotic evolution, succession (K02)	medium importance (M)	N/A
Pollution to surface waters (limnic & terrestrial, marine & brackish) (H01)	medium importance (M)	N/A

2.5.1 Method used – pressures mainly based on expert judgement and other data (2)

2.6 Main Threats

Threat	ranking	pollution qualifier(s)
Modification of hydrographic functioning, general (J02.05)	high importance (H)	N/A
Drying out (K01.03)	high importance (H)	N/A
Biocenotic evolution, succession (K02)	medium importance (M)	N/A
Pollution to surface waters (limnic & terrestrial, marine & brackish) (H01)	medium importance (M)	N/A

2.6.1 Method used – threats expert opinion (1)

2.7 Complementary Information

2.7.1 Species

Batrachium spp.
Callitriche cophocarpa
Zannichellia palustris
Potamogeton pectinatus
Potamogeton nodosus
Potamogeton berchtoldii
Ceratophyllum demersum
Potamogeton crispus
Elodea nutallii
Elodea canadensis

2.7.2 Species method used NBmR 5x5 km-es kvadrátok és N2000 területek élőhelytérképezése, az NBmR

Report on the main results of the surveillance under article 17 for annex I habitat types (Annex D)

monitorozásra kiválasztott társulásainak cönológiai felvételezése, valamint a közösségi jelentőségű élőhelytípusok monitorozása eredményeinek összegzése és értékelése alapján

2.7.3 Justification of % - thresholds for trends

2.7.4 Structure and functions - methods used

Estimate based on partial data with some extrapolation and/or modelling (2)

2.7.5 Other relevant information

A struktúra-funkció megítélése 5 komponensű (fajkészlet, fragmentáltság, inváziós fertőzöttség, termőhelyi sérülékenység, kezelések sikeressége) szempontrendszer alapján történt.

2.8 Conclusions (assessment of conservation status at end of reporting period)

2.8.1 Range

assessment Favourable (FV)
qualifiers N/A

2.8.2 Area

assessment Inadequate (U1)
qualifiers unknown (x)

2.8.3 Specific structures and functions (incl Species)

assessment Inadequate (U1)
qualifiers stable (=)

2.8.4 Future prospects

assessment Inadequate (U1)
qualifiers stable (=)

2.8.5 Overall assessment of Conservation Status

Inadequate (U1)

2.8.5 Overall trend in Conservation Status

stable (=)

3. Natura 2000 coverage conservation measures - Annex I habitat types on biogeographical level

3.1 Area covered by habitat

3.1.1 Surface area (km²)

min 0,4 max 0,5

3.1.2 Method used

Estimate based on partial data with some extrapolation and/or modelling (2)

3.1.3. Trend of surface area

N/A

3.2 Conversation Measures

3.2.1 Measure

3.2.2 Type

3.2.3 Ranking

3.2.4 Location

3.2.5 Broad Evaluation

Other wetland-related measures (4.0)

Administrative Recurrent

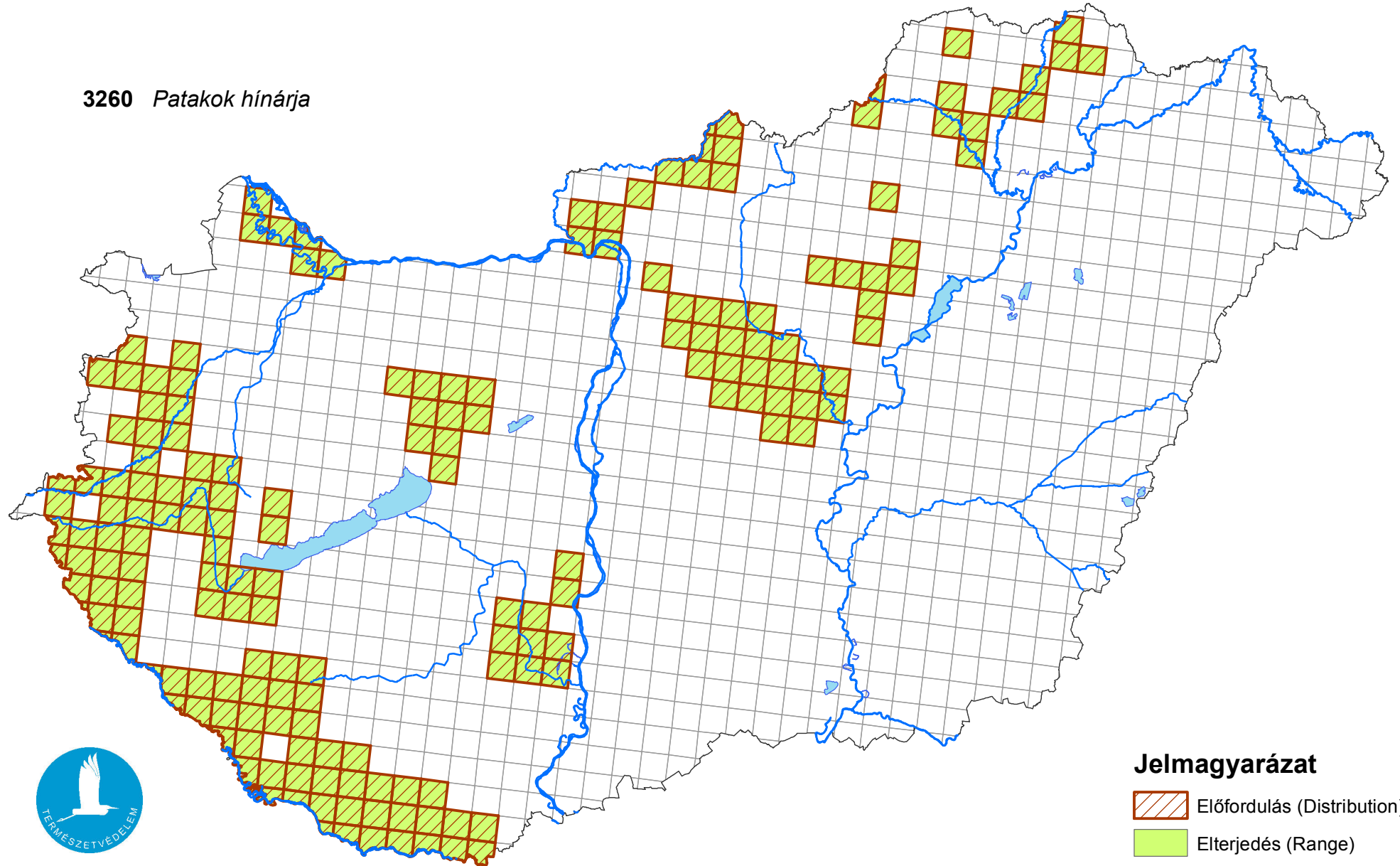
high importance (H)

Inside

Maintain Enhance



Térképmelléklet az élőhelyvédelmi irányelv 17. cikke alapján készített országjelentéshez 2013.

3260 *Patakok hínárja*



Forrás: Vidékfejlesztési Minisztérium
Természetmegőrzési Főosztály

Jelmagyarázat

-  Előfordulás (Distribution)
-  Elterjedés (Range)

0 25 50 Kilométer