

Report on the main results of the surveillance under Article 17 for Annex I habitat types (Annex D)

4.12 Additional information

5. Area covered by habitat

5.1 Year or period	2013-2018		
5.2 Surface area (in km ²)	a) Minimum 10	b) Maximum 13	c) Best single value
5.3 Type of estimate	Best estimate		
5.4 Surface area Method used	Based mainly on extrapolation from a limited amount of data		
5.5 Short-term trend Period	2007-2018		
5.6 Short-term trend Direction	Decreasing (-)		
5.7 Short-term trend Magnitude	a) Minimum	b) Maximum	c) Confidence interval
5.8 Short-term trend Method used	Based mainly on extrapolation from a limited amount of data		
5.9 Long-term trend Period			
5.10 Long-term trend Direction			
5.11 Long-term trend Magnitude	a) Minimum	b) Maximum	c) Confidence interval
5.12 Long-term trend Method used	Based mainly on extrapolation from a limited amount of data		
5.13 Favourable reference area	a) Area (km ²)	b) Operator	c) Unknown
		Approximately equal to (≈)	Yes
	d) Method		
5.14 Change and reason for change in surface area of range	Improved knowledge/more accurate data		
	The change is mainly due to:	Improved knowledge/more accurate data	
5.15 Additional information			

6. Structure and functions

6.1 Condition of habitat	a) Area in good condition (km ²)	Minimum 7,5	Maximum 10
	b) Area in not-good condition (km ²)	Minimum 2,5	Maximum 3
	c) Area where condition is not known (km ²)	Minimum 0	Maximum 0
6.2 Condition of habitat Method used	Based mainly on extrapolation from a limited amount of data		
6.3 Short-term trend of habitat area in good condition Period	20072018		
6.4 Short-term trend of habitat area in good condition Direction	Stable (0)		
6.5 Short-term trend of habitat area in good condition Method used	Based mainly on expert opinion with very limited data		
6.6 Typical species	Has the list of typical species changed in comparison to the previous reporting period?	No	
6.7 Typical species Method used			
6.8 Additional information			

7. Main pressures and threats

Report on the main results of the surveillance under Article 17 for Annex I habitat types (Annex D)

7.1 Characterisation of pressures/threats

Pressure	Ranking
Extraction of minerals (e.g. rock, metal ores, gravel, sand, shell) (C01)	H
Sports, tourism and leisure activities (F07)	H
Natural succession resulting in species composition change (other than by direct changes of agricultural or forestry practices) (L02)	M
Other invasive alien species (other than species of Union concern) (I02)	M
Management of fishing stocks and game (G08)	H

Threat	Ranking
Extraction of minerals (e.g. rock, metal ores, gravel, sand, shell) (C01)	H
Sports, tourism and leisure activities (F07)	H
Natural succession resulting in species composition change (other than by direct changes of agricultural or forestry practices) (L02)	M
Other invasive alien species (other than species of Union concern) (I02)	M
Management of fishing stocks and game (G08)	H

7.2 Sources of information

7.3 Additional information

8. Conservation measures

8.1 Status of measures	a) Are measures needed?	Yes
	b) Indicate the status of measures	Measures identified and taken
8.2 Main purpose of the measures taken	Restore the habitat of the species (related to 'Habitat for the species')	
8.3 Location of the measures taken	Both inside and outside Natura 2000	
8.4 Response to the measures	Medium-term results (within the next two reporting periods, 2019-2030)	
8.5 List of main conservation measures		

Management, control or eradication of other invasive alien species (CI03)

Reduce impact of outdoor sports, leisure and recreational activities (CF03)

Reducing the impact of (re-) stocking for fishing and hunting, of artificial feeding and predator control (CG03)

Adapt/manage extraction of non-energy resources (CC01)

Management of habitats (others than agriculture and forest) to slow, stop or reverse natural processes (CL01)

8.6 Additional information

9. Future prospects

Report on the main results of the surveillance under Article 17 for Annex I habitat types (Annex D)

9.1 Future prospects of parameters	a) Range	Good
	b) Area	Poor
	c) Structure and functions	Poor

9.2 Additional information

10. Conclusions

10.1. Range	Favourable (FV)
10.2. Area	Unfavourable - Inadequate (U1)
10.3. Specific structure and functions (incl. typical species)	Unfavourable - Inadequate (U1)
10.4. Future prospects	Unfavourable - Inadequate (U1)
10.5 Overall assessment of Conservation Status	Unfavourable - Inadequate (U1)
10.6 Overall trend in Conservation Status	Deteriorating (-)
10.7 Change and reasons for change in conservation status and conservation status trend	<p>a) Overall assessment of conservation status</p> <p>No change</p> <p>The change is mainly due to:</p> <p>b) Overall trend in conservation status</p> <p>Genuine</p> <p>Improved knowledge/more accurate data</p> <p>The change is mainly due to: Genuine change</p>
10.8 Additional information	

11. Natura 2000 (pSCIs, SCIs, SACs) coverage for Annex I habitat types

11.1 Surface area of the habitat type inside the pSCIs, SCIs and SACs network (in km ² in biogeographical/marine region)	<p>a) Minimum 9</p> <p>b) Maximum 11,5</p> <p>c) Best single value</p>
11.2 Type of estimate	Best estimate
11.3 Surface area of the habitat type inside the network Method used	Based mainly on extrapolation from a limited amount of data
11.4 Short-term trend of habitat area in good condition within the network Direction	Stable (0)
11.5 Short-term trend of habitat area in good condition within network Method used	Based mainly on expert opinion with very limited data
11.6 Additional information	

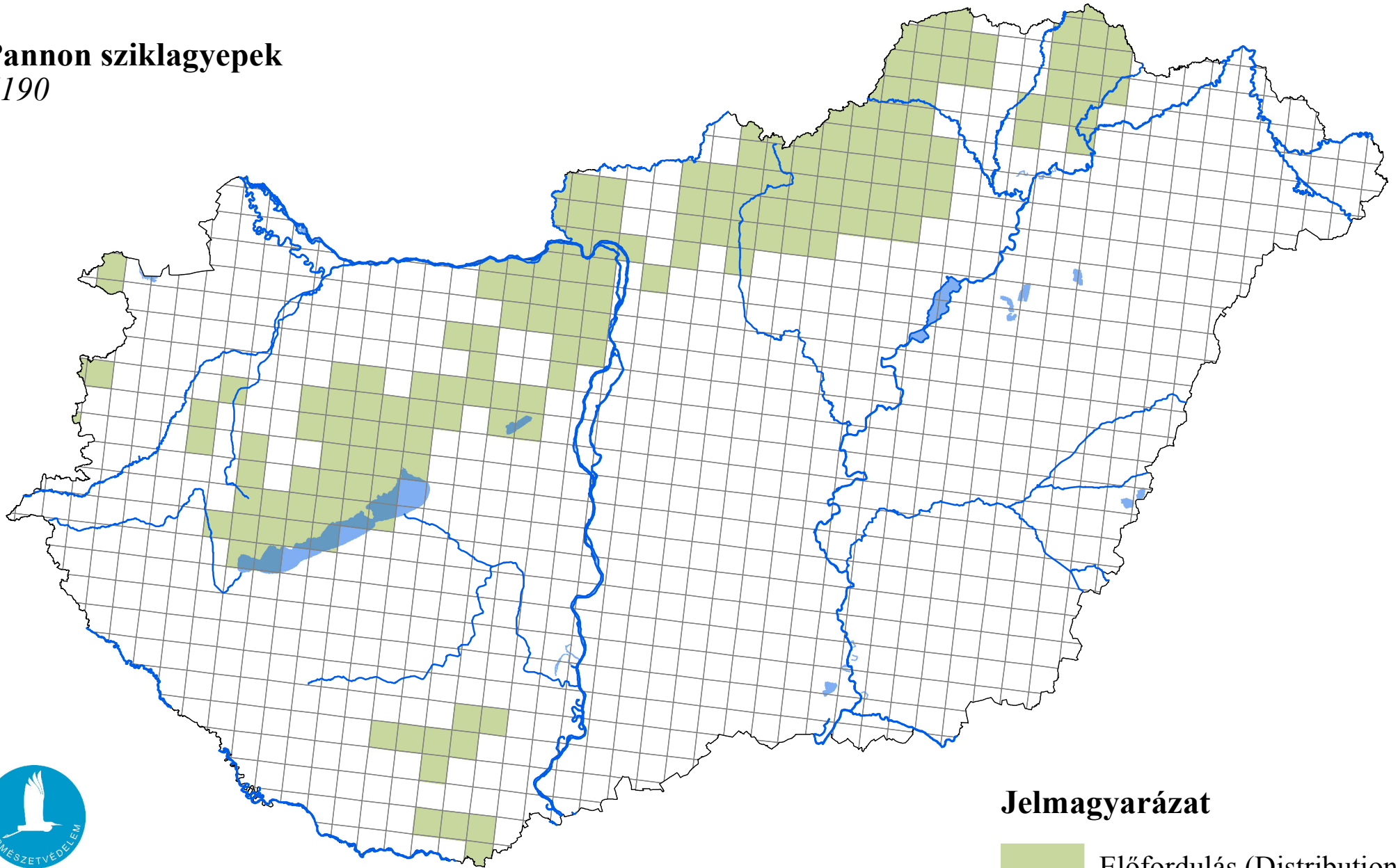
12. Complementary information

12.1 Justification of % thresholds for trends
12.2 Other relevant information

Report on the main results of the surveillance under Article 17 for Annex I habitat types (Annex D)

Az élőhelyvédelmi irányelv 17. cikke alapján készített országjelentés 2019

Pannon sziklagyepek 6190



Forrás: Agrárminisztérium,
Természetmegőrzési Főosztály

Jelmagyarázat

