

Report on the main results of the surveillance under Article 17 for Annex I habitat types (Annex D)

NATIONAL LEVEL

1. General information

1.1 Member State	HU
1.2 Habitat code	6430 - Hydrophilous tall herb fringe communities of plains and of the montan

2. Maps

2.1 Year or period	2013-2018
2.3 Distribution map	Yes
2.3 Distribution map Method used	Based mainly on extrapolation from a limited amount of data
2.4 Additional maps	No

BIOGEOGRAPHICAL LEVEL

3. Biogeographical and marine regions

3.1 Biogeographical or marine region where the habitat occurs	Pannonian (PAN)
3.2 Sources of information	Natura 2000 fenntartási tervek megalapozó adatai Haraszthy L. (szerk.) (2014): Natura 2000 fajok és élőhelyek Magyarországon. ProVértés Közalapítvány, Csákvár, 955 pp Bölöni J., Molnár Zs. & Kun A (2011): Magyarország Élőhelyei Vegetációtípusok leírása és határozója ÁNÉR 2011: MTA Ökológiai és Botanikai Kutatóintézete, Vácrátót.

4. Range

4.1 Surface area	30983
4.2 Short-term trend Period	2007-2018
4.3 Short-term trend Direction	Stable (0)
4.4 Short-term trend Magnitude	a) Minimum b) Maximum
4.5 Short-term trend Method used	Based mainly on expert opinion with very limited data
4.6 Long-term trend Period	
4.7 Long-term trend Direction	
4.8 Long-term trend Magnitude	a) Minimum b) Maximum
4.9 Long-term trend Method used	Based mainly on expert opinion with very limited data
4.10 Favourable reference range	a) Area (km ²) b) Operator Approximately equal to (≈) c) Unknown Yes d) Method
4.11 Change and reason for change in surface area of range	Improved knowledge/more accurate data The change is mainly due to: Improved knowledge/more accurate data
4.12 Additional information	

5. Area covered by habitat

5.1 Year or period	2013-2018
5.2 Surface area (in km ²)	a) Minimum 1 b) Maximum 10 c) Best single value

Report on the main results of the surveillance under Article 17 for Annex I habitat types (Annex D)

5.3 Type of estimate	Best estimate		
5.4 Surface area Method used	Based mainly on expert opinion with very limited data		
5.5 Short-term trend Period	2007-2018		
5.6 Short-term trend Direction	Decreasing (-)		
5.7 Short-term trend Magnitude	a) Minimum	b) Maximum	c) Confidence interval
5.8 Short-term trend Method used	Based mainly on expert opinion with very limited data		
5.9 Long-term trend Period			
5.10 Long-term trend Direction			
5.11 Long-term trend Magnitude	a) Minimum	b) Maximum	c) Confidence interval
5.12 Long-term trend Method used			
5.13 Favourable reference area	a) Area (km ²)	b) Operator	More than (>)
	c) Unknown	Yes	
	d) Method		
5.14 Change and reason for change in surface area of range	Improved knowledge/more accurate data		
	The change is mainly due to:	Improved knowledge/more accurate data	
5.15 Additional information			

6. Structure and functions

6.1 Condition of habitat	a) Area in good condition (km ²)	Minimum 0,3	Maximum 3
	b) Area in not-good condition (km ²)	Minimum 0,3	Maximum 3
	c) Area where condition is not known (km ²)	Minimum 0,4	Maximum 4
6.2 Condition of habitat Method used	Based mainly on expert opinion with very limited data		
6.3 Short-term trend of habitat area in good condition Period	20072018		
6.4 Short-term trend of habitat area in good condition Direction	Decreasing (-)		
6.5 Short-term trend of habitat area in good condition Method used	Based mainly on expert opinion with very limited data		
6.6 Typical species	Has the list of typical species changed in comparison to the previous reporting period?		No
6.7 Typical species Method used			
6.8 Additional information			

7. Main pressures and threats

7.1 Characterisation of pressures/threats

Pressure	Ranking
Intensive grazing or overgrazing by livestock (A09)	M
Natural succession resulting in species composition change (other than by direct changes of agricultural or forestry practices) (L02)	H

Report on the main results of the surveillance under Article 17 for Annex I habitat types (Annex D)

Management of fishing stocks and game (G08)	M
Invasive alien species of Union concern (I01)	H
Droughts and decreases in precipitation due to climate change (N02)	M
Other invasive alien species (other than species of Union concern) (I02)	H
Threat	Ranking
Intensive grazing or overgrazing by livestock (A09)	M
Natural succession resulting in species composition change (other than by direct changes of agricultural or forestry practices) (L02)	H
Management of fishing stocks and game (G08)	M
Invasive alien species of Union concern (I01)	H
Droughts and decreases in precipitation due to climate change (N02)	M
Other invasive alien species (other than species of Union concern) (I02)	H

7.2 Sources of information

7.3 Additional information

IAS union concern : *Impatiens glandulifera* Royle;

8. Conservation measures

8.1 Status of measures

a) Are measures needed?

Yes

b) Indicate the status of measures

Measures identified, but none yet taken

8.2 Main purpose of the measures taken

8.3 Location of the measures taken

8.4 Response to the measures

Medium-term results (within the next two reporting periods, 2019-2030)

8.5 List of main conservation measures

Prevent conversion of natural and semi-natural habitats, and habitats of species into agricultural land (CA01)

Manage drainage and irrigation operations and infrastructures in agriculture (CA15)

Management, control or eradication of other invasive alien species (CI03)

Stop mowing, grazing and other equivalent agricultural activities (CA06)

Management of habitats (others than agriculture and forest) to slow, stop or reverse natural processes (CL01)

8.6 Additional information

9. Future prospects

9.1 Future prospects of parameters

a) Range

Good

b) Area

Poor

c) Structure and functions

Bad

9.2 Additional information

Report on the main results of the surveillance under Article 17 for Annex I habitat types (Annex D)

10. Conclusions

10.1. Range	Favourable (FV)
10.2. Area	Unfavourable - Inadequate (U1)
10.3. Specific structure and functions (incl. typical species)	Unfavourable - Bad (U2)
10.4. Future prospects	Unfavourable - Bad (U2)
10.5 Overall assessment of Conservation Status	Unfavourable - Bad (U2)
10.6 Overall trend in Conservation Status	Deteriorating (-)
10.7 Change and reasons for change in conservation status and conservation status trend	a) Overall assessment of conservation status No change The change is mainly due to: b) Overall trend in conservation status Genuine Improved knowledge/more accurate data The change is mainly due to: Improved knowledge/more accurate data
10.8 Additional information	

11. Natura 2000 (pSCIs, SCIs, SACs) coverage for Annex I habitat types

11.1 Surface area of the habitat type inside the pSCIs, SCIs and SACs network (in km ² in biogeographical/marine region)	a) Minimum 0,8 b) Maximum 8 c) Best single value
11.2 Type of estimate	Best estimate
11.3 Surface area of the habitat type inside the network Method used	Based mainly on expert opinion with very limited data
11.4 Short-term trend of habitat area in good condition within the network Direction	Decreasing (-)
11.5 Short-term trend of habitat area in good condition within network Method used	Based mainly on expert opinion with very limited data
11.6 Additional information	

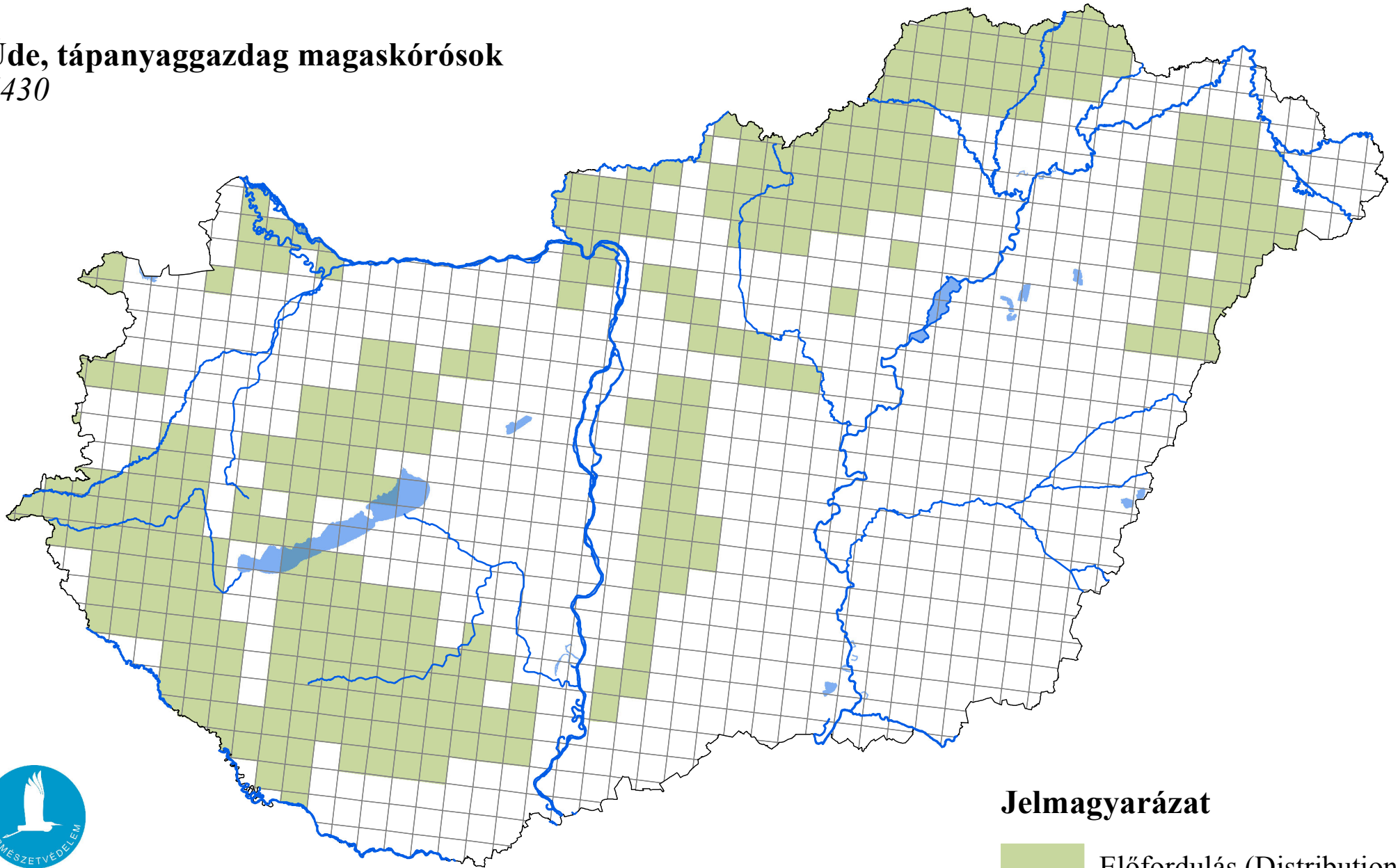
12. Complementary information

12.1 Justification of % thresholds for trends
12.2 Other relevant information

Report on the main results of the surveillance under Article 17 for Annex I habitat types (Annex D)


Az élőhelyvédelmi irányelv 17. cikke alapján készített országjelentés 2019

Üde, tápanyaggazdag magaskórósok
6430



Forrás: Agrárminisztérium,
Természetmegőrzési Főosztály

Jelmagyarázat

 Előfordulás (Distribution)

0 25 50 Kilometers
