

Report on the main results of the surveillance under Article 17 for Annex I habitat types (Annex D)

5.6 Short-term trend Direction	Stable (0)		
5.7 Short-term trend Magnitude	a) Minimum	b) Maximum	c) Confidence interval
5.8 Short-term trend Method used	Based mainly on extrapolation from a limited amount of data		
5.9 Long-term trend Period			
5.10 Long-term trend Direction			
5.11 Long-term trend Magnitude	a) Minimum	b) Maximum	c) Confidence interval
5.12 Long-term trend Method used			
5.13 Favourable reference area	a) Area (km ²)	Approximately equal to (≈)	
	b) Operator	Yes	
	c) Unknown	Yes	
	d) Method		
5.14 Change and reason for change in surface area of range	Improved knowledge/more accurate data Use of different method		
	The change is mainly due to:	Improved knowledge/more accurate data	
5.15 Additional information			

6. Structure and functions

6.1 Condition of habitat	a) Area in good condition (km ²)	Minimum 0,2	Maximum 0,5
	b) Area in not-good condition (km ²)	Minimum 0	Maximum 0
	c) Area where condition is not known (km ²)	Minimum 0	Maximum 0
6.2 Condition of habitat Method used	Complete survey or a statistically robust estimate		
6.3 Short-term trend of habitat area in good condition Period	20072018		
6.4 Short-term trend of habitat area in good condition Direction	Stable (0)		
6.5 Short-term trend of habitat area in good condition Method used	Based mainly on extrapolation from a limited amount of data		
6.6 Typical species	Has the list of typical species changed in comparison to the previous reporting period? Yes		
6.7 Typical species Method used	Asplenium ruta-muraria, Asplenium trichomanes, Chelidonium majus, Cystopteris fragilis, Hylotelephium telephium subsp. maximum, Mycelis muralis, Polypodium vulgare, Moehringia trinervia, Sedum album, Seseli osseum, Cardaminopsis arenosa, Melica ciliata, Allium flavum, Jovibarba globifera subsp. Hirta		
6.8 Additional information			

7. Main pressures and threats

7.1 Characterisation of pressures/threats

Pressure	Ranking
Sports, tourism and leisure activities (F07)	M
Management of fishing stocks and game (G08)	M

Report on the main results of the surveillance under Article 17 for Annex I habitat types (Annex D)

Interspecific relations (competition, predation, parasitism, pathogens) (L06) M

Threat Ranking

Sports, tourism and leisure activities (F07) M

Management of fishing stocks and game (G08) M

Interspecific relations (competition, predation, parasitism, pathogens) (L06) M

7.2 Sources of information

7.3 Additional information

8. Conservation measures

8.1 Status of measures a) Are measures needed? No

b) Indicate the status of measures

8.2 Main purpose of the measures taken

8.3 Location of the measures taken

8.4 Response to the measures

8.5 List of main conservation measures

8.6 Additional information

9. Future prospects

9.1 Future prospects of parameters a) Range Good
b) Area Good
c) Structure and functions Good

9.2 Additional information

10. Conclusions

10.1. Range Favourable (FV)

10.2. Area Favourable (FV)

10.3. Specific structure and functions (incl. typical species) Favourable (FV)

10.4. Future prospects Favourable (FV)

10.5 Overall assessment of Conservation Status Favourable (FV)

10.6 Overall trend in Conservation Status Stable (=)

10.7 Change and reasons for change in conservation status and conservation status trend a) Overall assessment of conservation status

No change

The change is mainly due to:

b) Overall trend in conservation status

Report on the main results of the surveillance under Article 17 for Annex I habitat types (Annex D)

Use of different method

The change is mainly due to:

10.8 Additional information

11. Natura 2000 (pSCIs, SCIs, SACs) coverage for Annex I habitat types

11.1 Surface area of the habitat type inside the pSCIs, SCIs and SACs network (in km² in biogeographical/marine region)

- a) Minimum 0,15
- b) Maximum 0,4
- c) Best single value

11.2 Type of estimate

Best estimate

11.3 Surface area of the habitat type inside the network Method used

Complete survey or a statistically robust estimate

11.4 Short-term trend of habitat area in good condition within the network Direction

Stable (0)

11.5 Short-term trend of habitat area in good condition within network Method used

Based mainly on extrapolation from a limited amount of data

11.6 Additional information

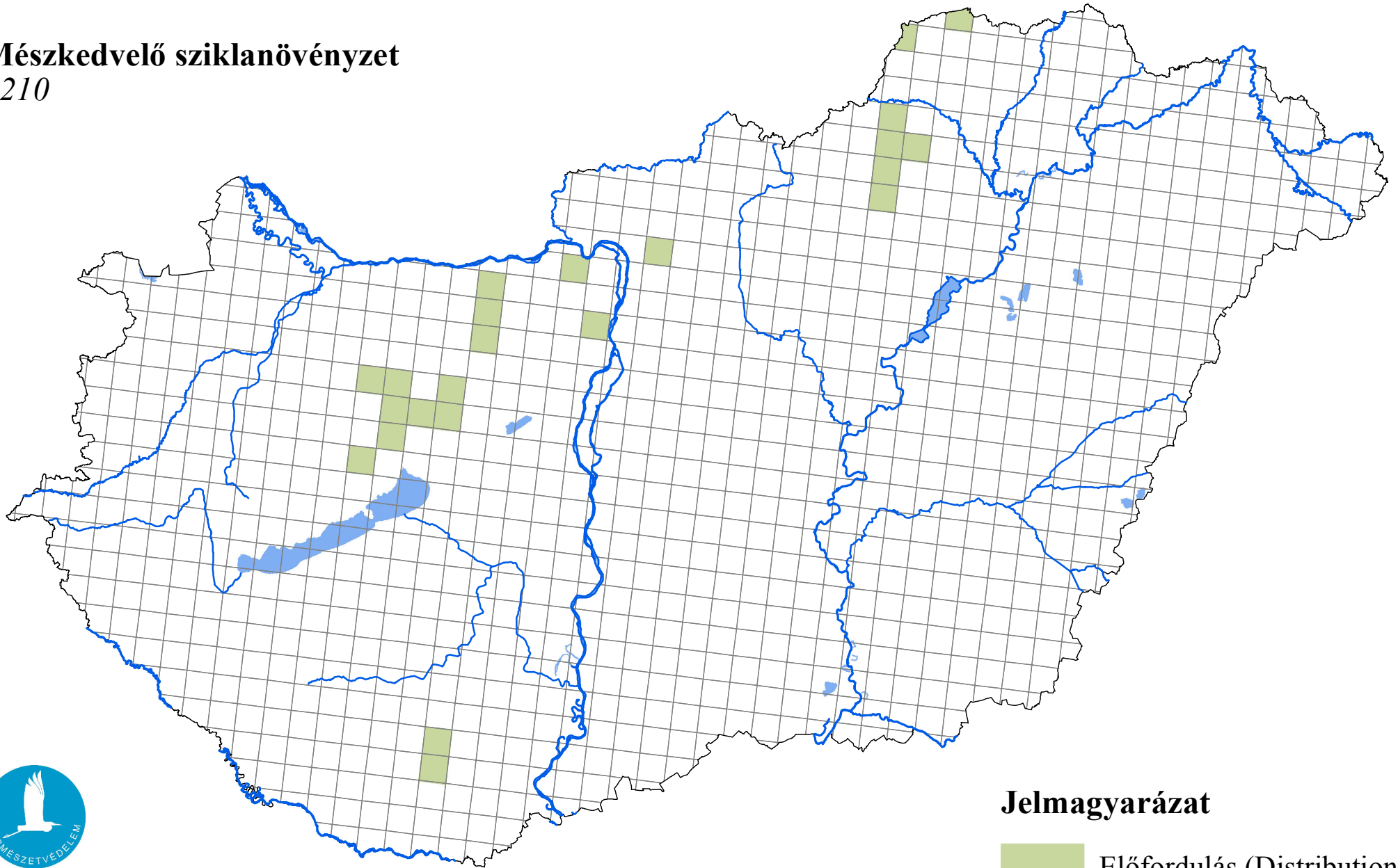
12. Complementary information

12.1 Justification of % thresholds for trends

12.2 Other relevant information

Az élőhelyvédelmi irányelv 17. cikke alapján készített országjelentés 2019

Mészkedvelő sziklanövényzet
8210



Forrás: Agrárminisztérium,
Természetmegőrzési Főosztály

Jelmagyarázat

