

Report on the main results of the surveillance under Article 17 for Annex I habitat types (Annex D)

5.6 Short-term trend Direction	Stable (0)		
5.7 Short-term trend Magnitude	a) Minimum	b) Maximum	c) Confidence interval
5.8 Short-term trend Method used	Based mainly on expert opinion with very limited data		
5.9 Long-term trend Period			
5.10 Long-term trend Direction			
5.11 Long-term trend Magnitude	a) Minimum	b) Maximum	c) Confidence interval
5.12 Long-term trend Method used			
5.13 Favourable reference area	a) Area (km ²)	Approximately equal to (≈)	
	b) Operator	Yes	
	c) Unknown	Yes	
	d) Method		
5.14 Change and reason for change in surface area of range	Improved knowledge/more accurate data		
	The change is mainly due to:	Improved knowledge/more accurate data	
5.15 Additional information			

6. Structure and functions

6.1 Condition of habitat	a) Area in good condition (km ²)	Minimum 12	Maximum 13
	b) Area in not-good condition (km ²)	Minimum 4	Maximum 6
	c) Area where condition is not known (km ²)	Minimum 2	Maximum 2
6.2 Condition of habitat Method used	Based mainly on extrapolation from a limited amount of data		
6.3 Short-term trend of habitat area in good condition Period	20072018		
6.4 Short-term trend of habitat area in good condition Direction	Stable (0)		
6.5 Short-term trend of habitat area in good condition Method used	Based mainly on expert opinion with very limited data		
6.6 Typical species	Has the list of typical species changed in comparison to the previous reporting period?		No
6.7 Typical species Method used			
6.8 Additional information			

7. Main pressures and threats

7.1 Characterisation of pressures/threats

Pressure	Ranking
Management of fishing stocks and game (G08)	H
Logging (excluding clear cutting) of individual trees (B06)	M
Removal of dead and dying trees, including debris (B07)	M
Other invasive alien species (other than species of Union concern) (I02)	M
Temperature changes (e.g. rise of temperature & extremes) due to climate change (N01)	M

Report on the main results of the surveillance under Article 17 for Annex I habitat types (Annex D)

Droughts and decreases in precipitation due to climate change (N02) M

Threat Ranking

Management of fishing stocks and game (G08) H

Logging (excluding clear cutting) of individual trees (B06) M

Removal of dead and dying trees, including debris (B07) M

Other invasive alien species (other than species of Union concern) (I02) M

Temperature changes (e.g. rise of temperature & extremes) due to climate change (N01) M

Droughts and decreases in precipitation due to climate change (N02) H

7.2 Sources of information

7.3 Additional information

8. Conservation measures

8.1 Status of measures a) Are measures needed? Yes

b) Indicate the status of measures Measures identified and taken

8.2 Main purpose of the measures taken Maintain the current range, population and/or habitat for the species

8.3 Location of the measures taken Both inside and outside Natura 2000

8.4 Response to the measures Medium-term results (within the next two reporting periods, 2019-2030)

8.5 List of main conservation measures

Adapt/change forest management and exploitation practices (CB05)

Stop forest management and exploitation practices (CB06)

Combat illegal logging (CB07)

Management, control or eradication of other invasive alien species (CI03)

Management of problematic native species (CI05)

8.6 Additional information

9. Future prospects

9.1 Future prospects of parameters a) Range Good

b) Area Good

c) Structure and functions Poor

9.2 Additional information

10. Conclusions

10.1. Range Favourable (FV)

10.2. Area Favourable (FV)

Report on the main results of the surveillance under Article 17 for Annex I habitat types (Annex D)

10.3. Specific structure and functions (incl. typical species)	Unfavourable - Inadequate (U1)
10.4. Future prospects	Unfavourable - Inadequate (U1)
10.5 Overall assessment of Conservation Status	Unfavourable - Inadequate (U1)
10.6 Overall trend in Conservation Status	Stable (=)
10.7 Change and reasons for change in conservation status and conservation status trend	<p>a) Overall assessment of conservation status</p> <p>Improved knowledge/more accurate data Use of different method</p> <p>The change is mainly due to: Improved knowledge/more accurate data</p> <p>b) Overall trend in conservation status</p> <p>No change</p> <p>The change is mainly due to:</p>
10.8 Additional information	

11. Natura 2000 (pSCIs, SCIs, SACs) coverage for Annex I habitat types

11.1 Surface area of the habitat type inside the pSCIs, SCIs and SACs network (in km ² in biogeographical/marine region)	<p>a) Minimum 17</p> <p>b) Maximum 19</p> <p>c) Best single value</p>
11.2 Type of estimate	Best estimate
11.3 Surface area of the habitat type inside the network Method used	Based mainly on extrapolation from a limited amount of data
11.4 Short-term trend of habitat area in good condition within the network Direction	Stable (0)
11.5 Short-term trend of habitat area in good condition within network Method used	Based mainly on expert opinion with very limited data
11.6 Additional information	

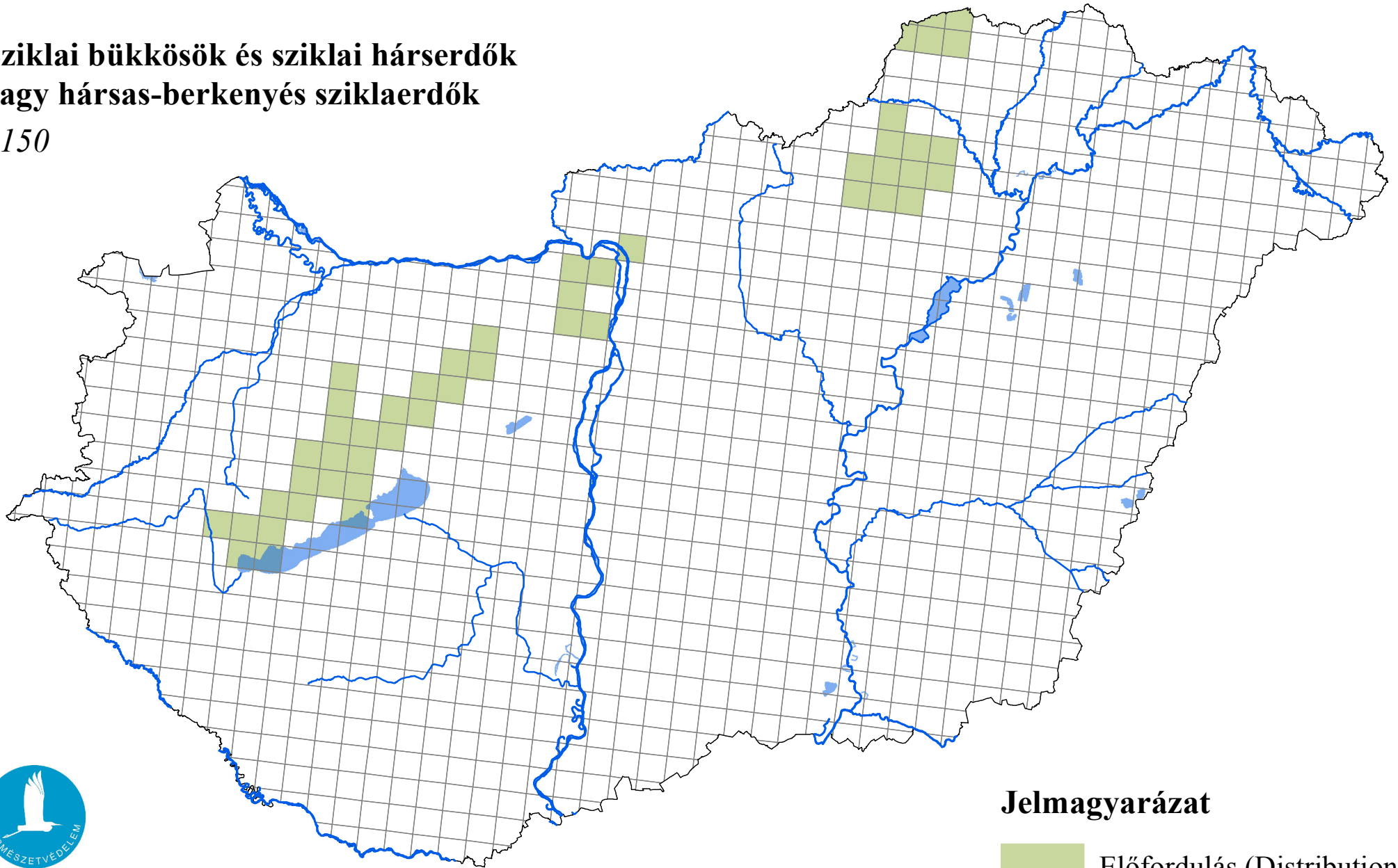
12. Complementary information

12.1 Justification of % thresholds for trends
12.2 Other relevant information

Az élőhelyvédelmi irányelv 17. cikke alapján készített országjelentés 2019


Sziklai bükkösök és sziklai hárserdők
vagy hársas-berkenyés sziklaerdők

9150



Forrás: Agrárminisztérium,
Természetmegőrzési Főosztály

Jelmagyarázat

 Előfordulás (Distribution)

0 25 50 Kilometers