

# Large Carnivores in the Czech Republic

Karel Chobot, Lenka Jandová  
AOPK ČR



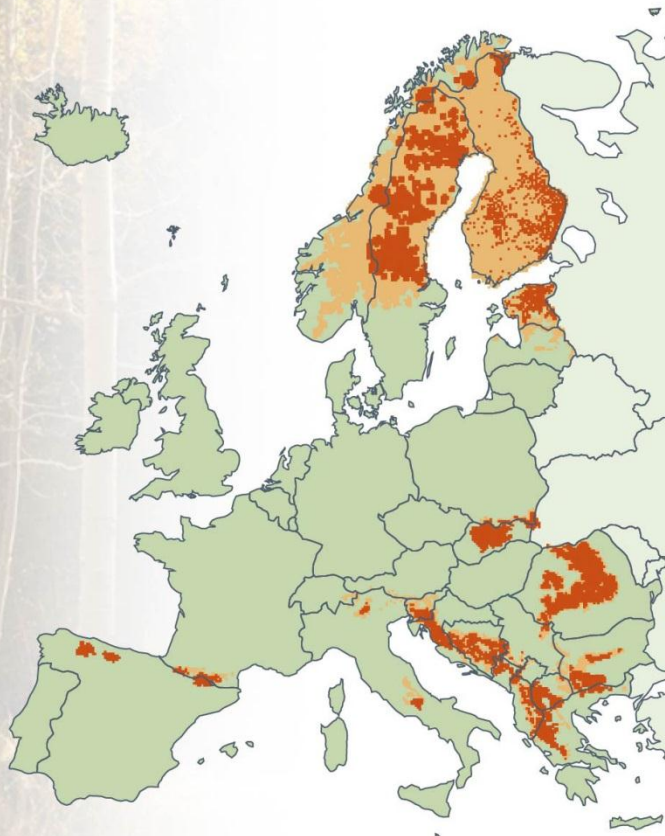


## Occurrence and population

- In the past occurred in the entire territory of the Czech Republic
- Hunted to extinction at the turn of 19<sup>th</sup> and 20<sup>th</sup> century
- Wolf and bear: Beskydy Mts. (borders with Slovakia)
- Lynx: Beskydy Mts., Šumava Mts. (reintroduction), Jeseníky

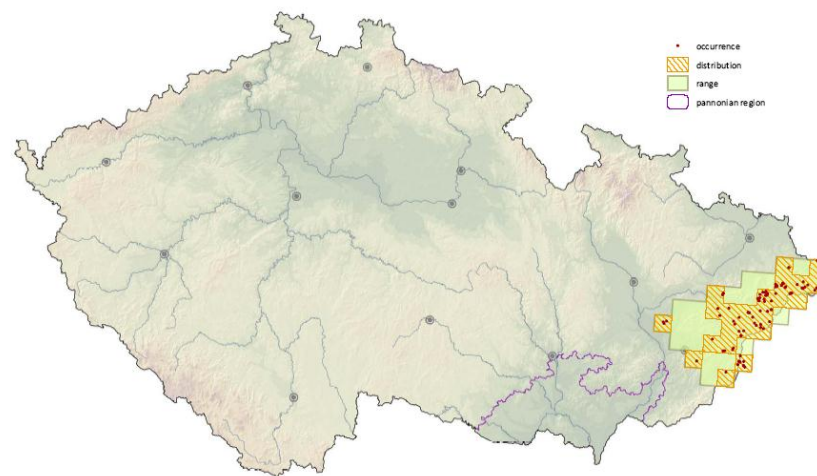
## Status and related legislation

- Specially protected species (critically endangered, strongly endangered)
- Czech Red list
- Hunting forbidden
- Compensation of damage



Carpathian population  
7200 (CZ: ±1)

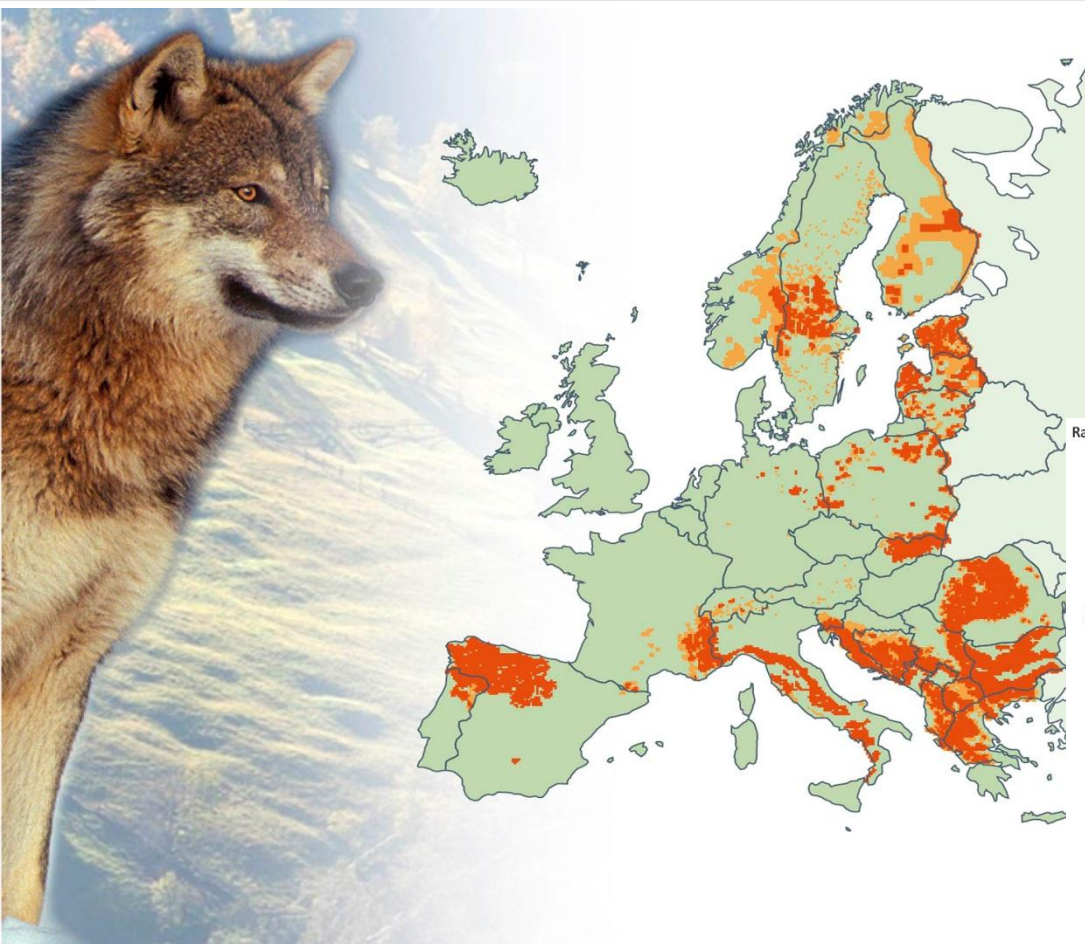
Range, distribution and occurrence of 1354 - *Ursus arctos*



© ADP/ CA 2013, C02X 2012

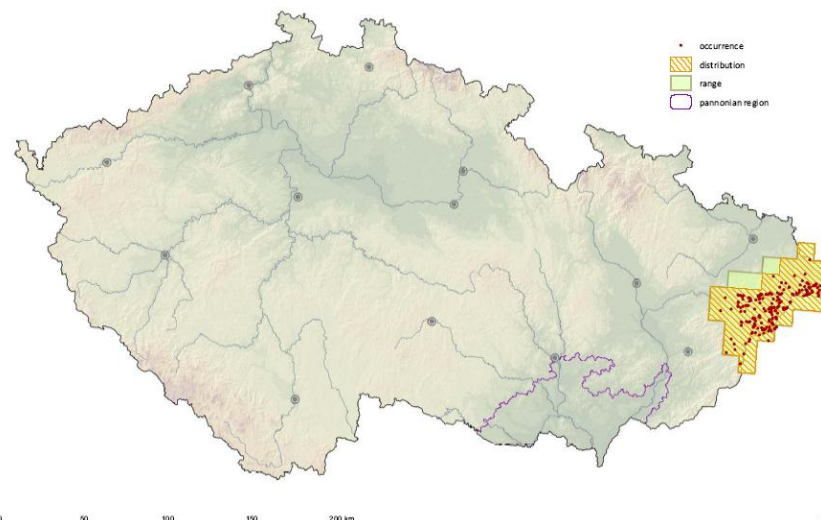


MS	Range (km <sup>2</sup> )				Population				Habitat for the species (km <sup>2</sup> )					Future prosp.	Overall assessment					Areas from gridded maps(km <sup>2</sup> )			
	Area	% MS	Trend	Ref.	Size&Unit	% MS	Trend	Ref.	Area	% MS	Qual.	Trend	Suitable		Curr. CS	Qualifier	Prev. CS	Nat. of ch.	Range	% MS	Distrib.	% MS	
CZ	3900	N/A	0	>>3900	3 - 5 indiv.	N/A	-	>>3	3900	N/A	m	0	N/A		U2	=	U2	nc	3900	N/A	2000	N/A	



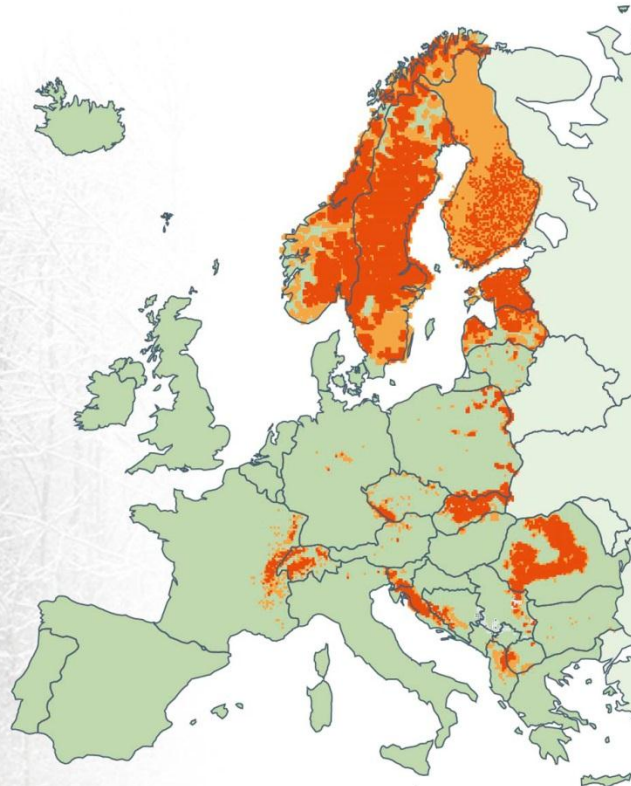
Carpathian population 3000  
(CZ: 3-5)  
Centr European population  
36 packs↑ (CZ: 1 – iv'14)

Range, distribution and occurrence of 1352 - *Canis lupus*



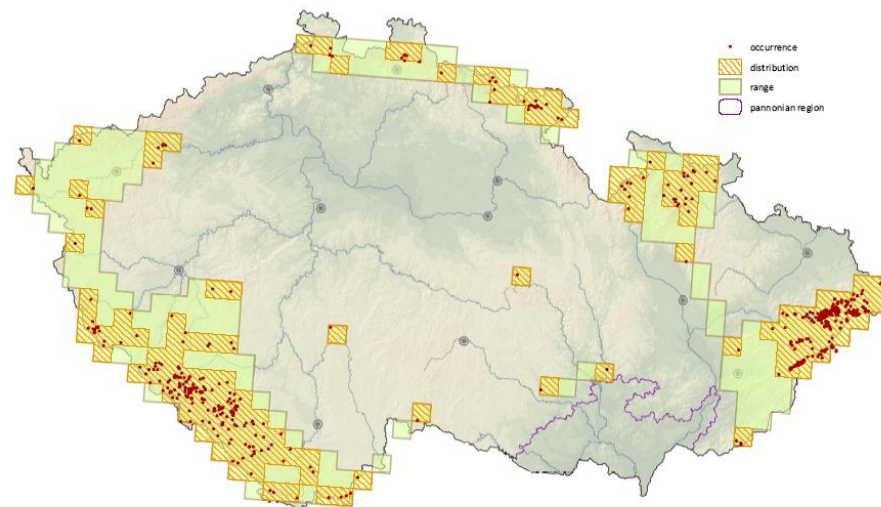
© ADP/C. 08. 2013, ©2014. 2012

MS	Range (km <sup>2</sup> )				Population				Habitat for the species (km <sup>2</sup> )					Future prosp.	Overall assessment				Areas from gridded maps(km <sup>2</sup> )			
	Area	% MS	Trend	Ref.	Size&Unit	% MS	Trend	Ref.	Area	% MS	Qual.	Trend	Suitable		Curr. CS	Qualifier	Prev. CS	Nat. of ch.	Range	% MS	Distrib.	% MS
CZ	2900	N/A	-	>>2900	- 10 indiv.	N/A	-	>>0	2900	N/A	m	0	N/A	U2	=	U2	nc	2900	N/A	2300	N/A	



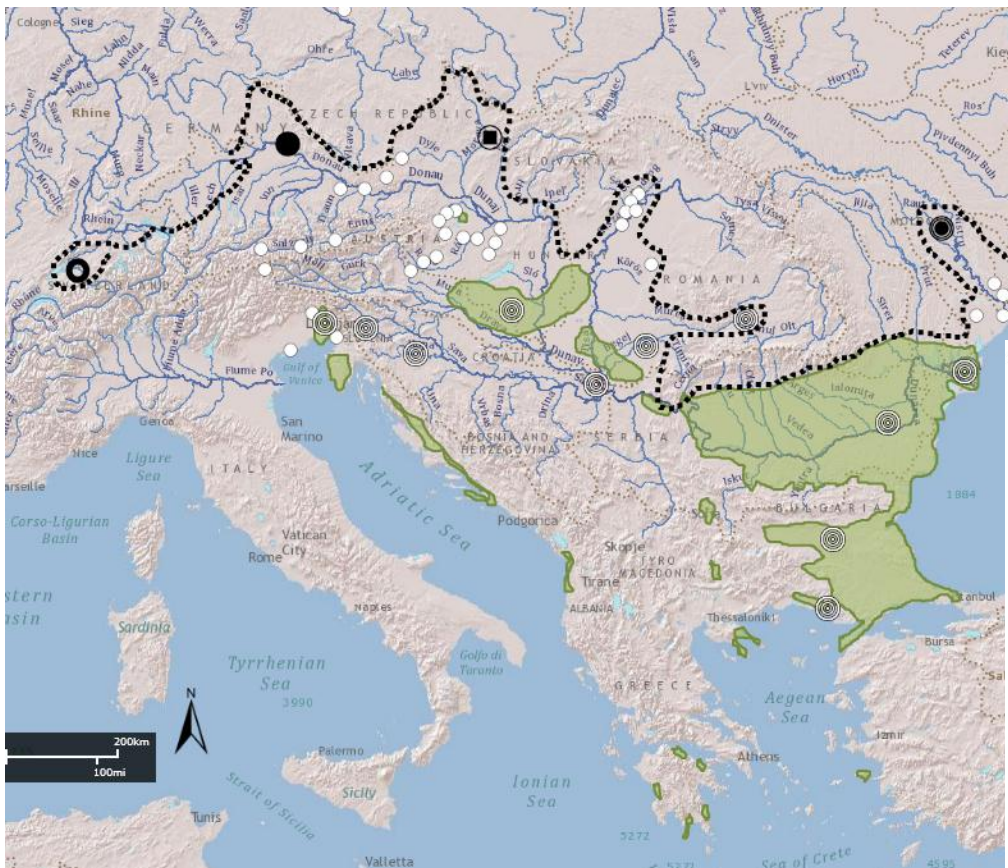
Carpathian population 2400  
(CZ: 10)  
Bohemian-bavarian population  
50 (CZ: 65-100!)

Range, distribution and occurrence of 1361 - *Lynx lynx*



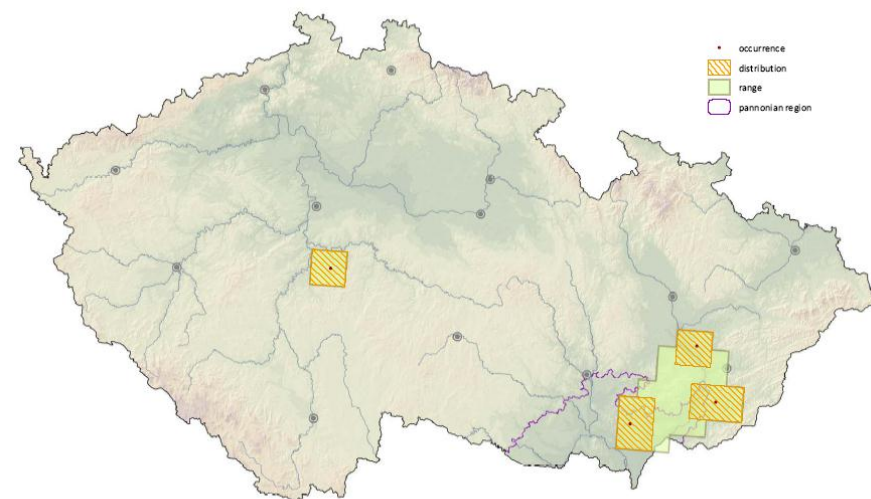
© AOPH ČR 2013, ČLÚK 2012

MS	Range (km <sup>2</sup> )				Population				Habitat for the species (km <sup>2</sup> )					Future prosp.	Overall assessment				Areas from gridded maps (km <sup>2</sup> )			
	Area	% MS	Trend	Ref.	Size&Unit	% MS	Trend	Ref.	Area	% MS	Qual.	Trend	Suitable		Curr. CS	Qualifier	Prev. CS	Nat. of ch.	Range	% MS	Distrib.	% MS
CZ	23100	15.9	0	>23100	65 - 150 indiv.	10	-	>65	23100	22.9	m	0	N/A		U1	=	U1	nc	22100	16.70	10900	11.40



EU: 40 000 indiv  
new species to CZ: 2006

Range, distribution and occurrence of 1353 - *Canis aureus*



© AOPK ČR, 2013; Cizák 2012



MS	Reg	Range (km <sup>2</sup> )				Population				Habitat for the species (km <sup>2</sup> )					Future prosp.	Overall assessment				Areas from gridded maps(km <sup>2</sup> )			
		Area	% MS	Trend	Ref.	Size&Unit	% MS	Trend	Ref.	Area	% MS	Qual.	Trend	Suitable		Curr. CS	Qualifier	Prev. CS	Nat. of ch.	Range	% MS	Distrib.	% MS
CZ	CON	3100	N/A	+	x	1 - 3 indiv.	N/A	+	x	N/A	N/A	x	x	N/A		XX	N/A		2600	N/A	1400	N/A	
CZ	PAN	1700	N/A	+	x	- 1 indiv.	N/A	+	x	N/A	N/A	x	x	N/A		XX	N/A		900	N/A	600	N/A	

# Conservation Measures



- Legislation (regulation of hunting and compensation of damage)
- Educational campaign and public awareness
- Improvement of cooperation between Police and nature conservation authorities
- International cross-border cooperation (esp. with Slovakia)
- Regular monitoring and research
- Migratory corridors
- Action plan for endangered species
- Changes in forest vegetation (spruce monocultures vs. natural and semi-natural forests)