

Financing the Natura 2000 network In the Northern Lowland Region *- practical experiences -*



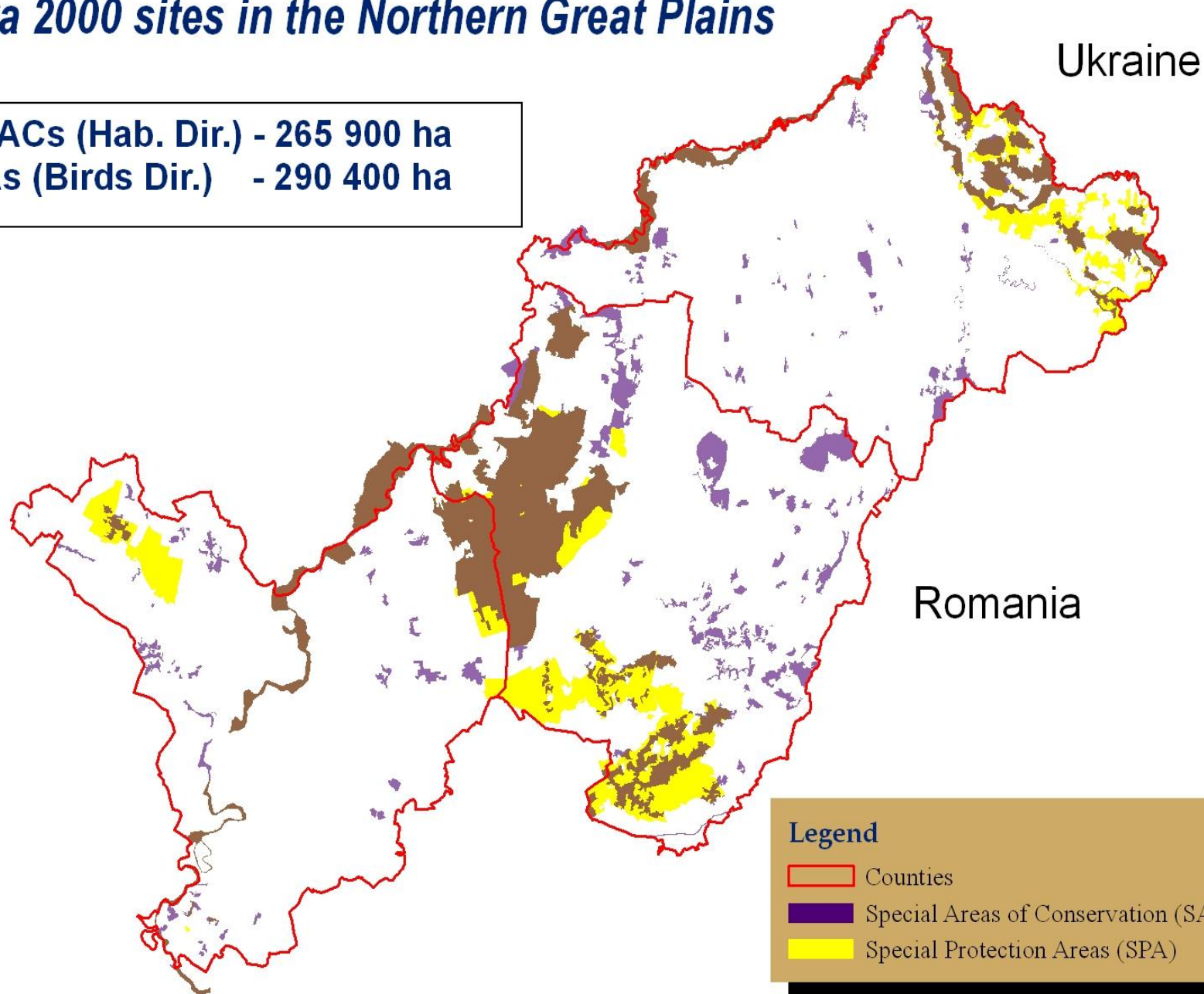
Gábor Szilágyi, director
gabor@hnp.hu

Hortobágy National Park Directorate
www.hnp.hu



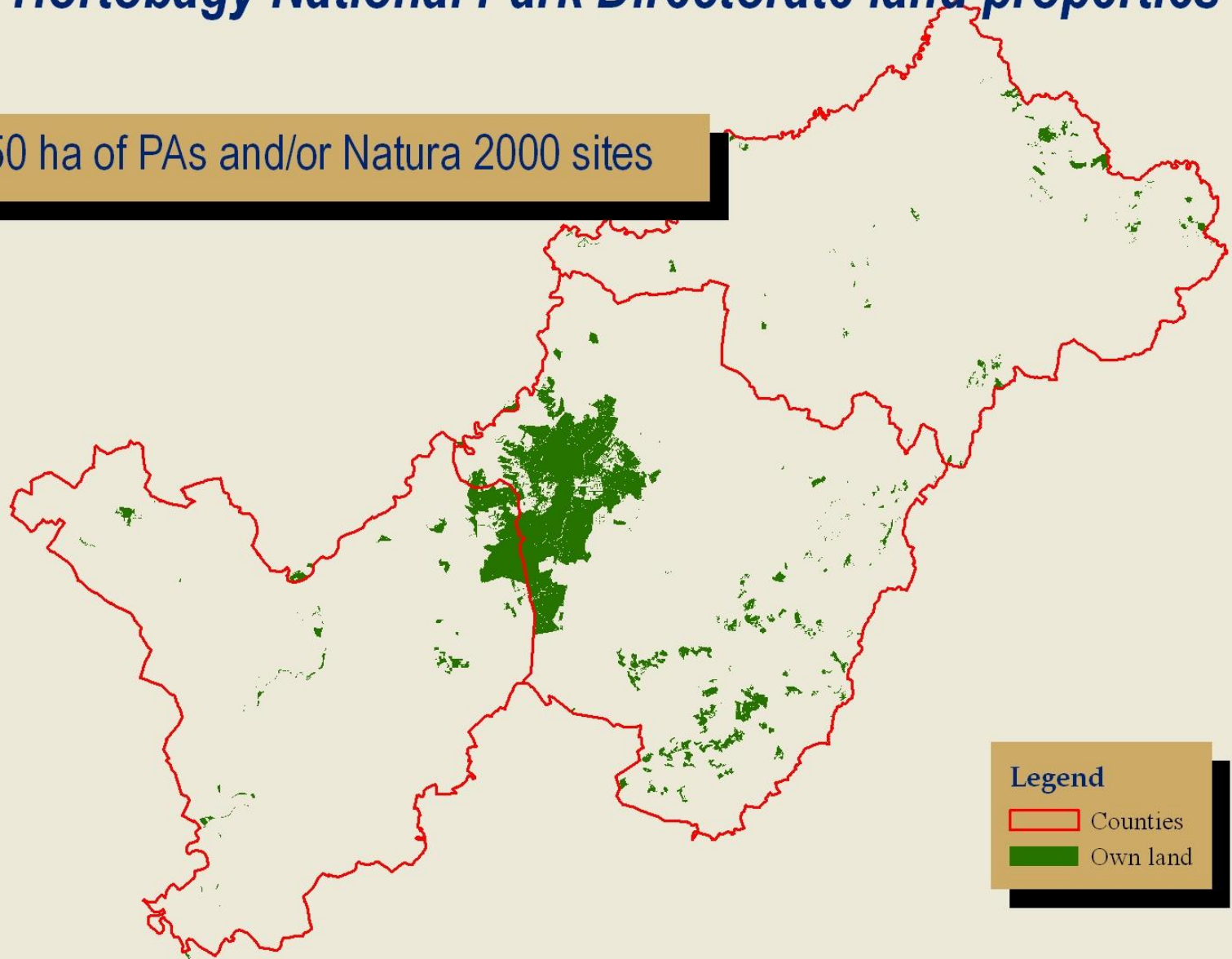
Natura 2000 sites in the Northern Great Plains

120 SACs (Hab. Dir.) - 265 900 ha
6 SPAs (Birds Dir.) - 290 400 ha



Hortobágy National Park Directorate land properties

99 350 ha of PAs and/or Natura 2000 sites



Implemented LIFE projects

2002-2007

| No . | Title | Total budget |
|-----------------|---|---------------------|
| 1. | Landscape-scale habitat rehabilitation in the Hortobágy National Park | 780 750 € |
| 2. | Complex rehabilitation of the Central Bereg Plain | 1 226 000 € |
| 3. | Grassland restoration and marsh protection in Egyek-Pusztakócs marshes | 1 040 000 € |

HNPD - partner in additional 6 LIFE projects

Implemented ERDF projects

2004-2007

| No . | Title | Total budget |
|-----------------|--|---------------------|
| 1. | Land purchase in Natura 2000 sites designated for the Great Bustard (<i>Otis tarda</i>) | 1 075 000 € |
| 2. | Smaller scale habitat restoration projects | 850 000 € |
| 3. | Elimination of 22 kV open electric wirelines in the HNP (80 km) | 4 200 000 € |

Implemented ERDF projects

2008-2012

| No . | Title | Budget |
|-----------------|--|--------------------|
| 1. | Landscape-scale habitat restoration – II. phase | 2 040 000 € |
| 2. | Wetland and grassland restoration projects in the region | 1 210 000 € |
| 3. | Elimination of 22 kV open electric wirelines in the HNP (23 km) | 1 700 000 € |

Ongoing ERDF projects - 1

2013-2015

| No. | Title | Budget |
|-----|--|-------------|
| 1. | Landscape-scale habitat restoration – III. phase | 1 350 000 € |
| 2. | Landscape scale habitat rehabilitation in the former military bombing site in the Hortobágy NP | 7 140 000 € |
| 3. | Elimination or insulation of 22 kV open electric wirelines in the HNP | 2 700 000 € |

Ongoing ERDF projects - 2 2013-2015

| No. | Title | Budget |
|-----|---|-------------|
| 4. | Conservation infrastructure development in the HNP | 852 000 € |
| 5. | Rehabilitation of small wetland bodies in the N. Lowland region | 1 800 000 € |
| 6. | Forest protection measures in the N. Lowland region | 1 300 000 € |

~ 30 million € in the 2002-2015 period

Lessons learned

- Co-financing 😊
- Bureaucracy, cost benefit analysis (CBA) in nature conservation projects 😐
- Project management 😞 ➔ 😐 ➔ 😊
- Legal difficulties: public procurement, preliminary archaeological inventories 😞
- Financial sustainability 😊
- Monitoring 😐



Restoration of pannonic steppes, marshes of HNP

LIFE02NAT/H/8634

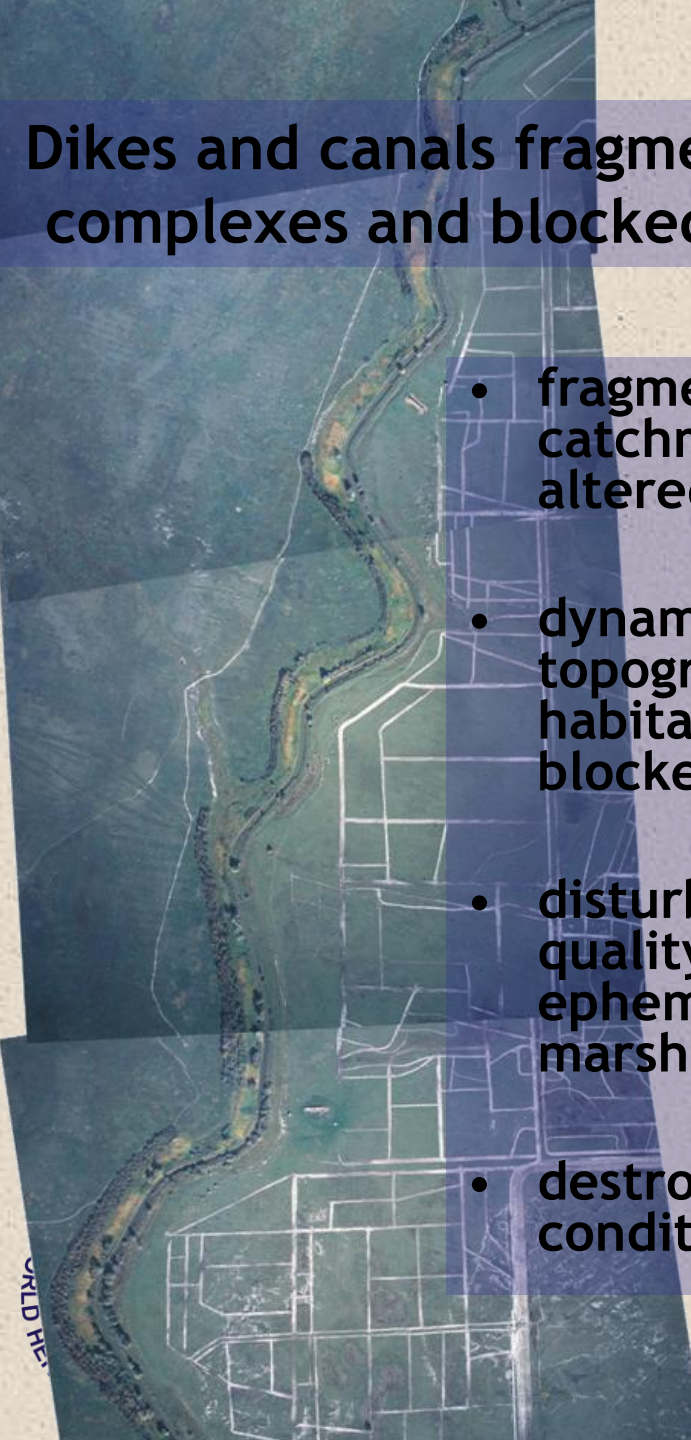
2002-2005

Continued from Structural Funds Projects 2006-

Habitat targeted:

Pannonic steppes and marshes (1530), a priority habitat type





Dikes and canals fragmented the natural grassland and wetland complexes and blocked the natural surface water movements

- fragmented grasslands - fragmented local catchments, natural hydrology has been significantly altered
- dynamic processes connected to the surface micro-topography and overland-flow maintaining the habitat diversity of alkaline grasslands became blocked
- disturbed habitat structure, deterioration in habitat quality and biological diversity of alkaline steppes, ephemeral waters, seasonal and permanent alkaline marshes
- destroyed traditional land use: unsuitable conditions for extensive grazing

**1600 km of channels and dykes in the HNP
built in the communist times**





800 m³ concrete of water management structures removed



New technology developed
resulted in an absolutely
smooth surface

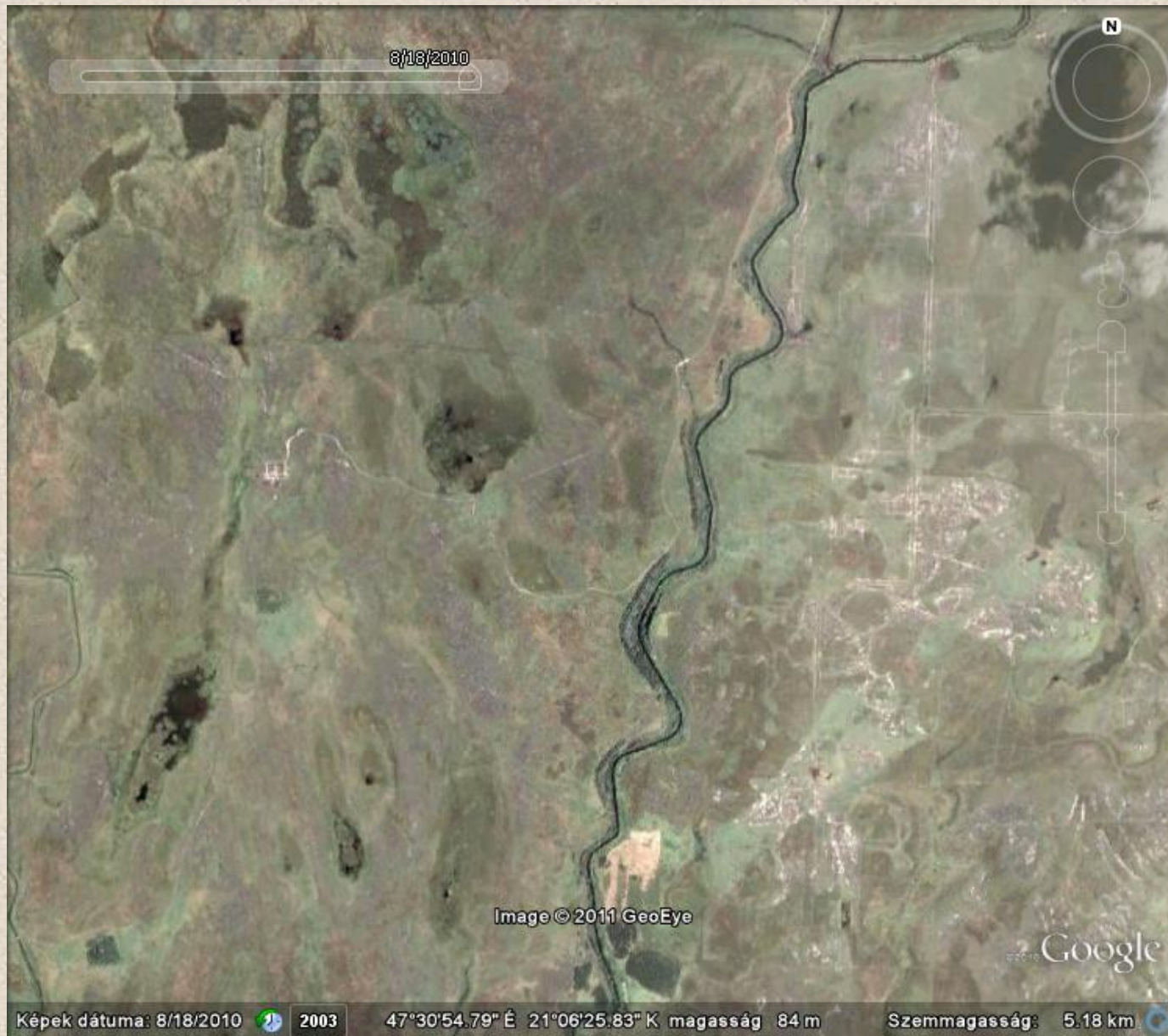


Restoration of backfilled canal tracks



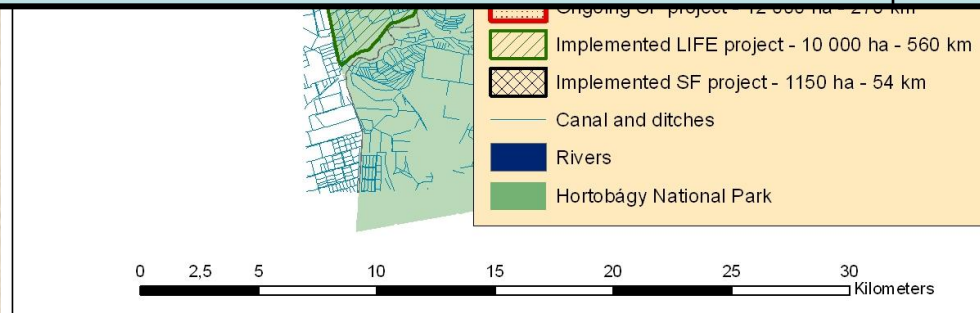
Dotterels (*Charadrius morinellus*) resting on the track of a backfilled canal

Seems it works well



Implemented and ongoing landscape scale restoration projects
in the Hortobágy National Park

| Length of eliminated canals of abandoned rice fields and grassland irrigation systems | Area restored |
|---|------------------|
| LIFE (2002-2005): 560 km | 10 000 ha |
| ERDF I. (2005-2007): 53.5 km | 1150 ha |
| ERDF II.(2010-2013): 266 km | 12 420 ha |
| ERDF III. (2011-2014): 177.5 km | 5660 ha |
| Total: | 29 230 ha |













© 2013 Google
Image © 2013 DigitalGlobe

Google



Thank you!

