

Bird species' status and trends reporting format for the period 2008-2012 (Annex 2)

1. Species Information

1.1 Member State	Hungary
1.2.2 Natura 2000 code	A705
1.3 Species name	Anas platyrhynchos platyrhynchos
1.3.1 Sub-specific population	
1.4 Alternative species name	
1.5 Common name	tőkés réce
1.6 Season	Breeding (B)

2. Population size

2.1 Year or period	2000-2012
2.2 Population size	a)unit number of pairs (p) b)minimum 50000 c)maximum
2.3 Type of estimate	Where accurate estimate is not available (Minimum)
2.4 Method used	Estimate based on expert opinion with no or minimal sampling (1)
2.5 Quality	Poor (1)
2.6 Sources	Barabás, L. (2013): Breeding distribution of Hungarian Duck species. Hungarian Waterfowl Publications 23: 79-120. Faragó, S. & Gosztonyi, L. (2009): Population Trend, Phenology and Dispersion of Common Waterfowl Species in Hungary Based on a Ten Year Long Time Series of the Hungarian Waterfowl Monitoring. Acta Silv. Lign. Hung., Vol. 5: 83-107.

2.8 Additional information

3. Population trend

3.1 Short-term trend (last 12 years)

3.1.1 Period	2000-2012
3.1.2 Trend direction	Decrease (-)
3.1.3 Magnitude	a)Min 10 b)Max 30
3.1.4 Method used	Estimate based on expert opinion with no or minimal sampling (1)
3.1.5 Quality	Poor (1)
3.1.6 Sources	MME Nomenclator Bizottság (2008): Magyarország madarainak névjegyzéke. Nomenclator avium Hungariae. Magyar Madártani és Természetvédelmi Egyesület, Budapest. p. 278. Barabás, L. (2013): Breeding distribution of Hungarian Duck species. Hungarian Waterfowl Publications 23: 79-120. Faragó, S. & Gosztonyi, L. (2009): Population Trend, Phenology and Dispersion of Common Waterfowl Species in Hungary Based on a Ten Year Long Time Series of the Hungarian Waterfowl Monitoring. Acta Silv. Lign. Hung., Vol. 5: 83-107.

3.2 Long-term trend (since c. 1980)

Bird species' status and trends reporting format for the period 2008-2012 (Annex 2)

3.2.1 Period	1980-2012
3.2.2 Trend direction	Unknown (x)
3.2.3 Magnitude	a)Min b)Max
3.2.4 Method used	Absent data (0)
3.2.5 Quality	Poor (1)
3.2.6 Sources	
3.3 Additional information	

4. Breeding distribution map and range size

4.1 Year or period	2000-2012
4.2 Sensitive species	No
4.3 Distribution map	Yes
4.4 Additional distribution map	No
4.5 Range map	Yes
4.6 Range surface area	93011
4.7 Method used	Complete survey or a statistically robust estimate (3)
4.8 Quality	Good (3)
4.9 Sources	Breeding bird (MME RTM) database.
4.11 Additional information	The distribution and range map made by using breeding probability data.

5. Breeding range trend

5.1 Short-term trend (last 12 years)	
5.1.1 Period	2000-2012
5.1.2 Trend direction	Unknown (x)
5.1.3 Magnitude	a)Min b)Max
5.1.4 Method used	Estimate based on expert opinion with no or minimal sampling (1)
5.1.5 Quality	Poor (1)
5.1.6 Sources	Consultation with national experts.

5.2 Long-term trend (since c. 1980)

5.2.1 Period	1980-2012
5.2.2 Trend direction	Unknown (x)
5.2.3 Magnitude	a)Min b)Max
5.2.4 Method used	Absent data (0)
5.2.5 Quality	Poor (1)
5.2.6 Sources	
5.3 Additional information	

Bird species' status and trends reporting format for the period 2008-2012 (Annex 2)

6. Progress in work related to international Species Action Plans (SAPs), Management Plans (MPs) and Brief Management Statements (BMSs)

6.1 Type of plan	No Plan (NA)
6.2 National plan adopted?	N/A
6.3 Measures linked to SAP/MP/BMS	
6.4 Further Information	

7. Main pressures and threats

8. SPA coverage and conservation measures

8.1 Population inside the SPA network

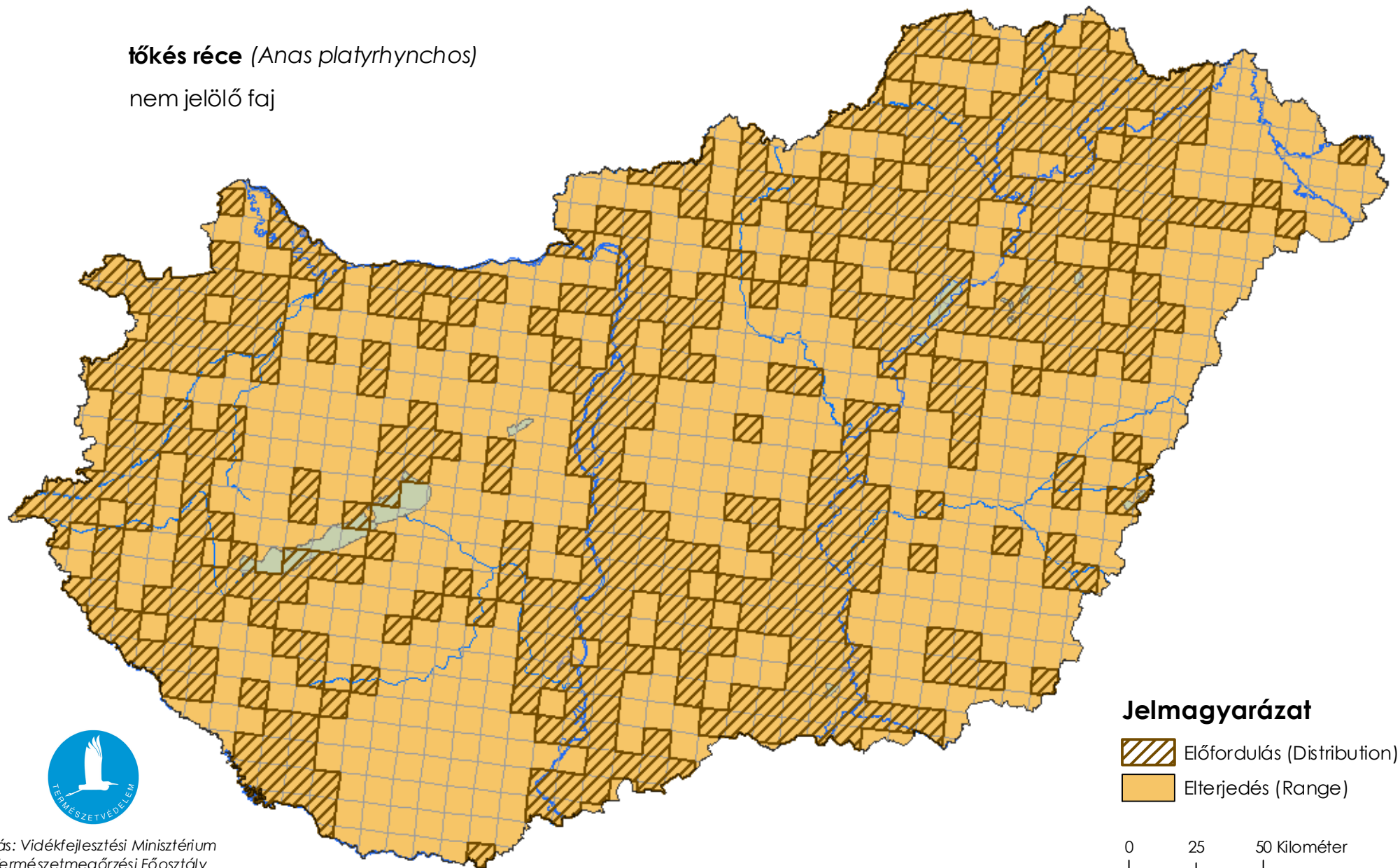
8.1.1 Population size	a)unit	N/A	b)minimum	c)maximum
8.1.2 Method used	N/A			
8.1.3 Short-term trend of population	N/A			

8.2 Conservation Measures

Térképmelléklet a madárvédelmi irányelv 12. cikke alapján készített országjelentéshez 2013.

tőkés réce (*Anas platyrhynchos*)

nem jelölő faj



Jelmagyarázat

 Előfordulás (Distribution)

 Elterjedés (Range)

0 25 50 Kilométer

