

Bird species' status and trends reporting format for the period 2008-2012 (Annex 2)

1. Species Information

1.1 Member State	Hungary
1.2.2 Natura 2000 code	A699
1.3 Species name	Ardea cinerea cinerea
1.3.1 Sub-specific population	
1.4 Alternative species name	
1.5 Common name	szürke gém
1.6 Season	Breeding (B)

2. Population size

2.1 Year or period	2008-2012
2.2 Population size	a)unit number of pairs (p) b)minimum 3000 c)maximum 4000
2.3 Type of estimate	The best available single figure or range (Best estimate)
2.4 Method used	Estimate based on expert opinion with no or minimal sampling (1)
2.5 Quality	Moderate (2)
2.6 Sources	National Park Directorates databases Breeding bird (MME RTM) database.

2.8 Additional information

3. Population trend

3.1 Short-term trend (last 12 years)

3.1.1 Period	2000-2012
3.1.2 Trend direction	Stable (0)
3.1.3 Magnitude	a)Min b)Max
3.1.4 Method used	Estimate based on expert opinion with no or minimal sampling (1)
3.1.5 Quality	Moderate (2)
3.1.6 Sources	Faragó S., Gosztonyi L. (2013): A szürke gém (Ardea cinerea) vonuló és telelő állománya Magyarországon (1996-2012). Magyar Vízivad Közlemények 23. 275-309 p. National Park Directorates databases Breeding bird (MME RTM) database.

3.2 Long-term trend (since c. 1980)

3.2.1 Period	1980-2012
3.2.2 Trend direction	Unknown (x)
3.2.3 Magnitude	a)Min b)Max
3.2.4 Method used	Absent data (0)
3.2.5 Quality	Poor (1)
3.2.6 Sources	
3.3 Additional information	

4. Breeding distribution map and range size

Bird species' status and trends reporting format for the period 2008-2012 (Annex 2)

4.1 Year or period	2000-2012
4.2 Sensitive species	No
4.3 Distribution map	Yes
4.4 Additional distribution map	No
4.5 Range map	Yes
4.6 Range surface area	16081
4.7 Method used	Complete survey or a statistically robust estimate (3)
4.8 Quality	Good (3)
4.9 Sources	Breeding bird (MME RTM) database.
4.11 Additional information	The distribution and range map made by using breeding probability data.

5. Breeding range trend

5.1 Short-term trend (last 12 years)

5.1.1 Period	2000-2012
5.1.2 Trend direction	Stable (0)
5.1.3 Magnitude	a)Min b)Max
5.1.4 Method used	Estimate based on expert opinion with no or minimal sampling (1)
5.1.5 Quality	Poor (1)
5.1.6 Sources	Consultation with national experts.

5.2 Long-term trend (since c. 1980)

5.2.1 Period	1980-2012
5.2.2 Trend direction	Unknown (x)
5.2.3 Magnitude	a)Min b)Max
5.2.4 Method used	Absent data (0)
5.2.5 Quality	Poor (1)
5.2.6 Sources	
5.3 Additional information	

6. Progress in work related to international Species Action Plans (SAPs), Management Plans (MPs) and Brief Management Statements (BMSs)

6.1 Type of plan	No Plan (NA)
6.2 National plan adopted?	N/A
6.3 Measures linked to SAP/MP/BMS	
6.4 Further Information	

7. Main pressures and threats

Bird species' status and trends reporting format for the period 2008-2012 (Annex 2)

8. SPA coverage and conservation measures

8.1 Population inside the SPA network

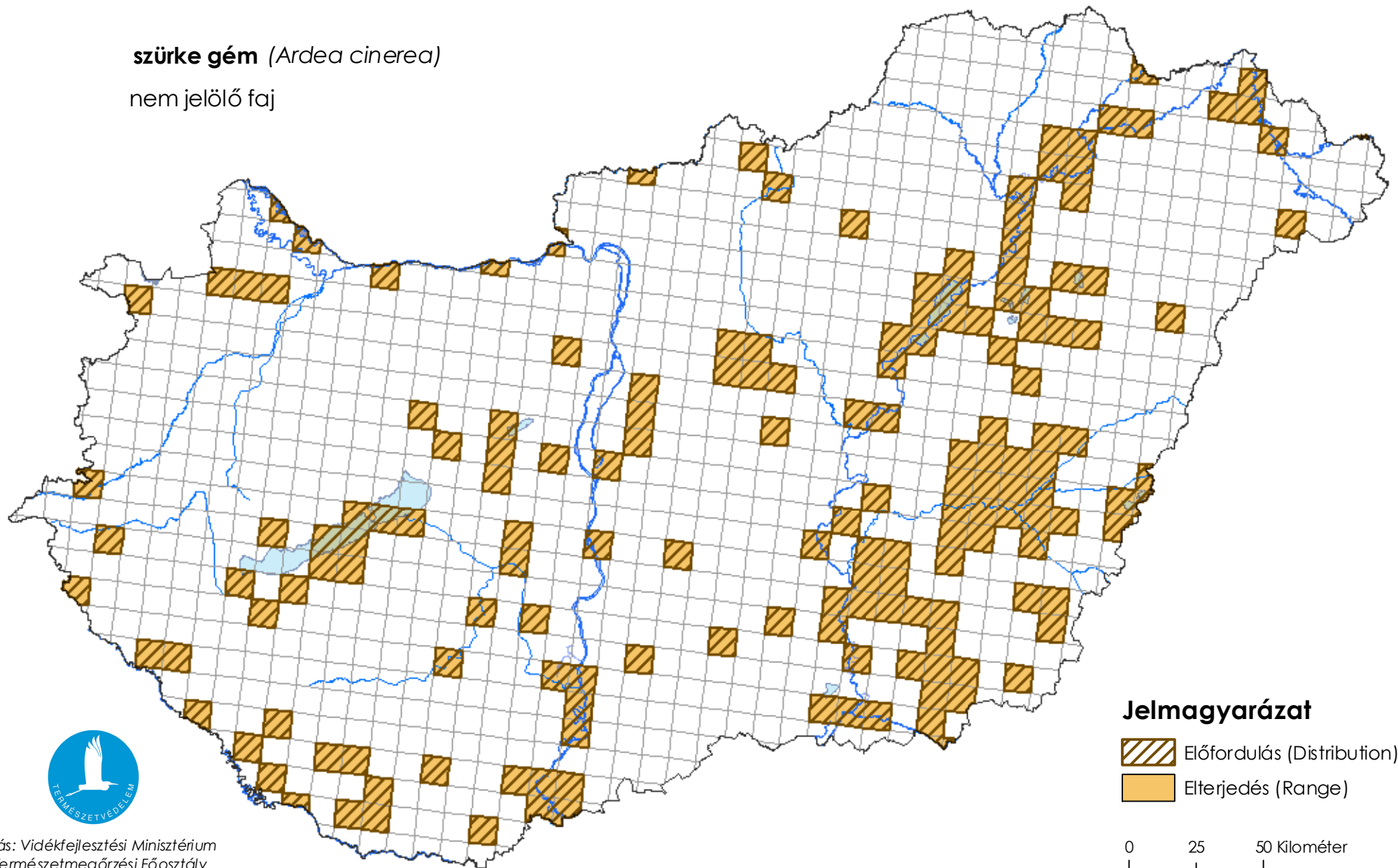
8.1.1 Population size	a)unit	N/A	b)minimum	c)maximum
8.1.2 Method used	N/A			
8.1.3 Short-term trend of population	N/A			

8.2 Conservation Measures

Térképmelléklet a madárvédelmi irányelv 12. cikke alapján készített országjelentéshez 2013.

szürke gém (*Ardea cinerea*)

nem jelölő faj



Forrás: Vidékfejlesztési Minisztérium
Természetmegőrzési Főosztály