

Bird species' status and trends reporting format for the period 2008-2012 (Annex 2)

1. Species Information

1.1 Member State	Hungary
1.2.2 Natura 2000 code	A261
1.3 Species name	Motacilla cinerea
1.3.1 Sub-specific population	
1.4 Alternative species name	
1.5 Common name	hegyi billegető
1.6 Season	Breeding (B)

2. Population size

2.1 Year or period	2008-2012
2.2 Population size	a)unit number of pairs (p) b)minimum 220 c)maximum 320
2.3 Type of estimate	The best available single figure or range (Best estimate)
2.4 Method used	Estimate based on expert opinion with no or minimal sampling (1)
2.5 Quality	Poor (1)
2.6 Sources	National Park Directorates databases. Breeding bird (MME RTM) database.

2.8 Additional information

3. Population trend

3.1 Short-term trend (last 12 years)

3.1.1 Period	2000-2012
3.1.2 Trend direction	Stable (0)
3.1.3 Magnitude	a)Min b)Max
3.1.4 Method used	Estimate based on expert opinion with no or minimal sampling (1)
3.1.5 Quality	Poor (1)
3.1.6 Sources	National Park Directorates databases. Breeding bird (MME RTM) database.

3.2 Long-term trend (since c. 1980)

3.2.1 Period	1980-2012
3.2.2 Trend direction	Unknown (x)
3.2.3 Magnitude	a)Min b)Max
3.2.4 Method used	Absent data (0)
3.2.5 Quality	Poor (1)
3.2.6 Sources	
3.3 Additional information	

4. Breeding distribution map and range size

Bird species' status and trends reporting format for the period 2008-2012 (Annex 2)

4.1 Year or period	2000-2012
4.2 Sensitive species	No
4.3 Distribution map	Yes
4.4 Additional distribution map	No
4.5 Range map	Yes
4.6 Range surface area	6418
4.7 Method used	Complete survey or a statistically robust estimate (3)
4.8 Quality	Good (3)
4.9 Sources	Breeding bird (MME RTM) database.
4.11 Additional information	The distribution and range map made by using breeding probability data.

5. Breeding range trend

5.1 Short-term trend (last 12 years)

5.1.1 Period	2000-2012
5.1.2 Trend direction	Unknown (x)
5.1.3 Magnitude	a)Min b)Max
5.1.4 Method used	Absent data (0)
5.1.5 Quality	Poor (1)
5.1.6 Sources	

5.2 Long-term trend (since c. 1980)

5.2.1 Period	1980-2012
5.2.2 Trend direction	Decrease (-)
5.2.3 Magnitude	a)Min 10 b)Max 20
5.2.4 Method used	Estimate based on expert opinion with no or minimal sampling (1)
5.2.5 Quality	Poor (1)
5.2.6 Sources	Consultation with national experts.
5.3 Additional information	

6. Progress in work related to international Species Action Plans (SAPs), Management Plans (MPs) and Brief Management Statements (BMSs)

6.1 Type of plan	No Plan (NA)
6.2 National plan adopted?	N/A
6.3 Measures linked to SAP/MP/BMS	
6.4 Further Information	

7. Main pressures and threats

Pressure	impact	quality	location	sources
Forest and Plantation management & use (B02)	low importance (L)	Poor (1)	Inside the Member State (4)	Szakértői becslés

Bird species' status and trends reporting format for the period 2008-2012 (Annex 2)

use of biocides, hormones and chemicals (forestry) (B04)	low importance (L)	Poor (1)	Inside the Member State (4)	Szakértői becslés
droughts and less precipitations (M01.02)	medium importance (M)	Poor (1)	Inside the Member State (4)	Szakértői becslés

8. SPA coverage and conservation measures

8.1 Population inside the SPA network

8.1.1 Population size a)unit number of pairs b)minimum 170 c)maximum 280
(p)

8.1.2 Method used Estimate based on partial data with some extrapolation and/or modelling (2)

8.1.3 Short-term trend of population N/A

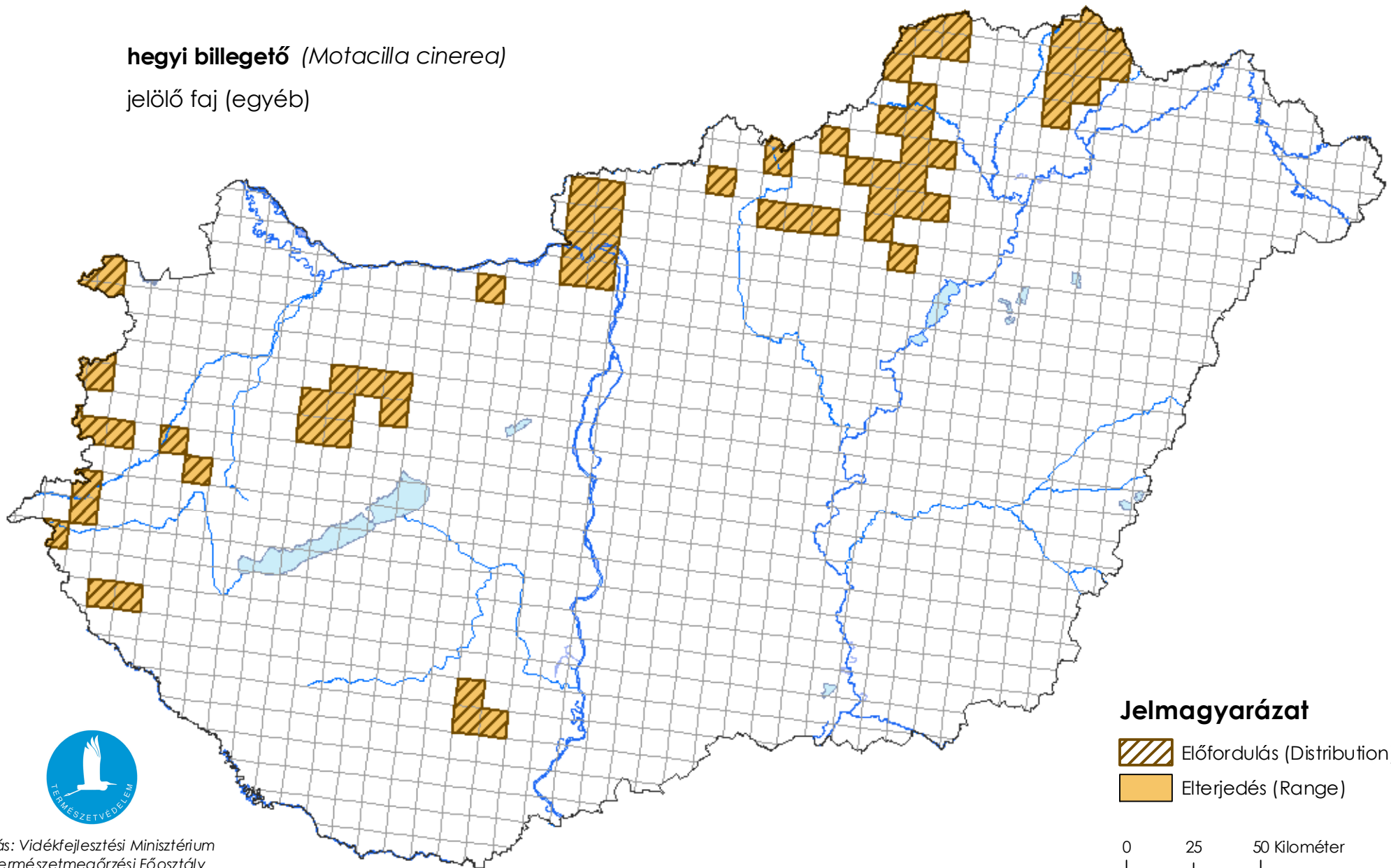
8.2 Conservation Measures

8.2.1 Measure	8.2.2 Type	8.2.3 Ranking	8.2.4 Location	8.2.5 Broad Evaluation
Adapt forest management (3.2)	Administrative One-off	low importance (L)	Both	Maintain
Establish protected areas/sites (6.1)	Legal One-off	medium importance (M)	Inside	Maintain
Legal protection of habitats and species (6.3)	Legal One-off	medium importance (M)	Both	Maintain



Térképmelléklet a madárvédelmi irányelv 12. cikke alapján készített országjelentéshez 2013.

hegyi billegető (*Motacilla cinerea*)

jelölő faj (egyéb)



Jelmagyarázat

-  Előfordulás (Distribution)
-  Elterjedés (Range)

0 25 50 Kilométer

