

Bird species' status and trends reporting format for the period 2008-2012 (Annex 2)

1. Species Information

| | |
|-------------------------------|-----------------|
| 1.1 Member State | Hungary |
| 1.2.2 Natura 2000 code | A260 |
| 1.3 Species name | Motacilla flava |
| 1.3.1 Sub-specific population | |
| 1.4 Alternative species name | |
| 1.5 Common name | sárga billegető |
| 1.6 Season | Breeding (B) |

2. Population size

| | |
|----------------------|---|
| 2.1 Year or period | 2000-2012 |
| 2.2 Population size | a)unit number of pairs (p) b)minimum 150000 c)maximum 225000 |
| 2.3 Type of estimate | The best available single figure or range (Best estimate) |
| 2.4 Method used | Estimate based on partial data with some extrapolation and/or modelling (2) |
| 2.5 Quality | Poor (1) |
| 2.6 Sources | MME Nomenclator Bizottság (2008): Magyarország madarainak névjegyzéke. Nomenclator avium Hungariae. Magyar Madártani és Természetvédelmi Egyesület, Budapest. p. 278. |

2.8 Additional information

3. Population trend

3.1 Short-term trend (last 12 years)

| | |
|-----------------------|---|
| 3.1.1 Period | 1999-2012 |
| 3.1.2 Trend direction | Stable (0) |
| 3.1.3 Magnitude | a)Min b)Max |
| 3.1.4 Method used | Estimate based on partial data with some extrapolation and/or modelling (2) |
| 3.1.5 Quality | Moderate (2) |
| 3.1.6 Sources | National common bird monitoring scheme (MMM) database. Szép, T., Nagy, K., Nagy, Zs. & Halmos, G. (2012): Population trends of common breeding and wintering birds in Hungary, decline of long-distance migrant and farmland birds during 1999-2012. Ornis Hungarica 2012. 20(2): 13-63. |

3.2 Long-term trend (since c. 1980)

| | |
|----------------------------|--|
| 3.2.1 Period | 1980-2012 |
| 3.2.2 Trend direction | Unknown (x) |
| 3.2.3 Magnitude | a)Min b)Max |
| 3.2.4 Method used | Absent data (0) |
| 3.2.5 Quality | Poor (1) |
| 3.2.6 Sources | |
| 3.3 Additional information | Short term trend analysed by TRIM. |

4. Breeding distribution map and range size

Bird species' status and trends reporting format for the period 2008-2012 (Annex 2)

| | |
|---------------------------------|--|
| 4.1 Year or period | 2000-2012 |
| 4.2 Sensitive species | No |
| 4.3 Distribution map | Yes |
| 4.4 Additional distribution map | No |
| 4.5 Range map | Yes |
| 4.6 Range surface area | 61941 |
| 4.7 Method used | Complete survey or a statistically robust estimate (3) |
| 4.8 Quality | Good (3) |
| 4.9 Sources | National common bird monitoring scheme (MMM) database. and Breeding bird (MME RTM) database. |
| 4.11 Additional information | The distribution and range map made by using modeling techniquea and breeding probability data. The model based on national common bird monitoring data. |

5. Breeding range trend

5.1 Short-term trend (last 12 years)

| | |
|-----------------------|----------------------------------|
| 5.1.1 Period | 2000-2012 |
| 5.1.2 Trend direction | Unknown (x) |
| 5.1.3 Magnitude | a)Min b)Max |
| 5.1.4 Method used | Absent data (0) |
| 5.1.5 Quality | Poor (1) |
| 5.1.6 Sources | |

5.2 Long-term trend (since c. 1980)

| | |
|----------------------------|----------------------------------|
| 5.2.1 Period | 1980-2012 |
| 5.2.2 Trend direction | Unknown (x) |
| 5.2.3 Magnitude | a)Min b)Max |
| 5.2.4 Method used | Absent data (0) |
| 5.2.5 Quality | Poor (1) |
| 5.2.6 Sources | |
| 5.3 Additional information | |

6. Progress in work related to international Species Action Plans (SAPs), Management Plans (MPs) and Brief Management Statements (BMSs)

| | |
|-----------------------------------|--------------|
| 6.1 Type of plan | No Plan (NA) |
| 6.2 National plan adopted? | N/A |
| 6.3 Measures linked to SAP/MP/BMS | |
| 6.4 Further Information | |

Bird species' status and trends reporting format for the period 2008-2012 (Annex 2)

7. Main pressures and threats

8. SPA coverage and conservation measures

8.1 Population inside the SPA network

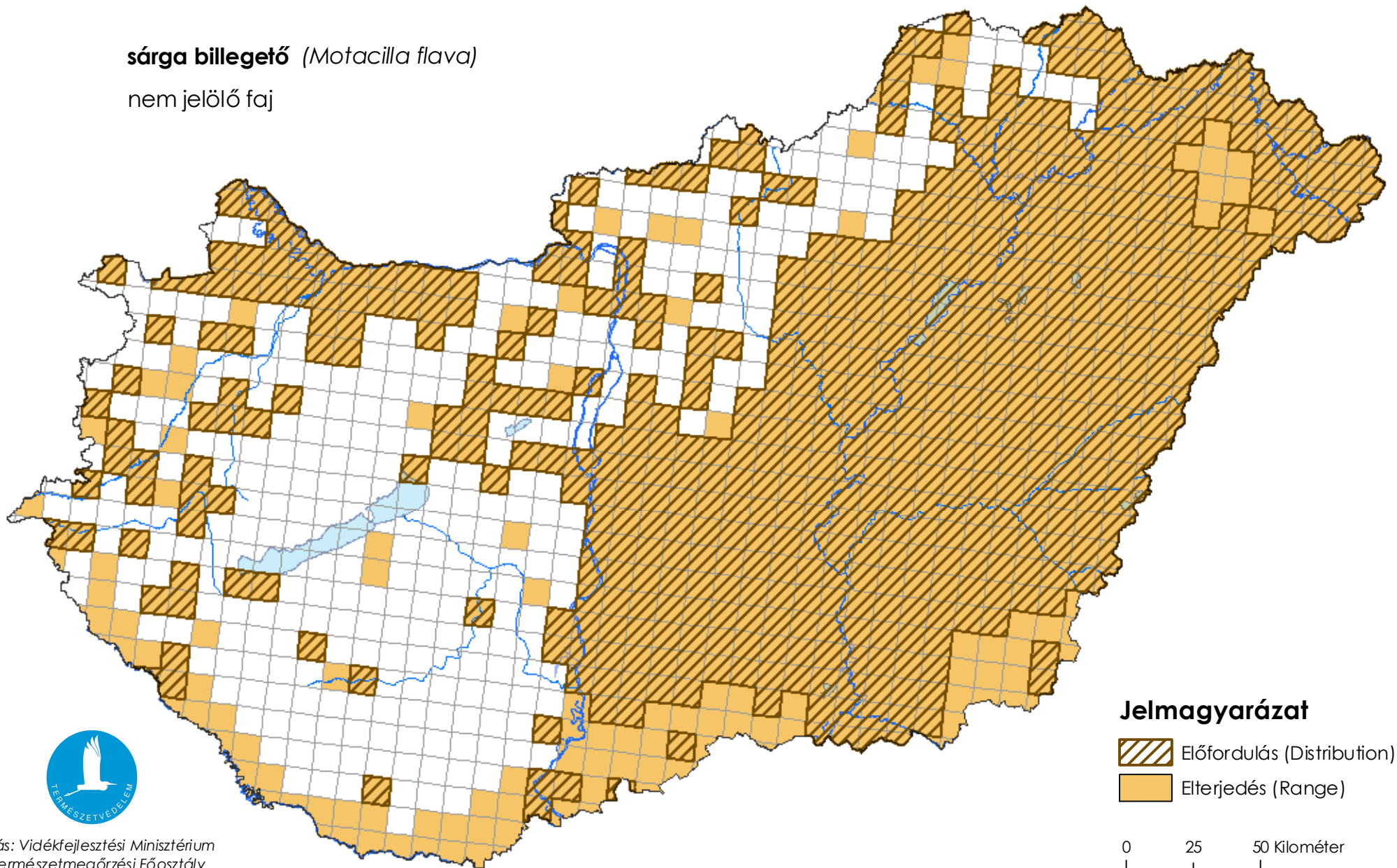
| | | | | |
|--------------------------------------|--------|-----|-----------|-----------|
| 8.1.1 Population size | a)unit | N/A | b)minimum | c)maximum |
| 8.1.2 Method used | N/A | | | |
| 8.1.3 Short-term trend of population | N/A | | | |

8.2 Conservation Measures



Térképmelléklet a madárvédelmi irányelv 12. cikke alapján készített országjelentéshez 2013.

sárga billegető (*Motacilla flava*)

nem jelölő faj



Jelmagyarázat

-  Előfordulás (Distribution)
-  Elterjedés (Range)

0 25 50 Kilométer

