

Report on the main results of the surveillance under article 17 for annex I habitat types (Annex D)

CODE: 6190

NAME: Rupicolous pannonic grasslands (Stipo-Festucetalia pallentis)

1. National Level

1.1 Maps

1.1.1 Distribution Map	Yes
1.1.2 Distribution Method	Estimate based on partial data with some extrapolation and/or modelling (2)
1.1.3 Year or period	2007-2012
1.1.4 Additional map	No
1.1.5 Range Map	Yes

2. Biogeographical Or Marine Level

2.1 Biogeographical Region

Pannonian (PAN)

2.2 Published

Böloni J., Molnár Zs. & Kun A (2011): Magyarország Élőhelyei Vegetációtípusok leírása és határozója ÁNÉR 2011: MTA Ökológiai és Botanikai Kutatóintézete, Vácrátót.

A Nemzeti Biodiverzitás-monitorozó Rendszer keretében 2007-2012 között végzett felmérések kutatási jelentése

2.3 Range of the habitat type in the biogeographical region or marine region

2.3.1 Surface area - Range (km ²)	18726
2.3.2 Range method used	Estimate based on partial data with some extrapolation and/or modelling (2)
2.3.3 Short-term trend period	2001-2012
2.3.4 Short-term trend direction	stable (0)
2.3.5 Short-term trend magnitude	min max
2.3.6 Long-term trend period	
2.3.7 Long-term trend direction	N/A
2.3.8 Long-term trend magnitude	min max
2.3.9 Favourable reference range	area (km ²) operator approximately equal to (≈) unknown No method
2.3.10 Reason for change	Improved knowledge/more accurate data Use of different method

2.4 Area covered by Habitat

2.4.1 Surface area (km ²)	12
2.4.2 Year or period	2007-2012
2.4.3 Method used	Estimate based on partial data with some extrapolation and/or modelling (2)
2.4.4 Short-term trend period	2001-2012
2.4.5 Short-term trend direction	stable (0)
2.4.6 Short-term trend magnitude	min max

Report on the main results of the surveillance under article 17 for annex I habitat types (Annex D)

2.4.7 Short term trend method used	Estimate based on partial data with some extrapolation and/or modelling (2)
2.4.8 Long-term trend period	
2.4.9 Long-term trend direction	N/A
2.4.10 Long-term trend magnitude	min max
2.4.11 Long term trend method used	N/A
2.4.12 Favourable reference area	area (km) operator approximately equal to (≈) unknown No method
2.4.13 Reason for change	Improved knowledge/more accurate data

2.5 Main Pressures

Pressure	ranking	pollution qualifier(s)
open cast mining (C01.04.01)	medium importance (M)	N/A
damage caused by game (excess population density) (F03.01.01)	medium importance (M)	N/A
species composition change (succession) (K02.01)	medium importance (M)	N/A
Outdoor sports and leisure activities, recreational activities (G01)	high importance (H)	N/A
Urbanised areas, human habitation (E01)	medium importance (M)	N/A
invasive non-native species (I01)	medium importance (M)	N/A
problematic native species (I02)	medium importance (M)	N/A
competition (flora) (K04.01)	low importance (L)	N/A

2.5.1 Method used – pressures based exclusively or to a larger extent on real data from sites/occurrences or other

2.6 Main Threats

Threat	ranking	pollution qualifier(s)
open cast mining (C01.04.01)	medium importance (M)	N/A
damage caused by game (excess population density) (F03.01.01)	medium importance (M)	N/A
species composition change (succession) (K02.01)	medium importance (M)	N/A
Outdoor sports and leisure activities, recreational activities (G01)	high importance (H)	N/A
Urbanised areas, human habitation (E01)	medium importance (M)	N/A
invasive non-native species (I01)	medium importance (M)	N/A
problematic native species (I02)	medium importance (M)	N/A
competition (flora) (K04.01)	low importance (L)	N/A

2.6.1 Method used – threats expert opinion (1)

2.7 Complementary Information

Report on the main results of the surveillance under article 17 for annex I habitat types (Annex D)

2.7.1 Species

Carex humilis

Centaurea triumfetti

Globularia punctata

Iris pumila

Festuca pallens

Helianthemum canum

Phyteuma orbiculare

Polygama amara

Seseli leucospermum

Sedum spp.

Jovibarba globifera

Seseli osseum

Sesleria spp.

Stipa spp.

Teucrium montanum

Dianthus regis-stephani

Jurinea mollis

Pulsatilla grandis

Paronychia cephalotes

Biscutella laevigata

Draba lasiocarpa

Koeleria gracilis

Artemisia campestris

Euphorbia cyparissias

Coronilla varia

Polygonatum aviculare

Achillea collina

Viola arvensis

Ailanthus altissima

Pinus nigra

Robinia pseudoacacia

Titus spp.

2.7.2 Species method used

NBmR 5x5 km-es kvadrátok és N2000 területek élőhelytérképezése, az NBmR monitorozásra kiválasztott társulásainak cönológiai felvételezése, valamint a közösségi jelentőségű élőhelytípusok monitorozása eredményeinek összegzése és értékelése alapján.

2.7.3 Justification of % - thresholds for trends

Report on the main results of the surveillance under article 17 for annex I habitat types (Annex D)

2.7.4 Structure and functions - methods used	Estimate based on partial data with some extrapolation and/or modelling (2)
2.7.5 Other relevant information	A struktúra-funkció megítélése 5 komponensű (fajkészlet, fragmentáltság, inváziós fertőzöttség, termőhelyi sérülékenység, kezelések sikeressége) szempontrendszer alapján történt.

2.8 Conclusions (assessment of conservation status at end of reporting period)

2.8.1 Range	assessment Favourable (FV) qualifiers N/A
2.8.2 Area	assessment Favourable (FV) qualifiers N/A
2.8.3 Specific structures and functions (incl Species)	assessment Inadequate (U1) qualifiers stable (=)
2.8.4 Future prospects	assessment Inadequate (U1) qualifiers stable (=)
2.8.5 Overall assessment of Conservation Status	Inadequate (U1)
2.8.5 Overall trend in Conservation Status	stable (=)

3. Natura 2000 coverage conservation measures - Annex I habitat types on biogeographical level

3.1 Area covered by habitat

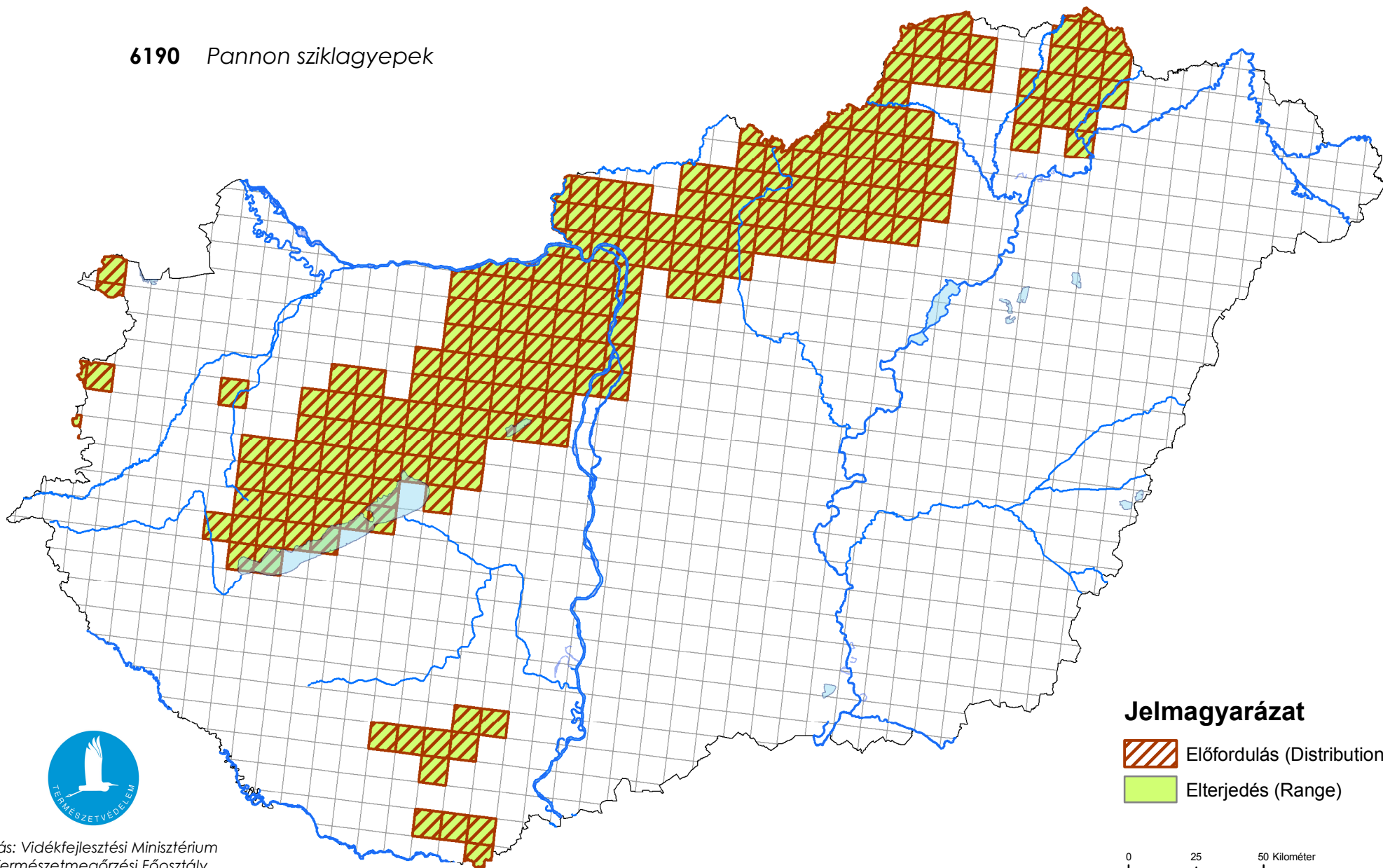
3.1.1 Surface area (km ²)	min 10	max 11
3.1.2 Method used	Estimate based on partial data with some extrapolation and/or modelling (2)	
3.1.3. Trend of surface area	N/A	

3.2 Conversation Measures

3.2.1 Measure	3.2.2 Type	3.2.3 Ranking	3.2.4 Location	3.2.5 Broad Evaluation
Maintaining grasslands and other open habitats (2.1)	Legal Administrative Contractual Recurrent	high importance (H)	Both	Maintain Enhance Long term
Other agriculture-related measures (2.0)	Legal Administrative Recurrent	high importance (H)	Both	Maintain Long term
Establish protected areas/sites (6.1)	Legal One-off	high importance (H)	Both	Maintain Long term
Regulation/ Management of hunting and taking (7.1)	Recurrent	medium importance (M)	Inside	Enhance

Térképmelléklet az élőhelyvédelmi irányelv 17. cikke alapján készített országjelentéshez 2013.

6190 Pannon sziklagyepek



Forrás: Vidékfejlesztési Minisztérium
Természetmegőrzési Főosztály