

Report on the main results of the surveillance under article 17 for annex I habitat types (Annex D)

CODE: 6240

NAME: Sub-Pannonic steppic grasslands

1. National Level

1.1 Maps

1.1.1 Distribution Map	Yes
1.1.2 Distribution Method	Estimate based on partial data with some extrapolation and/or modelling (2)
1.1.3 Year or period	2007-2012
1.1.4 Additional map	No
1.1.5 Range Map	Yes

2. Biogeographical Or Marine Level

2.1 Biogeographical Region

Pannonian (PAN)

2.2 Published

Bölöni J., Molnár Zs. & Kun A (2011): Magyarország Élőhelyei Vegetációtípusok leírása és határozója ÁNÉR 2011: MTA Ökológiai és Botanikai Kutatóintézete, Vácrátót.

Molnár, Zs., M. Biró, J. Bölöni & F. Horváth (2008): Distribution of the (semi-) natural habitats in Hungary I.: Marshes and grasslands, Acta Botanica Hungarica 50 (Suppl): 59-105.

Ilyés E & Bölöni J. (szerk.): Lejtősztyepek, löszgyepek és erdősztyeprétek Magyarországon. Budapest. 2007. MTA ÖBKI.

A Nemzeti Biodiverzitás-monitorozó Rendszer keretében 2007-2012 között végzett felmérések kutatási jelentése

2.3 Range of the habitat type in the biogeographical region or marine region

2.3.1 Surface area - Range (km ²)	25545
2.3.2 Range method used	Estimate based on partial data with some extrapolation and/or modelling (2)
2.3.3 Short-term trend period	2001-2012
2.3.4 Short-term trend direction	stable (0)
2.3.5 Short-term trend magnitude	min max
2.3.6 Long-term trend period	
2.3.7 Long-term trend direction	N/A
2.3.8 Long-term trend magnitude	min max
2.3.9 Favourable reference range	area (km ²) operator approximately equal to (≈) unkown No method
2.3.10 Reason for change	Improved knowledge/more accurate data Use of different method

2.4 Area covered by Habitat

2.4.1 Surface area (km ²)	250
2.4.2 Year or period	2007-2012
2.4.3 Method used	Estimate based on partial data with some extrapolation and/or modelling (2)
2.4.4 Short-term trend period	2001-2012
2.4.5 Short-term trend direction	stable (0)
2.4.6 Short-term trend magnitude	min max

Report on the main results of the surveillance under article 17 for annex I habitat types (Annex D)

2.4.7 Short term trend method used	Estimate based on partial data with some extrapolation and/or modelling (2)
2.4.8 Long-term trend period	
2.4.9 Long-term trend direction	N/A
2.4.10 Long-term trend magnitude	min max
2.4.11 Long term trend method used	N/A
2.4.12 Favourable reference area	area (km) operator more than (>) unknown No method
2.4.13 Reason for change	Improved knowledge/more accurate data

2.5 Main Pressures

Pressure	ranking	pollution qualifier(s)
invasive non-native species (I01)	high importance (H)	N/A
species composition change (succession) (K02.01)	high importance (H)	N/A
removal of hedges and copses or scrub (A10.01)	medium importance (M)	N/A
Outdoor sports and leisure activities, recreational activities (G01)	medium importance (M)	N/A
damage caused by game (excess population density) (F03.01.01)	medium importance (M)	N/A
problematic native species (I02)	medium importance (M)	N/A
burning down (J01.01)	medium importance (M)	N/A
abandonment of pastoral systems, lack of grazing (A04.03)	medium importance (M)	N/A
competition (flora) (K04.01)	medium importance (M)	N/A
Forest and Plantation management & use (B02)	low importance (L)	N/A

2.5.1 Method used – pressures based exclusively or to a larger extent on real data from sites/occurrences or other

2.6 Main Threats

Threat	ranking	pollution qualifier(s)
invasive non-native species (I01)	high importance (H)	N/A
species composition change (succession) (K02.01)	high importance (H)	N/A
removal of hedges and copses or scrub (A10.01)	medium importance (M)	N/A
Outdoor sports and leisure activities, recreational activities (G01)	medium importance (M)	N/A
damage caused by game (excess population density) (F03.01.01)	medium importance (M)	N/A
problematic native species (I02)	medium importance (M)	N/A
burning down (J01.01)	medium importance (M)	N/A
abandonment of pastoral systems, lack of grazing (A04.03)	medium importance (M)	N/A
competition (flora) (K04.01)	medium importance (M)	N/A
Forest and Plantation management & use (B02)	low importance (L)	N/A

2.6.1 Method used – threats expert opinion (1)

2.7 Complementary Information

Report on the main results of the surveillance under article 17 for annex I habitat types (Annex D)

2.7.1 Species

Adonis vernalis

Artemisia austriaca

Aster linosyris

Astragalus austriacus

Crysopogon gryllus

Cleistogenes serotina

Dianthus pontederacae

Echium maculatum

Festuca valesiaca

Hesperis tristis

Inula oculus-cristi

Inula ensifolia

Iris pumila

Linum hirsutum

Linum tenuifolium

Pulsatilla spp.

Stipa spp.

Elymus repens

Bromus inermis

Eringium campestre

Crepis spp.

Poa angustifolia

Calamagrostis epigeios

Ailanthus altissima

Robinia pseudoacacia

Elaeagnus angustifolia

Asclepias syriaca

Erigeron annuus

Solidago adv. spp.

2.7.2 Species method used

NBmR 5x5 km-es kvadrátok és N2000 területek élőhelytérképezése, az NBmR monitorozásra kiválasztott társulásainak cönológiai felvételezése, valamint a közösségi jelentőségű élőhelytípusok monitorozása eredményeinek összegzése és értékelése alapján.

2.7.3 Justification of % - thresholds for trends

2.7.4 Structure and functions - methods used

Estimate based on partial data with some extrapolation and/or modelling (2)

2.7.5 Other relevant information

A struktúra-funkció megítélése 5 komponensű (fajkészlet, fragmentáltság, inváziós fertőzöttség, termőhelyi sérülékenység, kezelések sikeressége) szempontrendszer alapján történt.

Report on the main results of the surveillance under article 17 for annex I habitat types (Annex D)

2.8 Conclusions (assessment of conservation status at end of reporting period)

2.8.1 Range	assessment Favourable (FV) qualifiers N/A
2.8.2 Area	assessment Inadequate (U1) qualifiers stable (=)
2.8.3 Specific structures and functions (incl Species)	assessment Inadequate (U1) qualifiers stable (=)
2.8.4 Future prospects	assessment Inadequate (U1) qualifiers stable (=)
2.8.5 Overall assessment of Conservation Status	Inadequate (U1)
2.8.5 Overall trend in Conservation Status	stable (=)

3. Natura 2000 coverage conservation measures - Annex I habitat types on biogeographical level

3.1 Area covered by habitat

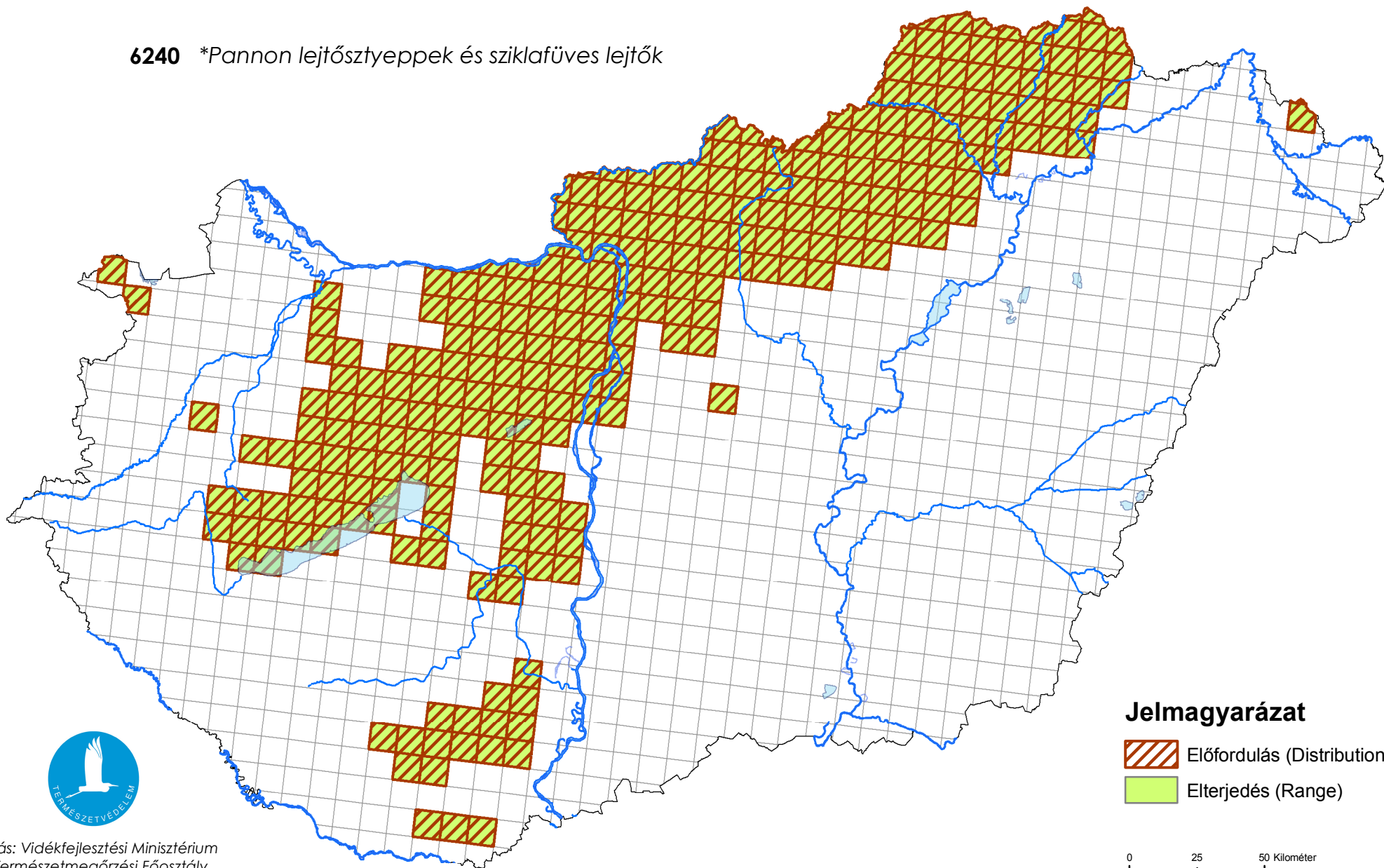
3.1.1 Surface area (km ²)	min	210	max	214
3.1.2 Method used	Estimate based on partial data with some extrapolation and/or modelling (2)			
3.1.3. Trend of surface area	N/A			

3.2 Conversation Measures

3.2.1 Measure	3.2.2 Type	3.2.3 Ranking	3.2.4 Location	3.2.5 Broad Evaluation
Other agriculture-related measures (2.0)	Legal Administrative Recurrent	high importance (H)	Both	Maintain Enhance Long term
Maintaining grasslands and other open habitats (2.1)	Recurrent	high importance (H)	Both	Maintain Enhance
Regulation/ Management of hunting and taking (7.1)	Administrative Recurrent	medium importance (M)	Both	Maintain Enhance
Establish protected areas/sites (6.1)	Legal	high importance (H)	Both	Maintain



Térképmelléklet az élőhelyvédelmi irányelv 17. cikke alapján készített országjelentéshez 2013.

6240 *Pannon lejtősztyepppek és sziklafüves lejtők



Forrás: Vidékfejlesztési Minisztérium
Természetmegőrzési Főosztály

Jelmagyarázat

-  Előfordulás (Distribution)
-  Elterjedés (Range)

0 25 50 Kilométer