

# Report on the main results of the surveillance under article 17 for annex I habitat types (Annex D)

CODE: 8310

NAME: Caves not open to the public

## 1. National Level

### 1.1 Maps

1.1.1 Distribution Map	Yes
1.1.2 Distribution Method	Estimate based on partial data with some extrapolation and/or modelling (2)
1.1.3 Year or period	2007-2012
1.1.4 Additional map	No
1.1.5 Range Map	Yes

## 2. Biogeographical Or Marine Level

2.1 Biogeographical Region	<b>Pannonian (PAN)</b>
2.2 Published	Boldogh – Estók (szerk.) (2007): Földalatti denevérszállások kataszttere I. – ANP Füzetek III. 340 p.

### 2.3 Range of the habitat type in the biogeographical region or marine region

2.3.1 Surface area - Range (km <sup>2</sup> )	13963
2.3.2 Range method used	Complete survey/Complete survey or a statistically robust estimate (3)
2.3.3 Short-term trend period	2001-2012
2.3.4 Short-term trend direction	increase (+)
2.3.5 Short-term trend magnitude	min max
2.3.6 Long-term trend period	
2.3.7 Long-term trend direction	N/A
2.3.8 Long-term trend magnitude	min max
2.3.9 Favourable reference range	area (km <sup>2</sup> ) operator approximately equal to (≈) unkown No method
2.3.10 Reason for change	Improved knowledge/more accurate data

### 2.4 Area covered by Habitat

2.4.1 Surface area (km <sup>2</sup> )	180
2.4.2 Year or period	2007-2012
2.4.3 Method used	Complete survey/Complete survey or a statistically robust estimate (3)
2.4.4 Short-term trend period	2001-2012
2.4.5 Short-term trend direction	increase (+)
2.4.6 Short-term trend magnitude	min max
2.4.7 Short term trend method used	Estimate based on partial data with some extrapolation and/or modelling (2)
2.4.8 Long-term trend period	
2.4.9 Long-term trend direction	N/A
2.4.10 Long-term trend magnitude	min max
2.4.11 Long term trend method used	N/A
2.4.12 Favourable reference area	area (km) operator approximately equal to (≈) unknown No method

# Report on the main results of the surveillance under article 17 for annex I habitat types (Annex D)

## 2.4.13 Reason for change

Improved knowledge/more accurate data

## 2.5 Main Pressures

Pressure	ranking	pollution qualifier(s)
forestry clearance (B02.02)	high importance (H)	N/A
disposal of household / recreational facility waste (E03.01)	medium importance (M)	N/A
mountaineering, rock climbing, speleology (G01.04)	high importance (H)	N/A
other outdoor sports and leisure activities (G01.08)	high importance (H)	N/A
Pollution to surface waters (limnic & terrestrial, marine & brackish) (H01)	medium importance (M)	N/A
Air pollution, air-borne pollutants (H04)	low importance (L)	N/A
Soil pollution and solid waste (excluding discharges) (H05)	low importance (L)	N/A
Vandalism (G05.04)	medium importance (M)	N/A
Drying out (K01.03)	low importance (L)	N/A
Silting up (K01.02)	medium importance (M)	N/A

### 2.5.1 Method used – pressures

mainly based on expert judgement and other data (2)

## 2.6 Main Threats

Threat	ranking	pollution qualifier(s)
forestry clearance (B02.02)	high importance (H)	N/A
other outdoor sports and leisure activities (G01.08)	medium importance (M)	N/A
Pollution to surface waters (limnic & terrestrial, marine & brackish) (H01)	medium importance (M)	N/A
Air pollution, air-borne pollutants (H04)	low importance (L)	N/A
Vandalism (G05.04)	medium importance (M)	N/A

### 2.6.1 Method used – threats

expert opinion (1)

## 2.7 Complementary Information

### 2.7.1 Species

Rhinolophus hipposideros

Rhinolophus ferrumequinum

Rhinolophus euriale

Myotis myotis

Myotis blythi

Myotis daubentoni

Myotis bechsteini

Miniopterus schreibersi

Paladilhia hungarica

Duvalius spp.

Isopoda spp.

Amphipoda spp.

Ostracoda spp.

# Report on the main results of the surveillance under article 17 for annex I habitat types (Annex D)

Copepoda spp.

2.7.2 Species method used	Az NBmR közösségi jelentőségű fajokra (pl.: denevérfajok, bogarak, csigák) vonatkozó monitorozás eredményeinek összegzése és értékelése alapján.
2.7.3 Justification of % - thresholds for trends	
2.7.4 Structure and functions - methods used	Estimate based on partial data with some extrapolation and/or modelling (2)
2.7.5 Other relevant information	A 2.4.1 surface of area pont alatt km2 helyett, a barlangok hosszút tüntettük fel (km-ben), mivel a hossz jobban jellemzi a kiterjedést mint az alapterület.
<b>2.8 Conclusions (assessment of conservation status at end of reporting period)</b>	
2.8.1 Range	assessment Favourable (FV) qualifiers N/A
2.8.2 Area	assessment Favourable (FV) qualifiers N/A
2.8.3 Specific structures and functions (incl Species)	assessment Inadequate (U1) qualifiers stable (=)
2.8.4 Future prospects	assessment Inadequate (U1) qualifiers stable (=)
2.8.5 Overall assessment of Conservation Status	Inadequate (U1)
2.8.5 Overall trend in Conservation Status	stable (=)

## 3. Natura 2000 coverage conservation measures - Annex I habitat types on biogeographical level

### 3.1 Area covered by habitat

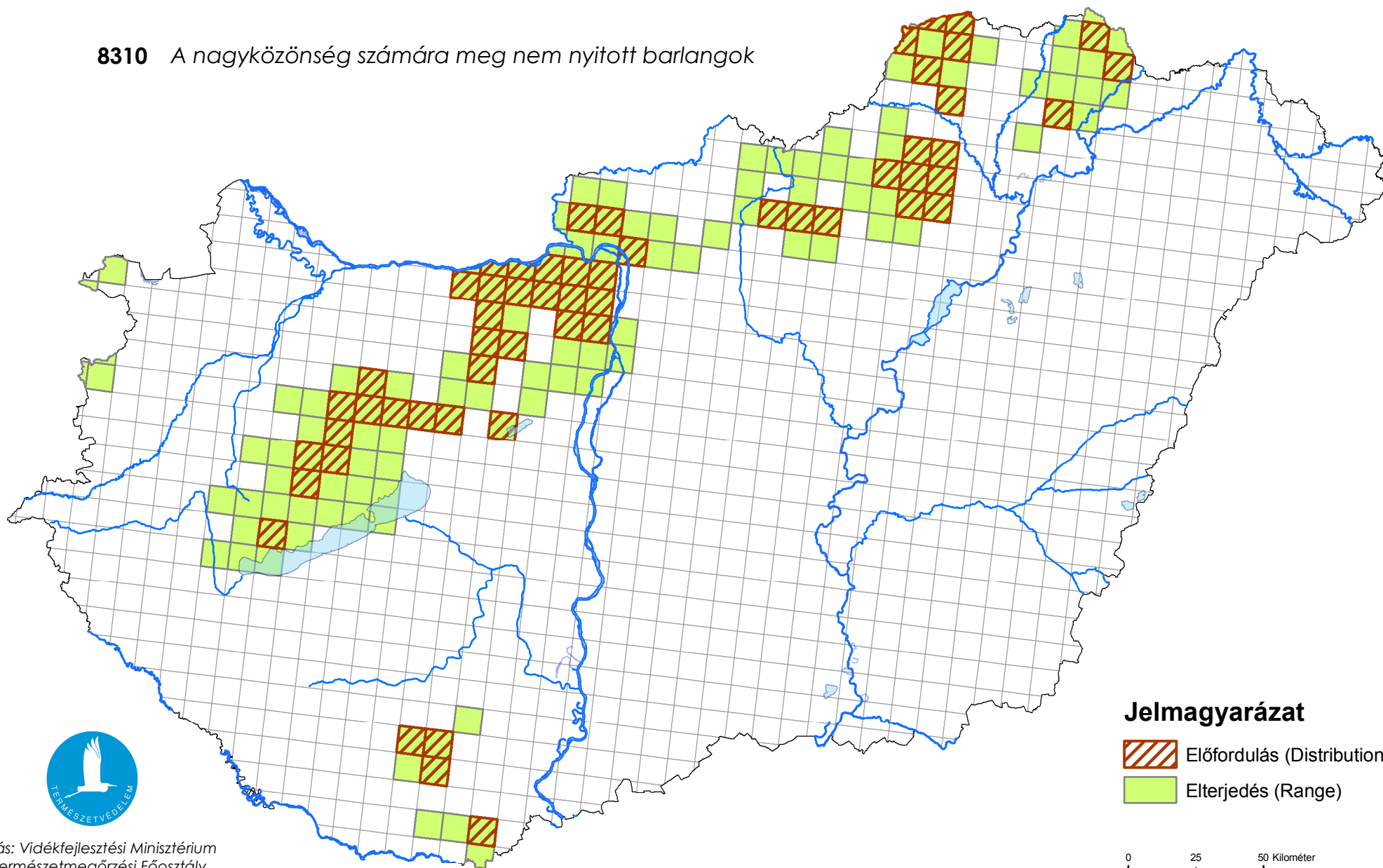
3.1.1 Surface area (km <sup>2</sup> )	min	160	max	160
3.1.2 Method used	Estimate based on partial data with some extrapolation and/or modelling (2)			
3.1.3. Trend of surface area	N/A			

### 3.2 Conversation Measures



3.2.1 Measure	3.2.2 Type	3.2.3 Ranking	3.2.4 Location	3.2.5 Broad Evaluation
Other species management measures (7.0)	Administrative Contractual Recurrent	high importance (H)	Both	Maintain Enhance Long term
Establish protected areas/sites (6.1)	Legal Recurrent	high importance (H)	Both	Long term

# Térképmelléklet az élőhelyvédelmi irányelv 17. cikke alapján készített országjelentéshez 2013.

**8310** A nagyközönség számára meg nem nyitott barlangok



## Jelmagyarázat

-  Előfordulás (Distribution)
-  Elterjedés (Range)

0 25 50 Kilométer

