

Report on the main results of the surveillance under article 17 for annex I habitat types (Annex D)

CODE: 9110

NAME: Luzulo-Fagetum beech forests

1. National Level

1.1 Maps

1.1.1 Distribution Map	Yes
1.1.2 Distribution Method	Estimate based on partial data with some extrapolation and/or modelling (2)
1.1.3 Year or period	2007-2012
1.1.4 Additional map	No
1.1.5 Range Map	Yes

2. Biogeographical Or Marine Level

2.1 Biogeographical Region

Pannonian (PAN)

2.2 Published

Böloni J., Molnár Zs. & Kun A (2011): Magyarország Élőhelyei Vegetációtípusok leírása és határozója ÁNÉR 2011: MTA Ökológiai és Botanikai Kutatóintézete, Vácrátót.

Kevey B. (2008): Magyarország erdőtársulásai (Forest associations of Hungary). – Tilia 14: 1-488.

A Nemzeti Biodiverzitás-monitorozó Rendszer keretében 2007-2012 között végzett felmérések kutatási jelentése

2.3 Range of the habitat type in the biogeographical region or marine region

2.3.1 Surface area - Range (km ²)	4400
2.3.2 Range method used	Estimate based on partial data with some extrapolation and/or modelling (2)
2.3.3 Short-term trend period	2001-2012
2.3.4 Short-term trend direction	stable (0)
2.3.5 Short-term trend magnitude	min max
2.3.6 Long-term trend period	
2.3.7 Long-term trend direction	N/A
2.3.8 Long-term trend magnitude	min max
2.3.9 Favourable reference range	area (km ²) operator approximately equal to (≈) unkown No method
2.3.10 Reason for change	Improved knowledge/more accurate data

2.4 Area covered by Habitat

2.4.1 Surface area (km ²)	11
2.4.2 Year or period	2007-2012
2.4.3 Method used	Estimate based on partial data with some extrapolation and/or modelling (2)
2.4.4 Short-term trend period	2001-2012
2.4.5 Short-term trend direction	stable (0)
2.4.6 Short-term trend magnitude	min max

Report on the main results of the surveillance under article 17 for annex I habitat types (Annex D)

2.4.7 Short term trend method used	Estimate based on partial data with some extrapolation and/or modelling (2)	
2.4.8 Long-term trend period		
2.4.9 Long-term trend direction	N/A	
2.4.10 Long-term trend magnitude	min	max
2.4.11 Long term trend method used	N/A	
2.4.12 Favourable reference area	area (km) operator unknown method	approximately equal to (\approx) No
2.4.13 Reason for change	Improved knowledge/more accurate data Use of different method	

2.5 Main Pressures

Pressure	ranking	pollution qualifier(s)
forest replanting (B02.01)	high importance (H)	N/A
forestry clearance (B02.02)	high importance (H)	N/A
damage caused by game (excess population density) (F03.01.01)	medium importance (M)	N/A
removal of dead and dying trees (B02.04)	medium importance (M)	N/A
Changes in biotic conditions (M02)	low importance (L)	N/A
Outdoor sports and leisure activities, recreational activities (G01)	low importance (L)	N/A

2.5.1 Method used – pressures mainly based on expert judgement and other data (2)

2.6 Main Threats

Threat	ranking	pollution qualifier(s)
forest replanting (B02.01)	high importance (H)	N/A
forestry clearance (B02.02)	high importance (H)	N/A
damage caused by game (excess population density) (F03.01.01)	medium importance (M)	N/A
removal of dead and dying trees (B02.04)	medium importance (M)	N/A
Changes in biotic conditions (M02)	low importance (L)	N/A
Outdoor sports and leisure activities, recreational activities (G01)	low importance (L)	N/A

2.6.1 Method used – threats expert opinion (1)

2.7 Complementary Information

2.7.1 Species

Fagus sylvatica

Sorbus aucuparia

Betula pendula

Deschampsia flexuosa

Vaccinium myrtillus

Leucobryum glaucum

Robinia pseudoacacia

Report on the main results of the surveillance under article 17 for annex I habitat types (Annex D)

2.7.2 Species method used

NBmR 5×5 km-es kvadrátok és N2000 területek élőhelytérképezése, az NBmR monitorozásra kiválasztott társulásainak cönológiai felvételezése, valamint a közösségi jelentőségű élőhelytípusok monitorozása eredményeinek összegzése és értékelése alapján.

2.7.3 Justification of % - thresholds for trends

2.7.4 Structure and functions - methods used

Estimate based on partial data with some extrapolation and/or modelling (2)

2.7.5 Other relevant information

A struktúra-funkció megítélése 5 komponensű (fajkészlet, fragmentáltság, inváziós fertőzöttség, termőhelyi sérülékenységi, kezelések sikeressége) szempontrendszer alapján történt.

2.8 Conclusions (assessment of conservation status at end of reporting period)

2.8.1 Range

assessment Favourable (FV)
qualifiers N/A

2.8.2 Area

assessment Favourable (FV)
qualifiers N/A

2.8.3 Specific structures and functions (incl Species)

assessment Favourable (FV)
qualifiers N/A

2.8.4 Future prospects

assessment Favourable (FV)
qualifiers N/A

2.8.5 Overall assessment of Conservation Status

Favourable (FV)

2.8.5 Overall trend in Conservation Status

N/A

3. Natura 2000 coverage conservation measures - Annex I habitat types on biogeographical level

3.1 Area covered by habitat

3.1.1 Surface area (km²)

min 10 max 10

3.1.2 Method used

Estimate based on partial data with some extrapolation and/or modelling (2)

3.1.3. Trend of surface area

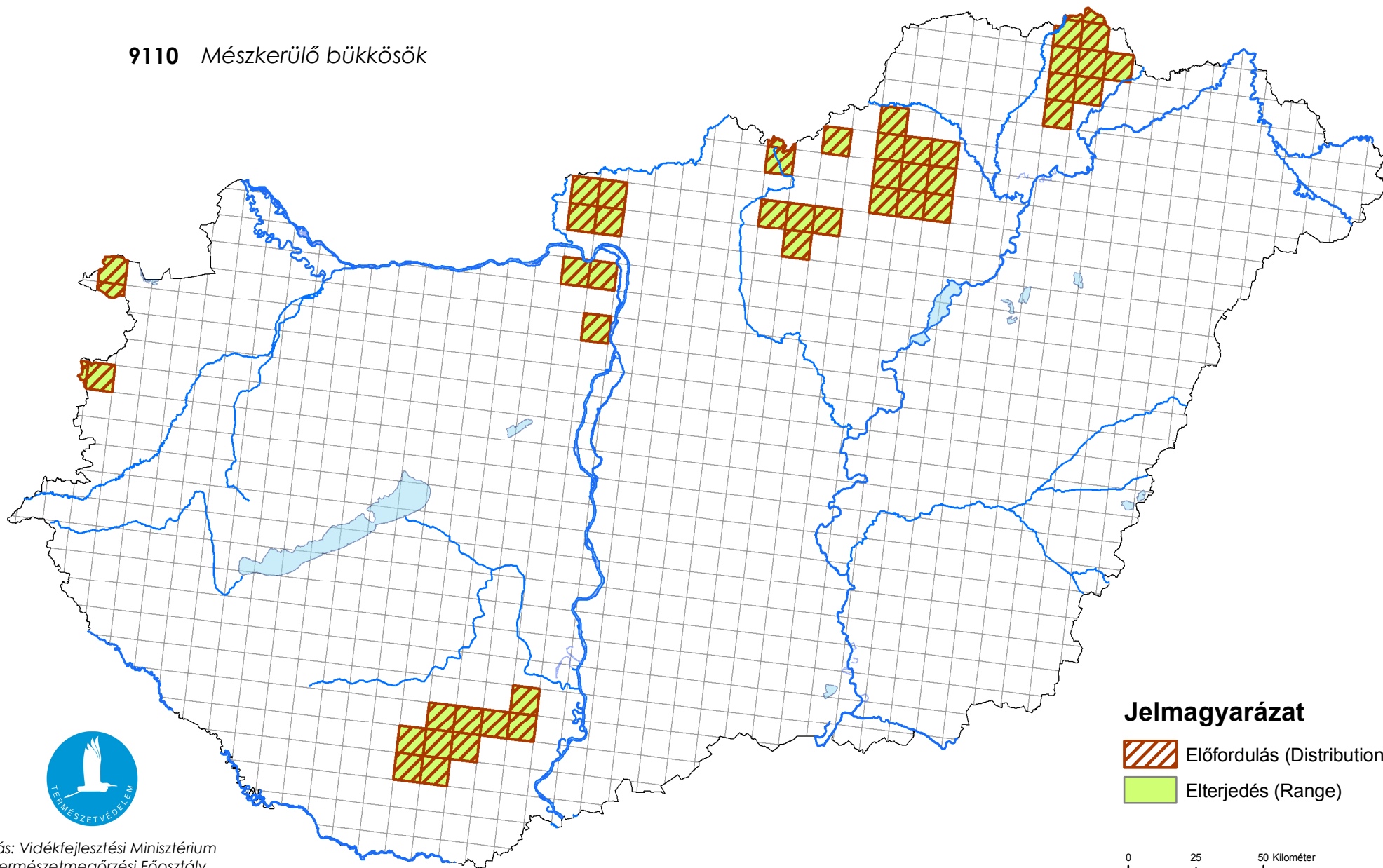
N/A

3.2 Conversation Measures


3.2.1 Measure	3.2.2 Type	3.2.3 Ranking	3.2.4 Location	3.2.5 Broad Evaluation
Other forestry-related measures (3.0)	Legal Administrative Recurrent	high importance (H)	Both	Maintain Enhance Long term
Restoring/improving forest habitats (3.1)	Administrative	high importance (H)	Inside	Maintain
Establish protected areas/sites (6.1)	Legal One-off	high importance (H)	Inside	Maintain Long term

Térképmelléklet az élőhelyvédelmi irányelv 17. cikke alapján készített országjelentéshez 2013.

9110 Mészkerülő bükkösök



Jelmagyarázat

 Előfordulás (Distribution)

 Elterjedés (Range)

0 25 50 Kilométer

