

Report on the main results of the surveillance under article 17 for annex I habitat types (Annex D)

CODE: 91K0

NAME: Illyrian Fagus sylvatica forests (Aremonio-Fagion)

1. National Level

1.1 Maps

1.1.1 Distribution Map	Yes
1.1.2 Distribution Method	Estimate based on partial data with some extrapolation and/or modelling (2)
1.1.3 Year or period	2007-2012
1.1.4 Additional map	No
1.1.5 Range Map	Yes

2. Biogeographical Or Marine Level

2.1 Biogeographical Region

Pannonian (PAN)

2.2 Published

Bölöni J., Molnár Zs. & Kun A (2011): Magyarország Élőhelyei Vegetációtípusok leírása és határozója ÁNÉR 2011: MTA Ökológiai és Botanikai Kutatóintézete, Vácrátót.

Kevey B. (2008): Magyarország erdőtársulásai (Forest associations of Hungary). – Tilia 14: 1-488.

A Nemzeti Biodiverzitás-monitorozó Rendszer keretében 2007-2012 között végzett felmérések kutatási jelentése

2.3 Range of the habitat type in the biogeographical region or marine region

2.3.1 Surface area - Range (km ²)	9211
2.3.2 Range method used	Estimate based on partial data with some extrapolation and/or modelling (2)
2.3.3 Short-term trend period	2001-2012
2.3.4 Short-term trend direction	stable (0)
2.3.5 Short-term trend magnitude	min max
2.3.6 Long-term trend period	
2.3.7 Long-term trend direction	N/A
2.3.8 Long-term trend magnitude	min max
2.3.9 Favourable reference range	area (km ²) operator approximately equal to (≈) unkown No method
2.3.10 Reason for change	Improved knowledge/more accurate data

2.4 Area covered by Habitat

2.4.1 Surface area (km ²)	270
2.4.2 Year or period	2007-2012
2.4.3 Method used	Estimate based on partial data with some extrapolation and/or modelling (2)
2.4.4 Short-term trend period	2001-2012
2.4.5 Short-term trend direction	stable (0)
2.4.6 Short-term trend magnitude	min max

Report on the main results of the surveillance under article 17 for annex I habitat types (Annex D)

2.4.7 Short term trend method used	Estimate based on partial data with some extrapolation and/or modelling (2)
2.4.8 Long-term trend period	
2.4.9 Long-term trend direction	N/A
2.4.10 Long-term trend magnitude	min max
2.4.11 Long term trend method used	N/A
2.4.12 Favourable reference area	area (km) operator more than (>) unknown No method
2.4.13 Reason for change	Improved knowledge/more accurate data

2.5 Main Pressures

Pressure	ranking	pollution qualifier(s)
forest replanting (B02.01)	high importance (H)	N/A
forestry clearance (B02.02)	high importance (H)	N/A
damage caused by game (excess population density) (F03.01.01)	medium importance (M)	N/A
removal of dead and dying trees (B02.04)	medium importance (M)	N/A
Changes in biotic conditions (M02)	medium importance (M)	N/A
problematic native species (I02)	low importance (L)	N/A
invasive non-native species (I01)	low importance (L)	N/A
Other human intrusions and disturbances (G05)	low importance (L)	N/A
Outdoor sports and leisure activities, recreational activities (G01)	low importance (L)	N/A

2.5.1 Method used – pressures mainly based on expert judgement and other data (2)

2.6 Main Threats

Threat	ranking	pollution qualifier(s)
forest replanting (B02.01)	high importance (H)	N/A
forestry clearance (B02.02)	high importance (H)	N/A
damage caused by game (excess population density) (F03.01.01)	medium importance (M)	N/A
removal of dead and dying trees (B02.04)	medium importance (M)	N/A
Changes in biotic conditions (M02)	medium importance (M)	N/A
invasive non-native species (I01)	low importance (L)	N/A
problematic native species (I02)	low importance (L)	N/A
Other human intrusions and disturbances (G05)	low importance (L)	N/A
Outdoor sports and leisure activities, recreational activities (G01)	low importance (L)	N/A

2.6.1 Method used – threats expert opinion (1)

2.7 Complementary Information

Report on the main results of the surveillance under article 17 for annex I habitat types (Annex D)

2.7.1 Species

Fagus sylvatica

Carpinus betulus

Fraxinus excelsior

Acer pseudoplatanus

Ulmus glabra

Tilia cordata

Tilia tomentosa

Daphne mezereum

Corylus avellana

Staphylea pinnata

Anemone spp.

Asarum europaeum

Galanthus nivalis

Carex sylvatica

Carex pilosa

Corydalis spp.

Scilla spp.

Gagea lutea

Galeobdolon luteum s.l.

Galium odoratum

Lathyrus vernus

Maianthemum bifolium

Milium effusum

Pteridopsida

Lunaria rediviva

Polygonatum multiflorum

Helleborus odorus

Lathyrus venetus

Vicia oroboides

Cyclamen purpurascens

Ruscus hypoglossum

Brachypodium sylvaticum

Calamagrostis epigeios

Dactylis spp.

Geum urbanum

Geranium robertianum

Galium aparine

Urtica dioica

Perietaria officinalis

Report on the main results of the surveillance under article 17 for annex I habitat types (Annex D)

Robinia pseudoacacia

Prunus serotina

Oxalis acetosella

2.7.2 Species method used

NBmR 5x5 km-es kvadrátok és N2000 területek élőhelytérképezése, az NBmR monitorozásra kiválasztott társulásainak cönológiai felvételezése, valamint a közösségi jelentőségű élőhelytípusok monitorozása eredményeinek összegzése és értékelése alapján.

2.7.3 Justification of % - thresholds for trends

2.7.4 Structure and functions - methods used

Estimate based on partial data with some extrapolation and/or modelling (2)

2.7.5 Other relevant information

A struktúra-funkció megítélése 5 komponensű (fajkészlet, fragmentáltság, inváziós fertőzöttség, termőhelyi sérülékenység, kezelések sikeressége) szempontrendszer alapján történt.

2.8 Conclusions (assessment of conservation status at end of reporting period)

2.8.1 Range

assessment Favourable (FV)
qualifiers N/A

2.8.2 Area

assessment Inadequate (U1)
qualifiers stable (=)

2.8.3 Specific structures and functions (incl Species)

assessment Favourable (FV)
qualifiers N/A

2.8.4 Future prospects

assessment Inadequate (U1)
qualifiers stable (=)

2.8.5 Overall assessment of Conservation Status

Inadequate (U1)

2.8.5 Overall trend in Conservation Status

stable (=)

3. Natura 2000 coverage conservation measures - Annex I habitat types on biogeographical level

3.1 Area covered by habitat

3.1.1 Surface area (km²)

min 205 max 236

3.1.2 Method used

Estimate based on partial data with some extrapolation and/or modelling (2)

3.1.3. Trend of surface area

N/A

3.2 Conversation Measures

3.2.1 Measure

3.2.2 Type

3.2.3 Ranking

3.2.4 Location

3.2.5 Broad Evaluation

Other forestry-related measures (3.0)

Legal
Administrative
One-off

high importance
(H)

Both

Maintain
Long term

Restoring/improving forest habitats (3.1)

Recurrent

high importance
(H)

Both

Maintain
Enhance

Adapt forest management (3.2)

Recurrent

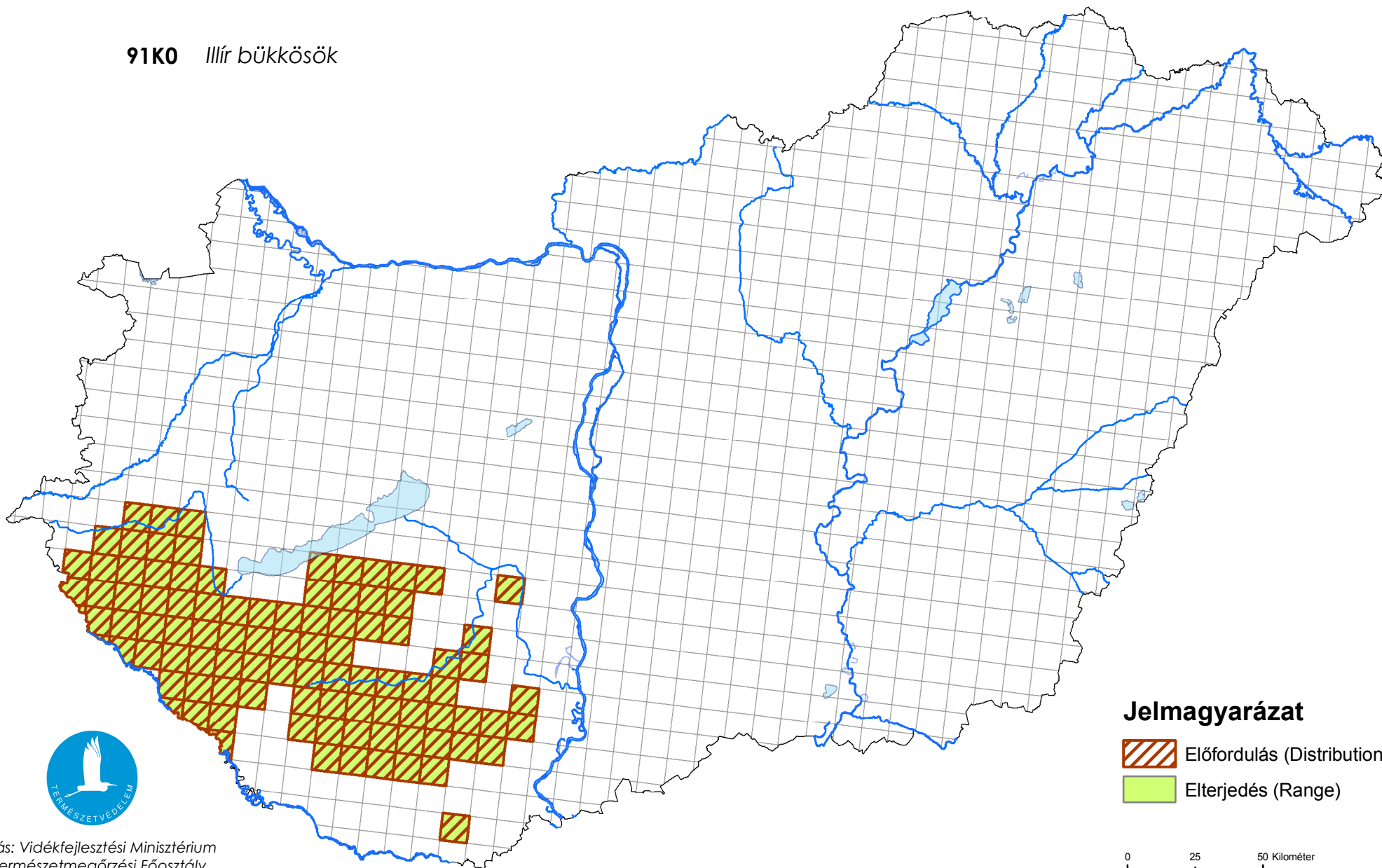
high importance
(H)

Inside

Maintain
Enhance
Long term

Térképmelléklet az élőhelyvédelmi irányelv 17. cikke alapján készített országjelentéshez 2013.

91K0 Illír bükkösök



Forrás: Vidékfejlesztési Minisztérium
Természetmegőrzési Főosztály