

speciesname *Lycaena dispar* fajnév **nagy tűzlepke**
 melléklet **II** speciescode **1060**

2.2 Published sources and/or websites

BARANYI, T., KOROMPAI, T., JÓZSA, Á. CS., BERTALAN, L. (2005): Adatok a Tiszántúl és a Tisza-mente Lepidoptera-faunájának ismeretéhez (Lepidoptera). A Puszta 2004. A „Nimfea” Természetvédelmi Egyesület évkönyve, Szarvas, 2005. 21: 21-133.
 BÁLINT ZSOLT – GUBÁNYI ANDRÁS – PITTER GÁBOR (2006): Magyarország védett pillangóalakú lepkéinek katalógusa – Magyar Természettudományi Múzeum, Budapest, 136 p.
 BÁLINT ZSOLT (1992): Kárpát-medencei nappali lepke-jegyzetek. (Lepidoptera: Rhopalocera) - Folia Entomologica Hungarica 52: 21-222.

Range

2.3.1 Surface range of the species in km2 31200
 2.3.2 Date of range determination 2006
 2.3.3 Quality of data concerning range Moderate e.g. based on partial data with som
 2.3.4 Range trend Decreasing (-)
 2.3.5 Range trend magnitude in km2 (optional)
 2.3.6 Range trend period 1930-2006

2.3.7 range-reasons

Climate change
Indirect anthropo(zoo)genic influence
Natural processes

and/or specify

Population

2.4.1 Population size estimation (minimum) 9100
 2.4.1 Population size estimation (maximum) 55000
 2.4.1 Population units Number of individuals
 2.4.2 Date of population estimation 2006
 2.4.3 Population-methods Extrapolation from surveys of part of the population or from sampling
 2.4.4 Quality of population data Moderate e.g. based o
 2.4.5 Population trend Unknown (X)
 2.4.6 Population trend magnitude (km2)
 2.4.7 Population trend period 2000-2006

2.4.8 Population-reasons

Unknown

and/or specify

2.4.10 Population-pressures

100 Cultivation
330 Mines
390 Mining and extraction activities not referred to above
400 Urbanised areas, human habitation
500 Communication networks
800 Landfill, land reclamation and drying out, general
920 Drying out

2.4.11 Population-threats

102 - mowing / cutting
180 Burning
331 - open cast mining
401 - continuous urbanisation
502 - roads, motorways
803 - infilling of ditches, dykes, ponds, pools, marshes or pits
811 - management of aquatic and bank vegetation for drainage purposes
830 Canalisation
840 Flooding
852 - modifying structures of inland water courses
853 - management of water levels

speciesname	<i>Lycaena dispar</i>	fajnév	nagy tűzlepke
melléklet	II	speciescode	1060

920 Drying out

Habitat

2.5.1 Habitats for the species

Rumex fajokban gazdag nedves élőhelyek: mocsarak, lápok, vízpart

2.5.2 Area estimation (km2)

0

2.5.3 Date of estimation

2006

2.5.4 Quality of the data

Poor e.g. based on very incomplete data

2.5.5 Trend of the habitat

Unknown (X)

2.5.6 Trend period

2000-2006

2.5.7 Habitat-reasons

Unknown

Other (specify)

Reference values

2.6 Future prospects for the species

Unknown

2.7.1 Favourable reference range (km2)

31200

Qualifier

2.7.2 Favourable reference population

55000

Qualifier

More than

2.7.3 Suitable habitat for the species

0

2.7.4 Other relevant information (optional)

Conclusions

Conclusions: (2.3) Range

Inadequate and deteriorating (U1-)

Conclusions: (2.4) Population

Inadequate (U1)

Conclusions: (2.5) Habitat for the species

Inadequate (U1)

Conclusions: (2.6) Future prospects

Unknown (XX)

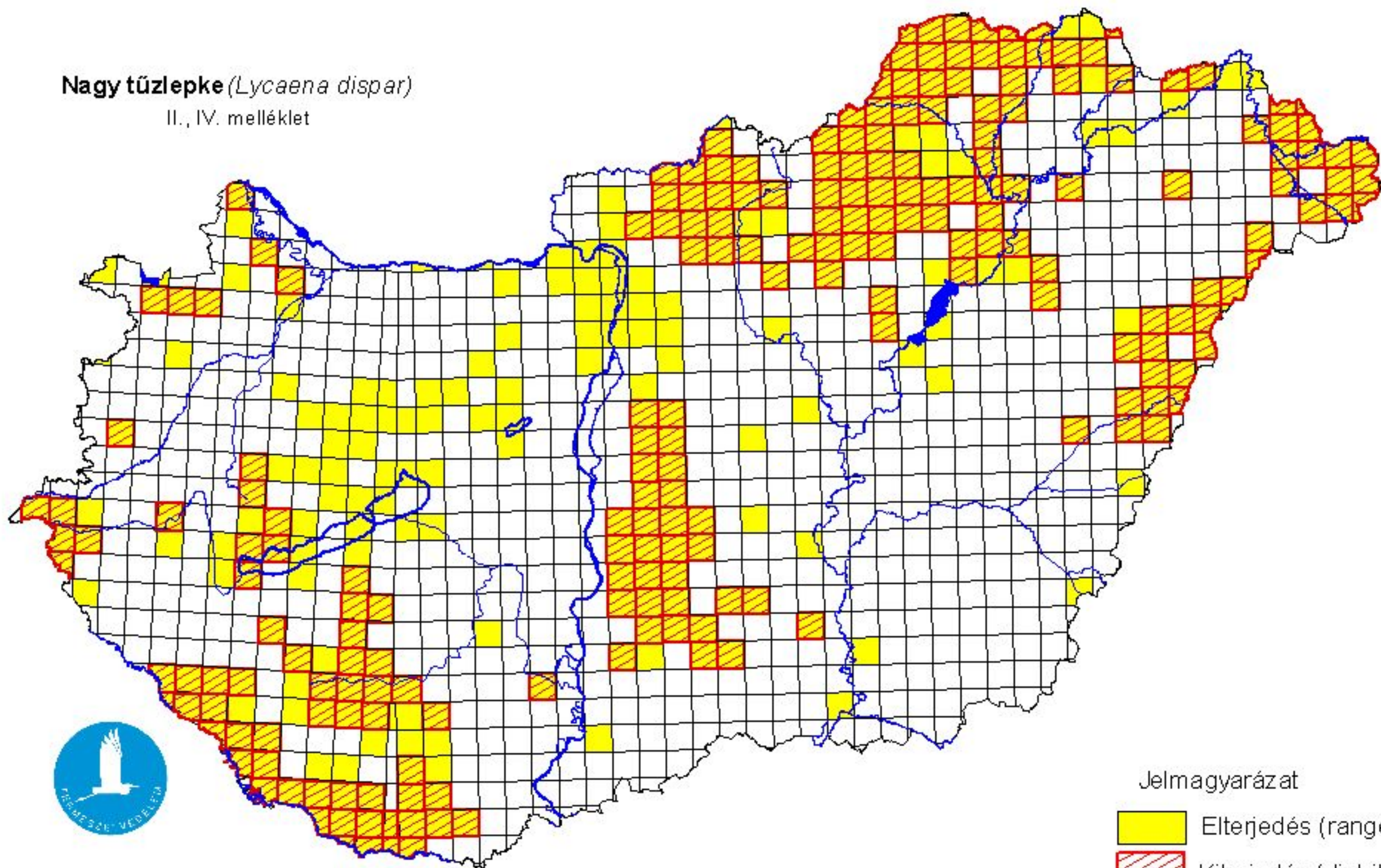
Conclusions: Overall assessment

Inadequate (U1)



Térképmelléklet az élőhelyvédelmi irányelv 17. cikke alapján készített országjelentéshez 2007.

Nagy tűzlepke (*Lycaena dispar*)

II., IV. melléklet



Jelmagyarázat

-  Elterjedés (range)
-  Kiterjedés (distribution)

