

speciesname *Nyctalus noctula* fajnév **Koraidenevér**
 melléklet **IV** speciescode **1312**

2.2 Published sources and/or websites

Bihari, Z., Heltai, M. és Csorba, G. (eds) Magyarország emlőseinek atlasza. Kossuth Kiadó, Budapest (in print)
 Bihari, Z. 2000. Examination of bats straying into rooms. Myotis, 37: 99-102.
 Bihari, Z. 2004. The roost preference of Nyctalus noctula (Chiroptera, Vespertilionidae) in summer and the ecological background of its urbanization. Mammalia, 68/4: 329-336.
 Fehér, Cs. E. 1996. Korai denevér (Nyctalus noctula) szokatlanul nagyarányú előfordulása gyöngybagoly (Tyto alba) köpeteiben. Denevérkutatás, 2: 41-42.
 Murai, É. 1976. Cestodes of Bats in Hungary. Parasit. Hung., 9: 41-62.

Range

2.3.1 Surface range of the species in km2 93011
 2.3.2 Date of range determination 2006
 2.3.3 Quality of data concerning range Poor e.g. based on very incomplete data or o
 2.3.4 Range trend Stable (=)
 2.3.5 Range trend magnitude in km2 (optional)
 2.3.6 Range trend period 1996-2006
 2.3.7 range-reasons

Natural processes

and/or specify

Population

2.4.1 Population size estimation (minimum) 100000
 2.4.1 Population size estimation (maximum) 400000
 2.4.1 Population units Number of individuals
 2.4.2 Date of population estimation 2006
 2.4.3 Population-methods

Based on expert opinion

 2.4.4 Quality of population data Poor e.g. based on ver
 2.4.5 Population trend Stable (=)
 2.4.6 Population trend magnitude (km2)
 2.4.7 Population trend period 1996-2006
 2.4.8 Population-reasons

Indirect anthropo(zoo)genic influence
Natural processes

and/or specify

2.4.10 Population-pressures

160 General Forestry management
164 - forestry clearance
166 - removal of dead and dying trees
740 Vandalism
800 Landfill, land reclamation and drying out, general
803 - infilling of ditches, dykes, ponds, pools, marshes or pits
810 Drainage

2.4.11 Population-threats

160 General Forestry management
164 - forestry clearance
166 - removal of dead and dying trees
740 Vandalism
800 Landfill, land reclamation and drying out, general
803 - infilling of ditches, dykes, ponds, pools, marshes or pits
810 Drainage

Habitat

2.5.1 Habitats for the species

speciesname	<i>Nyctalus noctula</i>	fajnév	Koraidenevér
melléklet	IV	speciescode	1312

2.5.2 Area estimation (km2)	20271
2.5.3 Date of estimation	2006
2.5.4 Quality of the data	Poor e.g. based on very incomplete data
2.5.5 Trend of the habitat	Stable (=)
2.5.6 Trend period	1996-2006
2.5.7 Habitat-reasons	Indirect anthropo(zoo)genic influence
Other (specify)	Natural processes

Reference values

2.6 Future prospects for the species	Good prospects - species expected to sur
2.7.1 Favourable reference range (km2)	93011
Qualifier	
2.7.2 Favourable reference population	400000
Qualifier	
2.7.3 Suitable habitat for the species	20271
2.7.4 Other relevant information (optional)	

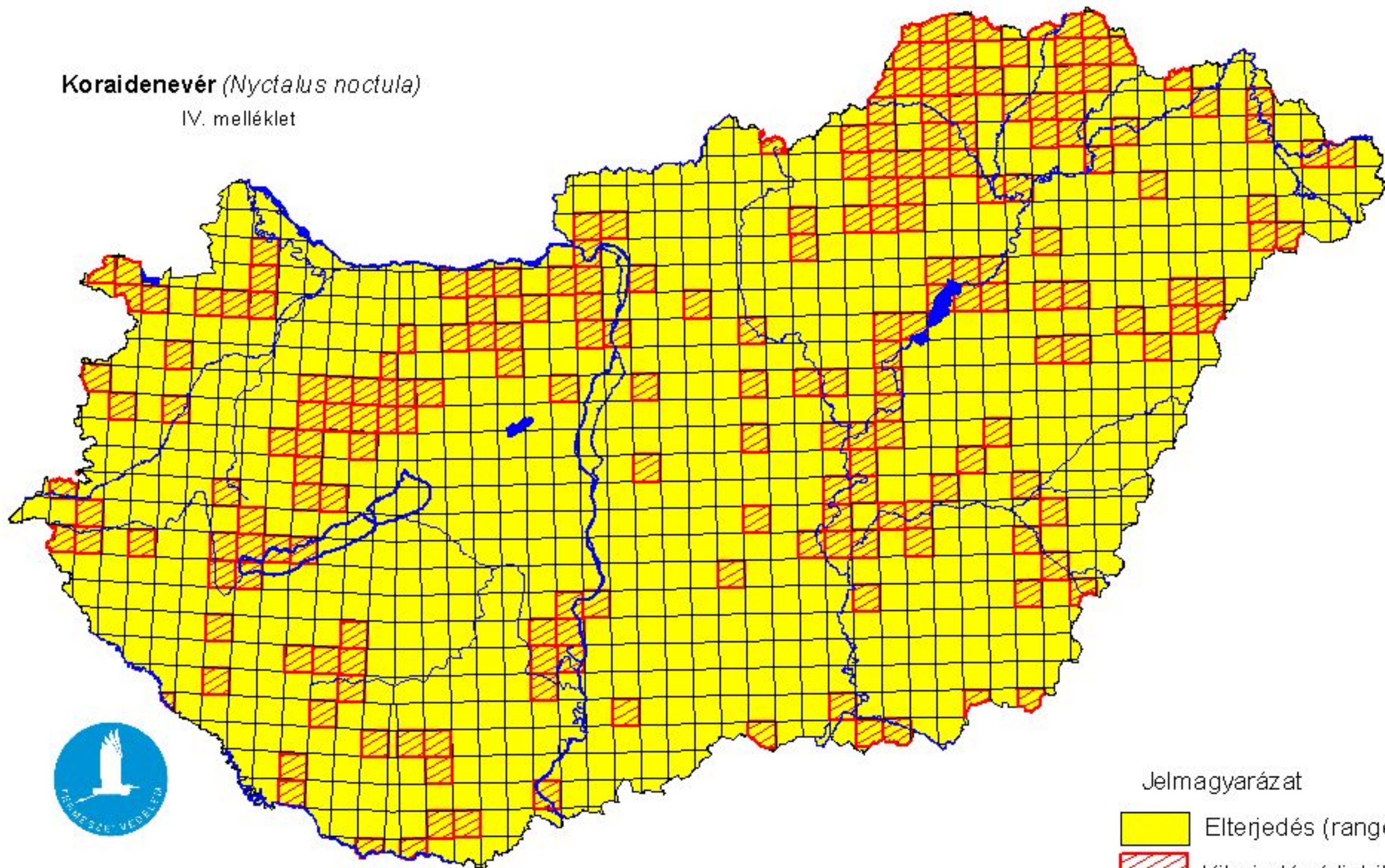
Conclusions

Conclusions: (2.3) Range	Favourable (FV)
Conclusions: (2.4) Population	Favourable (FV)
Conclusions: (2.5) Habitat for the species	Favourable (FV)
Conclusions: (2.6) Future prospects	Favourable (FV)
Conclusions: Overall assessment	Favourable (FV)



Térképmelléklet az élőhelyvédelmi irányelv 17. cikke alapján készített országjelentéshez
2007.

Koraidenevér (*Nyctalus noctula*)

IV. melléklet



Jelmagyarázat

-  Elterjedés (range)
-  Kiterjedés (distribution)

