

|             |                                  |             |                     |
|-------------|----------------------------------|-------------|---------------------|
| speciesname | <i>Pipistrellus pipistrellus</i> | fajnév      | <b>Törpedenevér</b> |
| melléklet   | <b>IV</b>                        | speciescode | <b>1309</b>         |

## 2.2 Published sources and/or websites

Bihari, Z., Heltai, M. és Csorba, G. (eds) Magyarország emlőseinek atlasza. Kossuth Kiadó, Budapest (in print)  
 Bihari, Z. 2000. Examination of bats straying into rooms. Myotis, 37: 99-102.  
 Bihari, Z. 1990. Törpe denevér (*Pipistrellus pipistrellus*) a debreceni Nagyerdőn. Calandrella IV/2: 45.  
 Gombkötő, P. 1995. Épületfoglaló törpedenevérek (*Pipistrellus pipistrellus*). Denevérkutatás, 1: 25-26.  
 Szatyor, M. 2000. Európa denevérei. Pannon Könyvek. Pro Pannónia Kiadói Alapítvány, Pécs: 5-142.

## Range

|   |  |
|---|--|
| 2.3.1 Surface range of the species in km2     | 93011  |
| 2.3.2 Date of range determination             | 2006   |
| 2.3.3 Quality of data concerning range        | Poor e.g. based on very incomplete data or o |
| 2.3.4 Range trend                             | Stable (=)                                   |
| 2.3.5 Range trend magnitude in km2 (optional) |  |
| 2.3.6 Range trend period                      | 1996-2006                                    |
| 2.3.7 range-reasons                           | Natural processes                            |

and/or specify

## Population

|  |                                       |
|--|---------------------------------------|
| 2.4.1 Population size estimation (minimum) | 50000                                 |
| 2.4.1 Population size estimation (maximum) | 150000                                |
| 2.4.1 Population units                     | Number of individuals                 |
| 2.4.2 Date of population estimation        | 2006                                  |
| 2.4.3 Population-methods                   | Based on expert opinion               |
| 2.4.4 Quality of population data           | Poor e.g. based on ver                |
| 2.4.5 Population trend                     | Stable (=)                            |
| 2.4.6 Population trend magnitude (km2)     |                                       |
| 2.4.7 Population trend period              | 1996-2006                             |
| 2.4.8 Population-reasons                   | Natural processes                     |
| and/or specify                             |                                       |
| 2.4.10 Population-pressures                | 160 General Forestry management       |
|  | 164 - forestry clearance              |
|  | 166 - removal of dead and dying trees |
|  | 740 Vandalism                         |
| 2.4.11 Population-threats                  | 160 General Forestry management       |
|  | 164 - forestry clearance              |
|  | 166 - removal of dead and dying trees |
|  | 740 Vandalism                         |

## Habitat

|                                |   |
|--------------------------------|---|
| 2.5.1 Habitats for the species |   |
| 2.5.2 Area estimation (km2)    | 10578,9                                 |
| 2.5.3 Date of estimation       | 2006                                    |
| 2.5.4 Quality of the data      | Poor e.g. based on very incomplete data |
| 2.5.5 Trend of the habitat     | Stable (=)                              |
| 2.5.6 Trend period             | 1996-2006                               |
| 2.5.7 Habitat-reasons          | Natural processes                       |
| Other (specify)                |   |

## Reference values

|             |                                  |             |                     |
|-------------|----------------------------------|-------------|---------------------|
| speciesname | <i>Pipistrellus pipistrellus</i> | fajnév      | <b>Törpedenevér</b> |
| melléklet   | <b>IV</b>                        | speciescode | <b>1309</b>         |

---

|  |  |
|--|--|
| <i>2.6 Future prospects for the species</i>        | Good prospects - species expected to sur |
| <i>2.7.1 Favourable reference range (km2)</i>      | 93011                                    |
| <i>Qualifier</i>                                   |  |
| <i>2.7.2 Favourable reference population</i>       | 150000                                   |
| <i>Qualifier</i>                                   |  |
| <i>2.7.3 Suitable habitat for the species</i>      | 10578,9                                  |
| <i>2.7.4 Other relevant information (optional)</i> |  |

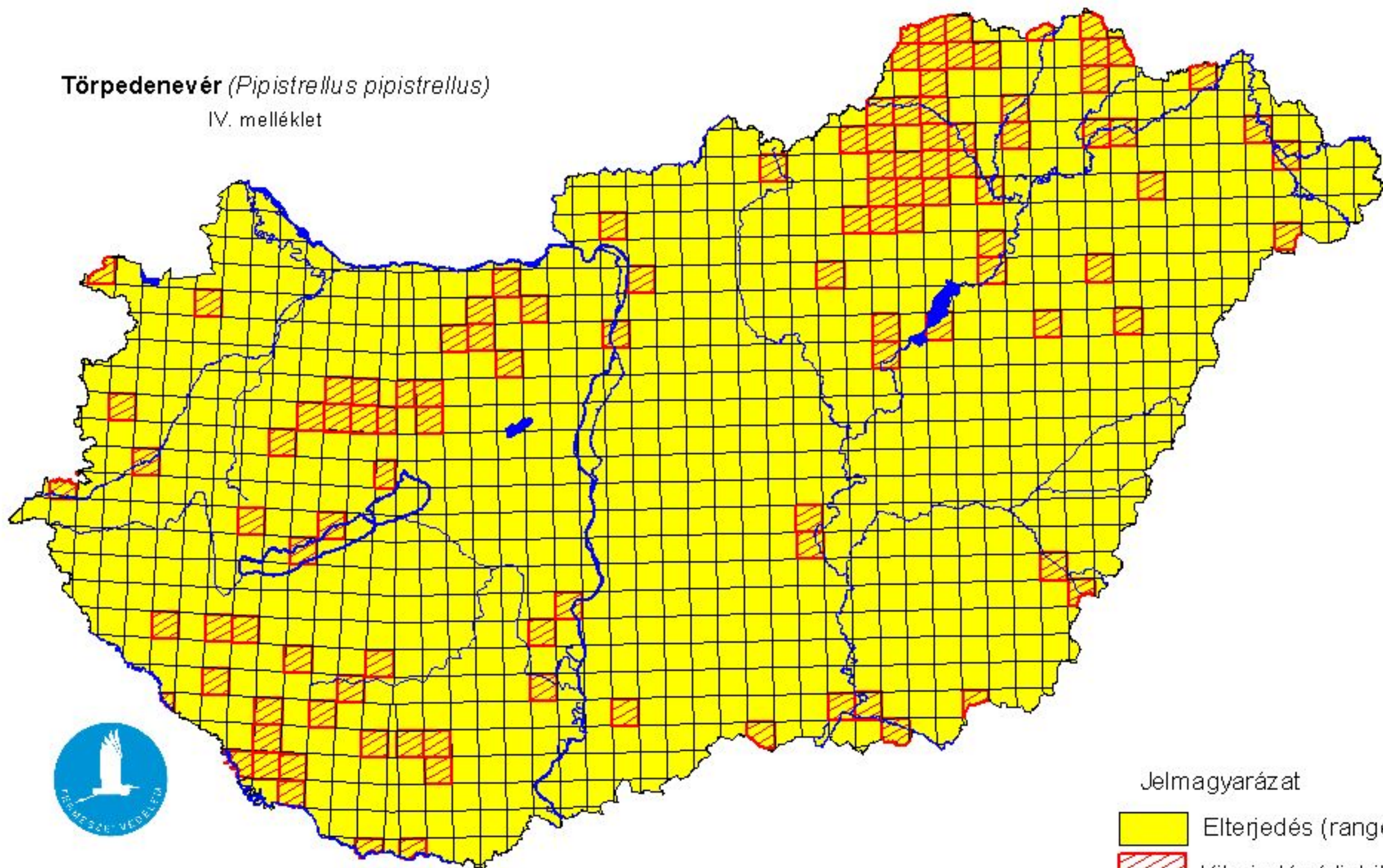
### **Conclusions**

|   |                 |
|---|-----------------|
| <i>Conclusions: (2.3) Range</i>                   | Favourable (FV) |
| <i>Conclusions: (2.4) Population</i>              | Favourable (FV) |
| <i>Conclusions: (2.5) Habitat for the species</i> | Favourable (FV) |
| <i>Conclusions: (2.6) Future prospects</i>        | Favourable (FV) |
| <i>Conclusions: Overall assessment</i>            | Favourable (FV) |



Térképmelléklet az élőhelyvédelmi irányelv 17. cikke alapján készített országjelentéshez  
2007.

**Törpedenevér** (*Pipistrellus pipistrellus*)

IV. melléklet



Jelmagyarázat

-  Elterjedés (range)
-  Kiterjedés (distribution)

