

Annex B - Bird Species' status and trends report (Article 12)

1. Species information

1.1 Member State	Hungary
1.2 Species code	A179
1.3 EURING code	5820
1.4 Species scientific name	Larus ridibundus
1.5 Subspecific population	
1.6 Alternative species scientific name	
1.7 Common name	dankasirály
1.8 Season	Breeding (B)

2. Population size

2.1 Year or period	2015-2017
2.2 Population size	a) Unit number of pairs (p) b) Minimum 4000 c) Maximum 6400 d) Best single value
2.3 Type of estimate	Best estimate
2.4 Population size Method used	Complete survey or a statistically robust estimate
2.5 Sources	National park directorates' databases (Annual survey of colonially breeding and strictly protected bird species)
2.6 Change and reason for change (since previous report)	Genuine change Improved knowledge/more accurate data The change is mainly due to: Improved knowledge/more accurate data
2.7 Additional information	The national park directorates surveyed 3949 pairs in 2017 and 6394 pairs in 2015.

3. Population trend

3.1 Short-term trend (last 12 years)

3.1.1 Short-term trend Period	2007-2018
3.1.2 Short-term trend Direction	Fluctuating (F)
3.1.3 Short-term trend Magnitude	a) Minimum b) Maximum c) Best single value
3.1.4 Short-term trend Method used	Based mainly on extrapolation from a limited amount of data
3.1.5 Sources	National park directorates' databases (Annual survey of colonially breeding and strictly protected bird species) http://map.mme.hu/maps/map2

3.2 Long-term trend (since c. 1980)

3.2.1 Long-term trend Period	1980-2018
3.2.2 Long-term trend Direction	Decreasing (-)
3.2.3 Long-term trend Magnitude	a) Minimum 57

Annex B - Bird Species' status and trends report (Article 12)

b) Maximum 74

c) Best single value

3.2.4 Long-term Trend Method used

Based mainly on expert opinion with very limited data

3.2.5 Sources

Haraszthy, L. (szerk.) (1984): Magyarország fészkelő madarai. p. 246.
Haraszthy, L. (szerk.) (1998): Magyarország madarai. Mezőgazda Kiadó, Budapest. 441 p.

National park directorates' databases (Annual survey of colonially breeding and strictly protected bird species)

<http://map.mme.hu/maps/map2>

3.3 Additional information

The long-term trend is based on Haraszthy (1984), where the population was estimated at 15 000 pairs.

4. Breeding distribution map and size

4.1 Sensitive species

No

4.2 Year or period

2014-2018

4.3 Breeding distribution map

Yes

4.4 Breeding distribution surface area

6703

4.5 Breeding distribution Method used

Complete survey or a statistically robust estimate

4.6 Additional maps

No

4.7 Sources

National park directorates' databases (Annual survey of colonially breeding and strictly protected bird species)
<http://map.mme.hu/maps/map2>

4.8 Additional information

5. Breeding range trend

5.1 Short-term trend (last 12 years)

5.1.1 Short-term trend Period

2000-2018

5.1.2 Short-term trend Direction

Decreasing (-)

5.1.3 Short-term trend Magnitude

a) Minimum

b) Maximum

c) Best single value 27

5.1.4 Short-term trend Method used

Based mainly on extrapolation from a limited amount of data

5.1.5 Sources

National park directorates' databases (Annual survey of colonially breeding and strictly protected bird species)

<http://map.mme.hu/maps/map2>

http://www.termeszetvedelem.hu/_user/browser/File/Natura2000/BD_12_jelentes_2013_anyagai/Larus_ridibundus.pdf

5.2 Long-term trend (since c. 1980)

5.2.1 Long-term trend Period

1979-2018

5.2.2 Long-term trend Direction

Fluctuating (F)

5.2.3 Long-term trend Magnitude

a) Minimum

b) Maximum

c) Best single value

5.2.4 Long-term trend Method used

Based mainly on extrapolation from a limited amount of data

2020. május 22.

Annex B - Bird Species' status and trends report (Article 12)

5.2.5 Sources

Haraszthy, L. (szerk.) (1998): Magyarország madarai. Mezőgazda Kiadó, Budapest. 441 p.

National park directorates' databases (Annual survey of colonially breeding and strictly protected bird species)

<http://map.mme.hu/maps/map2>

5.3 Additional information

Haraszthy (1998) shows 54 grids for 1979-1986, the 2013 BD Article 12 report shows 92 grids for 2000-2012, while the <http://map.mme.hu/maps/map2> database (with the national park directorates' databases) in the present report shows 67 grids.

6. Progress in work related to international Species Action Plans (SAPs), Management Plans (MPs) and Brief Management Statements (BMSs)

6.0 Is/Will the information related to international SAPs, MPs and BMSs (section 6) be provided for the other season for this species?

No

6.1 Type of international plan

No plan (NA)

6.2 Has a national plan linked to the international SAP/MP/BMS been adopted?

No

6.3 If 'NO', describe any measures and initiatives taken related to the international SAP/MP/BMS

6.4 Assessment of the effectiveness of SAPs for globally threatened species (Art. 12, Species Action Plans)

()

6.5 Assessment of the effectiveness of MPs for huntable species in non-Secure status (Articles 3 and 7, Management Plans)

()

6.6 Sources of further Information

7. Main pressures and threats

Annex B - Bird Species' status and trends report (Article 12)

7.2 Sources of information

7.3 Additional information

8. Main Conservation Measures

8.1 Status of measures

8.2 Main purpose of the measures taken

8.3 Location of the measures

8.4 Response to the measures

8.6 Additional information

9. Natura 2000 (SPAs) coverage

9.1 Population size inside the Natura 2000 (SPA) network

a) Unit number of pairs (p)
b) Minimum
c) Maximum
d) Best single value

9.2 Type of estimate

9.3 Population size inside the network
Method used

9.4 Short-term trend of population size within the network
Direction

9.5 Short-term trend of population size within the network
Method used

9.6 Additional information

10. Information related to Annex II species (Art.7)

10.0 Is/Will the information related to Annex II species (section 10) be provided for the other season for this species?

No

10.1 Is the species nationally hunted?

No

Annex B - Bird Species' status and trends report (Article 12)

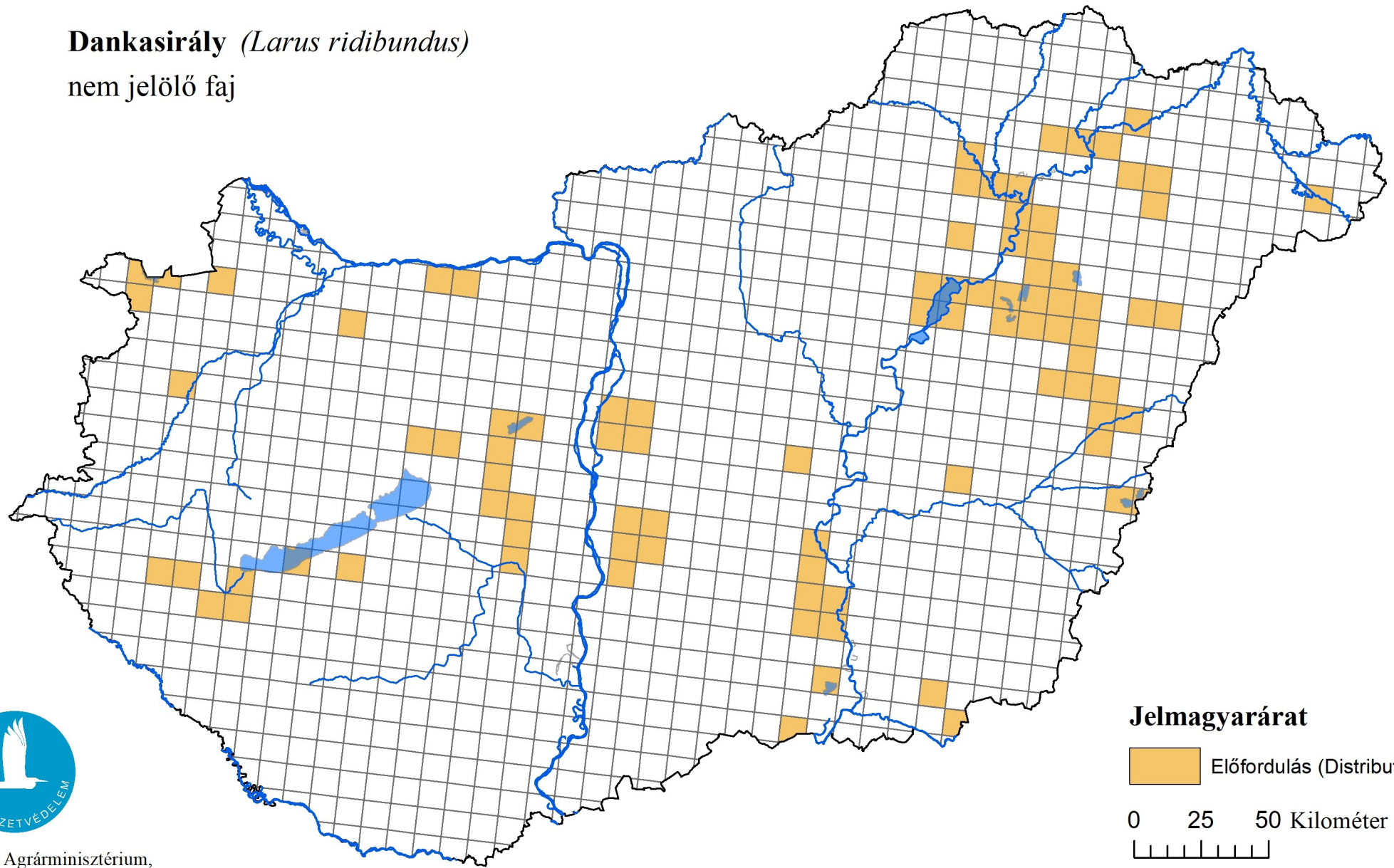
10.2 Hunting bag	a) Unit
	b) Statistics/ quantity taken
	Min. <i>(raw, i.e. not rounded)</i>
	Max. <i>(raw, i.e. not rounded)</i>
	Unknown
10.3 Hunting bagMethod used	
10.4 Additional information	

number of individuals (i)


<i>Provide statistics per hunting season or per year (where season is not used) over the reporting period.</i>					
<i>Season/ Year 1</i>	<i>Season/ Year 2</i>	<i>Season/ Year 3</i>	<i>Season/ Year 4</i>	<i>Season/ Year 5</i>	<i>Season/ Year 6</i>
No	No	No	No	No	No

A madárvédelmi irányelv 12. cikke alapján készített országjelentés 2019.

Dankasirály (*Larus ridibundus*)
nem jelölő faj



Jelmagyarárat

 Előfordulás (Distribution)

0 25 50 Kilométer

