

Bird species' status and trends reporting format for the period 2008-2012 (Annex 2)

1. Species Information

| | |
|-------------------------------|--------------------|
| 1.1 Member State | Hungary |
| 1.2.2 Natura 2000 code | A334 |
| 1.3 Species name | Certhia familiaris |
| 1.3.1 Sub-specific population | |
| 1.4 Alternative species name | |
| 1.5 Common name | hegyi fakusz |
| 1.6 Season | Breeding (B) |

2. Population size

| | |
|----------------------|--|
| 2.1 Year or period | 2000-2012 |
| 2.2 Population size | a)unit number of pairs (p) b)minimum 5000 c)maximum 23000 |
| 2.3 Type of estimate | Estimate derived from sample survey (95% CI range) |
| 2.4 Method used | Estimate based on partial data with some extrapolation and/or modelling (2) |
| 2.5 Quality | Moderate (2) |
| 2.6 Sources | National common bird monitoring scheme (MMM) database. Szép, T., Nagy, K., Nagy, Zs. & Halmos, G. (2012): Population trends of common breeding and wintering birds in Hungary, decline of long-distance migrant and farmland birds during 1999-2012. <i>Ornis Hungarica</i> 2012. 20(2): 13-63. |

2.8 Additional information

MMM 2000-2012 breeding season counts, evaluated by average value of the surveyed years on 100 m radius.

3. Population trend

3.1 Short-term trend (last 12 years)

| | |
|-----------------------|------------------|
| 3.1.1 Period | 2000-2012 |
| 3.1.2 Trend direction | Unknown (x) |
| 3.1.3 Magnitude | a)Min b)Max |
| 3.1.4 Method used | Absent data (0) |
| 3.1.5 Quality | Poor (1) |
| 3.1.6 Sources | |

3.2 Long-term trend (since c. 1980)

| | |
|----------------------------|------------------|
| 3.2.1 Period | 1980-2012 |
| 3.2.2 Trend direction | Unknown (x) |
| 3.2.3 Magnitude | a)Min b)Max |
| 3.2.4 Method used | Absent data (0) |
| 3.2.5 Quality | Poor (1) |
| 3.2.6 Sources | |
| 3.3 Additional information | |

4. Breeding distribution map and range size

Bird species' status and trends reporting format for the period 2008-2012 (Annex 2)

| | |
|---------------------------------|---|
| 4.1 Year or period | 2000-2012 |
| 4.2 Sensitive species | No |
| 4.3 Distribution map | Yes |
| 4.4 Additional distribution map | No |
| 4.5 Range map | Yes |
| 4.6 Range surface area | 20812 |
| 4.7 Method used | Estimate based on partial data with some extrapolation and/or modelling (2) |
| 4.8 Quality | Moderate (2) |
| 4.9 Sources | National common bird monitoring scheme (MMM) database. |
| 4.11 Additional information | The distribution and range maps were created on the basis of concrete distribution records as well as data on habitat occurrence. |

5. Breeding range trend

5.1 Short-term trend (last 12 years)

| | |
|-----------------------|--|
| 5.1.1 Period | 2000-2012 |
| 5.1.2 Trend direction | Stable (0) |
| 5.1.3 Magnitude | a)Min b)Max |
| 5.1.4 Method used | Estimate based on expert opinion with no or minimal sampling (1) |
| 5.1.5 Quality | Poor (1) |
| 5.1.6 Sources | Consultation with national experts. |

5.2 Long-term trend (since c. 1980)

| | |
|----------------------------|----------------------------------|
| 5.2.1 Period | 1980-2012 |
| 5.2.2 Trend direction | Unknown (x) |
| 5.2.3 Magnitude | a)Min b)Max |
| 5.2.4 Method used | Absent data (0) |
| 5.2.5 Quality | Poor (1) |
| 5.2.6 Sources | |
| 5.3 Additional information | |

6. Progress in work related to international Species Action Plans (SAPs), Management Plans (MPs) and Brief Management Statements (BMSs)

| | |
|-----------------------------------|--------------|
| 6.1 Type of plan | No Plan (NA) |
| 6.2 National plan adopted? | N/A |
| 6.3 Measures linked to SAP/MP/BMS | |
| 6.4 Further Information | |

Bird species' status and trends reporting format for the period 2008-2012 (Annex 2)

7. Main pressures and threats

8. SPA coverage and conservation measures

8.1 Population inside the SPA network

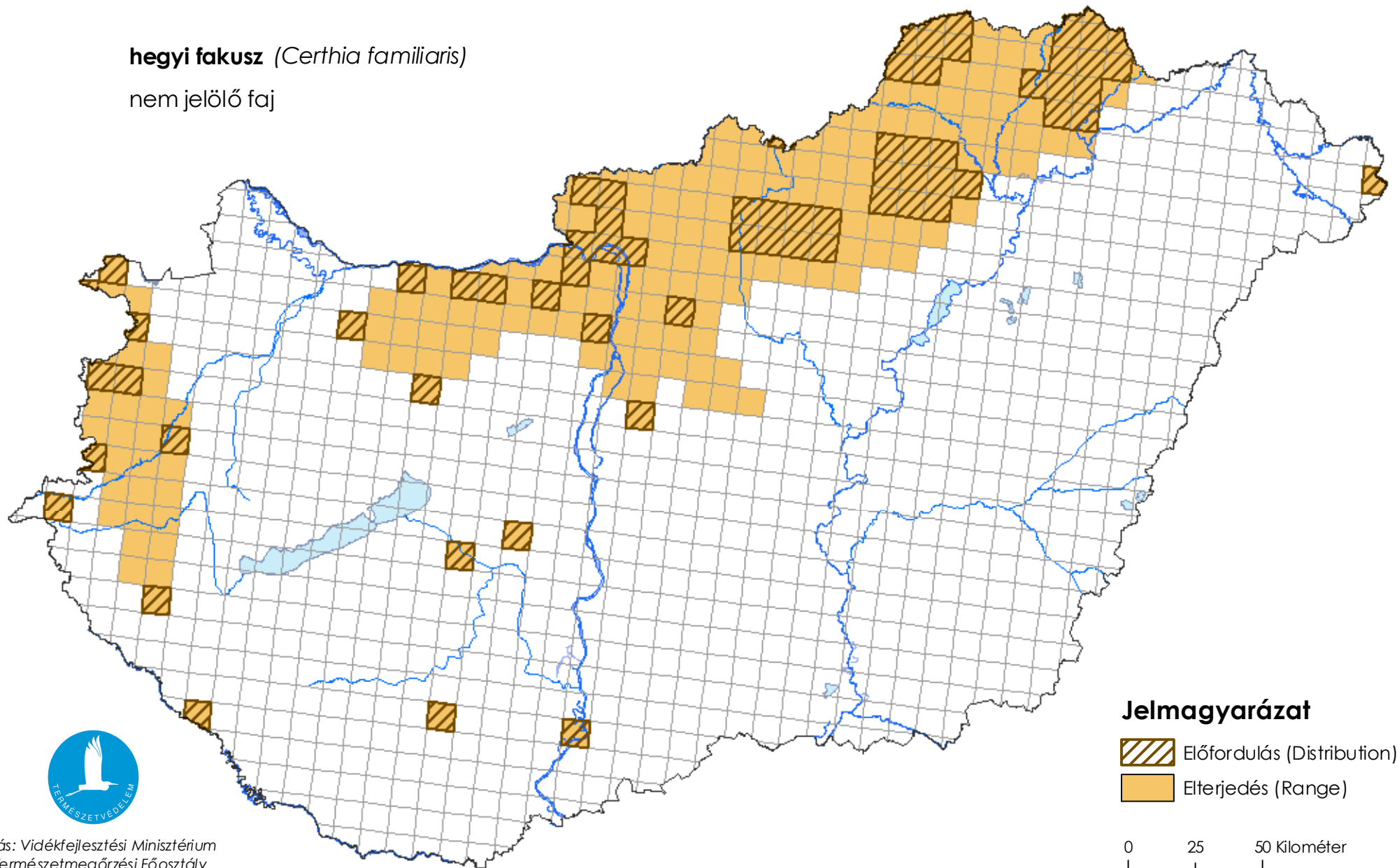
| | | | | |
|--------------------------------------|--------|-----|-----------|-----------|
| 8.1.1 Population size | a)unit | N/A | b)minimum | c)maximum |
| 8.1.2 Method used | N/A | | | |
| 8.1.3 Short-term trend of population | N/A | | | |

8.2 Conservation Measures

Térképmelléklet a madárvédelmi irányelv 12. cikke alapján készített országjelentéshez 2013.

hegyi fakusz (*Certhia familiaris*)

nem jelölő faj



Forrás: Vidékfejlesztési Minisztérium
Természetmegőrzési Főosztály