

# Bird species' status and trends reporting format for the period 2008-2012 (Annex 2)

## 1. Species Information

1.1 Member State	Hungary
1.2.2 Natura 2000 code	A656
1.3 Species name	Parus ater all others
1.3.1 Sub-specific population	
1.4 Alternative species name	
1.5 Common name	fenyvescinege
1.6 Season	Breeding (B)

## 2. Population size

2.1 Year or period	2000-2012
2.2 Population size	a)unit number of pairs (p)      b)minimum 10300      c)maximum 26000
2.3 Type of estimate	Estimate derived from sample survey (95% CI range)
2.4 Method used	Estimate based on partial data with some extrapolation and/or modelling (2)
2.5 Quality	Moderate (2)
2.6 Sources	National common bird monitoring scheme (MMM) database. Szép, T., Nagy, K., Nagy, Zs. & Halmos, G. (2012): Population trends of common breeding and wintering birds in Hungary, decline of long-distance migrant and farmland birds during 1999-2012. <i>Ornis Hungarica</i> 2012. 20(2): 13-63.

### 2.8 Additional information

MMM 2000-2012 breeding season counts, evaluated by average value of the surveyed years on 100 m radius.

## 3. Population trend

### 3.1 Short-term trend (last 12 years)

3.1.1 Period	1999-2012
3.1.2 Trend direction	Unknown (x)
3.1.3 Magnitude	a)Min                      b)Max
3.1.4 Method used	Estimate based on expert opinion with no or minimal sampling (1)
3.1.5 Quality	Moderate (2)
3.1.6 Sources	National common bird monitoring scheme (MMM) database. Szép, T., Nagy, K., Nagy, Zs. & Halmos, G. (2012): Population trends of common breeding and wintering birds in Hungary, decline of long-distance migrant and farmland birds during 1999-2012. <i>Ornis Hungarica</i> 2012. 20(2): 13-63.

### 3.2 Long-term trend (since c. 1980)

3.2.1 Period	1980-2012
3.2.2 Trend direction	Increase (+)
3.2.3 Magnitude	a)Min 50                      b)Max 100
3.2.4 Method used	Estimate based on expert opinion with no or minimal sampling (1)
3.2.5 Quality	Poor (1)
3.2.6 Sources	Consultation with national experts.

### 3.3 Additional information

## 4. Breeding distribution map and range size

# Bird species' status and trends reporting format for the period 2008-2012 (Annex 2)

4.1 Year or period	2000-2012
4.2 Sensitive species	No
4.3 Distribution map	Yes
4.4 Additional distribution map	No
4.5 Range map	Yes
4.6 Range surface area	28756
4.7 Method used	Estimate based on partial data with some extrapolation and/or modelling (2)
4.8 Quality	Moderate (2)
4.9 Sources	National common bird monitoring scheme (MMM) database.
4.11 Additional information	The distribution and range maps were created on the basis of concrete distribution records as well as data on habitat occurrence.

## 5. Breeding range trend

### 5.1 Short-term trend (last 12 years)

5.1.1 Period	2000-2012
5.1.2 Trend direction	Unknown (x)
5.1.3 Magnitude	a)Min                      b)Max
5.1.4 Method used	Estimate based on partial data with some extrapolation and/or modelling (2)
5.1.5 Quality	Moderate (2)
5.1.6 Sources	National common bird monitoring scheme (MMM) database.

### 5.2 Long-term trend (since c. 1980)

5.2.1 Period	1980-2012
5.2.2 Trend direction	Increase (+)
5.2.3 Magnitude	a)Min    0                      b)Max                      20
5.2.4 Method used	Estimate based on expert opinion with no or minimal sampling (1)
5.2.5 Quality	Moderate (2)
5.2.6 Sources	Consultation with national experts.
5.3 Additional information	

## 6. Progress in work related to international Species Action Plans (SAPs), Management Plans (MPs) and Brief Management Statements (BMSs)

6.1 Type of plan	No Plan (NA)
6.2 National plan adopted?	N/A
6.3 Measures linked to SAP/MP/BMS	
6.4 Further Information	

# Bird species' status and trends reporting format for the period 2008-2012 (Annex 2)

## 7. Main pressures and threats

## 8. SPA coverage and conservation measures

### 8.1 Population inside the SPA network

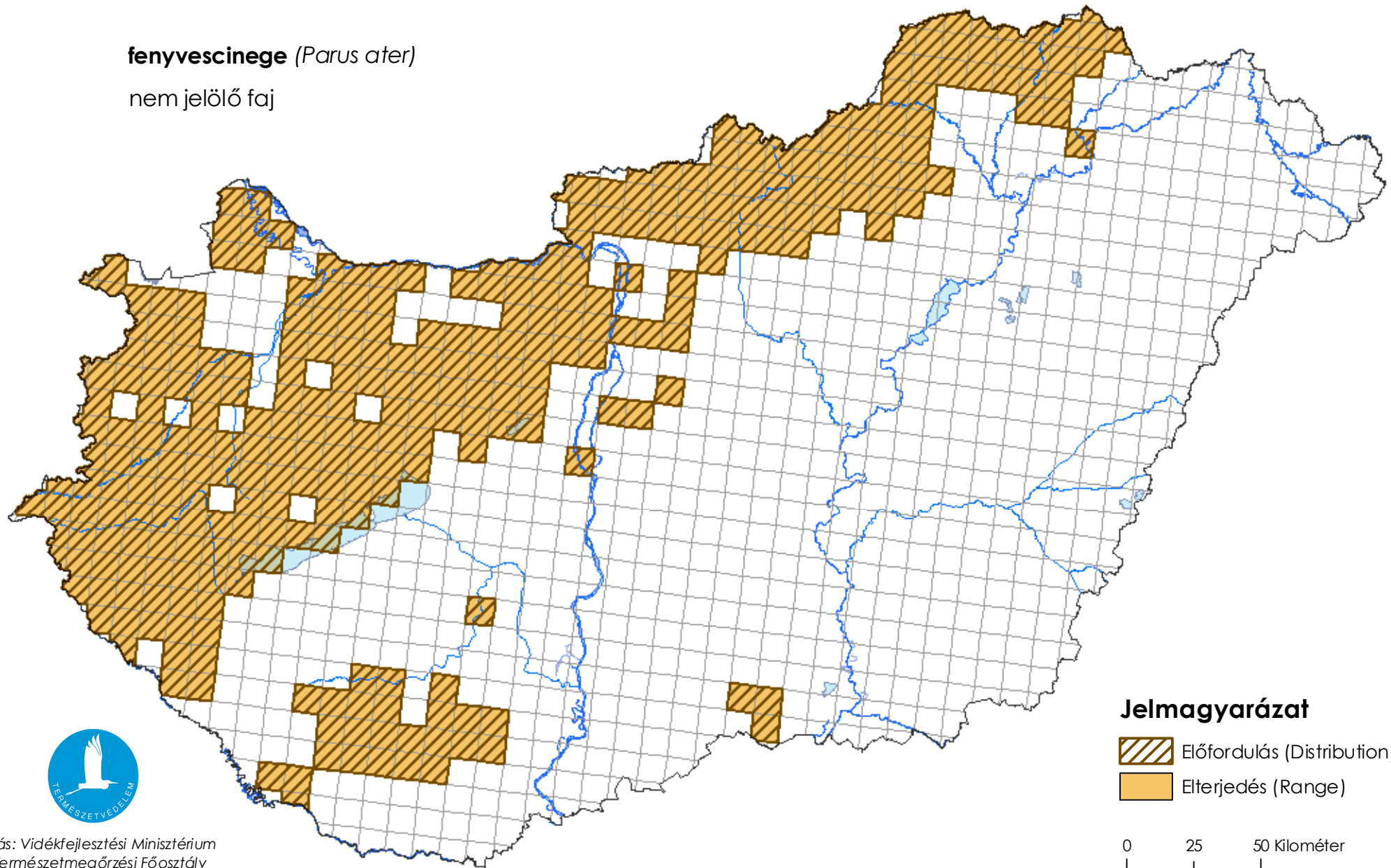
8.1.1 Population size	a)unit	N/A	b)minimum	c)maximum
8.1.2 Method used	N/A			
8.1.3 Short-term trend of population	N/A			

### 8.2 Conservation Measures

# Térképmelléklet a madárvédelmi irányelv 12. cikke alapján készített országjelentéshez 2013.

**fenyvescinege** (*Parus ater*)

nem jelölő faj



Forrás: Vidékfejlesztési Minisztérium  
Természetmegőrzési Főosztály