

# PART D - REPORT FORMAT ON THE 'MAIN RESULTS OF THE SURVEILLANCE UNDER ARTICLE 17' FOR ANNEX I HABITAT TYPES OF DIRECTIVE 92/43/EEC

## NATIONAL LEVEL

### 1. GENERAL INFORMATION

1.1 Member State	<b>HU</b>
1.2 Habitat code	<b>6210</b>

### 2. MAPS

*Distribution of the habitat type within the Member State concerned*

2.1 Year or period	2019–2024
2.2 Distribution map	Yes
2.3 Distribution map Method used	Based mainly on extrapolation from a limited amount of data
2.4 Additional maps (Optional)	–
2.5 Additional information (Optional)	–

## BIOGEOGRAPHICAL LEVEL

### 3. BIOGEOGRAPHICAL AND MARINE REGIONS

3.1 Biogeographical or marine region where the habitat occurs	Pannonian
3.2 First time reporting	No
3.3 Additional information	–
3.4 Sources of information	Monitoring reports of Habitat Mapping (2019-2024) in the frame of the Hungarian Biodiversity Monitoring System Monitoring reports of structure and function monitoring of the habitats (2019-2024) in the frame of the Hungarian Biodiversity Monitoring System Natura 2000 management plans, including habitat maps (2019-2024)

### 4. RANGE

*Range within the biogeographical/marine region concerned*

4.1 Surface area (km <sup>2</sup> )	38113.51
-------------------------------------	----------

4.2 Change and reason for change in surface area of range and main reason	Is there a change between reporting periods? yes, due to improved knowledge/more accurate data	
	The change is mainly due to: improved knowledge or more accurate data	
4.3 Short-term trend Period	2013–2024	
4.4 Short-term trend Direction	stable	
4.5 Short-term trend Magnitude (Optional)	a) Estimated Minimum	–
	b) Estimated Maximum	–
	c) Pre-defined range	–
	d) Unknown	–
4.6 Short-term trend Magnitude Type of estimate (Optional)	–	
4.7 Short-term trend Method used	Based mainly on extrapolation from a limited amount of data	
4.8 Long-term trend Period (Optional)	–	
4.9 Long-term trend Direction (Optional)	–	
4.10 Long-term trend Magnitude (Optional)	a) Minimum	–
	b) Maximum	–
4.11 Long-term trend Method used (Optional)	–	
4.12 Favourable reference range	a) –	
	b) <i>if a precise favourable reference range is unknown Indicate if the range is:</i> approximately equal to the favourable reference range (less than 2% smaller)	
	c) –	
	d) <i>Indicate method used to set reference value (multiple methods can be chosen)</i>	<i>Indicate the quality of information available:</i>
	Expert opinion	
4.13 Range when Directive came into force (Optional)	–	

4.14 Additional information (Optional)	–
--	---

## 5. AREA COVERED BY HABITAT

*Area covered by the habitat type within the range in the biogeographical/marine region concerned*

5.1 Year or period	2019–2024	
5.2 Surface area (in km <sup>2</sup> )	a) Minimum	165
	b) Maximum	220
	c) Best single value	–
5.3 Type of estimate	Best estimate	
5.4 Surface area Method used	Based mainly on extrapolation from a limited amount of data	
5.5 Change and reason for change in surface area and main reason	Is there a change between reporting periods?	
	yes, due to genuine change yes, due to improved knowledge/more accurate data	
	The change is mainly due to: improved knowledge or more accurate data	
5.6 Short-term trend Period	2019–2024	
5.7 Short-term trend Direction	uncertain	
5.8 Short-term trend Magnitude	a) Estimated Minimum	–
	b) Estimated Maximum	–
	c) Pre-defined range	-
	d) Unknown	Unknown
5.9 Short-term trend Magnitude Type of estimate	Best estimate	
5.10 Short-term trend Method used	Based mainly on extrapolation from a limited amount of data	
5.11 Long-term trend Period (Optional)	–	
5.12 Long-term trend Direction (Optional)	–	
5.13 Long-term trend	a) Minimum	–

Magnitude (Optional)	b) Maximum	–	
	c) Confidence interval	–	
5.14 Long-term trend Method used (Optional)	–		
5.15 Favourable reference area	a) –		
	b) <i>if a precise favourable reference area is unknown Indicate if the <u>area</u> is:</i> between 2% and 10% smaller than the FRA		
	c) <i>Indicate if favourable reference area is unknown</i> –		
	d) <i>Indicate method used to set reference value (multiple methods can be chosen)</i>	<i>Indicate the quality of information available:</i>	
	Expert opinion		
5.16 Surface area when Directive came into force (Optional)	–		
5.17 Additional information (Optional)	–		

## 6. STRUCTURE AND FUNCTIONS

6.1 Condition of habitat	a) Area in good condition	Minimum	65 km <sup>2</sup>
		Maximum	95 km <sup>2</sup>
	b) Area in not-good condition	Minimum	100 km <sup>2</sup>
		Maximum	125 km <sup>2</sup>
	c) Area where condition is not known	Minimum	0
		Maximum	0
6.2 Condition of habitat Method used	Based mainly on extrapolation from a limited amount of data		
6.3 Short-term trend of habitat area in good condition Period	2013–2024		
6.4 Short-term trend of habitat area in good condition Direction	uncertain		
6.5 Short-term trend of habitat area in good condition Method used	Based mainly on extrapolation from a limited amount of data		
6.6 Typical species	<i>Has the list of typical species changed in comparison to the previous reporting period?</i> No <i>If yes, provide the updated list as an additional spreadsheet and fill field 6.7</i>		

6.7 Typical species Method used (Optional)	–
6.8 Additional information (Optional)	–

## 7. MAIN PRESSURES AND THREATS

### 7.1 Characterisation of pressures

Pressure	Timing	Scope (proportion of area affected)	Influence (on area or habitat condition)	Invasive alien species of Union concern	Other invasive alien species
<b>PA01</b> Agriculture - Conversion into agricultural land	ongoing and likely to be in the future	majority 50 – 90%	High influence		
<b>PA02</b> Agriculture - Conversion from one type of agricultural land use to another	ongoing and likely to be in the future	minority <50%	High influence		
<b>PA05</b> Agriculture - Abandonment of management/use of grasslands and other agricultural and agroforestry systems	ongoing and likely to be in the future	minority <50%	Medium influence		
<b>PA07</b> Agriculture - Intensive grazing or overgrazing by livestock	ongoing and likely to be in the future	minority <50%	Medium influence		
<b>PB01</b> Forestry - Conversion to forest from other land uses, or afforestation	ongoing and likely to be in the future	minority <50%	High influence		
<b>PF05</b> Infrastructure - Sports, tourism and leisure activities	ongoing and likely to be in the future	minority <50%	High influence		
<b>PG09</b> Species exploitation - Management of fishing stocks and game	ongoing and likely to be in the future	majority 50 – 90%	High influence		
<b>PH04</b> Safety - Vandalism or arson (incl. Human-introduced wild fire)	ongoing and likely to be in the future	majority 50 – 90%	Medium influence		

<b>PH08</b> Safety - Other human intrusions or disturbance not mentioned above	ongoing and likely to be in the future	minority <50%	Medium influence		
<b>PI01</b> Problematic species - Invasive alien species of Union concern	ongoing and likely to be in the future	minority <50%	High influence	<i>Ailanthus altissima</i> <i>Asclepias syriaca</i>	
<b>PI02</b> Problematic species - Other invasive alien species (other than species of Union concern)	ongoing and likely to be in the future	minority <50%	High influence		<i>Elaeagnus angustifolia</i> <i>Ovis gmelini musimon</i> <i>Pawlonia tomentosa</i> <i>Robinia pseudoacacia</i> <i>Solidago canadensis</i> <i>Solidago gigantea</i>
<b>PI03</b> Problematic species - Problematic native species	ongoing and likely to be in the future	minority <50%	Medium influence		
<b>PJ03</b> Climate change - Changes in precipitation regimes	ongoing and likely to be in the future	majority 50 – 90%	High influence		
<b>PM07</b> Natural - Natural processes without direct or indirect influence from human activities or climate change	ongoing and likely to be in the future	majority 50 – 90%	Medium influence		
7.2 Methods used (Optional)	–				
7.3 Sources of information (Optional)	–				
7.4 Additional information (Optional)	–				

## 8. CONSERVATION MEASURES

8.1 Status of measures	<i>Are measures needed?</i> Yes <i>Status of measures:</i> Part of measures identified have been taken
8.2 Scope of measures taken	<50%
8.3 Main purpose of the measures taken	A. Indicate the main purpose(s) of measures taken: Maintain the current range, surface area or structure and functions of the habitat type

	<p>B. The main (primary) purpose:</p> <p>Maintain current state</p>	
8.4 Location of the measures taken	Both inside and outside Natura 2000	
8.5 Response to the measures (when the measures start to neutralize the pressure(s) and produce positive effects)	Medium-term response (within the next two reporting periods, 2025–2036)	
8.6 List of main conservation measures	<p>MA01 – Prevent conversion of natural and semi-natural habitats, and habitats of species into agricultural land</p> <p>MA03 – Maintain existing extensive agricultural practices and agricultural landscape features</p> <p>MA04 – Reinststate appropriate agricultural practices to address abandonment, including mowing, grazing, burning or equivalent measures</p> <p>MA05 – Adapt mowing, grazing and other equivalent agricultural activities (e.g. burning)</p> <p>MA06 – Stop mowing, grazing and other equivalent agricultural activities e.g. burning (incl. restore or improve habitats)</p> <p>MB01 – Prevent conversion of (semi-) natural habitats into forests and of (semi-) natural forests into intensive forest plantation</p> <p>MG03 – Reducing the impact of (re-) stocking for fishing and hunting, of artificial feeding and predator control</p> <p>MH03 – Reduce impact of other specific human activities</p> <p>MI01 – Early detection and rapid eradication of invasive alien species of Union concern</p> <p>MI02 – Management, control or eradication of established invasive alien species of Union concern</p> <p>MI03 – Management, control or eradication of other invasive alien species</p> <p>MI05 – Management of problematic native species</p> <p>MJ01 – Implement climate change mitigation measures</p> <p>MM01 – Management of habitats (others than agriculture and forest) to slow, stop or reverse natural processes that occur without direct or indirect influence from human activities or climate change</p>	
8.7 Additional information (Optional)	–	

## 9. FUTURE PROSPECTS

9.1 Future prospects of parameters	a) Range	Poor
	b) Area	Poor
	c) Structure and functions	Poor
9.2 Additional information (Optional)	–	

## 10. CONCLUSIONS

*Assessment of conservation status at end of reporting period*

10.1 Range	Favourable (FV)	
10.2 Area	Inadequate (U1)	
10.3 Specific structure and functions (incl. typical species)	Bad (U2)	
10.4 Future prospects	Inadequate (U1)	
10.5 Overall assessment of Conservation Status	Bad (U2)	
10.6 Overall trend in Conservation Status	unknown	
10.7 Change and reasons for change in conservation status and conservation status trend	Overall assessment of conservation status (10.5)	
	<i>Indicate whether there is a change from the previous reporting round and (if yes) the nature of that change. More than one option (a to f) can be chosen.</i>	yes, due to genuine change yes, due to improved knowledge/more accurate data
	<i>The change is mainly due to (select only one option):</i>	genuine change
	Overall trend in conservation status (10.6)	
	<i>Indicate whether there is a change from the previous reporting round and (if yes) the nature of that change. More than one option (b to f) can be chosen.</i>	yes, due to genuine change
	<i>The change is mainly due to (select only one option):</i>	genuine change
10.8 Additional information (Optional)		

## 11. NATURA 2000 (PROPOSED SITES OF COMMUNITY IMPORTANCE (PSCIs), SITES OF COMMUNITY IMPORTANCE (SCIs) AND SPECIAL AREAS OF CONSERVATION (SACs) COVERAGE FOR ANNEX I HABITAT TYPES OF DIRECTIVE 92/43/EEC

11.1 Surface area of the habitat type inside the pSCIs, SCIs and SACs network <i>(In km<sup>2</sup> in biogeographical/marine region including all sites where the habitat is present)</i>	a) Minimum	150
	b) Maximum	190
	c) Best single value	–

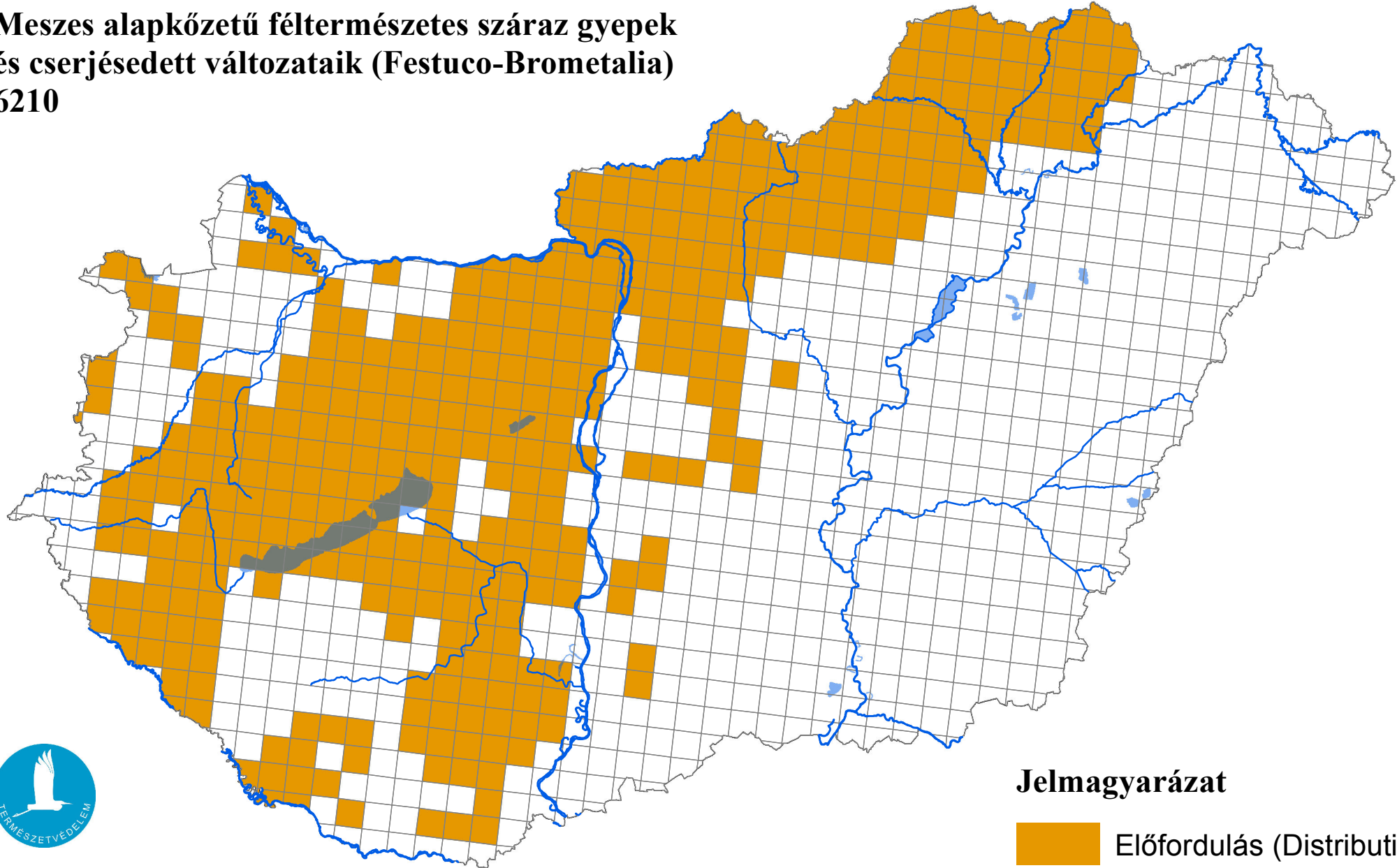
11.2 Type of estimate	Best estimate
11.3 Surface area of the habitat type inside the network Method used	Based mainly on extrapolation from a limited amount of data
11.4 Short-term trend of habitat area within the network Direction	uncertain
11.5 Short-term trend of habitat area within the network Method used	Based mainly on extrapolation from a limited amount of data
11.6 Short-term trend of habitat area in good condition within the network Direction	decreasing
11.7 Short-term trend of habitat area in good condition within network Method used	Based mainly on extrapolation from a limited amount of data
11.8 Additional information (Optional)	–

## 12. COMPLEMENTARY INFORMATION

12.1 Justification of % thresholds for trends (Optional)	–
12.2 Other relevant information (Optional)	–

# Az élőhelyvédelmi irányelv 17. cikke szerinti országjelentés, 2025

Meszes alapkőzetű féltermészetes száraz gyepek  
és cserjésedett változataik (Festuco-Brometalia)  
6210



Forrás: Agrárminisztérium,  
Természetmegőrzési Főosztály

## Jelmagyarázat

