

# PART D - REPORT FORMAT ON THE 'MAIN RESULTS OF THE SURVEILLANCE UNDER ARTICLE 17' FOR ANNEX I HABITAT TYPES OF DIRECTIVE 92/43/EEC

## NATIONAL LEVEL

### 1. GENERAL INFORMATION

1.1 Member State	<b>HU</b>
1.2 Habitat code	<b>91F0</b>

### 2. MAPS

*Distribution of the habitat type within the Member State concerned*

2.1 Year or period	2019–2024
2.2 Distribution map	Yes
2.3 Distribution map Method used	Based mainly on extrapolation from a limited amount of data
2.4 Additional maps (Optional)	–
2.5 Additional information (Optional)	–

## BIOGEOGRAPHICAL LEVEL

### 3. BIOGEOGRAPHICAL AND MARINE REGIONS

3.1 Biogeographical or marine region where the habitat occurs	Pannonian
3.2 First time reporting	No
3.3 Additional information	–
3.4 Sources of information	Monitoring reports of Habitat Mapping (2019-2024) in the frame of the Hungarian Biodiversity Monitoring System Monitoring reports of structure and function monitoring of the habitats (2019-2024) in the frame of the Hungarian Biodiversity Monitoring System Natura 2000 management plans, including habitat maps (2019-2024)

### 4. RANGE

*Range within the biogeographical/marine region concerned*

4.1 Surface area (km <sup>2</sup> )	38236
-------------------------------------	-------

4.2 Change and reason for change in surface area of range and main reason	Is there a change between reporting periods? yes, due to improved knowledge/more accurate data	
	The change is mainly due to: improved knowledge or more accurate data	
4.3 Short-term trend Period	2013–2024	
4.4 Short-term trend Direction	stable	
4.5 Short-term trend Magnitude (Optional)	a) Estimated Minimum	–
	b) Estimated Maximum	–
	c) Pre-defined range	–
	d) Unknown	–
4.6 Short-term trend Magnitude Type of estimate (Optional)	–	
4.7 Short-term trend Method used	Based mainly on extrapolation from a limited amount of data	
4.8 Long-term trend Period (Optional)	–	
4.9 Long-term trend Direction (Optional)	–	
4.10 Long-term trend Magnitude (Optional)	a) Minimum	–
	b) Maximum	–
4.11 Long-term trend Method used (Optional)	–	
4.12 Favourable reference range	a) –	
	b) <i>if a precise favourable reference range is unknown Indicate if the range is:</i> between 11% and 50% smaller than the FRR	
	c) –	
	d) <i>Indicate method used to set reference value (multiple methods can be chosen)</i>	<i>Indicate the quality of information available:</i>
	Reference-based approach	Moderate
Expert opinion		

4.13 Range when Directive came into force (Optional)	–
4.14 Additional information (Optional)	–

## 5. AREA COVERED BY HABITAT

*Area covered by the habitat type within the range in the biogeographical/marine region concerned*

5.1 Year or period	2019–2024	
5.2 Surface area (in km <sup>2</sup> )	a) Minimum	236
	b) Maximum	348
	c) Best single value	–
5.3 Type of estimate	Best estimate	
5.4 Surface area Method used	Based mainly on extrapolation from a limited amount of data	
5.5 Change and reason for change in surface area and main reason	Is there a change between reporting periods? yes, due to improved knowledge/more accurate data	
	The change is mainly due to: improved knowledge or more accurate data	
5.6 Short-term trend Period	2013–2024	
5.7 Short-term trend Direction	decreasing	
5.8 Short-term trend Magnitude	a) Estimated Minimum	–
	b) Estimated Maximum	–
	c) Pre-defined range	-12 – 0%
	d) Unknown	–
5.9 Short-term trend Magnitude Type of estimate	Best estimate	
5.10 Short-term trend Method used	Based mainly on extrapolation from a limited amount of data	
5.11 Long-term trend Period (Optional)	–	
5.12 Long-term trend Direction (Optional)	–	

5.13 Long-term trend Magnitude (Optional)	a) Minimum	–	
	b) Maximum	–	
	c) Confidence interval	–	
5.14 Long-term trend Method used (Optional)	–		
5.15 Favourable reference area	a) –		
	b) <i>if a precise favourable reference area is unknown Indicate if the <u>area</u> is:</i>	between 26% and 50% smaller than the FRA	
	c) <i>Indicate if favourable reference area is unknown</i>	–	
	d) <i>Indicate method used to set reference value (multiple methods can be chosen)</i>	<i>Indicate the quality of information available:</i>	
	Reference-based approach	Low	
	Expert opinion		
5.16 Surface area when Directive came into force (Optional)	–		
5.17 Additional information (Optional)	–		

## 6. STRUCTURE AND FUNCTIONS

6.1 Condition of habitat	a) Area in good condition	Minimum	106 km <sup>2</sup>
		Maximum	157 km <sup>2</sup>
	b) Area in not-good condition	Minimum	118 km <sup>2</sup>
		Maximum	174 km <sup>2</sup>
	c) Area where condition is not known	Minimum	12 km <sup>2</sup>
		Maximum	17 km <sup>2</sup>
6.2 Condition of habitat Method used	Based mainly on extrapolation from a limited amount of data		
6.3 Short-term trend of habitat area in good condition Period	2013–2024		
6.4 Short-term trend of habitat area in good condition Direction	decreasing		
6.5 Short-term trend of habitat area in good condition Method used	Based mainly on expert opinion with very limited data		

6.6 Typical species	<i>Has the list of typical species changed in comparison to the previous reporting period?</i> No <i>If yes, provide the updated list as an additional spreadsheet and fill field 6.7</i>
6.7 Typical species Method used (Optional)	–
6.8 Additional information (Optional)	–

## 7. MAIN PRESSURES AND THREATS

### 7.1 Characterisation of pressures

Pressure	Timing	Scope (proportion of area affected)	Influence (on area or habitat condition)	Invasive alien species of Union concern	Other invasive alien species
<b>PB02</b> Forestry - Conversion from one type of forestry land use to another	ongoing and likely to be in the future	minority <50%	Medium influence		
<b>PB03</b> Forestry - Introduction and spread of new species for forestry purposes	ongoing and likely to be in the future	majority 50 – 90%	High influence		
<b>PB06</b> Forestry - Logging or thinning (excl. clear cutting)	ongoing and likely to be in the future	majority 50 – 90%	High influence		
<b>PB07</b> Forestry - Removal of dead and dying trees (incl. debris)	ongoing and likely to be in the future	majority 50 – 90%	High influence		
<b>PB08</b> Forestry - Removal of old trees (excl. dead or dying trees)	ongoing and likely to be in the future	majority 50 – 90%	High influence		
<b>PB09</b> Forestry - Clear- cutting, removal of all trees	ongoing and likely to be in the future	majority 50 – 90%	High influence		
<b>PG09</b> Species exploitation - Management of fishing stocks and game	ongoing and likely to be in the future	majority 50 – 90%	High influence		
<b>PB17</b> Forestry - Use of plant protection chemicals	ongoing and likely to be in the future	minority <50%	Medium influence		

<b>PI01</b> Problematic species - Invasive alien species of Union concern	ongoing and likely to be in the future	minority <50%	Medium influence	<i>Ailanthus altissima</i>	
<b>PI02</b> Problematic species - Other invasive alien species (other than species of Union concern)	ongoing and likely to be in the future	majority 50 – 90%	High influence		<i>Amorpha fruticosa</i> <i>Acer negundo</i> <i>Celtis occidentalis</i> <i>Fraxinus pennsylvanica</i> <i>Solidago spp.</i> <i>Aster spp.</i> <i>Robinia pseudoacacia</i> <i>Acer saccharum</i>
<b>PJ01</b> Climate change - Temperature changes and extremes	ongoing and likely to be in the future	whole >90%	High influence		
<b>PJ03</b> Climate change - Changes in precipitation regimes	ongoing and likely to be in the future	majority 50 – 90%	High influence		
<b>PL05</b> Water regimes - Modification of hydrological flow	ongoing and likely to be in the future	majority 50 – 90%	High influence		
<b>PF14</b> Infrastructure - Modification of flooding regimes, flood protection for built-up areas	ongoing and likely to be in the future	minority <50%	Medium influence		
7.2 Methods used (Optional)	estimatePartial				
7.3 Sources of information (Optional)	–				
7.4 Additional information (Optional)	–				

## 8. CONSERVATION MEASURES

8.1 Status of measures	<i>Are measures needed?</i> <b>Yes</b> <i>Status of measures:</i> Part of measures identified have been taken
8.2 Scope of measures taken	<50%

8.3 Main purpose of the measures taken	<p><b>A. Indicate the main purpose(s) of measures taken:</b>  Maintain the current range, surface area or structure and functions of the habitat type  Increase the surface area of the habitat type (related to 'Area covered by habitat')  Restore the structure and functions, including the status of typical species (related to 'Specific structure and functions')</p> <p><b>B. The main (primary) purpose:</b>  improve habitat condition</p>
8.4 Location of the measures taken	Both inside and outside Natura 2000
8.5 Response to the measures (when the measures start to neutralize the pressure(s) and produce positive effects)	Medium-term response (within the next two reporting periods, 2025–2036)
8.6 List of main conservation measures	MB02 – Maintain existing traditional forest management and exploitation practices MB05 – Adapt/change forest management and exploitation practices MB06 – Stop forest management and exploitation practices MB07 – Measures to combat illegal logging MB14 – Manage drainage and water abstraction for forestry (inc. restoration of drained or hydrologically altered habitats) MG03 – Reducing the impact of (re-) stocking for fishing and hunting, of artificial feeding and predator control MI02 – Management, control or eradication of established invasive alien species of Union concern MI03 – Management, control or eradication of other invasive alien species MJ01 – Implement climate change mitigation measures MK03 – Restoration of habitats impacted by multi-purpose hydrological changes MM01 – Management of habitats (others than agriculture and forest) to slow, stop or reverse natural processes that occur without direct or indirect influence from human activities or climate change
8.7 Additional information (Optional)	–

## 9. FUTURE PROSPECTS

9.1 Future prospects of parameters	a) Range	Good
	b) Area	Poor
	c) Structure and functions	Bad
9.2 Additional information (Optional)	–	

## 10. CONCLUSIONS

*Assessment of conservation status at end of reporting period*

10.1 Range	Bad (U2)	
10.2 Area	Bad (U2)	
10.3 Specific structure and functions (incl. typical species)	Bad (U2)	
10.4 Future prospects	Bad (U2)	
10.5 Overall assessment of Conservation Status	Bad (U2)	
10.6 Overall trend in Conservation Status	deteriorating	
10.7 Change and reasons for change in conservation status and conservation status trend	Overall assessment of conservation status (10.5)	
	<i>Indicate whether there is a change from the previous reporting round and (if yes) the nature of that change. More than one option (a to f) can be chosen.</i>	no, there is no difference
	<i>The change is mainly due to (select only one option):</i>	
	Overall trend in conservation status (10.6)	
	<i>Indicate whether there is a change from the previous reporting round and (if yes) the nature of that change. More than one option (b to f) can be chosen.</i>	no, there is no difference
	<i>The change is mainly due to (select only one option):</i>	
10.8 Additional information (Optional)		

## 11. NATURA 2000 (PROPOSED SITES OF COMMUNITY IMPORTANCE (pSCIs), SITES OF COMMUNITY IMPORTANCE (SCIs) AND SPECIAL AREAS OF CONSERVATION (SACs) COVERAGE FOR ANNEX I HABITAT TYPES OF DIRECTIVE 92/43/EEC

11.1 Surface area of the habitat type inside the pSCIs, SCIs and SACs network <i>(In km<sup>2</sup> in biogeographical/marine region including all sites where the habitat is present)</i>	a) Minimum	210
	b) Maximum	260
	c) Best single value	–

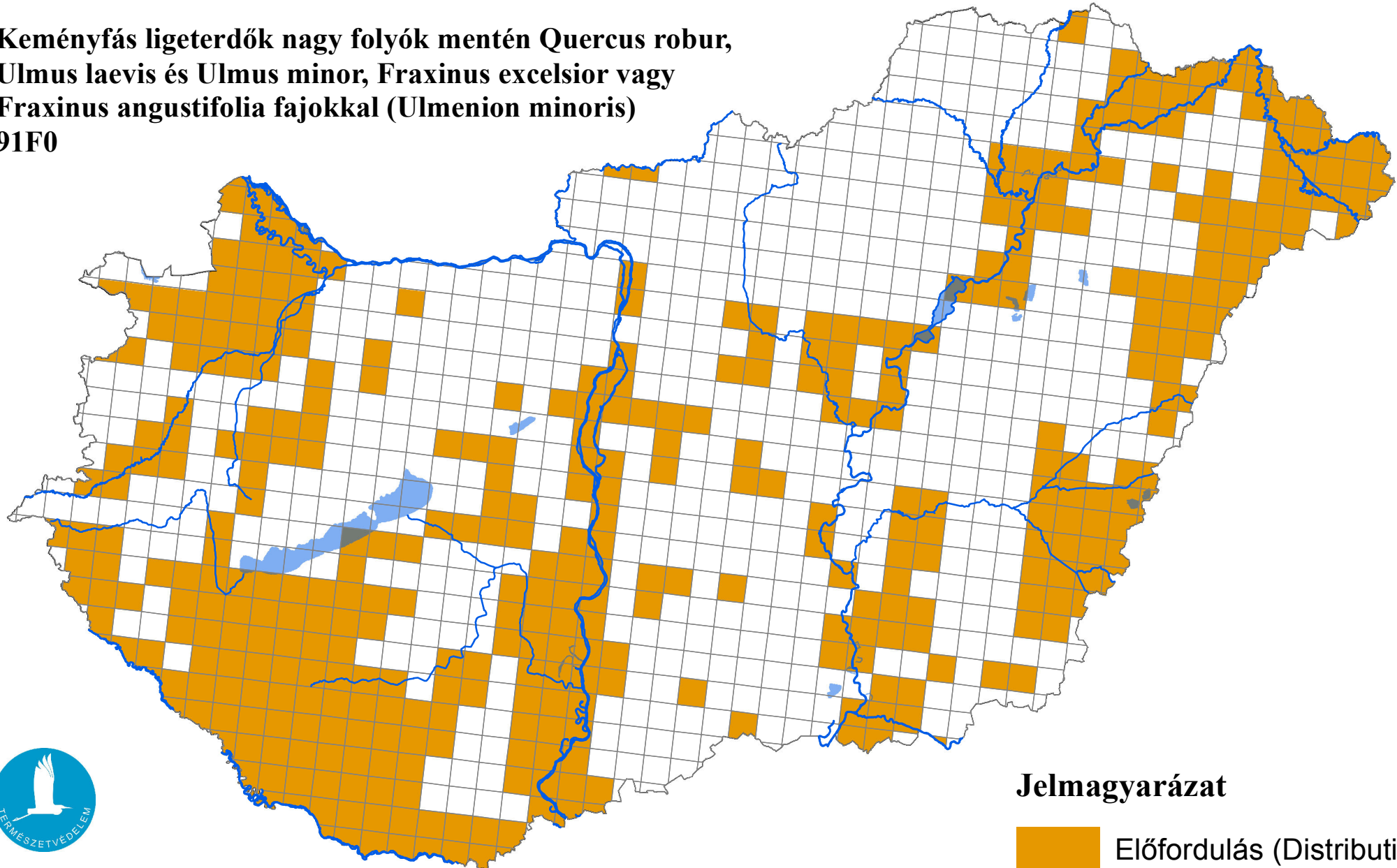
11.2 Type of estimate	Best estimate
11.3 Surface area of the habitat type inside the network Method used	Complete survey or a statistically robust estimate
11.4 Short-term trend of habitat area within the network Direction	decreasing
11.5 Short-term trend of habitat area within the network Method used	Based mainly on extrapolation from a limited amount of data
11.6 Short-term trend of habitat area in good condition within the network Direction	decreasing
11.7 Short-term trend of habitat area in good condition within network Method used	Based mainly on extrapolation from a limited amount of data
11.8 Additional information (Optional)	–

## 12. COMPLEMENTARY INFORMATION

12.1 Justification of % thresholds for trends (Optional)	–
12.2 Other relevant information (Optional)	–

# Az élőhelyvédelmi irányelv 17. cikke szerinti országjelentés, 2025

**Keményfás ligeterdők nagy folyók mentén *Quercus robur*,  
*Ulmus laevis* és *Ulmus minor*, *Fraxinus excelsior* vagy  
*Fraxinus angustifolia* fajokkal (Ulmenion minoris)  
91F0**



Forrás: Agrárminisztérium,  
Természetmegőrzési Főosztály

## Jelmagyarázat

