

PART B - BIRD SPECIES' STATUS AND TRENDS REPORT FORMAT

| 1. SPECIES INFORMATION | |
|--|-----------------------|
| 1.1 Member State | HU |
| 1.2 Species code | A043-B |
| 1.3 EURING code | 1610 |
| 1.4 Species scientific name | <i>Anser anser</i> |
| 1.5 Subspecific population | all other populations |
| 1.6 Alternative species scientific name (Optional) | |
| 1.7 Common name (Optional) | |

| 2. SEASON | |
|----------------------------|----------|
| 2.1 Season | Breeding |
| 2.2 First time reporting | No |
| 2.3 Additional information | |

| 3. POPULATION SIZE | | |
|--|--|-----------------|
| 3.1 Year or period | 2019-2024 | |
| 3.2 Population size | a) Unit | number of pairs |
| | b) Minimum | 6600 |
| | c) Maximum | 9800 |
| | d) Best single value | – |
| 3.3 Type of estimate | Best estimate | |
| 3.4 Population size Method used | Based mainly on extrapolation from a limited amount of data | |
| 3.5 Sources | Szép et. al (2022): Bird Atlas of Hungary (https://mme.hu/madaratlasz), corrigated by data of Common Breeding Bird Survey (https://mmm.mme.hu) | |
| 3.6 Change and reason for change (since previous report) | Is there a change between reporting periods? yes, due to genuine change | |
| | The change is mainly due to: genuine change | |
| 3.7 Additional information (Optional) | | |

4. POPULATION TREND

4.1 Short-term trend (last 12 years)

| | | |
|------------------------------------|---|-----|
| 4.1.1 Short-term trend Period | 2013-2024 | |
| 4.1.2 Short-term trend Direction | increasing | |
| 4.1.3 Short-term trend Magnitude | a) Minimum | 105 |
| | b) Maximum | 150 |
| | c) Best single value | – |
| 4.1.4 Short-term trend Method used | Based mainly on extrapolation from a limited amount of data | |
| 4.1.5 Sources | Common bird monitoring scheme (MMM) database (https://mmm.mme.hu). | |

4.2 Long-term trend (since ca. 1980)

| | | |
|---------------------------------------|---|-----|
| 4.2.1 Long-term trend Period | 1990-2024 | |
| 4.2.2 Long-term trend Direction | increasing | |
| 4.2.3 Long-term trend Magnitude | a) Minimum | 560 |
| | b) Maximum | 790 |
| | c) Best single value | – |
| 4.2.4 Long-term trend Method used | Based mainly on expert opinion with very limited data | |
| 4.2.5 Sources | Haraszthy L. (szerk.) (1984): Magyarország fészkelő madarai. Natura, Budapest. (2nd edition: 1998); Szép et. al (2022): Bird Atlas of Hungary (https://mme.hu/madaratlasz) | |
| 4.3 Additional information (Optional) | | |

5. BREEDING DISTRIBUTION MAP AND SIZE

| | |
|---------------------------------------|--|
| 5.1 Sensitive species | No |
| 5.2 Year or period | 2019-2024 |
| 5.3 Breeding distribution map | Yes |
| 5.4 Breeding distribution size | 25741 |
| 5.5 Breeding distribution Method used | Based mainly on extrapolation from a limited amount of data |
| 5.6 Additional maps Optional | No |
| 5.7 Sources | MME's Bird Atlas Database (https://map.mme.hu) - all breeding probabilities |
| 5.8 Additional information Optional | |

6. BREEDING DISTRIBUTION TREND

6.1 Short-term trend (last 12 years)

| | | |
|------------------------------------|---|---|
| 6.1.1 Short-term trend Period | 2013-2024 | |
| 6.1.2 Short-term trend Direction | stable | |
| 6.1.3 Short-term trend Magnitude | a) Minimum | – |
| | b) Maximum | – |
| | c) Best single value | – |
| 6.1.4 Short-term trend Method used | Based mainly on extrapolation from a limited amount of data | |
| 6.1.5 Sources | MME/BirdLife Hungary's Bird Atlas database, Szép et. al (2022): Bird Atlas of Hungary (https://mme.hu/madaratlasz) | |

6.2 Long-term trend (since ca. 1980)

| | | |
|-------------------------------------|--|----|
| 6.2.1 Long-term trend Period | 1980-2024 | |
| 6.2.2 Long-term trend Direction | increasing | |
| 6.2.3 Long-term trend Magnitude | a) Minimum | 20 |
| | b) Maximum | 30 |
| | c) Best single value | – |
| 6.2.4 Long-term trend Method used | Based mainly on expert opinion with very limited data | |
| 6.2.5 Sources | Haraszthy L. (szerk.) (1984): Magyarország fészkelő madarai. Natura, Budapest.; Szép et. al (2022): Bird Atlas of Hungary (https://mme.hu/madaratlasz) | |
| 6.3 Additional information Optional | | |

7. MAIN PRESSURES AND THREATS

7.1 Characterisation of pressures

| Pressure | Timing | Scope (proportion of population affected) | Influence (on population or habitat of the species) | Location (where the pressure is primarily operating) | Invasive alien species of Union concern | Other invasive alien species |
|-------------|--|---|---|--|---|------------------------------|
| PA02 | ongoing and likely to be in the future | majority 50 – 90% | Medium influence | inside the Member State | | |
| PF01 | ongoing and likely to be in the future | majority 50 – 90% | Medium influence | inside the Member State | | |
| PG08 | ongoing and likely to be in the future | majority 50 – 90% | Medium influence | inside the Member State | | |
| PH08 | ongoing and likely to be in the future | majority 50 – 90% | Medium influence | inside the Member State | | |

| | | | | | | |
|---------------------------------------|--|---|------------------|-------------------------|--|--|
| PJ01 | ongoing and likely to be in the future | majority 50 – 90% | Medium influence | inside the Member State | | |
| PJ03 | ongoing and likely to be in the future | majority 50 – 90% | High influence | inside the Member State | | |
| PL06 | ongoing and likely to be in the future | majority 50 – 90% | High influence | inside the Member State | | |
| PM07 | ongoing and likely to be in the future | majority 50 – 90% | Medium influence | inside the Member State | | |
| 7.2 Methods used (Optional) | | Based mainly on extrapolation from a limited amount of data | | | | |
| 7.3 Sources of information (Optional) | | Szép et. al (2022): Bird Atlas of Hungary (https://mme.hu/madaratlasz) | | | | |
| 7.4 Additional information (Optional) | | | | | | |

8. CONSERVATION MEASURES

| | |
|---|--|
| 8.1 Status of measures | <p>Are measures needed?</p> <p>Yes</p> <p>Status of measures:</p> <p>Most/all of measures identified have been taken</p> |
| 8.2 Scope of measures taken | majority 50 - 90% |
| 8.3 Main purpose of the measures taken | <p>A. Indicate the main purpose(s) of measures taken: Restore habitat of the species</p> <p>B. The main (primary) purpose: Restore habitat of the species</p> |
| 8.4 Location of the measures | Both inside and outside Natura 2000 |
| 8.5 Response to the measures (when the measures start to neutralize the pressure(s) and produce positive effects) | Medium-term response (within the next two reporting periods) |
| 8.6 List of main conservation measures | MA01 MA13 MF01 MG02 MH03 MJ01 MJ02 MK02 MM04 |
| 8.7 Additional information Optional | Szép T. et al. (szerk.) 2022. Magyarország madáratlasza. 2., javított és kiegészített kiadás. – Agrárminisztérium, MME, Budapest. madaratlasz.mme.hu |

9. NATURA 2000 (SPECIAL PROTECTION AREAS (SPAs)) COVERAGE

| | | |
|--------------------------------|---------|-----------------|
| 9.1 Population size inside the | a) Unit | number of pairs |
|--------------------------------|---------|-----------------|

| | | |
|---|--|------|
| Natura 2000 (Special Protection Area (SPA)) network (on national level including all sites where the species is present) | b) Minimum | 6000 |
| | c) Maximum | 8000 |
| | d) Best single value | – |
| 9.2 Type of estimate | Best estimate | |
| 9.3 Population size inside the network Method used | Based mainly on extrapolation from a limited amount of data | |
| 9.4 Short-term trend of population size within the network Direction | increasing | |
| 9.5 Short-term trend of population size within the network Method used | Based mainly on extrapolation from a limited amount of data | |
| 9.6 Additional information (Optional) | The population size was calculated using the coverage rate (based on maximum detected specimen/UTM squares, in the MAP database of the BirdLife Hungary), based on the national population. The coverage of SPAs is 83%. | |

10. PROGRESS IN WORK RELATED TO INTERNATIONAL SPECIES ACTION PLANS (SAPs), MANAGEMENT PLANS (MPs) AND BRIEF MANAGEMENT STATEMENTS (BMSSs)

| | | |
|--|---|--|
| 10.1 Type of international plan | – | |
| 10.2 Has a national plan linked to the international Species Action Plan (SAP) / Management Plan (MP) / Brief Management Statement (BMS) been adopted? | – | |
| 10.3 Assessment of the effectiveness of Species Action Plans (SAPs) for globally threatened species | – | |
| 10.4 Assessment of the effectiveness of Management Plans (MPs) for huntable species in non-Secure status | – | |
| 10.5 Sources of further information | – | |

11. INFORMATION RELATED TO ANNEX II SPECIES OF DIRECTIVE 2009/147/EC

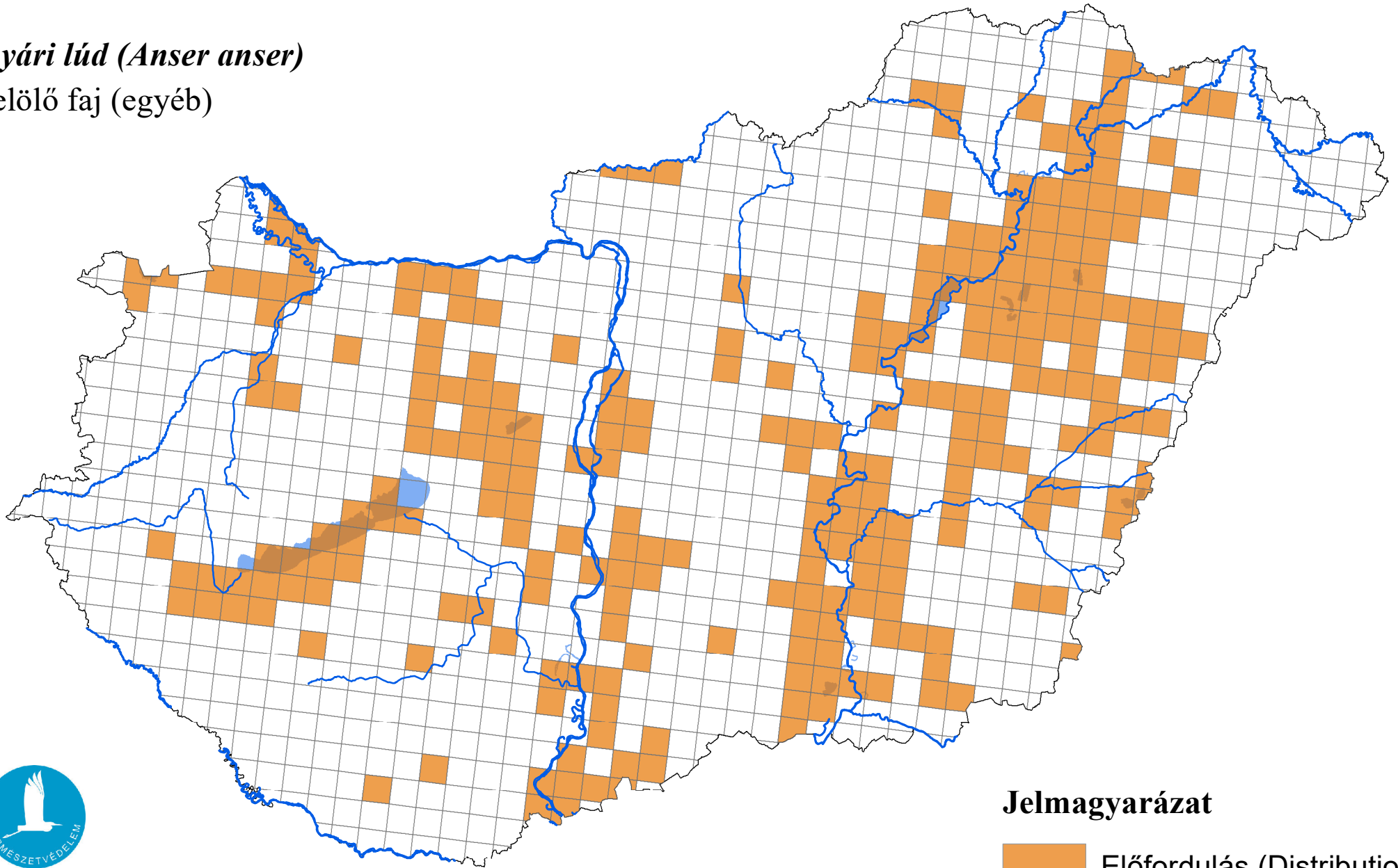
| | | |
|--|----------------------|-------------|
| 11.1 Is the species nationally hunted? | Yes | |
| 11.2 Hunting bag | a) Unit | Individuals |
| | b) Season (optional) | – |

| | | | | | | | |
|--|---|--|-------------------|-------------------|-------------------|-------------------|-------------------|
| | c) Statistics / numbers (in individuals) | <i>Provide statistics per hunting season or per year (where season is not used) over the reporting period.</i> | | | | | |
| | | Season/ year 1 | Season/ year 2 | Season/ year 3 | Season/ year 4 | Season/ year 5 | Season/ year 6 |
| | Min. (raw, i.e. not rounded) | 2502 | 2352 | 1779 | 4383 | 4193 | 4854 |
| | Max. (raw, i.e. not rounded) | 2502 | 2352 | 1779 | 4383 | 4193 | 4854 |
| | Unknown | – | – | – | – | – | – |
| 11.3 Hunting bag Method used | Complete survey or a statistically robust estimate | | | | | | |
| 11.4 Additional information Optional | Csányi S., Márton M., Bóti Sz. és Schally G. 2024. Vadgazdálkodási Adattár - 2023/2024. vadászati év. MATE VTI, Országos Vadgazdálkodási Adattár, Gödöllő, 70 pp. http://www.ova.info.hu/vg_stat/VA-2023-2024.pdf | | | | | | |

A madárvédelmi irányelv 12. cikke alapján készített országjelentés, 2025

nyári lúd (Anser anser)

jelölő faj (egyéb)



Forrás: Agrárminisztérium,
Természetmegőrzési Főosztály

Jelmagyarázat

