

## PART B - BIRD SPECIES' STATUS AND TRENDS REPORT FORMAT

### 1. SPECIES INFORMATION

1.1 Member State	HU
1.2 Species code	A029
1.3 EURING code	1240
1.4 Species scientific name	<i>Ardea purpurea</i>
1.5 Subspecific population	
1.6 Alternative species scientific name (Optional)	
1.7 Common name (Optional)	

### 2. SEASON

2.1 Season	Breeding
2.2 First time reporting	No
2.3 Additional information	

### 3. POPULATION SIZE

3.1 Year or period	2019-2024	
3.2 Population size	a) Unit	number of pairs
	b) Minimum	694
	c) Maximum	958
	d) Best single value	–
3.3 Type of estimate	Best estimate	
3.4 Population size Method used	Complete survey or a statistically robust estimate	
3.5 Sources	National park directorates' databases (Annual survey of colonially breeding and strictly protected bird species)	
3.6 Change and reason for change (since previous report)	Is there a change between reporting periods? no, there is no change	
	The change is mainly due to:	
3.7 Additional information (Optional)		

### 4. POPULATION TREND

4.1 Short-term trend (last 12 years)

4.1.1 Short-term trend Period	2013-2024	
4.1.2 Short-term trend Direction	unknown	
4.1.3 Short-term trend Magnitude	a) Minimum	–
	b) Maximum	–
	c) Best single value	–
4.1.4 Short-term trend Method used	Insufficient or no data available	
4.1.5 Sources	Expert opinions	
<b>4.2 Long-term trend (since ca. 1980)</b>		
4.2.1 Long-term trend Period	1980-2024	
4.2.2 Long-term trend Direction	fluctuating	
4.2.3 Long-term trend Magnitude	a) Minimum	–
	b) Maximum	–
	c) Best single value	–
4.2.4 Long-term trend Method used	Based mainly on extrapolation from a limited amount of data	
4.2.5 Sources	Tucker, G. M. – Heath, M. F. (1994): Birds in Europe – Their Conservation Status. RSPB, BirdLife International; Szép et. al (2022): Bird Atlas of Hungary ( <a href="https://mme.hu/madaratlasz">https://mme.hu/madaratlasz</a> )	
4.3 Additional information (Optional)		

## 5. BREEDING DISTRIBUTION MAP AND SIZE

5.1 Sensitive species	No
5.2 Year or period	2019-2024
5.3 Breeding distribution map	Yes
5.4 Breeding distribution size	12821
5.5 Breeding distribution Method used	Based mainly on extrapolation from a limited amount of data
5.6 Additional maps Optional	No
5.7 Sources	MME's bird atlas database ( <a href="https://map.mme.hu">https://map.mme.hu</a> ) - only confirmed breedings
5.8 Additional information Optional	

## 6. BREEDING DISTRIBUTION TREND

### 6.1 Short-term trend (last 12 years)

6.1.1 Short-term trend Period	2013-2024	
6.1.2 Short-term trend Direction	stable	
6.1.3 Short-term trend Magnitude	a) Minimum	–
	b) Maximum	–
	c) Best single value	–
6.1.4 Short-term trend Method used	Based mainly on extrapolation from a limited amount of data	
6.1.5 Sources	MME/BirdLife Hungary's Bird Atlas database, Szép et. al (2022): Bird Atlas of Hungary ( <a href="https://mme.hu/madaratlasz">https://mme.hu/madaratlasz</a> )	
6.2 Long-term trend (since ca. 1980)		
6.2.1 Long-term trend Period	1980-2024	
6.2.2 Long-term trend Direction	stable	
6.2.3 Long-term trend Magnitude	a) Minimum	–
	b) Maximum	–
	c) Best single value	–
6.2.4 Long-term trend Method used	Based mainly on expert opinion with very limited data	
6.2.5 Sources	Haraszthy L. (szerk.) (1984): Magyarország fészkelő madarai. Natura, Budapest.; Szép et. al (2022): Bird Atlas of Hungary ( <a href="https://mme.hu/madaratlasz">https://mme.hu/madaratlasz</a> )	
6.3 Additional information Optional		

## 7. MAIN PRESSURES AND THREATS

### 7.1 Characterisation of pressures

Pressure	Timing	Scope (proportion of population affected)	Influence (on population or habitat of the species)	Location (where the pressure is primarily operating)	Invasive alien species of Union concern	Other invasive alien species
<b>PA22</b>	ongoing and likely to be in the future	minority <50%	Medium influence	inside the Member State		
<b>PG10</b>	ongoing and likely to be in the future	minority <50%	Medium influence	inside the Member State		
<b>PG17</b>	ongoing and likely to be in the future	minority <50%	High influence	inside the Member State		
<b>PH04</b>	ongoing and likely to be in the future	minority <50%	Medium influence	inside the Member State		
<b>PI03</b>	ongoing and likely to be in the future	majority 50 – 90%	High influence	inside the Member State		
<b>PJ03</b>	ongoing and likely to be in the future	whole >90%	High influence	inside the Member State		

7.2 Methods used (Optional)	Complete survey or a statistically robust estimate
7.3 Sources of information (Optional)	Szép et. al (2022): Bird Atlas of Hungary ( <a href="https://mme.hu/madaratlasz">https://mme.hu/madaratlasz</a> )
7.4 Additional information (Optional)	

## 8. CONSERVATION MEASURES

8.1 Status of measures	<p>Are measures needed?</p> <p>Yes</p> <p>Status of measures:</p> <p>Most/all of measures identified have been taken</p>
8.2 Scope of measures taken	majority 50 - 90%
8.3 Main purpose of the measures taken	<p>A. Indicate the main purpose(s) of measures taken:</p> <p>Restore habitat of the species</p> <p>B. The main (primary) purpose:</p> <p>Restore habitat of the species</p>
8.4 Location of the measures	Both inside and outside Natura 2000
8.5 Response to the measures (when the measures start to neutralize the pressure(s) and produce positive effects)	Medium-term response (within the next two reporting periods)
8.6 List of main conservation measures	<p>MA05</p> <p>MA13</p> <p>MG10</p> <p>MI05</p> <p>MK03</p> <p>MS03</p>
8.7 Additional information Optional	Haraszthy L. (szerk.) (2014): Natura 2000 fajok és élőhelyek Magyarországon. Pro Vértes Közalapítvány, Csákvár. p. 522-524.

## 9. NATURA 2000 (SPECIAL PROTECTION AREAS (SPAs)) COVERAGE

9.1 Population size inside the Natura 2000 (Special Protection Area (SPA)) network (on national level including all sites where the species is present)	a) Unit	number of pairs
	b) Minimum	400
	c) Maximum	700
	d) Best single value	–
9.2 Type of estimate	95% confidence interval	
9.3 Population size inside the network Method used	Complete survey or a statistically robust estimate	
9.4 Short-term trend of population size within the network Direction	stable	

9.5 Short-term trend of population size within the network Method used	Complete survey or a statistically robust estimate
9.6 Additional information (Optional)	The population estimate follows the Art 12. report for the years 2013-2018. The coverage of SPAs is 63%.

## 10. PROGRESS IN WORK RELATED TO INTERNATIONAL SPECIES ACTION PLANS (SAPs), MANAGEMENT PLANS (MPs) AND BRIEF MANAGEMENT STATEMENTS (BMSSs)

10.1 Type of international plan	–
10.2 Has a national plan linked to the international Species Action Plan (SAP) / Management Plan (MP) / Brief Management Statement (BMS) been adopted?	–
10.3 Assessment of the effectiveness of Species Action Plans (SAPs) for globally threatened species	–
10.4 Assessment of the effectiveness of Management Plans (MPs) for huntable species in non-Secure status	–
10.5 Sources of further information	–

## 11. INFORMATION RELATED TO ANNEX II SPECIES OF DIRECTIVE 2009/147/EC

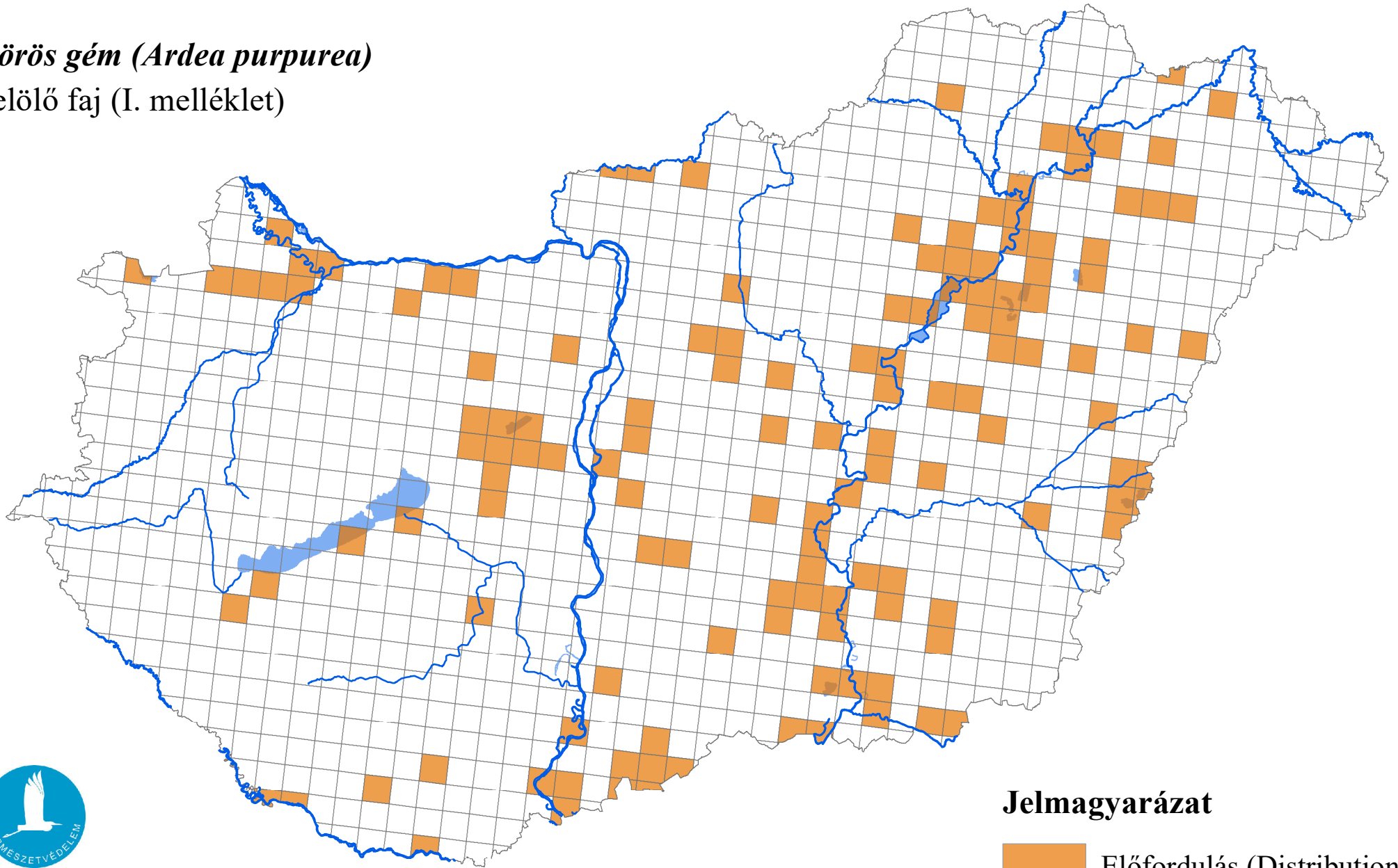
11.1 Is the species nationally hunted?	–						
11.2 Hunting bag	a) Unit	–					
	b) Season (optional)	–					
	c) Statistics / numbers (in individuals )	<i>Provide statistics per hunting season or per year (where season is not used) over the reporting period.</i>					
		Season/ year 1	Season/ year 2	Season/ year 3	Season/ year 4	Season/ year 5	Season/ year 6
	Min. (raw, i.e. not rounded)	–	–	–	–	–	–
	Max. (raw, i.e. not rounded)						
	Unknown	–	–	–	–	–	–
11.3 Hunting bag Method used	–						

11.4 Additional  
information  
Optional

# A madárvédelmi irányelv 12. cikke alapján készített országjelentés, 2025


*vörös gém (Ardea purpurea)*

jelölő faj (I. melléklet)



Forrás: Agrárminisztérium,  
Természetmegőrzési Főosztály

## Jelmagyarázat

 Előfordulás (Distribution)

0 25 50 Kilometers  
