

PART B - BIRD SPECIES' STATUS AND TRENDS REPORT FORMAT

1. SPECIES INFORMATION	
1.1 Member State	HU
1.2 Species code	A021
1.3 EURING code	950
1.4 Species scientific name	<i>Botaurus stellaris</i>
1.5 Subspecific population	
1.6 Alternative species scientific name (Optional)	
1.7 Common name (Optional)	

2. SEASON	
2.1 Season	Breeding
2.2 First time reporting	No
2.3 Additional information	

3. POPULATION SIZE		
3.1 Year or period	2019-2024	
3.2 Population size	a) Unit	number of calling males
	b) Minimum	400
	c) Maximum	800
	d) Best single value	–
3.3 Type of estimate	Best estimate	
3.4 Population size Method used	Based mainly on extrapolation from a limited amount of data	
3.5 Sources	Szép et. al (2022): Bird Atlas of Hungary (https://mme.hu/madaratlasz), corrigated by data of Common Breeding Bird Survey (https://mmm.mme.hu)	
3.6 Change and reason for change (since previous report)	Is there a change between reporting periods? yes, due to the use of different method	
	The change is mainly due to: the use of different method	
3.7 Additional information (Optional)		

4. POPULATION TREND

4.1 Short-term trend (last 12 years)

4.1.1 Short-term trend Period	2013-2024	
4.1.2 Short-term trend Direction	decreasing	
4.1.3 Short-term trend Magnitude	a) Minimum	–
	b) Maximum	–
	c) Best single value	-80
4.1.4 Short-term trend Method used	Based mainly on expert opinion with very limited data	
4.1.5 Sources	Expert opinions	

4.2 Long-term trend (since ca. 1980)

4.2.1 Long-term trend Period	1980-2024	
4.2.2 Long-term trend Direction	decreasing	
4.2.3 Long-term trend Magnitude	a) Minimum	-97
	b) Maximum	-61
	c) Best single value	–
4.2.4 Long-term trend Method used	Based mainly on expert opinion with very limited data	
4.2.5 Sources	Haraszthy L. (szerk.) (1984): Magyarország fészkelő madarai. Natura, Budapest. (2nd edition: 1998); Szép et. al (2022): Bird Atlas of Hungary (https://mme.hu/madaratlasz)	
4.3 Additional information (Optional)	Probably decreased, but has no reliable archive data.	

5. BREEDING DISTRIBUTION MAP AND SIZE

5.1 Sensitive species	No
5.2 Year or period	2019-2024
5.3 Breeding distribution map	Yes
5.4 Breeding distribution size	22593
5.5 Breeding distribution Method used	Based mainly on extrapolation from a limited amount of data
5.6 Additional maps Optional	No
5.7 Sources	MME's Bird Atlas Database (https://map.mme.hu) - all breeding probabilities
5.8 Additional information Optional	

6. BREEDING DISTRIBUTION TREND

6.1 Short-term trend (last 12 years)

6.1.1 Short-term trend Period	2013-2024	
6.1.2 Short-term trend Direction	decreasing	
6.1.3 Short-term trend Magnitude	a) Minimum	–
	b) Maximum	–
	c) Best single value	-15
6.1.4 Short-term trend Method used	Based mainly on extrapolation from a limited amount of data	
6.1.5 Sources	MME/BirdLife Hungary's Bird Atlas database, Szép et. al (2022): Bird Atlas of Hungary (https://mme.hu/madaratlasz)	
6.2 Long-term trend (since ca. 1980)		
6.2.1 Long-term trend Period	1980-2024	
6.2.2 Long-term trend Direction	decreasing	
6.2.3 Long-term trend Magnitude	a) Minimum	–
	b) Maximum	–
	c) Best single value	-30
6.2.4 Long-term trend Method used	Based mainly on expert opinion with very limited data	
6.2.5 Sources	Haraszthy L. (szerk.) (1984): Magyarország fészkelő madarai. Natura, Budapest.; Szép et. al (2022): Bird Atlas of Hungary (https://mme.hu/madaratlasz)	
6.3 Additional information Optional		

7. MAIN PRESSURES AND THREATS

7.1 Characterisation of pressures

Pressure	Timing	Scope (proportion of population affected)	Influence (on population or habitat of the species)	Location (where the pressure is primarily operating)	Invasive alien species of Union concern	Other invasive alien species
PA22	ongoing and likely to be in the future	minority <50%	High influence	inside the Member State		
PD06	ongoing and likely to be in the future	minority <50%	Medium influence	inside the Member State		
PG10	ongoing and likely to be in the future	minority <50%	Medium influence	inside the Member State		
PG17	ongoing and likely to be in the future	minority <50%	High influence	inside the Member State		

PH04	ongoing and likely to be in the future	minority <50%	Medium influence	inside the Member State		
PI03	ongoing and likely to be in the future	majority 50 – 90%	Medium influence	inside the Member State		
PJ03	ongoing and likely to be in the future	majority 50 – 90%	High influence	inside the Member State		
7.2 Methods used (Optional)		Based mainly on extrapolation from a limited amount of data				
7.3 Sources of information (Optional)		Szép et. al (2022): Bird Atlas of Hungary (https://mme.hu/madaratlasz)				
7.4 Additional information (Optional)						

8. CONSERVATION MEASURES

8.1 Status of measures	<p>Are measures needed?</p> <p>Yes</p> <p>Status of measures:</p> <p>Part of measures identified have been taken</p>
8.2 Scope of measures taken	majority 50 - 90%
8.3 Main purpose of the measures taken	<p>A. Indicate the main purpose(s) of measures taken:</p> <p>Restore habitat of the species</p> <p>B. The main (primary) purpose:</p> <p>Restore habitat of the species</p>
8.4 Location of the measures	Both inside and outside Natura 2000
8.5 Response to the measures (when the measures start to neutralize the pressure(s) and produce positive effects)	Medium-term response (within the next two reporting periods)
8.6 List of main conservation measures	MA03 MA05 MA13 MG10 MI05 MK03
8.7 Additional information Optional	Szép T. et al. (szerk.) 2022. Magyarország madáratlasza. 2., javított és kiegészített kiadás. – Agrárminisztérium, MME, Budapest. madaratlasz.mme.hu

9. NATURA 2000 (SPECIAL PROTECTION AREAS (SPAS)) COVERAGE

9.1 Population size inside the Natura 2000 (Special Protection Area (SPA)) network (on national level including all sites where the species is present)	a) Unit	number of calling males
	b) Minimum	300
	c) Maximum	700
	d) Best single value	–

9.2 Type of estimate	Best estimate
9.3 Population size inside the network Method used	Based mainly on extrapolation from a limited amount of data
9.4 Short-term trend of population size within the network Direction	decreasing
9.5 Short-term trend of population size within the network Method used	Based mainly on extrapolation from a limited amount of data
9.6 Additional information (Optional)	The population size was calculated using the coverage rate (based on maximum detected specimen/UTM squares, in the MAP database of the BirdLife Hungary), based on the national population. The coverage of SPAs is 88%.

10. PROGRESS IN WORK RELATED TO INTERNATIONAL SPECIES ACTION PLANS (SAPs), MANAGEMENT PLANS (MPs) AND BRIEF MANAGEMENT STATEMENTS (BMSS)

10.1 Type of international plan	Species action plan
10.2 Has a national plan linked to the international Species Action Plan (SAP) / Management Plan (MP) / Brief Management Statement (BMS) been adopted?	No
10.3 Assessment of the effectiveness of Species Action Plans (SAPs) for globally threatened species	further deteriorating
10.4 Assessment of the effectiveness of Management Plans (MPs) for huntable species in non-Secure status	–
10.5 Sources of further information	–

11. INFORMATION RELATED TO ANNEX II SPECIES OF DIRECTIVE 2009/147/EC

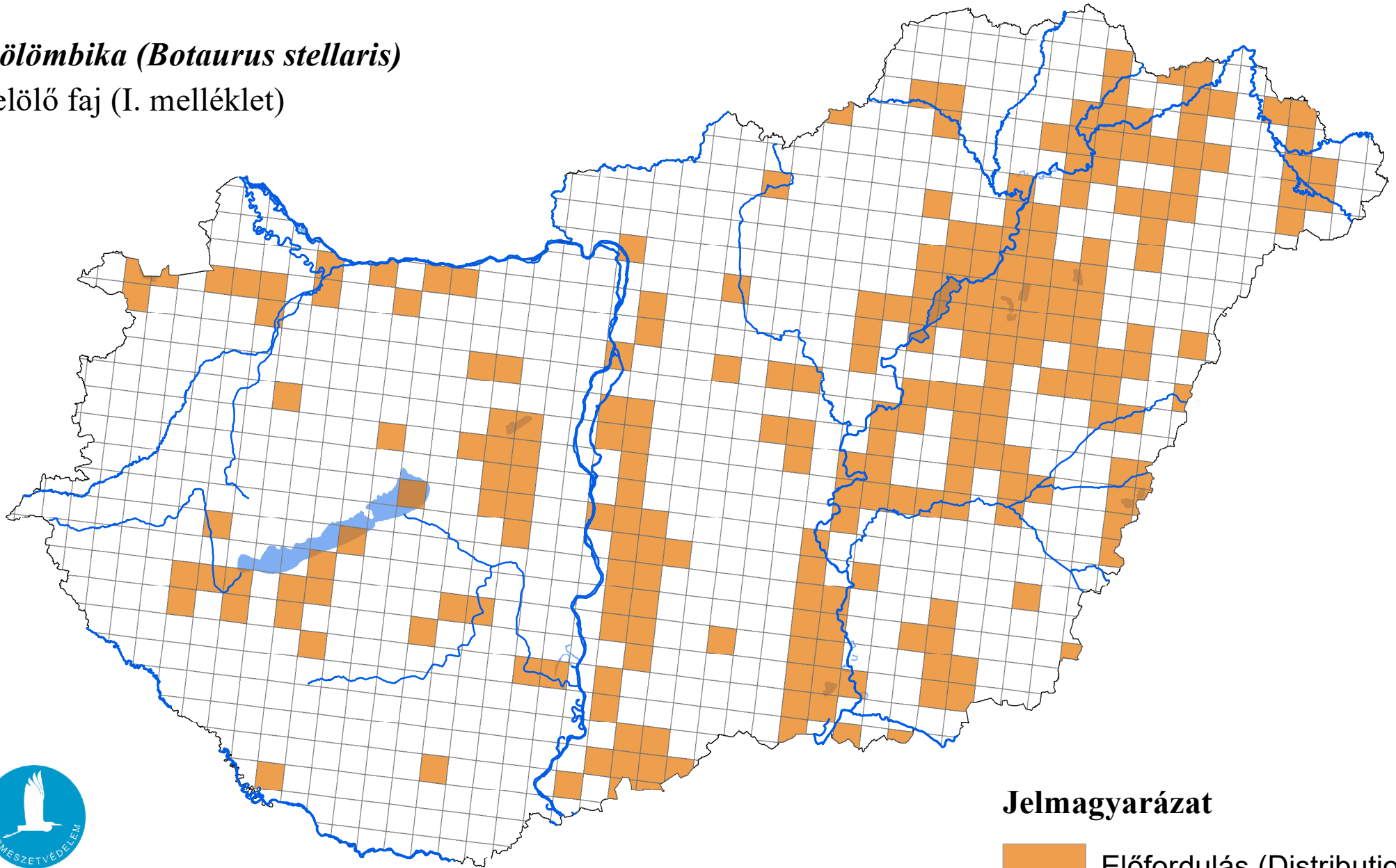
11.1 Is the species nationally hunted?	–					
11.2 Hunting bag	a) Unit	–				
	b) Season (optional)	–				
	c) Statistics / numbers (in individuals)	<i>Provide statistics per hunting season or per year (where season is not used) over the reporting period.</i>				
		Season/ year 1	Season/ year 2	Season/ year 3	Season/ year 4	Season/ year 5

	Min. (raw, i.e. not rounded)	–	–	–	–	–	–
	Max. (raw, i.e. not rounded)						
	Unknown	–	–	–	–	–	–
11.3 Hunting bag Method used	–						
11.4 Additional information Optional							

A madárvédelmi irányelv 12. cikke alapján készített országjelentés, 2025

bölobika (Botaurus stellaris)

jelölő faj (I. melléklet)



Forrás: Agrárminisztérium,
Természetmegőrzési Főosztály

Jelmagyarázat

