

## PART B - BIRD SPECIES' STATUS AND TRENDS REPORT FORMAT

### 1. SPECIES INFORMATION

1.1 Member State	HU
1.2 Species code	A224
1.3 EURING code	7780
1.4 Species scientific name	<i>Caprimulgus europaeus</i>
1.5 Subspecific population	
1.6 Alternative species scientific name (Optional)	
1.7 Common name (Optional)	

### 2. SEASON

2.1 Season	Breeding
2.2 First time reporting	No
2.3 Additional information	

### 3. POPULATION SIZE

3.1 Year or period	2019-2024	
3.2 Population size	a) Unit	number of calling males
	b) Minimum	3700
	c) Maximum	9500
	d) Best single value	–
3.3 Type of estimate	Best estimate	
3.4 Population size Method used	Based mainly on extrapolation from a limited amount of data	
3.5 Sources	Szép et. al (2022): Bird Atlas of Hungary ( <a href="https://mme.hu/madaratlasz">https://mme.hu/madaratlasz</a> )	
3.6 Change and reason for change (since previous report)	Is there a change between reporting periods? yes, due to the use of different method	
	The change is mainly due to: the use of different method	
3.7 Additional information (Optional)		

### 4. POPULATION TREND

4.1 Short-term trend (last 12 years)

4.1.1 Short-term trend Period	2013-2024	
4.1.2 Short-term trend Direction	stable	
4.1.3 Short-term trend Magnitude	a) Minimum	–
	b) Maximum	–
	c) Best single value	–
4.1.4 Short-term trend Method used	Based mainly on expert opinion with very limited data	
4.1.5 Sources	Expert opinions	
<b>4.2 Long-term trend (since ca. 1980)</b>		
4.2.1 Long-term trend Period	1980-2024	
4.2.2 Long-term trend Direction	stable	
4.2.3 Long-term trend Magnitude	a) Minimum	–
	b) Maximum	–
	c) Best single value	–
4.2.4 Long-term trend Method used	Based mainly on expert opinion with very limited data	
4.2.5 Sources	Haraszthy L. (szerk.) (1984): Magyarország fészkelő madarai. Natura, Budapest. (2nd edition: 1998); Szép et. al (2022): Bird Atlas of Hungary ( <a href="https://mme.hu/madaratlasz">https://mme.hu/madaratlasz</a> )	
4.3 Additional information (Optional)		

## 5. BREEDING DISTRIBUTION MAP AND SIZE

5.1 Sensitive species	No
5.2 Year or period	2019-2024
5.3 Breeding distribution map	Yes
5.4 Breeding distribution size	31741
5.5 Breeding distribution Method used	Based mainly on extrapolation from a limited amount of data
5.6 Additional maps Optional	No
5.7 Sources	MME's Bird Atlas Database ( <a href="https://map.mme.hu">https://map.mme.hu</a> ) + Bird Atlas of Hungary modelled map
5.8 Additional information Optional	

## 6. BREEDING DISTRIBUTION TREND

6.1 Short-term trend (last 12 years)

6.1.1 Short-term trend Period	2013-2024	
6.1.2 Short-term trend Direction	stable	
6.1.3 Short-term trend Magnitude	a) Minimum	–
	b) Maximum	–
	c) Best single value	–
6.1.4 Short-term trend Method used	Based mainly on extrapolation from a limited amount of data	
6.1.5 Sources	MME/BirdLife Hungary's Bird Atlas database, Szép et. al (2022): Bird Atlas of Hungary ( <a href="https://mme.hu/madaratlasz">https://mme.hu/madaratlasz</a> )	
6.2 Long-term trend (since ca. 1980)		
6.2.1 Long-term trend Period	1980-2024	
6.2.2 Long-term trend Direction	unknown	
6.2.3 Long-term trend Magnitude	a) Minimum	–
	b) Maximum	–
	c) Best single value	–
6.2.4 Long-term trend Method used	Insufficient or no data available	
6.2.5 Sources	Haraszthy L. (szerk.) (1984): Magyarország fészkelő madarai. Natura, Budapest.; Szép et. al (2022): Bird Atlas of Hungary ( <a href="https://mme.hu/madaratlasz">https://mme.hu/madaratlasz</a> )	
6.3 Additional information Optional		

## 7. MAIN PRESSURES AND THREATS

### 7.1 Characterisation of pressures

Pressure	Timing	Scope (proportion of population affected)	Influence (on population or habitat of the species)	Location (where the pressure is primarily operating)	Invasive alien species of Union concern	Other invasive alien species
<b>PA01</b>	in the past but now suspended due to measures	–	–	inside the Member State		
<b>PA14</b>	ongoing and likely to be in the future	minority <50%	Medium influence	inside the Member State		
<b>PB01</b>	ongoing and likely to be in the future	minority <50%	Medium influence	inside the Member State		
<b>PB02</b>	ongoing and likely to be in the future	minority <50%	Medium influence	inside the Member State		
<b>PB04</b>	ongoing and likely to be in the future	minority <50%	Medium influence	inside the Member State		
<b>PB09</b>	ongoing and likely to be in the future	minority <50%	Medium influence	inside the Member State		

<b>PB12</b>	ongoing and likely to be in the future	majority 50 – 90%	Medium influence	inside the Member State		
<b>PB17</b>	ongoing and likely to be in the future	minority <50%	Medium influence	inside the Member State		
<b>PI02</b>	ongoing and likely to be in the future	minority <50%	Medium influence	inside the Member State		
7.2 Methods used (Optional)		Based mainly on extrapolation from a limited amount of data				
7.3 Sources of information (Optional)		Szép et. al (2022): Bird Atlas of Hungary ( <a href="https://mme.hu/madaratlasz">https://mme.hu/madaratlasz</a> )				
7.4 Additional information (Optional)						

## 8. CONSERVATION MEASURES

8.1 Status of measures	<p>Are measures needed?</p> <p>Yes</p> <p>Status of measures:</p> <p>Most/all of measures identified have been taken</p>
8.2 Scope of measures taken	majority 50 - 90%
8.3 Main purpose of the measures taken	A. Indicate the main purpose(s) of measures taken: Maintain current distribution, population and/or habitat for the species
	B. The main (primary) purpose: Maintain current distribution, population and/or habitat for the species
8.4 Location of the measures	Both inside and outside Natura 2000
8.5 Response to the measures (when the measures start to neutralize the pressure(s) and produce positive effects)	Long-term response
8.6 List of main conservation measures	MA01 MA09 MB01 MB04 MB05 MB09 MI03
8.7 Additional information Optional	Szép T. et al. (szerk.) 2022. Magyarország madáratlasza. 2., javított és kiegészített kiadás. – Agrárminisztérium, MME, Budapest. <a href="http://madaratlasz.mme.hu">madaratlasz.mme.hu</a>

## 9. NATURA 2000 (SPECIAL PROTECTION AREAS (SPAs)) COVERAGE

9.1 Population size inside the Natura 2000 (Special Protection Area (SPA)) network (on national level including	a) Unit	number of calling males
	b) Minimum	1500
	c) Maximum	4000

all sites where the species is present)	d) Best single value	–
9.2 Type of estimate	Best estimate	
9.3 Population size inside the network Method used	Based mainly on expert opinion with very limited data	
9.4 Short-term trend of population size within the network Direction	stable	
9.5 Short-term trend of population size within the network Method used	Based mainly on expert opinion with very limited data	
9.6 Additional information (Optional)	The population size was calculated using the coverage rate (proportion of SPA areas in UTM squares where the species breeds, based on the BirdLife Hungary MAP database), based on the national population. The coverage of SPAs is 42%.	

## 10. PROGRESS IN WORK RELATED TO INTERNATIONAL SPECIES ACTION PLANS (SAPs), MANAGEMENT PLANS (MPs) AND BRIEF MANAGEMENT STATEMENTS (BMSS)

10.1 Type of international plan	–	
10.2 Has a national plan linked to the international Species Action Plan (SAP) / Management Plan (MP) / Brief Management Statement (BMS) been adopted?	–	
10.3 Assessment of the effectiveness of Species Action Plans (SAPs) for globally threatened species	–	
10.4 Assessment of the effectiveness of Management Plans (MPs) for huntable species in non-Secure status	–	
10.5 Sources of further information	–	

## 11. INFORMATION RELATED TO ANNEX II SPECIES OF DIRECTIVE 2009/147/EC

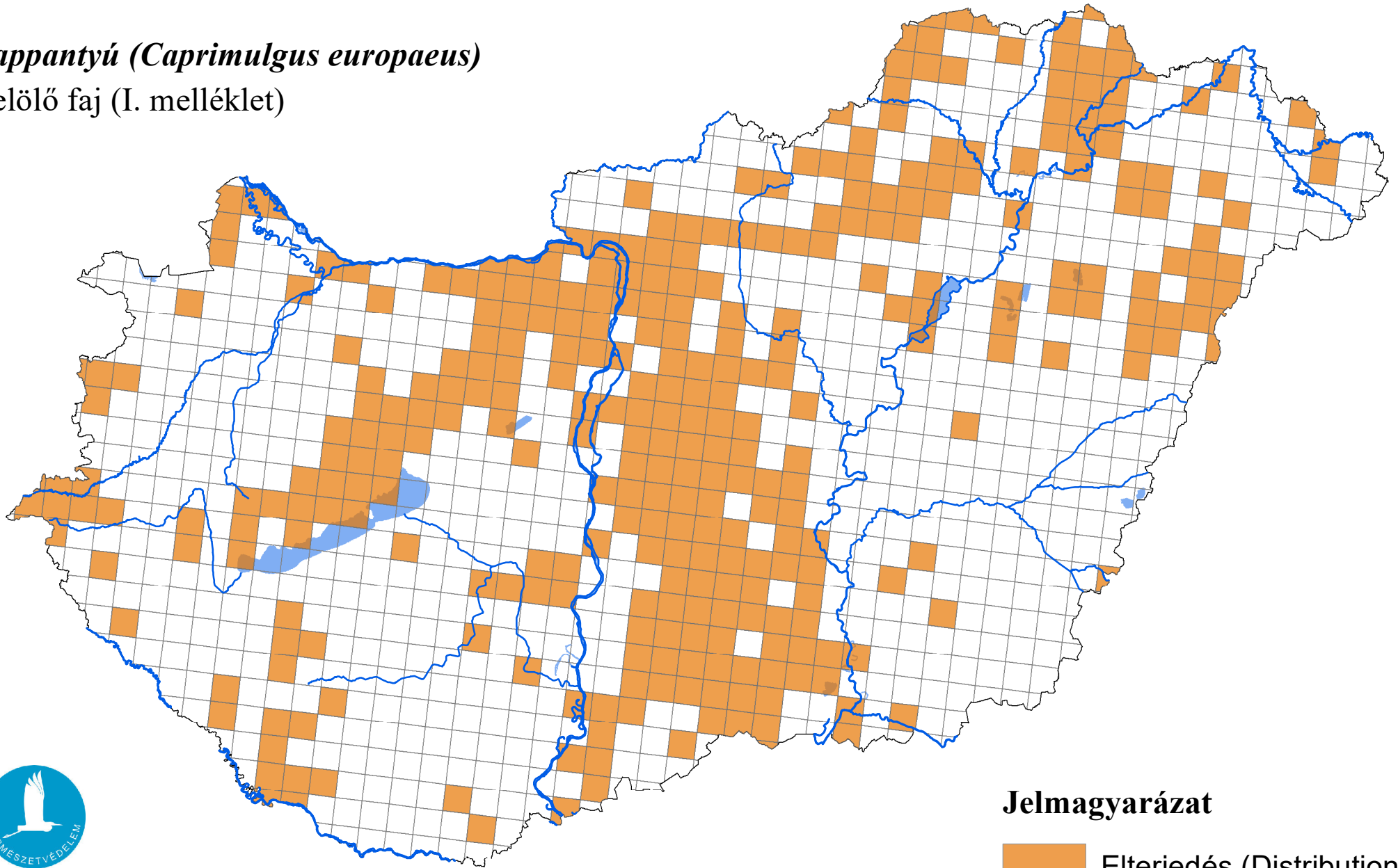
11.1 Is the species nationally hunted?	–	
11.2 Hunting bag	a) Unit	–
	b) Season (optional)	–
	c) Statistics /	<i>Provide statistics per hunting season or per year (where season is not used) over the reporting period.</i>

	numbers (in individuals )	Season/ year 1	Season/ year 2	Season/ year 3	Season/ year 4	Season/ year 5	Season/ year 6
	Min. (raw, i.e. not rounded)	–	–	–	–	–	–
	Max. (raw, i.e. not rounded)						
	Unknown	–	–	–	–	–	–
11.3 Hunting bag Method used	–						
11.4 Additional information Optional							

# A madárvédelmi irányelv 12. cikke alapján készített országjelentés, 2025

*lappantyú (Caprimulgus europaeus)*

jelölő faj (I. melléklet)



Forrás: Agrárminisztérium,  
Természetmegőrzési Főosztály

## Jelmagyarázat

 Elterjedés (Distribution)

0 25 50 Kilometers  
