

## PART B - BIRD SPECIES' STATUS AND TRENDS REPORT FORMAT

### 1. SPECIES INFORMATION

1.1 Member State	HU
1.2 Species code	A231
1.3 EURING code	8410
1.4 Species scientific name	<i>Coracias garrulus</i>
1.5 Subspecific population	
1.6 Alternative species scientific name (Optional)	
1.7 Common name (Optional)	

### 2. SEASON

2.1 Season	Breeding
2.2 First time reporting	No
2.3 Additional information	

### 3. POPULATION SIZE

3.1 Year or period	2019-2024	
3.2 Population size	a) Unit	number of pairs
	b) Minimum	3100
	c) Maximum	3500
	d) Best single value	–
3.3 Type of estimate	Best estimate	
3.4 Population size Method used	Based mainly on extrapolation from a limited amount of data	
3.5 Sources	Data from species protection programme	
3.6 Change and reason for change (since previous report)	Is there a change between reporting periods? yes, due to genuine change	
	The change is mainly due to: genuine change	
3.7 Additional information (Optional)		

### 4. POPULATION TREND

4.1 Short-term trend (last 12 years)

4.1.1 Short-term trend Period	2013-2024	
4.1.2 Short-term trend Direction	increasing	
4.1.3 Short-term trend Magnitude	a) Minimum	138
	b) Maximum	734
	c) Best single value	258.7
4.1.4 Short-term trend Method used	Based mainly on extrapolation from a limited amount of data	
4.1.5 Sources	Common bird monitoring scheme (MMM) database ( <a href="https://mmm.mme.hu">https://mmm.mme.hu</a> ).	
<b>4.2 Long-term trend (since ca. 1980)</b>		
4.2.1 Long-term trend Period	1980-2024	
4.2.2 Long-term trend Direction	increasing	
4.2.3 Long-term trend Magnitude	a) Minimum	480
	b) Maximum	930
	c) Best single value	–
4.2.4 Long-term trend Method used	Complete survey or a statistically robust estimate	
4.2.5 Sources	Haraszthy L. (szerk.) (1984): Magyarország fészkelő madarai. Natura, Budapest. (2nd edition: 1998); Szép et. al (2022): Bird Atlas of Hungary ( <a href="https://mme.hu/madaratlasz">https://mme.hu/madaratlasz</a> )	
4.3 Additional information (Optional)		

## 5. BREEDING DISTRIBUTION MAP AND SIZE

5.1 Sensitive species	No
5.2 Year or period	2019-2024
5.3 Breeding distribution map	Yes
5.4 Breeding distribution size	34308
5.5 Breeding distribution Method used	Complete survey or a statistically robust estimate
5.6 Additional maps Optional	No
5.7 Sources	MME's Bird Atlas Database ( <a href="https://map.mme.hu">https://map.mme.hu</a> ) - probably and conformed breedings
5.8 Additional information Optional	

## 6. BREEDING DISTRIBUTION TREND

### 6.1 Short-term trend (last 12 years)

6.1.1 Short-term trend Period	2013-2024	
6.1.2 Short-term trend Direction	increasing	
6.1.3 Short-term trend Magnitude	a) Minimum	–
	b) Maximum	–
	c) Best single value	38
6.1.4 Short-term trend Method used	Based mainly on extrapolation from a limited amount of data	
6.1.5 Sources	MME/BirdLife Hungary's Bird Atlas database, Szép et. al (2022): Bird Atlas of Hungary ( <a href="https://mme.hu/madaratlasz">https://mme.hu/madaratlasz</a> )	
6.2 Long-term trend (since ca. 1980)		
6.2.1 Long-term trend Period	1980-2024	
6.2.2 Long-term trend Direction	increasing	
6.2.3 Long-term trend Magnitude	a) Minimum	–
	b) Maximum	–
	c) Best single value	59
6.2.4 Long-term trend Method used	Based mainly on expert opinion with very limited data	
6.2.5 Sources	Haraszthy L. (szerk.) (1984): Magyarország fészkelő madarai. Natura, Budapest.; Szép et. al (2022): Bird Atlas of Hungary ( <a href="https://mme.hu/madaratlasz">https://mme.hu/madaratlasz</a> )	
6.3 Additional information Optional		

## 7. MAIN PRESSURES AND THREATS

### 7.1 Characterisation of pressures

Pressure	Timing	Scope (proportion of population affected)	Influence (on population or habitat of the species)	Location (where the pressure is primarily operating)	Invasive alien species of Union concern	Other invasive alien species
<b>PA02</b>	ongoing and likely to be in the future	whole >90%	High influence	inside the Member State		
<b>PA03</b>	ongoing and likely to be in the future	minority <50%	High influence	inside the Member State		
<b>PA05</b>	ongoing and likely to be in the future	minority <50%	High influence	inside the Member State		
<b>PB08</b>	ongoing and likely to be in the future	majority 50 – 90%	High influence	inside the Member State		
<b>PD06</b>	ongoing and likely to be in the future	whole >90%	High influence	inside the Member State		
<b>PE01</b>	ongoing and likely to be in the future	majority 50 – 90%	Medium influence	inside the Member State		

<b>PF01</b>	ongoing and likely to be in the future	minority <50%	Medium influence	inside the Member State		
<b>PG11</b>	ongoing and likely to be in the future	whole >90%	Medium influence	outside EU		
7.2 Methods used (Optional)		Complete survey or a statistically robust estimate				
7.3 Sources of information (Optional)		Szép et. al (2022): Bird Atlas of Hungary ( <a href="https://mme.hu/madaratlasz">https://mme.hu/madaratlasz</a> )				
7.4 Additional information (Optional)						

## 8. CONSERVATION MEASURES

8.1 Status of measures	<p>Are measures needed?</p> <p>Yes</p> <p>Status of measures:</p> <p>Most/all of measures identified have been taken</p>
8.2 Scope of measures taken	majority 50 - 90%
8.3 Main purpose of the measures taken	<p>A. Indicate the main purpose(s) of measures taken:</p> <p>Expand distribution of the species</p> <p>B. The main (primary) purpose:</p> <p>Expand distribution of the species</p>
8.4 Location of the measures	Both inside and outside Natura 2000
8.5 Response to the measures (when the measures start to neutralize the pressure(s) and produce positive effects)	Short-term response (within the current reporting period)
8.6 List of main conservation measures	MA01 MA03 MA04 MA05 MA06 MC06 MS03
8.7 Additional information Optional	<a href="http://www.mme.hu/szalakota">http://www.mme.hu/szalakota</a> <a href="http://rollerproject.eu/en/node">http://rollerproject.eu/en/node</a>

## 9. NATURA 2000 (SPECIAL PROTECTION AREAS (SPAs)) COVERAGE

9.1 Population size inside the Natura 2000 (Special Protection Area (SPA)) network (on national level including all sites where the species is present)	a) Unit	number of pairs
	b) Minimum	1860
	c) Maximum	2100
	d) Best single value	–
9.2 Type of estimate	95% confidence interval	

9.3 Population size inside the network Method used	Complete survey or a statistically robust estimate
9.4 Short-term trend of population size within the network Direction	increasing
9.5 Short-term trend of population size within the network Method used	Complete survey or a statistically robust estimate
9.6 Additional information (Optional)	The population size was calculated using the coverage rate (proportion of SPA areas within recorded nests, based on the BirdLife Hungary MAP database), based on the national population. The coverage of SPAs is 60%. Density is higher on SPAs, than outside.

## 10. PROGRESS IN WORK RELATED TO INTERNATIONAL SPECIES ACTION PLANS (SAPs), MANAGEMENT PLANS (MPs) AND BRIEF MANAGEMENT STATEMENTS (BMSS)

10.1 Type of international plan	Species action plan
10.2 Has a national plan linked to the international Species Action Plan (SAP) / Management Plan (MP) / Brief Management Statement (BMS) been adopted?	Yes
10.3 Assessment of the effectiveness of Species Action Plans (SAPs) for globally threatened species	moving towards plan's aim
10.4 Assessment of the effectiveness of Management Plans (MPs) for huntable species in non-Secure status	–
10.5 Sources of further information	<a href="https://termeszetvedelem.hu/fajmegorzesi-tervek-keszítése-es-megvalósítása/">https://termeszetvedelem.hu/fajmegorzesi-tervek-keszítése-es-megvalósítása/</a>

## 11. INFORMATION RELATED TO ANNEX II SPECIES OF DIRECTIVE 2009/147/EC

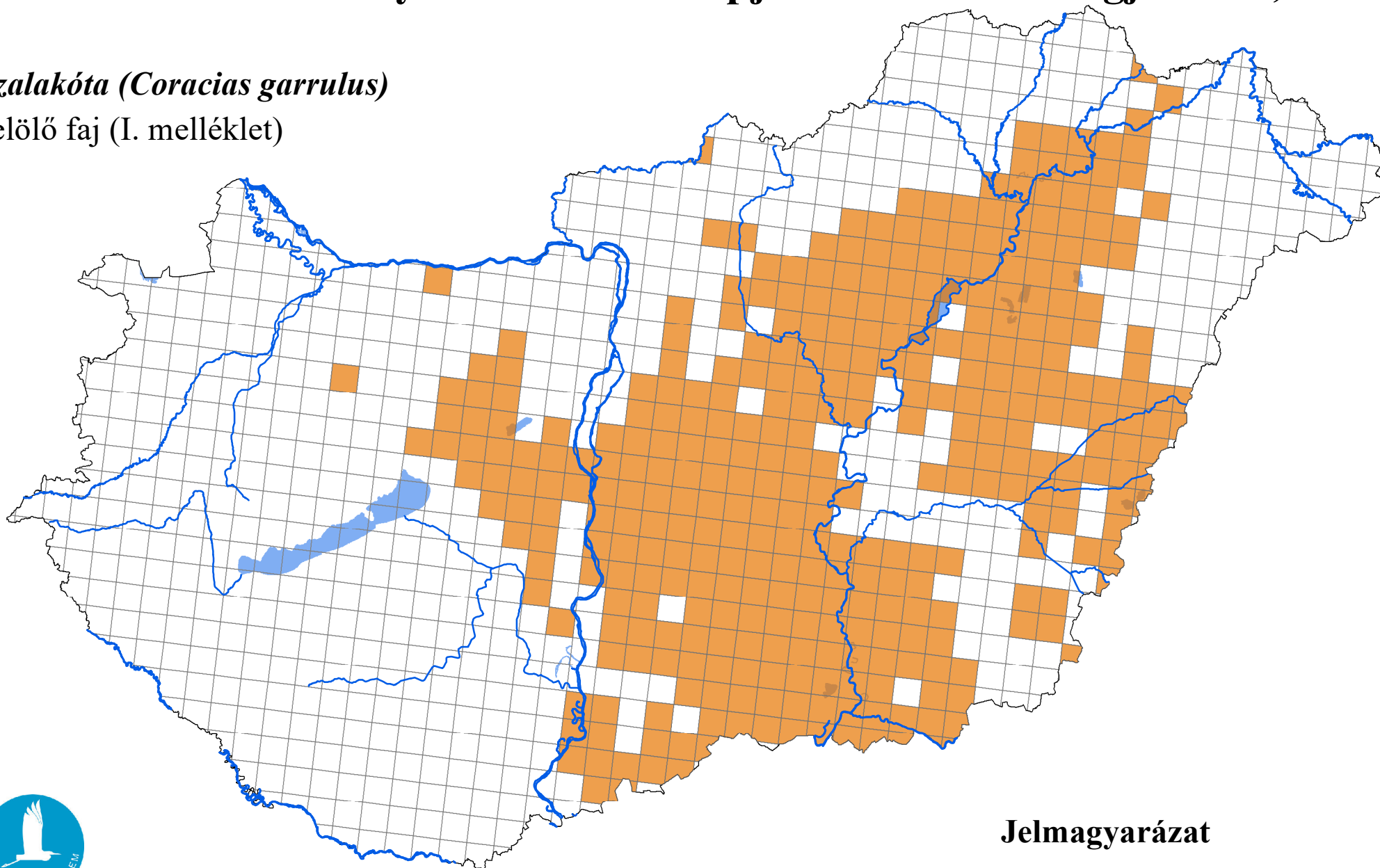
11.1 Is the species nationally hunted?	–						
11.2 Hunting bag	a) Unit	–					
	b) Season (optional)	–					
	c) Statistics / numbers (in individuals)	<i>Provide statistics per hunting season or per year (where season is not used) over the reporting period.</i>					
		<table border="1"> <tr> <td>Season/ year 1</td> <td>Season/ year 2</td> <td>Season/ year 3</td> <td>Season/ year 4</td> <td>Season/ year 5</td> <td>Season/ year 6</td> </tr> </table>	Season/ year 1	Season/ year 2	Season/ year 3	Season/ year 4	Season/ year 5
Season/ year 1	Season/ year 2	Season/ year 3	Season/ year 4	Season/ year 5	Season/ year 6		

	Min. (raw, i.e. not rounded)	–	–	–	–	–	–
	Max. (raw, i.e. not rounded)						
	Unknown	–	–	–	–	–	–
11.3 Hunting bag Method used	–						
11.4 Additional information Optional							

# A madárvédelmi irányelv 12. cikke alapján készített országjelentés, 2025

*szalakóta (Coracias garrulus)*

jelölő faj (I. melléklet)



Forrás: Agrárminisztérium,  
Természetmegőrzési Főosztály

## Jelmagyarázat

 Előfordulás (Distribution)

0 25 50 Kilometers