

REPORT ON THE 'MAIN RESULTS OF THE SURVEILLANCE UNDER ARTICLE 17' FOR ANNEX II, IV AND V SPECIES OF DIRECTIVE 92/43/EEC

NATIONAL LEVEL

1. GENERAL INFORMATION

1.1 Member State	HU
1.2 Species code	4033
1.3 Species scientific name	<i>Erannis ankeraria</i>
1.4 Alternative species scientific name (Optional)	
1.5 Common name (Optional)	Anker-araszoló

2. MAPS

Distribution of the species within the Member State concerned.

2.1 Sensitive species	No
2.2 Year or period	2019–2024
2.3 Distribution map	Yes
2.4 Distribution map Method used	Based mainly on extrapolation from a limited amount of data
2.5 Additional maps (Optional)	–
2.6 Additional information (Optional)	–

3. INFORMATION RELATED TO ANNEX V SPECIES (ART. 14 OF DIRECTIVE 92/43/EEC)

3.1 Is the species taken in the wild/exploited?	No	
3.2 Are measures needed for the species (only for species in favourable conservation status)?	No	
3.3 Which of the measures in Art. 14 have been taken?	a) regulations regarding access to property	–
	b) temporary or local prohibition of the taking of specimens in the wild and exploitation	–
	c) regulation of the periods and/or methods of taking specimens	–

	d) application of hunting and fishing rules which take account of the conservation of such populations	–					
	e) establishment of a system of licences for taking specimens or of quotas	–					
	f) regulation of the purchase, sale, offering for sale, keeping for sale or transport for sale of specimens	–					
	g) breeding in captivity of animal species as well as artificial propagation of plant species	–					
	h) other measures, if yes, describe	–					
3.4 Hunting bag or quantity taken in the wild regardless of conservation status - for Mammals and Acipenseridae (Fish)	a) Unit	–					
	b) Statistics/ quantity taken	<i>Provide statistics/quantity taken per hunting season or per year (where season is not used) over the reporting period</i>					
		Season/ year 1	Season/ year 2	Season/ year 3	Season/ year 4	Season/ year 5	Season/ year 6
	Min. (raw, i.e. not rounded)						
	Max. (raw, i.e. not rounded)						
	Unknown	–	–	–	–	–	–
3.5 Hunting bag or quantity taken in the wild Method used	–						
3.6 Additional information (Optional)	–						

BIOGEOGRAPHICAL LEVEL

Complete for each biogeographical region or marine region concerned.

4. BIOGEOGRAPHICAL AND MARINE REGIONS

4.1 Biogeographical or marine region where the species occurs	Pannonian
4.2 First time reporting	No
4.3 Additional information	–
4.4 Sources of information	<ul style="list-style-type: none"> ▪ Korompai T. & Kozma P. (2021): Anker-araszoló (Erannis ankeraria) fajmegőrzési terv – Agrárminisztérium, Budapest, 29 pp. ▪ Korompai T. (2021): A Anker-araszoló (Erannis ankeraria) monitorozása. In: Kemenczei Z. & Patalenszki A. (szerk.): Módszertani kézikönyv a hazánkban előforduló egyes közösségi jelentőségű állatfajok terepi vizsgálatához. – Agrárminisztérium, Budapest, 248-263. pp. „Monitoring reports (2019-2024) of Hungarian Biodiversity Monitoring System.” https://www.izeltlabuak.hu/faj/anker-araszolo licenc: CC BY 4.0

5. RANGE

Range within the biogeographical/marine region concerned.

5.1 Surface area (km ²)	2571	
5.2 Change and reason for change in surface area of range and main reason	Is there a change between reporting periods? no, there is no change	
	The change is mainly due to:	
5.3 Short-term trend Period	2013–2024	
5.4 Short-term trend Direction	stable	
5.5 Short-term trend Magnitude (Optional)	a) Estimated Minimum	–
	b) Estimated Maximum	–
	c) Pre-defined range	–
	d) Unknown	–
5.6. Short-term trend Magnitude Type of estimate (Optional)	–	
5.7 Short-term trend Method used	Based mainly on extrapolation from a limited amount of data	
5.8 Long-term trend Period (Optional)	–	
5.9 Long-term trend Direction (Optional)	–	
5.10 Long-term trend Magnitude (Optional)	a) Minimum	–
	b) Maximum	–
5.11 Long-term trend Method used (Optional)	–	
5.12 Favourable reference range	a) –	
	b) <i>if a precise favourable reference range is unknown indicate if the range is:</i> between 51% and 100% smaller than the FRR	
	c) –	
	d) <i>Indicate method used to set reference value (multiple methods can be chosen)</i>	<i>Indicate the quality of information available:</i>
	Expert opinion	
5.13 Range when Directive came into force (Optional)	–	
5.14 Additional information (Optional)	–	

6. POPULATION

Population within the biogeographical/marine region concerned.

6.1 Year or period	2019–2024	
6.2 Population size (in reporting unit)	a) Unit	number of map 1x1 km grid cells
	b) Minimum	–
	c) Maximum	–
	d) Best single value	58
	e) Class	
6.3 Type of estimate	Best estimate	
6.4 Quality of extrapolation to reporting unit (Optional)	–	
6.5 Additional population size (using population unit other than reporting unit) (Optional)	a) Unit	–
	b) Minimum	–
	c) Maximum	–
	d) Best single value	–
6.6 Type of estimate (Optional)	–	
6.7 Population size Method used	Complete survey or a statistically robust estimate	
6.8 Change and reason for change in population size and main reason	Is there a change between reporting periods?	
	yes, due to genuine change	
	yes, due to improved knowledge/more accurate data	
	The change is mainly due to: improved knowledge or more accurate data	
6.9 Short-term trend Period	2013–2024	
6.10 Short-term trend Direction	decreasing	
6.11 Short-term trend Magnitude	a) Estimated Minimum	–
	b) Estimated Maximum	–
	c) Pre-defined range	-100 – -51%
	d) Unknown	–
6.12 Short-term trend Magnitude Type of estimate	–	
6.13 Short-term trend Method used	Based mainly on extrapolation from a limited amount of data	
6.14 Long-term trend Period (Optional)	–	
6.15 Long-term trend Direction (Optional)	–	

6.16 Long-term trend Magnitude (Optional)	a) Minimum	–
	b) Maximum	–
	c) Confidence interval	–
6.17 Long-term trend Method used (Optional)	–	
6.18 Favourable reference population	a) Population size (with unit):	
	b) if a precise favourable reference population is unknown indicate if the population is: between 51% and 100% smaller than the FRP	
	c) Indicate if favourable reference population is unknown: –	
	d) Indicate method used to set reference value (multiple methods can be chosen)	Indicate the quality of information available:
	Reference-based approach	High
6.19 Population size when Directive came into force (Optional)	–	
6.20 Additional Information (Optional)		

7. HABITAT FOR THE SPECIES

7.1 Sufficiency of area and quality of occupied habitat	a) Is area of occupied habitat sufficient (for long-term survival)? No	
	b) Is quality of occupied habitat sufficient (for long-term survival)? Yes	
	c) If NO to a) is there a sufficiently large area of unoccupied habitat of suitable quality (for long-term survival)? Yes	
7.2 Sufficiency of area and quality of occupied habitat Method used	Area of habitat: Based mainly on extrapolation from a limited amount of data	Quality of habitat: Based mainly on extrapolation from a limited amount of data
7.3 Short-term trend Period	2013–2024	
7.4 Short-term trend Direction	stable	

7.5 Short-term trend Method used	Based mainly on extrapolation from a limited amount of data
7.6 Long-term trend Period (Optional)	–
7.7 Long-term trend Direction (Optional)	–
7.8 Long-term trend Method used (Optional)	–
7.9 Additional information (Optional)	–

8. MAIN PRESSURES AND THREATS

8.1 Characterisation of pressures

Pressure	Timing	Scope (proportion of population affected)	Influence (on population or habitat of the species)	Invasive alien species of Union concern	Other invasive alien species
PA05 Agriculture - Abandonment of management/use of grasslands and other agricultural and agroforestry systems	ongoing and likely to be in the future	majority 50 – 90%	Medium influence		
PB06 Forestry - Logging or thinning (excl. clear cutting)	ongoing and likely to be in the future	minority <50%	Medium influence		
PB09 Forestry - Clear-cutting, removal of all trees	ongoing and likely to be in the future	minority <50%	High influence		
PC01 Extraction - Extraction of minerals	ongoing and likely to be in the future	minority <50%	High influence		
PJ01 Climate change - Temperature changes and extremes	ongoing and likely to be in the future	whole >90%	High influence		

8.2 Methods used (Optional)

–

8.3 Sources of information (Optional)

–

8.4 Additional information (Optional)

–

9. CONSERVATION MEASURES

9.1 Status of measures

Are measures needed?

Yes

Status of measures:

Part of measures identified have been taken

9.2 Scope of measures taken	50–90%
9.3 Main purpose of the measures taken	A. Indicate the main purpose(s) of measures taken: Maintain the current range, population and/or habitat for the species
	B. The main (primary) purpose: Maintain current state
9.4 Location of the measures taken	Both inside and outside Natura 2000
9.5 Response to the measures <i>(when the measures start to neutralize the pressure(s) and produce positive effects)</i>	Medium-term response (within the next two reporting periods, 2025–2036)
9.6 List of main conservation measures	MB06 – Stop forest management and exploitation practices MB05 – Adapt/change forest management and exploitation practices MS01 – Reinforce populations of species from the directives MS02 – Reintroduce species from the directives
9.7 Additional information (Optional)	–

10. FUTURE PROSPECTS

10.1 Future prospects of parameters	a) Range	Poor
	b) Population	Bad
	c) Habitat of the species	Good
10.2 Additional information (Optional)	–	

11. CONCLUSIONS

Assessment of conservation status at end of reporting period

11.1 Range	Bad (U2)
11.2 Population	Bad (U2)
11.3 Habitat for the species	Favourable (FV)
11.4 Future prospects	Bad (U2)
11.5 Overall assessment of Conservation Status	Bad (U2)
11.6 Overall trend in Conservation Status	deteriorating
11.7 Change and reasons for change in conservation status and conservation	Overall assessment of conservation status (11.5)

status trend	<i>Indicate whether there is a change from the previous reporting round and (if yes) the nature of that change.</i>	yes, due to genuine change
	<i>The change is mainly due to:</i>	genuine change
	Overall trend in conservation status (11.6)	
	<i>Indicate whether there is a change from the previous reporting round and (if yes) the nature of that change.</i>	yes, due to genuine change
	<i>The change is mainly due to:</i>	genuine change
11.8 Additional information (Optional)	–	

12. NATURA 2000 (PROPOSED SITES OF COMMUNITY IMPORTANCE (PSCIs), SITES OF COMMUNITY IMPORTANCE (SCIs) AND SPECIAL AREAS OF CONSERVATION (SACs) COVERAGE FOR ANNEX II SPECIES OF DIRECTIVE 92/43/EEC

12.1 Population size inside the pSCIs, SCIs and SACs network (on the biogeographical/marine level including all sites where the species is present)	a) Unit	number of map 1x1 km grid cells
	b) Minimum	–
	c) Maximum	–
	d) Best single value	37
12.2 Type of estimate	Best estimate	
12.3 Additional population size (using population unit other than reporting unit in field 6.2) (Optional)	a) Unit	–
	b) Minimum	–
	c) Maximum	–
	d) Best single value	–
12.4 Type of estimate (Optional)	–	
12.5 Population size inside the network Method used	Based mainly on extrapolation from a limited amount of data	
12.6 Short-term trend of population size within the network Direction	decreasing	

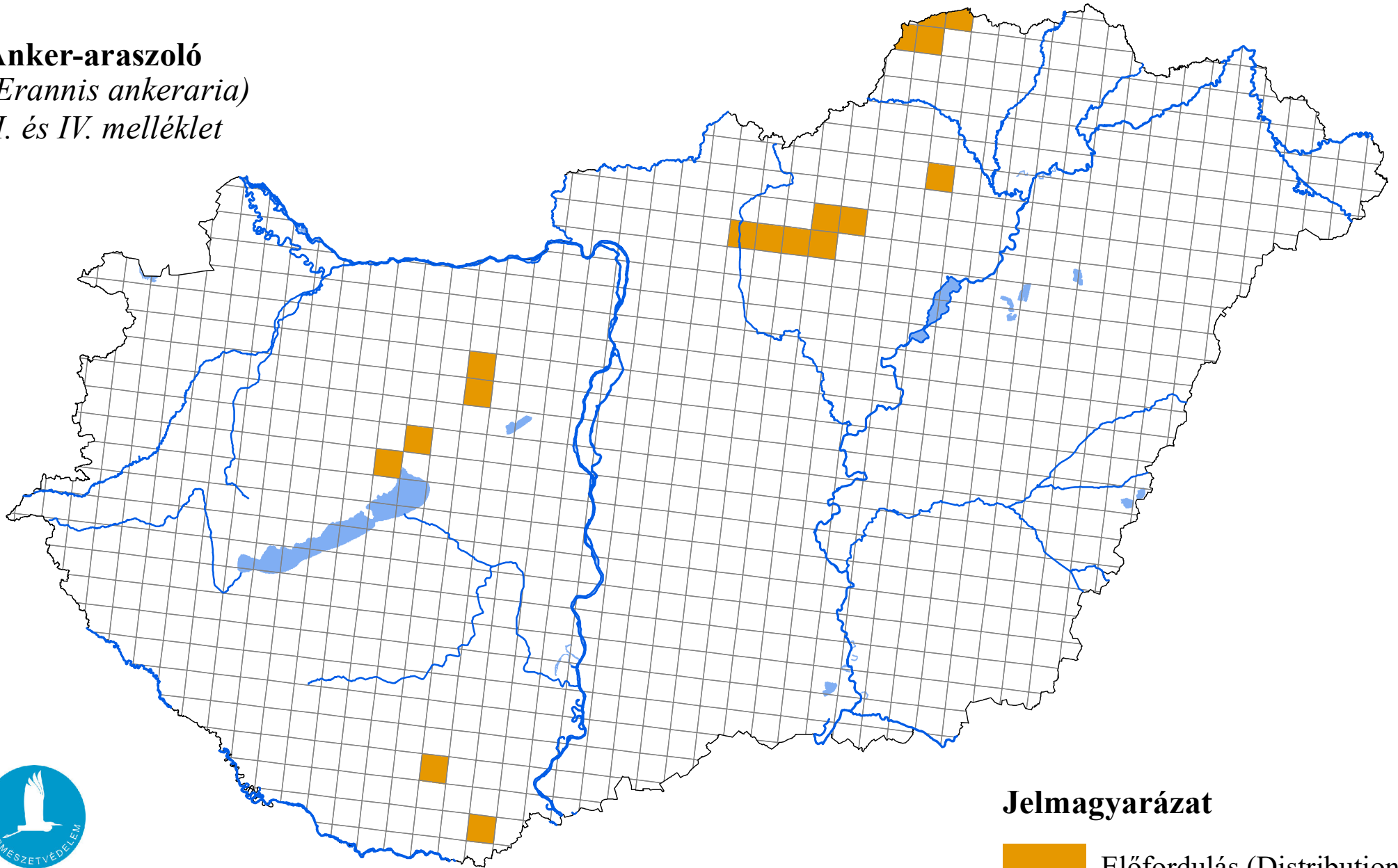
12.7 Short-term trend of population size within the network Method used	Based mainly on extrapolation from a limited amount of data
12.8 Short-term trend of habitat for the species within the network Direction	stable
12.9 Short-term trend of habitat for the species within the network Method used	Based mainly on extrapolation from a limited amount of data
12.10 Additional information (Optional)	–

13. COMPLEMENTARY INFORMATION

13.1 Justification of % thresholds for trends	–
13.2 Trans-boundary assessment	–
13.3 Other relevant information	–

Az élőhelyvédelmi irányelv 17. cikke alapján készített országjelentés 2025

Anker-araszoló
(*Erannis ankeraria*)
II. és IV. melléklet



Forrás: Agrárminisztérium,
Természetmegőrzési Főosztály

Jelmagyarázat

