

REPORT ON THE 'MAIN RESULTS OF THE SURVEILLANCE UNDER ARTICLE 17' FOR ANNEX II, IV AND V SPECIES OF DIRECTIVE 92/43/EEC

NATIONAL LEVEL

1. GENERAL INFORMATION

1.1 Member State	HU
1.2 Species code	1026
1.3 Species scientific name	<i>Helix pomatia</i>
1.4 Alternative species scientific name (Optional)	
1.5 Common name (Optional)	éticsiga

2. MAPS

Distribution of the species within the Member State concerned.

2.1 Sensitive species	No
2.2 Year or period	2019–2024
2.3 Distribution map	Yes
2.4 Distribution map Method used	Based mainly on expert opinion with very limited data
2.5 Additional maps (Optional)	–
2.6 Additional information (Optional)	–

3. INFORMATION RELATED TO ANNEX V SPECIES (ART. 14 OF DIRECTIVE 92/43/EEC)

3.1 Is the species taken in the wild/exploited?	Yes	
3.2 Are measures needed for the species (only for species in favourable conservation status)?	Yes	
3.3 Which of the measures in Art. 14 have been taken?	a) regulations regarding access to property	NO
	b) temporary or local prohibition of the taking of specimens in the wild and exploitation	YES
	c) regulation of the periods and/or methods of taking specimens	YES

	d) application of hunting and fishing rules which take account of the conservation of such populations	–					
	e) establishment of a system of licences for taking specimens or of quotas	YES					
	f) regulation of the purchase, sale, offering for sale, keeping for sale or transport for sale of specimens	YES					
	g) breeding in captivity of animal species as well as artificial propagation of plant species	NO					
	h) other measures, if yes, describe	–					
3.4 Hunting bag or quantity taken in the wild regardless of conservation status - for Mammals and Acipenseridae (Fish)	a) Unit	–					
	b) Statistics/ quantity taken	<i>Provide statistics/quantity taken per hunting season or per year (where season is not used) over the reporting period</i>					
		Season/ year 1	Season/ year 2	Season/ year 3	Season/ year 4	Season/ year 5	Season/ year 6
	Min. (raw, i.e. not rounded)						
	Max. (raw, i.e. not rounded)						
	Unknown	–	–	–	–	–	–
3.5 Hunting bag or quantity taken in the wild Method used	–						
3.6 Additional information (Optional)	–						

BIOGEOGRAPHICAL LEVEL

Complete for each biogeographical region or marine region concerned.

4. BIOGEOGRAPHICAL AND MARINE REGIONS

4.1 Biogeographical or marine region where the species occurs	Pannonian
4.2 First time reporting	No
4.3 Additional information	–

4.4 Sources of information	<p>Deli T. (2020): Csigák (Gastropoda) faunisztikai felmérése Sátoraljaújhely és Kovácsvágás térségében fűhálózás és avarmintagyűjtés segítségével.– kutatási jelentés Farkas R. (2021): Csigák (Gastropoda) faunisztikai felmérése a Bodrog menti erdőkben fűhálózás és avarminta-gyűjtés segítségével. – kutatási jelentés Danyik Tibor (2023): Natura 2000 jelölő fajok rovarfajok felmérése a Bélmegyeri Fás-puszta kiemelt jelentőségű természetmegőrzési terület (HUKM20013), a Sarkadi Fási-erdő különleges természetmegőrzési terület (HUKM20021), az Orosi tölgyes különleges természetmegőrzési terület (HUKM20024) és a Gyantéi erdők különleges természetmegőrzési terület (HUKM20025) erdőrészeiben Deli Tamás (2020): Erdőtervezéshez adandó természetvédelmi kezelői nyilatkozat összeállításához szükséges terepi adatgyűjtés; kutatási jelentés. Varga András, Deli Tamás (2023): Teresztris csiga (Gastropoda) közösségek felmérése a Kulléri-Nagy-erdőben és a Közös-erdő ER-ban (Kiskunsági Nemzeti Park, Csengőd); kutatási jelentés.</p>
----------------------------	--

5. RANGE

Range within the biogeographical/marine region concerned.

5.1 Surface area (km ²)	93011	
5.2 Change and reason for change in surface area of range and main reason	Is there a change between reporting periods? no, there is no change	
	The change is mainly due to:	
5.3 Short-term trend Period	2013–2024	
5.4 Short-term trend Direction	stable	
5.5 Short-term trend Magnitude (Optional)	a) Estimated Minimum	–
	b) Estimated Maximum	–
	c) Pre-defined range	–
	d) Unknown	–
5.6. Short-term trend Magnitude Type of estimate (Optional)	–	
5.7 Short-term trend Method used	Based mainly on extrapolation from a limited amount of data	
5.8 Long-term trend Period (Optional)	–	
5.9 Long-term trend Direction (Optional)	–	
5.10 Long-term trend Magnitude (Optional)	a) Minimum	–
	b) Maximum	–
5.11 Long-term trend Method used (Optional)	–	

5.12 Favourable reference range	a) –	
	b) <i>if a precise favourable reference range is unknown indicate if the range is:</i> approximately equal to the favourable reference range (less than 2% smaller)	
	c) –	
	d) <i>Indicate method used to set reference value (multiple methods can be chosen)</i>	<i>Indicate the quality of information available:</i>
	Reference-based approach	Moderate
Expert opinion		
5.13 Range when Directive came into force (Optional)	–	
5.14 Additional information (Optional)	According to recent (2015) taxonomic researches, beside <i>Helix pomatia</i> <i>Helix thessalica</i> is occurs in Hungary. The morphological separation of the two species is very hard even for the specialists in particular during field investigations. Due to these challenges there is no reliable information on accurate distribution.	

6. POPULATION

Population within the biogeographical/marine region concerned.

6.1 Year or period	2019–2024	
6.2 Population size (in reporting unit)	a) Unit	number of map 1x1 km grid cells
	b) Minimum	–
	c) Maximum	–
	d) Best single value	82731
	e) Class	
6.3 Type of estimate	Best estimate	
6.4 Quality of extrapolation to reporting unit (Optional)	–	
6.5 Additional population size (using population unit other than reporting unit) (Optional)	a) Unit	–
	b) Minimum	–
	c) Maximum	–
	d) Best single value	–
6.6 Type of estimate (Optional)	–	
6.7 Population size Method used	Based mainly on expert opinion with very limited data	
6.8 Change and reason for change in population size and main reason	Is there a change between reporting periods? yes, due to improved knowledge/more accurate data	

	The change is mainly due to: improved knowledge or more accurate data	
6.9 Short-term trend Period	2013–2024	
6.10 Short-term trend Direction	stable	
6.11 Short-term trend Magnitude	a) Estimated Minimum	–
	b) Estimated Maximum	–
	c) Pre-defined range	–
	d) Unknown	–
6.12 Short-term trend Magnitude Type of estimate	Best estimate	
6.13 Short-term trend Method used	Based mainly on expert opinion with very limited data	
6.14 Long-term trend Period (Optional)	–	
6.15 Long-term trend Direction (Optional)	–	
6.16 Long-term trend Magnitude (Optional)	a) Minimum	–
	b) Maximum	–
	c) Confidence interval	–
6.17 Long-term trend Method used (Optional)	–	
6.18 Favourable reference population	a) <i>Population size (with unit):</i>	
	b) <i>if a precise favourable reference population is unknown indicate if the population is:</i> approximately equal to the favourable reference population (less than 5% smaller)	
	c) <i>Indicate if favourable reference population is unknown:</i> –	
	d) <i>Indicate method used to set reference value (multiple methods can be chosen)</i>	<i>Indicate the quality of information available:</i>
	Reference-based approach	Low
Expert opinion		

6.19 Population size when Directive came into force (Optional)	–
6.20 Additional Information (Optional)	

7. HABITAT FOR THE SPECIES

7.1 Sufficiency of area and quality of occupied habitat	<p>a) Is area of occupied habitat sufficient (for long-term survival)? Yes</p> <p>b) Is quality of occupied habitat sufficient (for long-term survival)? Yes</p> <p>c) If NO to a) is there a sufficiently large area of unoccupied habitat of suitable quality (for long-term survival)? –</p>	
7.2 Sufficiency of area and quality of occupied habitat Method used	<p>Area of habitat: Based mainly on extrapolation from a limited amount of data</p>	<p>Quality of habitat: Based mainly on extrapolation from a limited amount of data</p>
7.3 Short-term trend Period	2013–2024	
7.4 Short-term trend Direction	stable	
7.5 Short-term trend Method used	Based mainly on extrapolation from a limited amount of data	
7.6 Long-term trend Period (Optional)	–	
7.7 Long-term trend Direction (Optional)	–	
7.8 Long-term trend Method used (Optional)	–	
7.9 Additional information (Optional)	–	

8. MAIN PRESSURES AND THREATS

8.1 Characterisation of pressures

Pressure	Timing	Scope (proportion of population affected)	Influence (on population or habitat of the species)	Invasive alien species of Union concern	Other invasive alien species
PA01 Agriculture - Conversion into agricultural land	ongoing and likely to be in the future	minority <50%	Low influence		
PA02 Agriculture - Conversion from one type of agricultural land use to another	ongoing and likely to be in the future	minority <50%	Low influence		

PA03 Agriculture - Conversion from mixed farming and agroforestry systems to specialised production	ongoing and likely to be in the future	minority <50%	Medium influence		
PA06 Agriculture - Mowing or cutting of grasslands	ongoing and likely to be in the future	minority <50%	Low influence		
PA07 Agriculture - Intensive grazing or overgrazing by livestock	ongoing and likely to be in the future	minority <50%	Low influence		
PA09 Agriculture - Burning for agriculture	ongoing and likely to be in the future	minority <50%	Low influence		
PA14 Agriculture - Use of plant protection chemicals	ongoing and likely to be in the future	minority <50%	Low influence		
PJ03 Climate change - Changes in precipitation regimes	ongoing and likely to be in the future	whole >90%	High influence		
PG10 Species exploitation - Harvesting or collecting of wild plants, fungi and animals on terrestrial land	ongoing and likely to be in the future	minority <50%	Low influence		
PA04 Agriculture - Removal of small landscape features for agricultural land parcel consolidation	ongoing and likely to be in the future	minority <50%	Medium influence		
PJ01 Climate change - Temperature changes and extremes	ongoing and likely to be in the future	whole >90%	High influence		
PJ10 Climate change - Change of habitat location, size and/or quality	ongoing and likely to be in the future	whole >90%	High influence		
PI02 Problematic species - Other invasive alien species (other than species of Union concern)	ongoing and likely to be in the future	minority <50%	Low influence		
8.2 Methods used (Optional)	—				
8.3 Sources of information (Optional)	—				
8.4 Additional information (Optional)	—				

9. CONSERVATION MEASURES

9.1 Status of measures	Are measures needed? Yes Status of measures: Part of measures identified have been taken
9.2 Scope of measures taken	50–90%
9.3 Main purpose of the measures taken	A. Indicate the main purpose(s) of measures taken: Maintain the current range, population and/or habitat for the species B. The main (primary) purpose: Maintain current state
9.4 Location of the measures taken	Both inside and outside Natura 2000
9.5 Response to the measures <i>(when the measures start to neutralize the pressure(s) and produce positive effects)</i>	Short-term response (within the current reporting period, 2019–2024)
9.6 List of main conservation measures	MA01 – Prevent conversion of natural and semi-natural habitats, and habitats of species into agricultural land MA05 – Adapt mowing, grazing and other equivalent agricultural activities (e.g. burning) MA06 – Stop mowing, grazing and other equivalent agricultural activities e.g. burning (incl. restore or improve habitats) MA09 – Manage the use of natural and synthetic fertilisers as well as chemicals in agricultural for plant and animal production MG02 – Management of hunting, recreational fishing, and the recreational or commercial harvesting or collection of plants and fungi (incl. restoration of habitats) MJ01 – Implement climate change mitigation measures
9.7 Additional information (Optional)	–

10. FUTURE PROSPECTS

10.1 Future prospects of parameters	a) Range	Good
	b) Population	Good
	c) Habitat of the species	Good
10.2 Additional information (Optional)	–	

11. CONCLUSIONS

Assessment of conservation status at end of reporting period

11.1 Range	Favourable (FV)	
11.2 Population	Favourable (FV)	
11.3 Habitat for the species	Favourable (FV)	
11.4 Future prospects	Favourable (FV)	
11.5 Overall assessment of Conservation Status	Favourable (FV)	
11.6 Overall trend in Conservation Status	stable	
11.7 Change and reasons for change in conservation status and conservation status trend	Overall assessment of conservation status (11.5)	
	<i>Indicate whether there is a change from the previous reporting round and (if yes) the nature of that change.</i>	no, there is no difference
	<i>The change is mainly due to:</i>	
	Overall trend in conservation status (11.6)	
	<i>Indicate whether there is a change from the previous reporting round and (if yes) the nature of that change.</i>	no, there is no difference
	<i>The change is mainly due to:</i>	
11.8 Additional information (Optional)	–	

12. NATURA 2000 (PROPOSED SITES OF COMMUNITY IMPORTANCE (PSCIs), SITES OF COMMUNITY IMPORTANCE (SCIs) AND SPECIAL AREAS OF CONSERVATION (SACs) COVERAGE FOR ANNEX II SPECIES OF DIRECTIVE 92/43/EEC

12.1 Population size inside the pSCIs, SCIs and SACs network (on the biogeographical/marine level including all sites where the species is present)	a) Unit	–
	b) Minimum	–
	c) Maximum	–
	d) Best single value	–
12.2 Type of estimate	–	
12.3 Additional population size (using population unit other than reporting unit in field 6.2) (Optional)	a) Unit	–
	b) Minimum	–
	c) Maximum	–

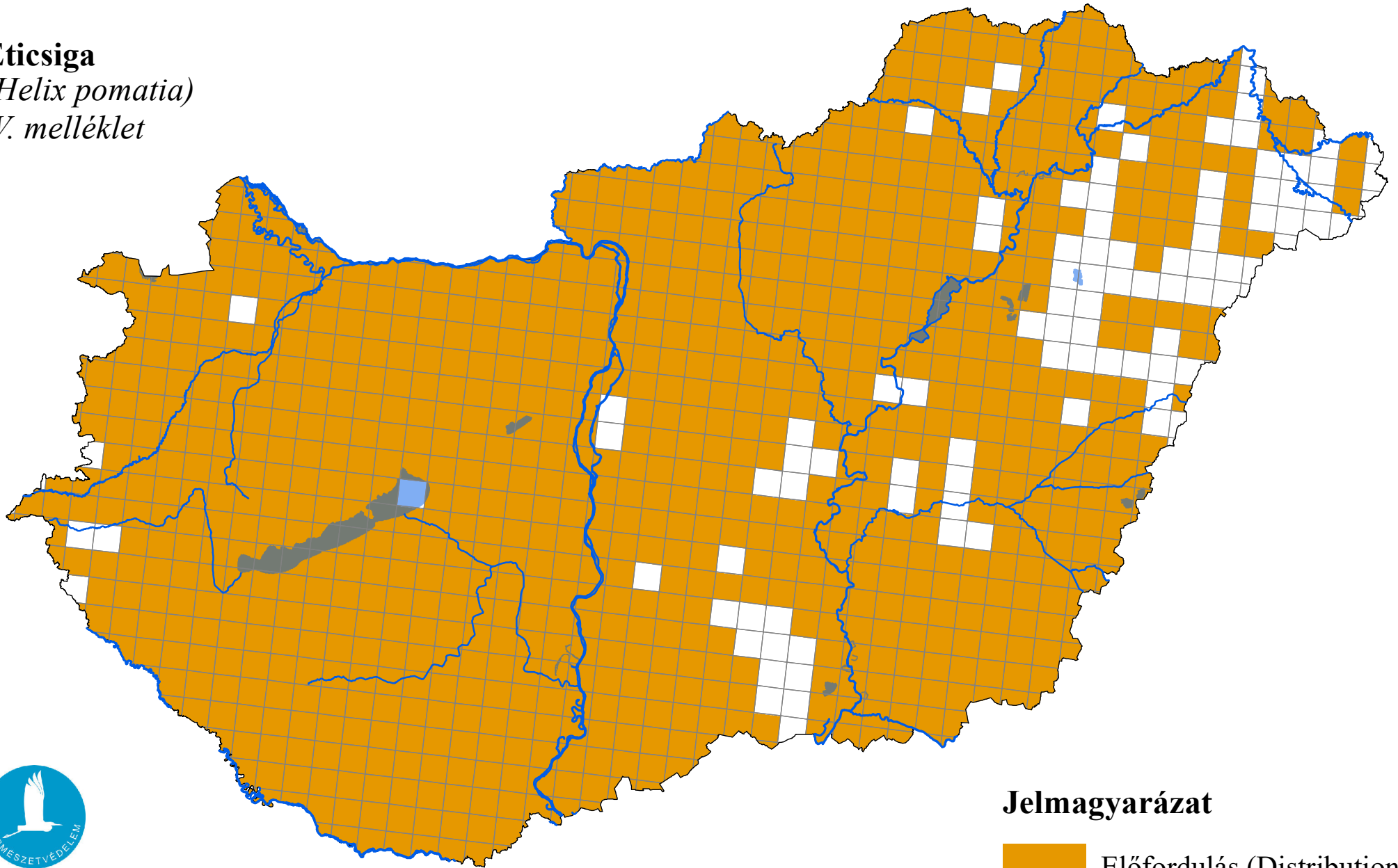
	d) Best single value	–
12.4 Type of estimate (Optional)		–
12.5 Population size inside the network Method used		–
12.6 Short-term trend of population size within the network Direction		–
12.7 Short-term trend of population size within the network Method used		–
12.8 Short-term trend of habitat for the species within the network Direction		–
12.9 Short-term trend of habitat for the species within the network Method used		–
12.10 Additional information (Optional)		–

13. COMPLEMENTARY INFORMATION

13.1 Justification of % thresholds for trends		–
13.2 Trans-boundary assessment		–
13.3 Other relevant information		–

Az élőhelyvédelmi irányelv 17. cikke alapján készített országjelentés, 2025

Éticsiga
(*Helix pomatia*)
V. melléklet



Forrás: Agrárminisztérium,
Természetmegőrzési Főosztály

Jelmagyarázat

