

REPORT ON THE 'MAIN RESULTS OF THE SURVEILLANCE UNDER ARTICLE 17' FOR ANNEX II, IV AND V SPECIES OF DIRECTIVE 92/43/EEC

NATIONAL LEVEL

1. GENERAL INFORMATION

1.1 Member State	HU
1.2 Species code	5365
1.3 Species scientific name	<i>Hypsugo savii</i>
1.4 Alternative species scientific name (Optional)	
1.5 Common name (Optional)	alpesi denevér

2. MAPS

Distribution of the species within the Member State concerned.

2.1 Sensitive species	No
2.2 Year or period	2019–2024
2.3 Distribution map	Yes
2.4 Distribution map Method used	Based mainly on extrapolation from a limited amount of data
2.5 Additional maps (Optional)	–
2.6 Additional information (Optional)	–

3. INFORMATION RELATED TO ANNEX V SPECIES (ART. 14 OF DIRECTIVE 92/43/EEC)

3.1 Is the species taken in the wild/exploited?	No	
3.2 Are measures needed for the species (only for species in favourable conservation status)?	No	
3.3 Which of the measures in Art. 14 have been taken?	a) regulations regarding access to property	–
	b) temporary or local prohibition of the taking of specimens in the wild and exploitation	–
	c) regulation of the periods and/or methods of taking specimens	–

	d) application of hunting and fishing rules which take account of the conservation of such populations	–					
	e) establishment of a system of licences for taking specimens or of quotas	–					
	f) regulation of the purchase, sale, offering for sale, keeping for sale or transport for sale of specimens	–					
	g) breeding in captivity of animal species as well as artificial propagation of plant species	–					
	h) other measures, if yes, describe	–					
3.4 Hunting bag or quantity taken in the wild regardless of conservation status - for Mammals and Acipenseridae (Fish)	a) Unit	–					
	b) Statistics/ quantity taken	<i>Provide statistics/quantity taken per hunting season or per year (where season is not used) over the reporting period</i>					
		Season/ year 1	Season/ year 2	Season/ year 3	Season/ year 4	Season/ year 5	Season/ year 6
	Min. (raw, i.e. not rounded)						
	Max. (raw, i.e. not rounded)						
	Unknown	–	–	–	–	–	–
3.5 Hunting bag or quantity taken in the wild Method used	–						
3.6 Additional information (Optional)	–						

BIOGEOGRAPHICAL LEVEL

Complete for each biogeographical region or marine region concerned.

4. BIOGEOGRAPHICAL AND MARINE REGIONS

4.1 Biogeographical or marine region where the species occurs	Pannonian
4.2 First time reporting	No
4.3 Additional information	–

4.4 Sources of information

Boldogh S.A.; Estók P.; Hegyi Z.; Dobrosi D.; Görföl T.; Bihari Z.; Dombi I.; Gombkötő P.; Paulovics P.; Mészáros J.; Máté B.; Bereczky A.; Szatyor M.; Géczi I. 2019. "Hogy vagytok denevérek?" – Az országos monitoring program első 15 évének néhány eredménye. Pp. 97-122. In: Váczi, O.; Varga, I. & Bakó, B. (szerk.): A Nemzeti Biodiverzitás-monitorozó Rendszer eredményei II. – Gerinces állatok. Körös-Maros Nemzeti Park Igazgatóság, Szarvas. Boldogh S.A. 2024: A Nemzeti Biodiverzitás-monitorozó Rendszer (NBmR) Denevérmonitorozó Programjának országos koordinációja, az eredmények értékelése (2024). Duna-Ipoly Nemzeti Park Igazgatóság, Budapest. 24 pp. (kézirat) Bükki Emlőstani Kutatócsoport Egyesület (2020): Denevérfauna vizsgálata a határmenti Natura 2000 területeken . Kutatási jelentés. 101p. Dobrosi Dénes (2019): Erdei denevérek felmérése az Alsó-Tisza hullámtér kiemelt jelentőségű természetmegőrzési terület (HUKN20031) és a T-erdő különleges természetmegőrzési terület Dobrosi Dénes (2023): Erdei denevérek felmérése a KMNP Kis-Sárrét, valamint a KMNP Bélmegyéri Fáspuszta területi egységeken Görföl, T., Dombi, I. & Zsebők, S. 2007. Az alpesi denevér (*Hypsugo savii* Bonaparte, 1837) Magyarországon - a faj hazai adatainak áttekintése, új eredmények. [Savi's pipistrelle (*Hypsugo savii* Bonaparte, 1837) in Hungary - review of Hungarian data and new results]. - In: Molnár, V. (ed.): Az V. Magyar Denevérvédelmi Konferencia (Pécs, 2005. december 3-4.) és a VI. Magyar Denevérvédelmi Konferencia (Mártély, 2007. október 12-14.) kiadványa [Proceedings of the 5th Conference on the Bat Conservation in Hungary (Pécs, 3rd to 4th of December 2005) and the 6th Conference on the Bat Conservation in Hungary (Mártély, 12th to 14th of October 2007)], CSEMETE Egyesület, Szeged, pp. 85-97. <https://hunbat.hu/> Uhrin, M., Hüttmeir, U., Kipson, M., Estók, P., Sachanowicz, K., Bücs, S., Karapandža, B., Paunović, M., Presetnik, P., Bashta, A.-T., Maxinová, E., Lehotská, B., Lehotský, R., Barti, L., Csösz, I., Szodoray-Paradi, F., Dombi, I., Görföl, T., Boldogh, S. A., Jére, C., Pocora, I. and Benda, P. 2015. Status of Savi's pipistrelle *Hypsugo savii* (Chiroptera) and range expansion in Central and south-eastern Europe: a review. *Mammal Review*, 46(1): 1–16. doi: 10.1111/mam.12050

5. RANGE

Range within the biogeographical/marine region concerned.

5.1 Surface area (km ²)	65150
5.2 Change and reason for change in surface area of range and main reason	Is there a change between reporting periods? yes, due to genuine change yes, due to improved knowledge/more accurate data The change is mainly due to: genuine change
5.3 Short-term trend Period	2013–2024
5.4 Short-term trend Direction	increasing

5.5 Short-term trend Magnitude (Optional)	a) Estimated Minimum	–	
	b) Estimated Maximum	–	
	c) Pre-defined range	–	
	d) Unknown	–	
5.6. Short-term trend Magnitude Type of estimate (Optional)	–		
5.7 Short-term trend Method used	Based mainly on extrapolation from a limited amount of data		
5.8 Long-term trend Period (Optional)	–		
5.9 Long-term trend Direction (Optional)	–		
5.10 Long-term trend Magnitude (Optional)	a) Minimum	–	
	b) Maximum	–	
5.11 Long-term trend Method used (Optional)	–		
5.12 Favourable reference range	a) –		
	b) <i>if a precise favourable reference range is unknown indicate if the range is:</i> approximately equal to the favourable reference range (less than 2% smaller)		
	c) –		
	d) <i>Indicate method used to set reference value (multiple methods can be chosen)</i>	<i>Indicate the quality of information available:</i>	
	Expert opinion		
5.13 Range when Directive came into force (Optional)	–		
5.14 Additional information (Optional)	–		

6. POPULATION

Population within the biogeographical/marine region concerned.

6.1 Year or period	2019–2024	
6.2 Population size (in reporting unit)	a) Unit	number of individuals
	b) Minimum	5000
	c) Maximum	25000
	d) Best single value	–
	e) Class	
6.3 Type of estimate	Best estimate	

6.4 Quality of extrapolation to reporting unit (Optional)	–	
6.5 Additional population size (using population unit other than reporting unit) (Optional)	a) Unit	–
	b) Minimum	–
	c) Maximum	–
	d) Best single value	–
6.6 Type of estimate (Optional)	–	
6.7 Population size Method used	Based mainly on expert opinion with very limited data	
6.8 Change and reason for change in population size and main reason	Is there a change between reporting periods?	
	yes, due to genuine change	
	yes, due to improved knowledge/more accurate data	
	yes, due to the use of different method	
	The change is mainly due to: genuine change	
6.9 Short-term trend Period	2013–2024	
6.10 Short-term trend Direction	increasing	
6.11 Short-term trend Magnitude	a) Estimated Minimum	–
	b) Estimated Maximum	–
	c) Pre-defined range	13 – 25%
	d) Unknown	–
6.12 Short-term trend Magnitude Type of estimate	Best estimate	
6.13 Short-term trend Method used	Based mainly on expert opinion with very limited data	
6.14 Long-term trend Period (Optional)	–	
6.15 Long-term trend Direction (Optional)	–	
6.16 Long-term trend Magnitude (Optional)	a) Minimum	–
	b) Maximum	–
	c) Confidence interval	–
6.17 Long-term trend Method used (Optional)	–	

6.18 Favourable reference population	<i>a) Population size (with unit):</i>	
	<i>b) if a precise favourable reference population is unknown indicate if the population is: approximately equal to the favourable reference population (less than 5% smaller)</i>	
	<i>c) Indicate if favourable reference population is unknown:</i> –	
	<i>d) Indicate method used to set reference value (multiple methods can be chosen)</i>	<i>Indicate the quality of information available:</i>
	Reference-based approach	Moderate
	Expert opinion	
6.19 Population size when Directive came into force (Optional)	–	
6.20 Additional Information (Optional)		

7. HABITAT FOR THE SPECIES

7.1 Sufficiency of area and quality of occupied habitat	<p>a) Is area of occupied habitat sufficient (for long-term survival)? Yes</p> <p>b) Is quality of occupied habitat sufficient (for long-term survival)? Yes</p> <p>c) If NO to a) is there a sufficiently large area of unoccupied habitat of suitable quality (for long-term survival)? –</p>	
7.2 Sufficiency of area and quality of occupied habitat Method used	Area of habitat: Based mainly on extrapolation from a limited amount of data	Quality of habitat: Based mainly on expert opinion with very limited data
7.3 Short-term trend Period	2013–2024	
7.4 Short-term trend Direction	stable	
7.5 Short-term trend Method used	Based mainly on expert opinion with very limited data	
7.6 Long-term trend Period (Optional)	–	
7.7 Long-term trend Direction (Optional)	–	

7.8 Long-term trend Method used (Optional)	—
7.9 Additional information (Optional)	—

8. MAIN PRESSURES AND THREATS

8.1 Characterisation of pressures

Pressure	Timing	Scope (proportion of population affected)	Influence (on population or habitat of the species)	Invasive alien species of Union concern	Other invasive alien species
PA01 Agriculture - Conversion into agricultural land	ongoing and likely to be in the future	minority <50%	Medium influence		
PA02 Agriculture - Conversion from one type of agricultural land use to another	ongoing and likely to be in the future	minority <50%	Medium influence		
PA03 Agriculture - Conversion from mixed farming and agroforestry systems to specialised production	ongoing and likely to be in the future	majority 50 – 90%	Medium influence		
PA04 Agriculture - Removal of small landscape features for agricultural land parcel consolidation	ongoing and likely to be in the future	minority <50%	Medium influence		
PA05 Agriculture - Abandonment of management/use of grasslands and other agricultural and agroforestry systems	ongoing and likely to be in the future	minority <50%	Medium influence		
PA14 Agriculture - Use of plant protection chemicals	ongoing and likely to be in the future	majority 50 – 90%	High influence		
PB02 Forestry - Conversion from one type of forestry land use to another	ongoing and likely to be in the future	minority <50%	Medium influence		
PB03 Forestry - Introduction and spread of new species for forestry purposes	ongoing and likely to be in the future	minority <50%	Medium influence		
PB06 Forestry - Logging or thinning (excl. clear cutting)	ongoing and likely to be in the future	minority <50%	Medium influence		

PB07 Forestry - Removal of dead and dying trees (incl. debris)	ongoing and likely to be in the future	minority <50%	Medium influence		
PB08 Forestry - Removal of old trees (excl. dead or dying trees)	ongoing and likely to be in the future	minority <50%	Medium influence		
PB09 Forestry - Clear-cutting, removal of all trees	ongoing and likely to be in the future	minority <50%	Medium influence		
PB14 Forestry - Forest management reducing old growth forests	ongoing and likely to be in the future	minority <50%	Medium influence		
PF02 Infrastructure - Infrastructure or modification in existing built-up areas	ongoing and likely to be in the future	majority 50 – 90%	High influence		
PF12 Infrastructure - Residential, commercial and industrial activities and structures generating noise, light, heat or other forms of pollution	ongoing and likely to be in the future	majority 50 – 90%	High influence		
PJ01 Climate change - Temperature changes and extremes	ongoing and likely to be in the future	whole >90%	High influence		
PJ10 Climate change - Change of habitat location, size and/or quality	ongoing and likely to be in the future	whole >90%	High influence		
PJ11 Climate change - Desynchronisation of biological/ecological processes	ongoing and likely to be in the future	whole >90%	High influence		
PJ12 Climate change - Decline or extinction of related species	ongoing and likely to be in the future	whole >90%	High influence		
8.2 Methods used (Optional)	—				
8.3 Sources of information (Optional)	—				
8.4 Additional information (Optional)	—				

9. CONSERVATION MEASURES

9.1 Status of measures	<p>Are measures needed?</p> <p>Yes</p> <p>Status of measures:</p> <p>Measures identified, but none yet taken</p>
9.2 Scope of measures taken	–
9.3 Main purpose of the measures taken	–
9.4 Location of the measures taken	–
9.5 Response to the measures <i>(when the measures start to neutralize the pressure(s) and produce positive effects)</i>	–
9.6 List of main conservation measures	<p>MA01 – Prevent conversion of natural and semi-natural habitats, and habitats of species into agricultural land</p> <p>MA02 – Restore small landscape features on agricultural land</p> <p>MA03 – Maintain existing extensive agricultural practices and agricultural landscape features</p> <p>MB01 – Prevent conversion of (semi-) natural habitats into forests and of (semi-) natural forests into intensive forest plantation</p> <p>MB02 – Maintain existing traditional forest management and exploitation practices</p> <p>MB03 – Reinstate forest management and exploitation practices</p> <p>MB06 – Stop forest management and exploitation practices</p> <p>MF03 – Reduce impact of outdoor sports, leisure and recreational activities (incl. restoration of habitats)</p> <p>MF07 – Reduce/eliminate pollution (incl. noise, light, heat, soil pollution) from industrial, commercial, residential and recreational areas and activities</p> <p>MF10 – Other measures related to residential, commercial, industrial and recreational infrastructures, operations and activities</p> <p>MJ01 – Implement climate change mitigation measures</p> <p>MJ02 – Implement climate change adaptation measures</p> <p>MM01 – Management of habitats (others than agriculture and forest) to slow, stop or reverse natural processes that occur without direct or indirect influence from human activities or climate change</p> <p>MS03 – Restoration of habitat of species from the directives</p>
9.7 Additional information (Optional)	–

10. FUTURE PROSPECTS

10.1 Future prospects of	a) Range	Good
--------------------------	----------	------

parameters	b) Population	Good
	c) Habitat of the species	Good
10.2 Additional information (Optional)	–	

11. CONCLUSIONS

Assessment of conservation status at end of reporting period

11.1 Range	Favourable (FV)	
11.2 Population	Favourable (FV)	
11.3 Habitat for the species	Favourable (FV)	
11.4 Future prospects	Favourable (FV)	
11.5 Overall assessment of Conservation Status	Favourable (FV)	
11.6 Overall trend in Conservation Status	stable	
11.7 Change and reasons for change in conservation status and conservation status trend	Overall assessment of conservation status (11.5)	
	<i>Indicate whether there is a change from the previous reporting round and (if yes) the nature of that change.</i>	no, there is no difference
	<i>The change is mainly due to:</i>	
	Overall trend in conservation status (11.6)	
	<i>Indicate whether there is a change from the previous reporting round and (if yes) the nature of that change.</i>	yes, due to improved knowledge/more accurate data
	<i>The change is mainly due to:</i>	improved knowledge or more accurate data
11.8 Additional information (Optional)	–	

12. NATURA 2000 (PROPOSED SITES OF COMMUNITY IMPORTANCE (PSCIs), SITES OF COMMUNITY IMPORTANCE (SCIs) AND SPECIAL AREAS OF CONSERVATION (SACs) COVERAGE FOR ANNEX II SPECIES OF DIRECTIVE 92/43/EEC

12.1 Population size inside the pSCIs, SCIs and SACs network (on the	a) Unit	–
	b) Minimum	–

biogeographical/marine level including all sites where the species is present)	c) Maximum	–
	d) Best single value	–
12.2 Type of estimate	–	
12.3 Additional population size (using population unit other than reporting unit in field 6.2) (Optional)	a) Unit	–
	b) Minimum	–
	c) Maximum	–
	d) Best single value	–
12.4 Type of estimate (Optional)	–	
12.5 Population size inside the network Method used	–	
12.6 Short-term trend of population size within the network Direction	–	
12.7 Short-term trend of population size within the network Method used	–	
12.8 Short-term trend of habitat for the species within the network Direction	–	
12.9 Short-term trend of habitat for the species within the network Method used	–	
12.10 Additional information (Optional)	–	

13. COMPLEMENTARY INFORMATION

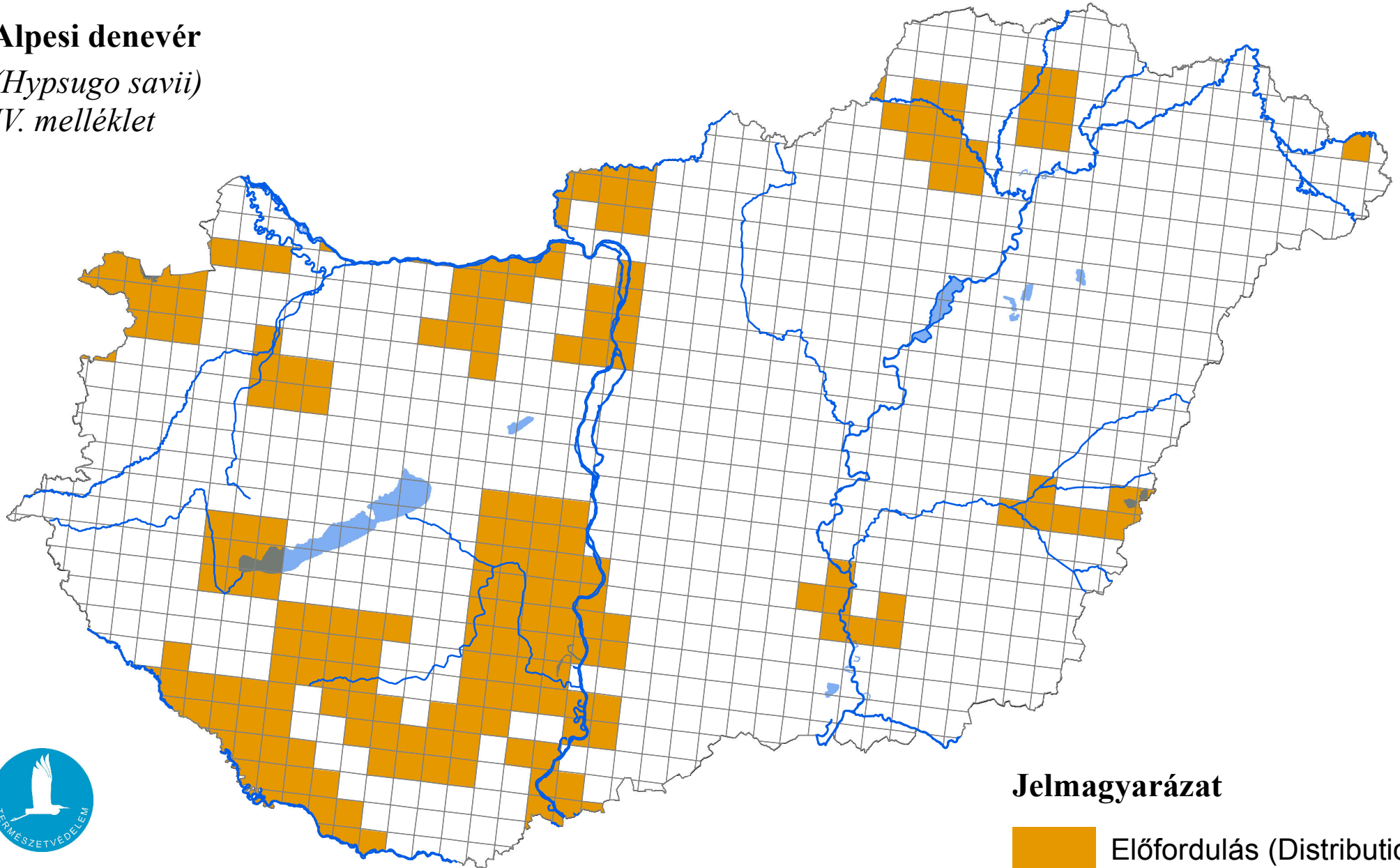
13.1 Justification of % thresholds for trends	–
13.2 Trans-boundary assessment	–
13.3 Other relevant information	–

Az élőhelyvédelmi irányelv 17. cikke szerinti országjelentés, 2025

Alpesi denevér

(*Hypsugo savii*)

IV. melléklet



Forrás: Agrárminisztérium,
Természetmegőrzési Főosztály

Jelmagyarázat

 Előfordulás (Distribution)

0 25 50 Kilometers
