

REPORT ON THE 'MAIN RESULTS OF THE SURVEILLANCE UNDER ARTICLE 17' FOR ANNEX II, IV AND V SPECIES OF DIRECTIVE 92/43/EEC

NATIONAL LEVEL

1. GENERAL INFORMATION

1.1 Member State	HU
1.2 Species code	4048
1.3 Species scientific name	<i>Isophya costata</i>
1.4 Alternative species scientific name (Optional)	
1.5 Common name (Optional)	magyar tarsza

2. MAPS

Distribution of the species within the Member State concerned.

2.1 Sensitive species	No
2.2 Year or period	2019–2024
2.3 Distribution map	Yes
2.4 Distribution map Method used	Based mainly on extrapolation from a limited amount of data
2.5 Additional maps (Optional)	–
2.6 Additional information (Optional)	–

3. INFORMATION RELATED TO ANNEX V SPECIES (ART. 14 OF DIRECTIVE 92/43/EEC)

3.1 Is the species taken in the wild/exploited?	No	
3.2 Are measures needed for the species (only for species in favourable conservation status)?	No	
3.3 Which of the measures in Art. 14 have been taken?	a) regulations regarding access to property	–
	b) temporary or local prohibition of the taking of specimens in the wild and exploitation	–
	c) regulation of the periods and/or methods of taking specimens	–

	d) application of hunting and fishing rules which take account of the conservation of such populations	–					
	e) establishment of a system of licences for taking specimens or of quotas	–					
	f) regulation of the purchase, sale, offering for sale, keeping for sale or transport for sale of specimens	–					
	g) breeding in captivity of animal species as well as artificial propagation of plant species	–					
	h) other measures, if yes, describe	–					
3.4 Hunting bag or quantity taken in the wild regardless of conservation status - for Mammals and Acipenseridae (Fish)	a) Unit	–					
	b) Statistics/ quantity taken	<i>Provide statistics/quantity taken per hunting season or per year (where season is not used) over the reporting period</i>					
		Season/ year 1	Season/ year 2	Season/ year 3	Season/ year 4	Season/ year 5	Season/ year 6
	Min. (raw, i.e. not rounded)						
	Max. (raw, i.e. not rounded)						
	Unknown	–	–	–	–	–	–
3.5 Hunting bag or quantity taken in the wild Method used	–						
3.6 Additional information (Optional)	–						

BIOGEOGRAPHICAL LEVEL

Complete for each biogeographical region or marine region concerned.

4. BIOGEOGRAPHICAL AND MARINE REGIONS

4.1 Biogeographical or marine region where the species occurs	Pannonian
4.2 First time reporting	No
4.3 Additional information	–

4.4 Sources of information

A Nemzeti Biodiverzitás-monitorozó Rendszer 2019-2024 közti felméréseinek jelentései „A közösségi jelentőségű fajok és élőhelyek megőrzését szolgáló tudásbázis fejlesztése” (KEHOP-4.3.0-VEKOP-15-2016-00001) projekt adatai (2017-2019) Nagy A. & Rácz I.A. (2014) Magyar tarsza, Stys-tarsza, Erdélyi avarszöcske, Álolaszsáska, Vöröslábú hegyisáska, Eurázsiai rétisáska. In: Haraszthy L. (szerk.): Natura 2000 fajok és élőhelyek Magyarországon. Csákvár: Pro Vértes Természetvédelmi Közalapítvány, 190-204. pp. Kenyeres, Z., Kisbenedek, T. & Szövényi G. (2013) Orthoptera fauna of the Kisalföld (Western-Hungary) Folia historico naturalia m usei Matraensis 37: 47–64. pp. Kenyeres Z. & Rácz I. A. (2013) A Bakonyvidék állatföldrajzi felosztása az egyenesszárnyúak (Orthoptera) elterjedési mintázatai alapján. Folia Musei Historico-Naturalis Bakonyiensis. 30: 83-100. pp. Szövényi, G., Harnos, K. & Nagy, B. (2013) The Orthoptera fauna of Cserhát Hills and its surroundings (North Hungary). ARTICULATA 28 (1/2): 69–90. pp Kenyeres Z. (2014) A Kisalföld egyenesszárnyú-kutatásának legújabb eredményei (2002–2012). Szélkiáltó 16. 42-44. pp. Kenyeres Z., Takács G. & Bauer N. (2017) A magyar tarsza (*Isophya costata* Brunner von Wattenwyl, 1878) a Kisalföldön és a Nyugat-magyarországi peremvidéken. Rence 2: 111–122. pp. Kenyeres, Z., Takács, G. & Bauer, N. (2018) Effects of climatic factors on yearly population sizes of *Isophya costata* (Orthoptera). North- Western Journal of Zoology 14 (1): 13-16. pp. Deli T., Danyik T. (szerk.) (2015) A Körös-Maros Nemzeti Park természeti értékei II. A Körös-Maros nemzeti Park Állatvilága - Gerinctelenek – KMNPI Szövényi G. (2018) Egyenesszárnyú rovarok a Duna–Tisza közti Turjánvidéken (Orthoptera). Természetvédelem és kutatás a Turjánvidék északi részén. Rosalia 10: 473-508. pp. Nagy A., Puskás G., Szövényi G. & Kenyeres Z. (2021): A magyar tarsza (*Isophya costata*) monitorozása. – In: Kemencei Z. & Patalenszki A. (szerk.): Módszertani kézikönyv a hazánkban előforduló egyes közösségi jelentőségű állatfajok terepi vizsgálatához. – Agrárminisztérium, Budapest, 94-105. pp. Kenyeres, Z. & Bauer, N. (2021): Conservation possibilities of *Isophya costata* (Orthoptera: Tettigoniidae: Phaneropterinae) based on frequency, population size, and habitats. Journal of Orthoptera Research 30(1): 35–41. pp. Kenyeres Z. (2024) Adatok a Dunántúli-középhegység egyenesszárnyú (Orthoptera) faunájának ismeretéhez VI. Folia Historico-naturalia Musei Matraensis 48: 41–53. pp.

5. RANGE

Range within the biogeographical/marine region concerned.

5.1 Surface area (km²)

13960.78

5.2 Change and reason for change in surface area of range and main reason

Is there a change between reporting periods?

yes, due to improved knowledge/more accurate data

The change is mainly due to:

improved knowledge or more accurate data

5.3 Short-term trend Period

2013–2024

5.4 Short-term trend Direction

stable

5.5 Short-term trend Magnitude (Optional)	a) Estimated Minimum	–	
	b) Estimated Maximum	–	
	c) Pre-defined range	–	
	d) Unknown	–	
5.6. Short-term trend Magnitude Type of estimate (Optional)	–		
5.7 Short-term trend Method used	Based mainly on extrapolation from a limited amount of data		
5.8 Long-term trend Period (Optional)	–		
5.9 Long-term trend Direction (Optional)	–		
5.10 Long-term trend Magnitude (Optional)	a) Minimum	–	
	b) Maximum	–	
5.11 Long-term trend Method used (Optional)	–		
5.12 Favourable reference range	a) –		
	b) <i>if a precise favourable reference range is unknown indicate if the range is:</i> between 2% and 10% smaller than the FRR		
	c) –		
	d) <i>Indicate method used to set reference value (multiple methods can be chosen)</i>	<i>Indicate the quality of information available:</i>	
	Reference-based approach	Moderate	
Expert opinion			
5.13 Range when Directive came into force (Optional)	–		
5.14 Additional information (Optional)	–		

6. POPULATION

Population within the biogeographical/marine region concerned.

6.1 Year or period	2019–2024	
6.2 Population size (in reporting unit)	a) Unit	number of map 1x1 km grid cells
	b) Minimum	–
	c) Maximum	–
	d) Best single value	595
	e) Class	

6.3 Type of estimate	minimum	
6.4 Quality of extrapolation to reporting unit (Optional)	–	
6.5 Additional population size (using population unit other than reporting unit) (Optional)	a) Unit	–
	b) Minimum	–
	c) Maximum	–
	d) Best single value	–
6.6 Type of estimate (Optional)	–	
6.7 Population size Method used	Based mainly on extrapolation from a limited amount of data	
6.8 Change and reason for change in population size and main reason	Is there a change between reporting periods? yes, due to improved knowledge/more accurate data	
	The change is mainly due to: improved knowledge or more accurate data	
6.9 Short-term trend Period	2013–2024	
6.10 Short-term trend Direction	stable	
6.11 Short-term trend Magnitude	a) Estimated Minimum	–
	b) Estimated Maximum	–
	c) Pre-defined range	–
	d) Unknown	–
6.12 Short-term trend Magnitude Type of estimate	–	
6.13 Short-term trend Method used	Based mainly on expert opinion with very limited data	
6.14 Long-term trend Period (Optional)	–	
6.15 Long-term trend Direction (Optional)	–	
6.16 Long-term trend Magnitude (Optional)	a) Minimum	–
	b) Maximum	–
	c) Confidence interval	–
6.17 Long-term trend Method used (Optional)	–	
6.18 Favourable reference population	<i>a) Population size (with unit):</i>	

	<p><i>b) if a precise favourable reference population is unknown indicate if the population is:</i> approximately equal to the favourable reference population (less than 5% smaller)</p>	
	<p><i>c) Indicate if favourable reference population is unknown:</i> –</p>	
	<p><i>d) Indicate method used to set reference value (multiple methods can be chosen)</i></p>	<p><i>Indicate the quality of information available:</i></p>
	Reference-based approach	Moderate
	Expert opinion	
6.19 Population size when Directive came into force (Optional)	–	
6.20 Additional Information (Optional)		

7. HABITAT FOR THE SPECIES

7.1 Sufficiency of area and quality of occupied habitat	<p>a) Is area of occupied habitat sufficient (for long-term survival)? Yes</p> <p>b) Is quality of occupied habitat sufficient (for long-term survival)? Yes</p> <p>c) If NO to a) is there a sufficiently large area of unoccupied habitat of suitable quality (for long-term survival)? –</p>	
7.2 Sufficiency of area and quality of occupied habitat Method used	<p>Area of habitat: Based mainly on extrapolation from a limited amount of data</p>	<p>Quality of habitat: Based mainly on extrapolation from a limited amount of data</p>
7.3 Short-term trend Period	2013–2024	
7.4 Short-term trend Direction	decreasing	
7.5 Short-term trend Method used	Based mainly on extrapolation from a limited amount of data	
7.6 Long-term trend Period (Optional)	–	
7.7 Long-term trend Direction (Optional)	–	
7.8 Long-term trend Method used (Optional)	–	

7.9 Additional information (Optional)	—
---------------------------------------	---

8. MAIN PRESSURES AND THREATS

8.1 Characterisation of pressures

Pressure	Timing	Scope (proportion of population affected)	Influence (on population or habitat of the species)	Invasive alien species of Union concern	Other invasive alien species
PA02 Agriculture - Conversion from one type of agricultural land use to another	ongoing and likely to be in the future	minority <50%	Low influence		
PA05 Agriculture - Abandonment of management/use of grasslands and other agricultural and agroforestry systems	ongoing and likely to be in the future	minority <50%	Low influence		
PA06 Agriculture - Mowing or cutting of grasslands	ongoing and likely to be in the future	majority 50 – 90%	Medium influence		
PA09 Agriculture - Burning for agriculture	ongoing and likely to be in the future	minority <50%	Low influence		
PA14 Agriculture - Use of plant protection chemicals	ongoing and likely to be in the future	minority <50%	Low influence		
PI02 Problematic species - Other invasive alien species (other than species of Union concern)	ongoing and likely to be in the future	majority 50 – 90%	Medium influence		<i>Solidago spp.</i>
PI03 Problematic species - Problematic native species	ongoing and likely to be in the future	majority 50 – 90%	Medium influence		
PJ01 Climate change - Temperature changes and extremes	ongoing and likely to be in the future	whole >90%	High influence		
PJ03 Climate change - Changes in precipitation regimes	ongoing and likely to be in the future	whole >90%	High influence		
8.2 Methods used (Optional)	—				
8.3 Sources of information (Optional)	—				
8.4 Additional information (Optional)	—				

9. CONSERVATION MEASURES

9.1 Status of measures	<p>Are measures needed?</p> <p>Yes</p> <p>Status of measures:</p> <p>Part of measures identified have been taken</p>
9.2 Scope of measures taken	<50%
9.3 Main purpose of the measures taken	<p>A. Indicate the main purpose(s) of measures taken:</p> <p>Maintain the current range, population and/or habitat for the species</p> <p>B. The main (primary) purpose:</p> <p>Maintain current state</p>
9.4 Location of the measures taken	Both inside and outside Natura 2000
9.5 Response to the measures <i>(when the measures start to neutralize the pressure(s) and produce positive effects)</i>	Medium-term response (within the next two reporting periods, 2025–2036)
9.6 List of main conservation measures	<p>MA01 – Prevent conversion of natural and semi-natural habitats, and habitats of species into agricultural land</p> <p>MA03 – Maintain existing extensive agricultural practices and agricultural landscape features</p> <p>MA05 – Adapt mowing, grazing and other equivalent agricultural activities (e.g. burning)</p> <p>MA09 – Manage the use of natural and synthetic fertilisers as well as chemicals in agricultural for plant and animal production</p> <p>MG03 – Reducing the impact of (re-) stocking for fishing and hunting, of artificial feeding and predator control</p> <p>MH01 – Reduce impact of military installations and activities</p> <p>MI03 – Management, control or eradication of other invasive alien species</p> <p>MI04 – Restoration of habitats affected by invasive alien species (incl. of Union concern and others)</p> <p>MI05 – Management of problematic native species</p> <p>MJ01 – Implement climate change mitigation measures</p> <p>MS03 – Restoration of habitat of species from the directives</p>
9.7 Additional information (Optional)	–

10. FUTURE PROSPECTS

10.1 Future prospects of parameters	a) Range	Good
	b) Population	Poor
	c) Habitat of the species	Poor
10.2 Additional information (Optional)	–	

11. CONCLUSIONS

Assessment of conservation status at end of reporting period

11.1 Range	Favourable (FV)	
11.2 Population	Favourable (FV)	
11.3 Habitat for the species	Inadequate (U1)	
11.4 Future prospects	Inadequate (U1)	
11.5 Overall assessment of Conservation Status	Inadequate (U1)	
11.6 Overall trend in Conservation Status	deteriorating	
11.7 Change and reasons for change in conservation status and conservation status trend	Overall assessment of conservation status (11.5)	
	<i>Indicate whether there is a change from the previous reporting round and (if yes) the nature of that change.</i>	no, there is no difference
	<i>The change is mainly due to:</i>	
	Overall trend in conservation status (11.6)	
	<i>Indicate whether there is a change from the previous reporting round and (if yes) the nature of that change.</i>	no, there is no difference
	<i>The change is mainly due to:</i>	
11.8 Additional information (Optional)	–	

12. NATURA 2000 (PROPOSED SITES OF COMMUNITY IMPORTANCE (PSCIs), SITES OF COMMUNITY IMPORTANCE (SCIs) AND SPECIAL AREAS OF CONSERVATION (SACs) COVERAGE FOR ANNEX II SPECIES OF DIRECTIVE 92/43/EEC

12.1 Population size inside the pSCIs, SCIs and SACs network (on the biogeographical/marine level including all sites where the species is present)	a) Unit	number of map 1x1 km grid cells
	b) Minimum	–
	c) Maximum	–
	d) Best single value	459
12.2 Type of estimate	minimum	
12.3 Additional	a) Unit	–

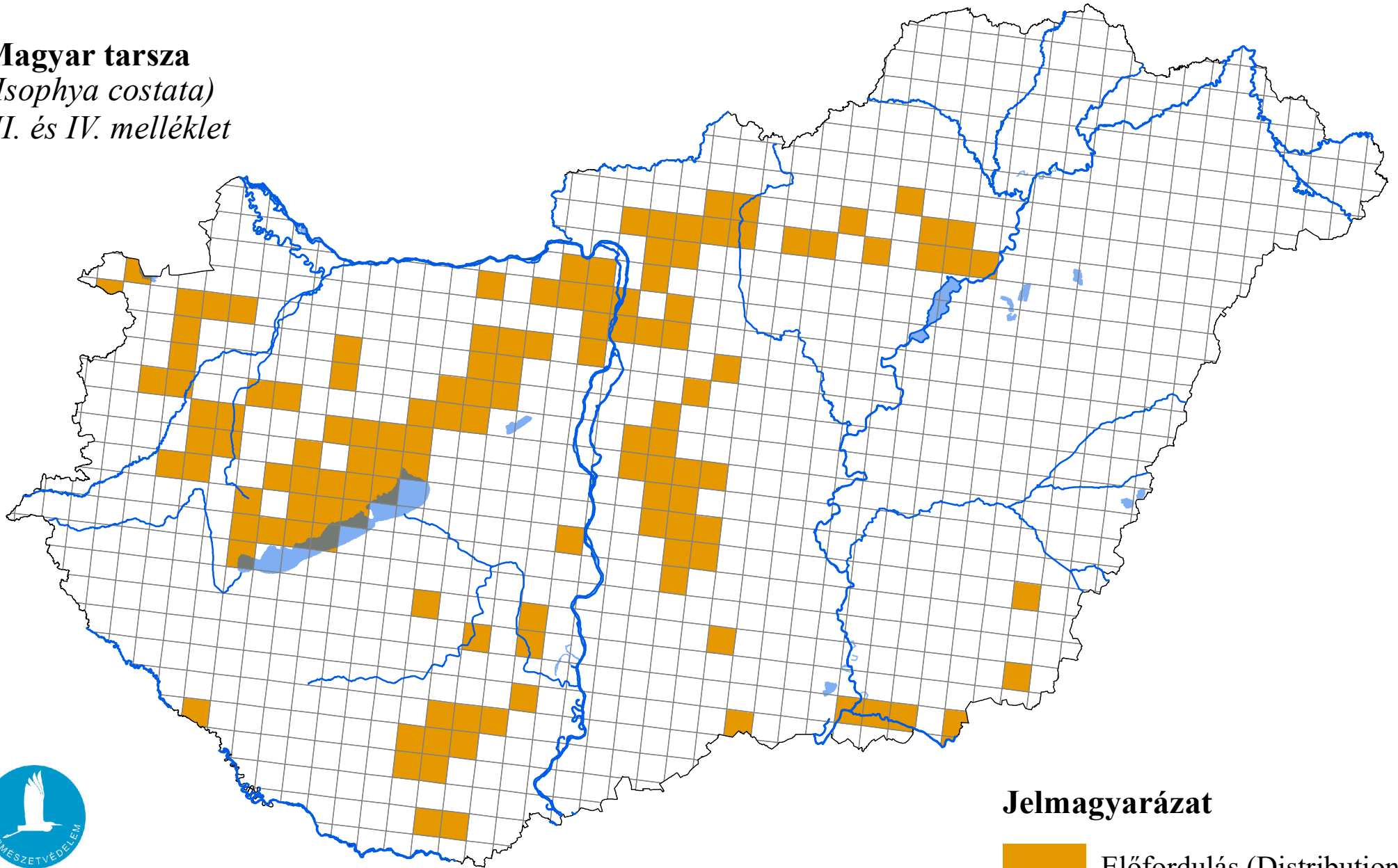
population size (using population unit other than reporting unit in field 6.2) (Optional)	b) Minimum	–
	c) Maximum	–
	d) Best single value	–
12.4 Type of estimate (Optional)	–	
12.5 Population size inside the network Method used	Based mainly on extrapolation from a limited amount of data	
12.6 Short-term trend of population size within the network Direction	stable	
12.7 Short-term trend of population size within the network Method used	Based mainly on extrapolation from a limited amount of data	
12.8 Short-term trend of habitat for the species within the network Direction	stable	
12.9 Short-term trend of habitat for the species within the network Method used	Based mainly on extrapolation from a limited amount of data	
12.10 Additional information (Optional)	–	

13. COMPLEMENTARY INFORMATION

13.1 Justification of % thresholds for trends	–
13.2 Trans-boundary assessment	–
13.3 Other relevant information	–

Az élőhelyvédelmi irányelv 17. cikke alapján készített országjelentés, 2025

Magyar tarsza
(*Isophya costata*)
II. és IV. melléklet



Forrás: Agrárminisztérium,
Természetmegőrzési Főosztály

Jelmagyarázat

 Előfordulás (Distribution)

0 25 50 Kilometers