

PART B - BIRD SPECIES' STATUS AND TRENDS REPORT FORMAT

1. SPECIES INFORMATION

1.1 Member State	HU
1.2 Species code	A868
1.3 EURING code	8830
1.4 Species scientific name	<i>Leiopicus medius</i>
1.5 Subspecific population	
1.6 Alternative species scientific name (Optional)	
1.7 Common name (Optional)	

2. SEASON

2.1 Season	Breeding
2.2 First time reporting	No
2.3 Additional information	

3. POPULATION SIZE

3.1 Year or period	2019-2024	
3.2 Population size	a) Unit	number of pairs
	b) Minimum	23500
	c) Maximum	25500
	d) Best single value	–
3.3 Type of estimate	95% confidence interval	
3.4 Population size Method used	Complete survey or a statistically robust estimate	
3.5 Sources	Szép et. al (2022): Bird Atlas of Hungary (https://mme.hu/madaratlasz)	
3.6 Change and reason for change (since previous report)	Is there a change between reporting periods? yes, due to the use of different method	
	The change is mainly due to: the use of different method	
3.7 Additional information (Optional)		

4. POPULATION TREND

4.1 Short-term trend (last 12 years)

4.1.1 Short-term trend Period	2013-2024	
4.1.2 Short-term trend Direction	uncertain	
4.1.3 Short-term trend Magnitude	a) Minimum	-70
	b) Maximum	32
	c) Best single value	-31
4.1.4 Short-term trend Method used	Based mainly on extrapolation from a limited amount of data	
4.1.5 Sources	Common bird monitoring scheme (MMM) database (https://mmm.mme.hu).	
4.2 Long-term trend (since ca. 1980)		
4.2.1 Long-term trend Period	1980-2024	
4.2.2 Long-term trend Direction	unknown	
4.2.3 Long-term trend Magnitude	a) Minimum	–
	b) Maximum	–
	c) Best single value	–
4.2.4 Long-term trend Method used	Insufficient or no data available	
4.2.5 Sources	Tucker, G. M. – Heath, M. F. (1994): <i>Birds in Europe – Their Conservation Status</i> . RSPB, BirdLife International; Szép et. al (2022): <i>Bird Atlas of Hungary</i> (https://mme.hu/madaratlasz)	
4.3 Additional information (Optional)		

5. BREEDING DISTRIBUTION MAP AND SIZE

5.1 Sensitive species	No
5.2 Year or period	2019-2024
5.3 Breeding distribution map	Yes
5.4 Breeding distribution size	51073
5.5 Breeding distribution Method used	Based mainly on extrapolation from a limited amount of data
5.6 Additional maps Optional	No
5.7 Sources	MME's Bird Atlas Database (https://map.mme.hu) + Bird Atlas of Hungary modelled map
5.8 Additional information Optional	

6. BREEDING DISTRIBUTION TREND

6.1 Short-term trend (last 12 years)

6.1.1 Short-term trend Period	2013-2024	
6.1.2 Short-term trend Direction	stable	
6.1.3 Short-term trend Magnitude	a) Minimum	–
	b) Maximum	–
	c) Best single value	–
6.1.4 Short-term trend Method used	Based mainly on extrapolation from a limited amount of data	
6.1.5 Sources	MME/BirdLife Hungary's Bird Atlas database, Szép et. al (2022): Bird Atlas of Hungary (https://mme.hu/madaratlasz)	
6.2 Long-term trend (since ca. 1980)		
6.2.1 Long-term trend Period	1980-2024	
6.2.2 Long-term trend Direction	increasing	
6.2.3 Long-term trend Magnitude	a) Minimum	0
	b) Maximum	10
	c) Best single value	–
6.2.4 Long-term trend Method used	Based mainly on expert opinion with very limited data	
6.2.5 Sources	Haraszthy L. (szerk.) (1984): Magyarország fészkelő madarai. Natura, Budapest.; Szép et. al (2022): Bird Atlas of Hungary (https://mme.hu/madaratlasz)	
6.3 Additional information Optional	The species is typical of hilly forests, but has also appeared in some lowland habitats in recent decades.	

7. MAIN PRESSURES AND THREATS

7.1 Characterisation of pressures

Pressure	Timing	Scope (proportion of population affected)	Influence (on population or habitat of the species)	Location (where the pressure is primarily operating)	Invasive alien species of Union concern	Other invasive alien species
PB08	ongoing and likely to be in the future	majority 50 – 90%	Medium influence	inside the Member State		
PB09	ongoing and likely to be in the future	majority 50 – 90%	Medium influence	inside the Member State		

7.2 Methods used (Optional) Complete survey or a statistically robust estimate

7.3 Sources of information (Optional) Szép et. al (2022): Bird Atlas of Hungary (<https://mme.hu/madaratlasz>)

7.4 Additional information (Optional)

8. CONSERVATION MEASURES

8.1 Status of measures	Are measures needed? Yes Status of measures: Most/all of measures identified have been taken
8.2 Scope of measures taken	majority 50 - 90%
8.3 Main purpose of the measures taken	A. Indicate the main purpose(s) of measures taken: Maintain current distribution, population and/or habitat for the species B. The main (primary) purpose: Maintain current distribution, population and/or habitat for the species
8.4 Location of the measures	Both inside and outside Natura 2000
8.5 Response to the measures (when the measures start to neutralize the pressure(s) and produce positive effects)	Short-term response (within the current reporting period)
8.6 List of main conservation measures	MB05 MB06
8.7 Additional information (Optional)	Szép T. et al. (szerk.) 2022. Magyarország madáratlasza. 2., javított és kiegészített kiadás. – Agrárminisztérium, MME, Budapest. madaratlasz.mme.hu

9. NATURA 2000 (SPECIAL PROTECTION AREAS (SPAs)) COVERAGE

9.1 Population size inside the Natura 2000 (Special Protection Area (SPA)) network (on national level including all sites where the species is present)	a) Unit	number of pairs
	b) Minimum	10400
	c) Maximum	16000
	d) Best single value	–
9.2 Type of estimate	Best estimate	
9.3 Population size inside the network Method used	Based mainly on expert opinion with very limited data	
9.4 Short-term trend of population size within the network Direction	stable	
9.5 Short-term trend of population size within the network Method used	Based mainly on expert opinion with very limited data	
9.6 Additional information (Optional)	The population estimate follows the Art 12. report for the years 2013-2018. The coverage of SPAs is 63%.	

10. PROGRESS IN WORK RELATED TO INTERNATIONAL SPECIES ACTION PLANS (SAPS), MANAGEMENT PLANS (MPs) AND BRIEF MANAGEMENT STATEMENTS (BMSs)

10.1 Type of international plan	–
10.2 Has a national plan linked to the international Species Action Plan (SAP) / Management Plan (MP) / Brief Management Statement (BMS) been adopted?	–
10.3 Assessment of the effectiveness of Species Action Plans (SAPs) for globally threatened species	–
10.4 Assessment of the effectiveness of Management Plans (MPs) for huntable species in non-Secure status	–
10.5 Sources of further information	–

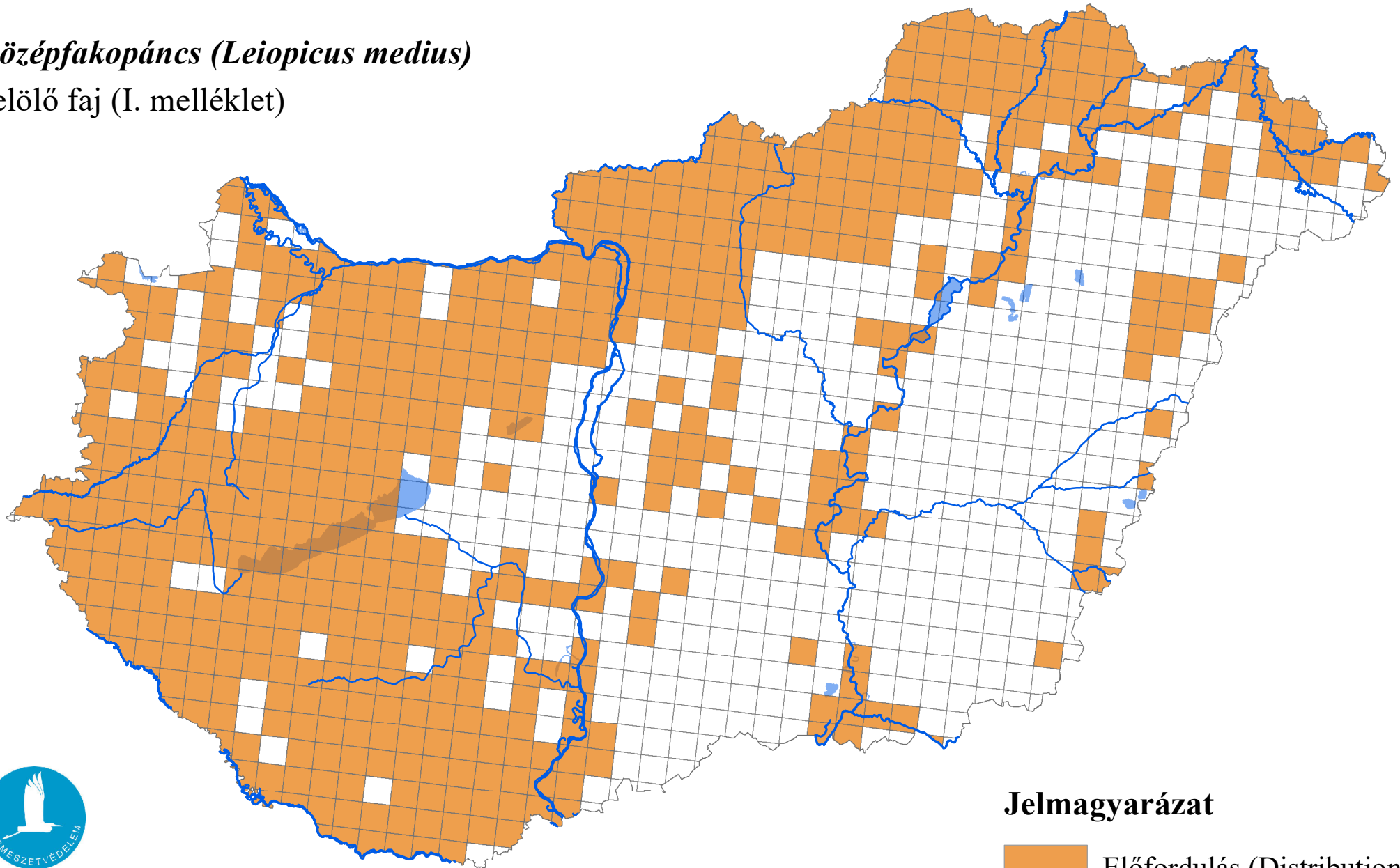
11. INFORMATION RELATED TO ANNEX II SPECIES OF DIRECTIVE 2009/147/EC

11.1 Is the species nationally hunted?	–						
11.2 Hunting bag	a) Unit	–					
	b) Season (optional)	–					
	c) Statistics / numbers (in individuals)	<i>Provide statistics per hunting season or per year (where season is not used) over the reporting period.</i>					
		Season/ year 1	Season/ year 2	Season/ year 3	Season/ year 4	Season/ year 5	Season/ year 6
	Min. (raw, i.e. not rounded)	–	–	–	–	–	–
	Max. (raw, i.e. not rounded)						
	Unknown	–	–	–	–	–	
11.3 Hunting bag Method used	–						
11.4 Additional information Optional							

A madárvédelmi irányelv 12. cikke alapján készített országjelentés, 2025

középfakopáncs (Leiopicus medius)

jelölő faj (I. melléklet)



Forrás: Agrárminisztérium,
Természetmegőrzési Főosztály

Jelmagyarázat

