

# REPORT ON THE 'MAIN RESULTS OF THE SURVEILLANCE UNDER ARTICLE 17' FOR ANNEX II, IV AND V SPECIES OF DIRECTIVE 92/43/EEC

## NATIONAL LEVEL

### 1. GENERAL INFORMATION

|  |                    |
|--|--------------------|
| 1.1 Member State                                   | HU                 |
| 1.2 Species code                                   | 1355               |
| 1.3 Species scientific name                        | <i>Lutra lutra</i> |
| 1.4 Alternative species scientific name (Optional) |                    |
| 1.5 Common name (Optional)                         | Vidra              |

### 2. MAPS

*Distribution of the species within the Member State concerned.*

|                                       |   |
|---------------------------------------|---|
| 2.1 Sensitive species                 | No  |
| 2.2 Year or period                    | 2019–2024   |
| 2.3 Distribution map                  | Yes   |
| 2.4 Distribution map Method used      | Based mainly on extrapolation from a limited amount of data |
| 2.5 Additional maps (Optional)        | –   |
| 2.6 Additional information (Optional) | –   |

### 3. INFORMATION RELATED TO ANNEX V SPECIES (ART. 14 OF DIRECTIVE 92/43/EEC)

|   |   |   |
|---|---|---|
| 3.1 Is the species taken in the wild/exploited?   | No  |   |
| 3.2 Are measures needed for the species (only for species in favourable conservation status)? | No  |   |
| 3.3 Which of the measures in Art. 14 have been taken?   | a) regulations regarding access to property   | – |
|   | b) temporary or local prohibition of the taking of specimens in the wild and exploitation | – |
|   | c) regulation of the periods and/or methods of taking specimens                           | – |

|  |   |  |                   |                   |                   |                   |                   |
|--|---|--|-------------------|-------------------|-------------------|-------------------|-------------------|
|  | d) application of hunting and fishing rules which take account of the conservation of such populations      | –  |                   |                   |                   |                   |                   |
|  | e) establishment of a system of licences for taking specimens or of quotas                                  | –  |                   |                   |                   |                   |                   |
|  | f) regulation of the purchase, sale, offering for sale, keeping for sale or transport for sale of specimens | –  |                   |                   |                   |                   |                   |
|  | g) breeding in captivity of animal species as well as artificial propagation of plant species               | –  |                   |                   |                   |                   |                   |
|  | h) other measures, if yes, describe   | –  |                   |                   |                   |                   |                   |
|  |   |  |                   |                   |                   |                   |                   |
| 3.4 Hunting bag or quantity taken in the wild regardless of conservation status - for Mammals and Acipenseridae (Fish) | a) Unit   | –  |                   |                   |                   |                   |                   |
|  | b) Statistics/<br>quantity<br>taken   | <i>Provide statistics/quantity taken per hunting season or per year (where season is not used) over the reporting period</i> |                   |                   |                   |                   |                   |
|  |   | Season/<br>year 1  | Season/<br>year 2 | Season/<br>year 3 | Season/<br>year 4 | Season/<br>year 5 | Season/<br>year 6 |
|  | Min. (raw, i.e. not rounded)  |  |                   |                   |                   |                   |                   |
|  | Max. (raw, i.e. not rounded)  |  |                   |                   |                   |                   |                   |
|  | Unknown   | –  | –                 | –                 | –                 | –                 | –                 |
| 3.5 Hunting bag or quantity taken in the wild<br>Method used   | –   |  |                   |                   |                   |                   |                   |
| 3.6 Additional information (Optional)  | –   |  |                   |                   |                   |                   |                   |

## BIOGEOGRAPHICAL LEVEL

*Complete for each biogeographical region or marine region concerned.*

### 4. BIOGEOGRAPHICAL AND MARINE REGIONS

|   |   |
|---|---|
| 4.1 Biogeographical or marine region where the species occurs | Pannonian   |
| 4.2 First time reporting                                      | No  |
| 4.3 Additional information                                    | –   |
| 4.4 Sources of information                                    | Lanszki, Z.; Lanszki, J.; Tóth, G.E.; Zeghib, S.; Jakab, F.; Kemenesi, G. (2022): Retrospective Detection and Complete Genomic Sequencing of Canine morbillivirus in Eurasian Otter ( <i>Lutra lutra</i> ) Using Nanopore Technology. <i>Viruses</i> , 14: 1433. <a href="https://doi.org/10.3390/v14071433">https://doi.org/10.3390/v14071433</a> Lanszki, J. 2024. Establishing the complex monitoring of the otter in the Balaton catchment area (A vidraállomány komplex monitorozásának megalapozása a Balaton vízgyűjtőterületén). III. Emlőskutatók Szakmai Napja Konferencia, Eszterházy Károly Katolikus Egyetem, Eger, 2024. január 12-14. Absztrakt kötet. p. 105-106. |

## 5. RANGE

*Range within the biogeographical/marine region concerned.*

|   |   |   |
|---|---|---|
| 5.1 Surface area (km <sup>2</sup> )                                       | 58636   |   |
| 5.2 Change and reason for change in surface area of range and main reason | <p>Is there a change between reporting periods?</p> <p>yes, due to genuine change</p> <p>yes, due to improved knowledge/more accurate data</p> <p>yes, due to the use of different method</p> <p>The change is mainly due to:<br/>the use of a different method</p> |   |
| 5.3 Short-term trend Period   | 2013–2024   |   |
| 5.4 Short-term trend Direction  | stable  |   |
| 5.5 Short-term trend Magnitude (Optional)                                 | a) Estimated Minimum  | –   |
|   | b) Estimated Maximum  | –   |
|   | c) Pre-defined range  | –   |
|   | d) Unknown  | –   |
| 5.6. Short-term trend Magnitude<br>Type of estimate (Optional)            | –   |   |
| 5.7 Short-term trend Method used  | Based mainly on extrapolation from a limited amount of data   |   |
| 5.8 Long-term trend Period (Optional)                                     | –   |   |
| 5.9 Long-term trend Direction (Optional)                                  | –   |   |
| 5.10 Long-term trend Magnitude (Optional)                                 | a) Minimum  | –   |
|   | b) Maximum  | –   |
| 5.11 Long-term trend Method used (Optional)                               | –   |   |
| 5.12 Favourable reference range   | a) –  |   |
|   | b) <i>if a precise favourable reference range is unknown indicate if the range is:</i><br>approximately equal to the favourable reference range (less than 2% smaller)  |   |
|   | c) –  |   |
|   | d) <i>Indicate method used to set reference value (multiple methods can be chosen)</i>  | <i>Indicate the quality of information available:</i> |
|   | Reference-based approach  | Moderate  |
| 5.13 Range when Directive came into force (Optional)                      | –   |   |

|  |   |
|--|---|
| 5.14 Additional information (Optional) | – |
|--|---|

## 6. POPULATION

*Population within the biogeographical/marine region concerned.*

|   |   |                       |
|---|---|-----------------------|
| 6.1 Year or period  | 2019–2024   |                       |
| 6.2 Population size (in reporting unit)   | a) Unit   | number of individuals |
|   | b) Minimum  | –                     |
|   | c) Maximum  | –                     |
|   | d) Best single value  | 3680                  |
|   | e) Class  |                       |
| 6.3 Type of estimate  | minimum   |                       |
| 6.4 Quality of extrapolation to reporting unit (Optional)                                   | –   |                       |
| 6.5 Additional population size (using population unit other than reporting unit) (Optional) | a) Unit   | –                     |
|   | b) Minimum  | –                     |
|   | c) Maximum  | –                     |
|   | d) Best single value  | –                     |
| 6.6 Type of estimate (Optional)   | –   |                       |
| 6.7 Population size Method used   | Based mainly on extrapolation from a limited amount of data                             |                       |
| 6.8 Change and reason for change in population size and main reason                         | Is there a change between reporting periods?<br>yes, due to the use of different method |                       |
|   | The change is mainly due to:<br>the use of a different method                           |                       |
| 6.9 Short-term trend Period   | 2013–2024   |                       |
| 6.10 Short-term trend Direction   | stable  |                       |
| 6.11 Short-term trend Magnitude   | a) Estimated Minimum  | –                     |
|   | b) Estimated Maximum  | –                     |
|   | c) Pre-defined range  | 0 – 12%               |
|   | d) Unknown  | –                     |
| 6.12 Short-term trend Magnitude Type of estimate  | Best estimate   |                       |

|  |   |   |
|--|---|---|
| 6.13 Short-term trend Method used                              | Based mainly on expert opinion with very limited data   |   |
| 6.14 Long-term trend Period (Optional)                         | –   |   |
| 6.15 Long-term trend Direction (Optional)                      | –   |   |
| 6.16 Long-term trend Magnitude (Optional)                      | a) Minimum  | –   |
|  | b) Maximum  | –   |
|  | c) Confidence interval  | –   |
| 6.17 Long-term trend Method used (Optional)                    | –   |   |
| 6.18 Favourable reference population                           | a) <i>Population size (with unit):</i>  |   |
|  | b) <i>if a precise favourable reference population is unknown indicate if the population is:</i><br>approximately equal to the favourable reference population (less than 5% smaller) |   |
|  | c) <i>Indicate if favourable reference population is unknown:</i><br>–  |   |
|  | d) <i>Indicate method used to set reference value (multiple methods can be chosen)</i>  | <i>Indicate the quality of information available:</i> |
|  | Reference-based approach  | Moderate  |
| 6.19 Population size when Directive came into force (Optional) | –   |   |
| 6.20 Additional Information (Optional)                         |   |   |

## 7. HABITAT FOR THE SPECIES

|   |  |
|---|--|
| 7.1 Sufficiency of area and quality of occupied habitat | a) Is area of occupied habitat sufficient (for long-term survival)?<br>Yes   |
|   | b) Is quality of occupied habitat sufficient (for long-term survival)?<br>Yes  |
|   | c) If NO to a) is there a sufficiently large area of unoccupied habitat of suitable quality (for long-term survival)?<br>– |
|   | –  |

|  |   |  |
|--|---|--|
| 7.2 Sufficiency of area and quality of occupied habitat<br>Method used | Area of habitat:<br>Based mainly on expert opinion with very limited data | Quality of habitat:<br>Based mainly on expert opinion with very limited data |
| 7.3 Short-term trend<br>Period   | 2013–2024   |  |
| 7.4 Short-term trend<br>Direction                                      | stable  |  |
| 7.5 Short-term trend<br>Method used                                    | Based mainly on extrapolation from a limited amount of data               |  |
| 7.6 Long-term trend<br>Period (Optional)                               | –   |  |
| 7.7 Long-term trend<br>Direction (Optional)                            | –   |  |
| 7.8 Long-term trend<br>Method used (Optional)                          | –   |  |
| 7.9 Additional information<br>(Optional)                               | –   |  |

## 8. MAIN PRESSURES AND THREATS

### 8.1 Characterisation of pressures

| Pressure  | Timing                                 | Scope (proportion of population affected) | Influence (on population or habitat of the species) | Invasive alien species of Union concern | Other invasive alien species |
|---|--|---|---|---|------------------------------|
| <b>PA15</b><br>Agriculture - Use of other pest control methods in agriculture (excl. tillage) | ongoing and likely to be in the future | minority <50%                             | Medium influence                                    |   |                              |
| <b>PE01</b><br>Transport - Roads, paths, railroads and related infrastructure                 | ongoing and likely to be in the future | minority <50%                             | Medium influence                                    |   |                              |
| <b>PG11</b><br>Species exploitation - Illegal shooting/killing                                | ongoing and likely to be in the future | minority <50%                             | Medium influence                                    |   |                              |
| <b>PJ10</b><br>Climate change - Change of habitat location, size and/or quality               | ongoing and likely to be in the future | minority <50%                             | Medium influence                                    |   |                              |

### 8.2 Methods used (Optional)

–

### 8.3 Sources of information (Optional)

–

### 8.4 Additional information (Optional)

Threats that may be important locally do not threaten the national level population, so we have listed few and only moderately important factors, although the impact may be strong in some local areas.

## 9. CONSERVATION MEASURES

|   |   |
|---|---|
| 9.1 Status of measures  | Are measures needed?<br>Yes<br>Status of measures:<br>Part of measures identified have been taken   |
| 9.2 Scope of measures taken   | <50%  |
| 9.3 Main purpose of the measures taken  | A. Indicate the main purpose(s) of measures taken:<br>Maintain the current range, population and/or habitat for the species<br>B. The main (primary) purpose:<br>Maintain current state |
| 9.4 Location of the measures taken  | Both inside and outside Natura 2000   |
| 9.5 Response to the measures<br><i>(when the measures start to neutralize the pressure(s) and produce positive effects)</i> | Short-term response (within the current reporting period, 2019–2024)  |
| 9.6 List of main conservation measures  | ME01 – Reduce impact of transport operation and infrastructure<br>MS03 – Restoration of habitat of species from the directives  |
| 9.7 Additional information (Optional)   | –   |

## 10. FUTURE PROSPECTS

|  |                           |      |
|--|---------------------------|------|
| 10.1 Future prospects of parameters    | a) Range                  | Good |
|  | b) Population             | Good |
|  | c) Habitat of the species | Good |
| 10.2 Additional information (Optional) | –                         |      |

## 11. CONCLUSIONS

### *Assessment of conservation status at end of reporting period*

|  |                 |
|--|-----------------|
| 11.1 Range                                     | Favourable (FV) |
| 11.2 Population                                | Favourable (FV) |
| 11.3 Habitat for the species                   | Favourable (FV) |
| 11.4 Future prospects                          | Favourable (FV) |
| 11.5 Overall assessment of Conservation Status | Favourable (FV) |

|   |   |                            |
|---|---|----------------------------|
| 11.6 Overall trend in Conservation Status   | stable  |                            |
| 11.7 Change and reasons for change in conservation status and conservation status trend | Overall assessment of conservation status (11.5)  |                            |
|   | <i>Indicate whether there is a change from the previous reporting round and (if yes) the nature of that change.</i> | no, there is no difference |
|   | <i>The change is mainly due to:</i>   |                            |
|   | Overall trend in conservation status (11.6)   |                            |
|   | <i>Indicate whether there is a change from the previous reporting round and (if yes) the nature of that change.</i> | no, there is no difference |
|   | <i>The change is mainly due to:</i>   |                            |
| 11.8 Additional information (Optional)  | –   |                            |

## 12. NATURA 2000 (PROPOSED SITES OF COMMUNITY IMPORTANCE (PSCIs), SITES OF COMMUNITY IMPORTANCE (SCIs) AND SPECIAL AREAS OF CONSERVATION (SACs) COVERAGE FOR ANNEX II SPECIES OF DIRECTIVE 92/43/EEC

|   |   |                       |
|---|---|-----------------------|
| 12.1 Population size inside the pSCIs, SCIs and SACs network (on the biogeographical/marine level including all sites where the species is present) | a) Unit   | number of individuals |
|   | b) Minimum  | –                     |
|   | c) Maximum  | –                     |
|   | d) Best single value                                  | 2508                  |
| 12.2 Type of estimate   | minimum   |                       |
| 12.3 Additional population size (using population unit other than reporting unit in field 6.2) (Optional)   | a) Unit   | –                     |
|   | b) Minimum  | –                     |
|   | c) Maximum  | –                     |
|   | d) Best single value                                  | –                     |
| 12.4 Type of estimate (Optional)  | –   |                       |
| 12.5 Population size inside the network<br>Method used  | Based mainly on expert opinion with very limited data |                       |

|  |   |
|--|---|
| 12.6 Short-term trend of population size within the network<br>Direction           | stable  |
| 12.7 Short-term trend of population size within the network<br>Method used         | Based mainly on expert opinion with very limited data |
| 12.8 Short-term trend of habitat for the species within the network<br>Direction   | stable  |
| 12.9 Short-term trend of habitat for the species within the network<br>Method used | Based mainly on expert opinion with very limited data |
| 12.10 Additional information (Optional)  | –   |

### 13. COMPLEMENTARY INFORMATION

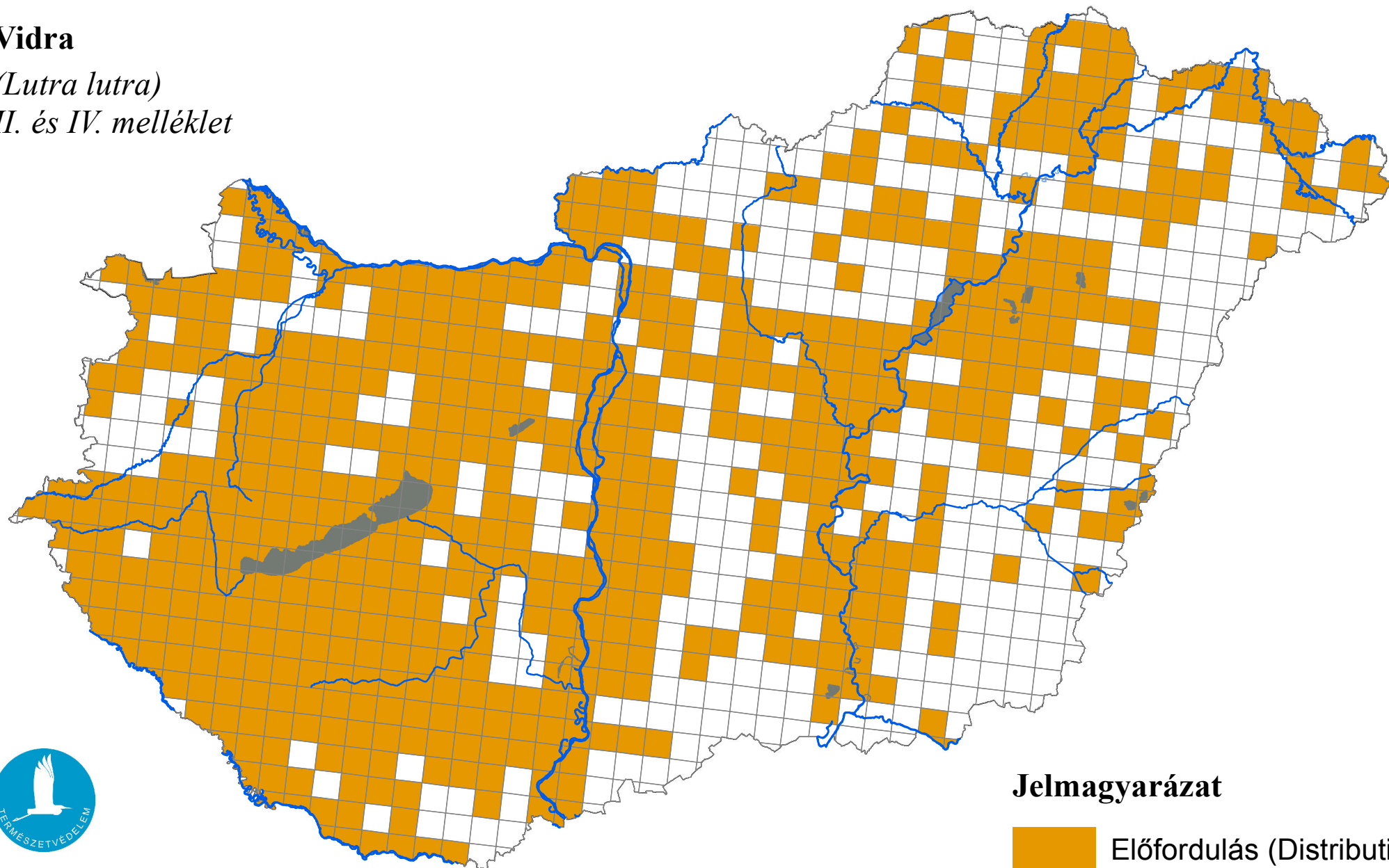
|   |   |
|---|---|
| 13.1 Justification of % thresholds for trends | – |
| 13.2 Trans-boundary assessment                | – |
| 13.3 Other relevant information               | – |

# Az élőhelyvédelmi irányelv 17. cikke szerinti országjelentés, 2025

## Vidra

(*Lutra lutra*)

II. és IV. melléklet



Forrás: Agrárminisztérium,  
Természetmegőrzési Főosztály

### Jelmagyarázat

 Előfordulás (Distribution)

0 25 50 Kilometers  
