

## PART B - BIRD SPECIES' STATUS AND TRENDS REPORT FORMAT

### 1. SPECIES INFORMATION

|                                                    |                        |
|----------------------------------------------------|------------------------|
| 1.1 Member State                                   | HU                     |
| 1.2 Species code                                   | A889                   |
| 1.3 EURING code                                    | 1820                   |
| 1.4 Species scientific name                        | <i>Mareca strepera</i> |
| 1.5 Subspecific population                         |                        |
| 1.6 Alternative species scientific name (Optional) |                        |
| 1.7 Common name (Optional)                         |                        |

### 2. SEASON

|                            |          |
|----------------------------|----------|
| 2.1 Season                 | Breeding |
| 2.2 First time reporting   | No       |
| 2.3 Additional information |          |

### 3. POPULATION SIZE

|                                                          |                                                                            |                 |
|----------------------------------------------------------|----------------------------------------------------------------------------|-----------------|
| 3.1 Year or period                                       | 2019-2024                                                                  |                 |
| 3.2 Population size                                      | a) Unit                                                                    | number of pairs |
|                                                          | b) Minimum                                                                 | 100             |
|                                                          | c) Maximum                                                                 | 400             |
|                                                          | d) Best single value                                                       | –               |
| 3.3 Type of estimate                                     | Best estimate                                                              |                 |
| 3.4 Population size Method used                          | Based mainly on expert opinion with very limited data                      |                 |
| 3.5 Sources                                              | Expert opinions (BirdLife Hungary Waterbird Specialist Group)              |                 |
| 3.6 Change and reason for change (since previous report) | Is there a change between reporting periods?<br>yes, due to genuine change |                 |
|                                                          | The change is mainly due to:<br>genuine change                             |                 |
| 3.7 Additional information (Optional)                    |                                                                            |                 |

### 4. POPULATION TREND

4.1 Short-term trend (last 12 years)

|                                             |                                                                                                                                                                                                                                   |     |
|---------------------------------------------|-----------------------------------------------------------------------------------------------------------------------------------------------------------------------------------------------------------------------------------|-----|
| 4.1.1 Short-term trend Period               | 2013-2024                                                                                                                                                                                                                         |     |
| 4.1.2 Short-term trend Direction            | fluctuating                                                                                                                                                                                                                       |     |
| 4.1.3 Short-term trend Magnitude            | a) Minimum                                                                                                                                                                                                                        | –   |
|                                             | b) Maximum                                                                                                                                                                                                                        | –   |
|                                             | c) Best single value                                                                                                                                                                                                              | –   |
| 4.1.4 Short-term trend Method used          | Based mainly on expert opinion with very limited data                                                                                                                                                                             |     |
| 4.1.5 Sources                               | Expert opinions                                                                                                                                                                                                                   |     |
| <b>4.2 Long-term trend (since ca. 1980)</b> |                                                                                                                                                                                                                                   |     |
| 4.2.1 Long-term trend Period                | 1980-2024                                                                                                                                                                                                                         |     |
| 4.2.2 Long-term trend Direction             | increasing                                                                                                                                                                                                                        |     |
| 4.2.3 Long-term trend Magnitude             | a) Minimum                                                                                                                                                                                                                        | 100 |
|                                             | b) Maximum                                                                                                                                                                                                                        | 300 |
|                                             | c) Best single value                                                                                                                                                                                                              | –   |
| 4.2.4 Long-term trend Method used           | Based mainly on expert opinion with very limited data                                                                                                                                                                             |     |
| 4.2.5 Sources                               | Tucker, G. M. – Heath, M. F. (1994): Birds in Europe – Their Conservation Status. RSPB, BirdLife International; Szép et. al (2022): Bird Atlas of Hungary ( <a href="https://mme.hu/madaratlasz">https://mme.hu/madaratlasz</a> ) |     |
| 4.3 Additional information (Optional)       |                                                                                                                                                                                                                                   |     |

## 5. BREEDING DISTRIBUTION MAP AND SIZE

|                                       |                                                                                                                      |
|---------------------------------------|----------------------------------------------------------------------------------------------------------------------|
| 5.1 Sensitive species                 | No                                                                                                                   |
| 5.2 Year or period                    | 2019-2024                                                                                                            |
| 5.3 Breeding distribution map         | Yes                                                                                                                  |
| 5.4 Breeding distribution size        | 4808                                                                                                                 |
| 5.5 Breeding distribution Method used | Complete survey or a statistically robust estimate                                                                   |
| 5.6 Additional maps Optional          | No                                                                                                                   |
| 5.7 Sources                           | MME's Bird Atlas Database ( <a href="https://map.mme.hu">https://map.mme.hu</a> ) - probably and conformed breedings |
| 5.8 Additional information Optional   |                                                                                                                      |

## 6. BREEDING DISTRIBUTION TREND

6.1 Short-term trend (last 12 years)

|                                      |                                                                                                                                                                                                      |    |
|--------------------------------------|------------------------------------------------------------------------------------------------------------------------------------------------------------------------------------------------------|----|
| 6.1.1 Short-term trend Period        | 2013-2024                                                                                                                                                                                            |    |
| 6.1.2 Short-term trend Direction     | fluctuating                                                                                                                                                                                          |    |
| 6.1.3 Short-term trend Magnitude     | a) Minimum                                                                                                                                                                                           | –  |
|                                      | b) Maximum                                                                                                                                                                                           | –  |
|                                      | c) Best single value                                                                                                                                                                                 | –  |
| 6.1.4 Short-term trend Method used   | Based mainly on extrapolation from a limited amount of data                                                                                                                                          |    |
| 6.1.5 Sources                        | MME/BirdLife Hungary's Bird Atlas database, Szép et. al (2022): Bird Atlas of Hungary ( <a href="https://mme.hu/madaratlasz">https://mme.hu/madaratlasz</a> )                                        |    |
| 6.2 Long-term trend (since ca. 1980) |                                                                                                                                                                                                      |    |
| 6.2.1 Long-term trend Period         | 1980-2024                                                                                                                                                                                            |    |
| 6.2.2 Long-term trend Direction      | increasing                                                                                                                                                                                           |    |
| 6.2.3 Long-term trend Magnitude      | a) Minimum                                                                                                                                                                                           | 20 |
|                                      | b) Maximum                                                                                                                                                                                           | 40 |
|                                      | c) Best single value                                                                                                                                                                                 | –  |
| 6.2.4 Long-term trend Method used    | Based mainly on expert opinion with very limited data                                                                                                                                                |    |
| 6.2.5 Sources                        | Haraszthy L. (szerk.) (1984): Magyarország fészkelő madarai. Natura, Budapest.;<br>Szép et. al (2022): Bird Atlas of Hungary ( <a href="https://mme.hu/madaratlasz">https://mme.hu/madaratlasz</a> ) |    |
| 6.3 Additional information Optional  |                                                                                                                                                                                                      |    |

## 7. MAIN PRESSURES AND THREATS

### 7.1 Characterisation of pressures

| Pressure    | Timing                                 | Scope (proportion of population affected) | Influence (on population or habitat of the species) | Location (where the pressure is primarily operating) | Invasive alien species of Union concern | Other invasive alien species |
|-------------|----------------------------------------|-------------------------------------------|-----------------------------------------------------|------------------------------------------------------|-----------------------------------------|------------------------------|
| <b>PA06</b> | ongoing and likely to be in the future | majority 50 – 90%                         | Medium influence                                    | inside the Member State                              |                                         |                              |
| <b>PG06</b> | ongoing and likely to be in the future | majority 50 – 90%                         | High influence                                      | inside the Member State                              |                                         |                              |
| <b>PG11</b> | ongoing and likely to be in the future | minority <50%                             | Low influence                                       | inside the Member State                              |                                         |                              |
| <b>PI02</b> | ongoing and likely to be in the future | majority 50 – 90%                         | Medium influence                                    | inside the Member State                              |                                         |                              |
| <b>PJ03</b> | ongoing and likely to be in the future | majority 50 – 90%                         | Medium influence                                    | inside the Member State                              |                                         |                              |
| <b>PL06</b> | ongoing and likely to be in the future | majority 50 – 90%                         | High influence                                      | inside the Member State                              |                                         |                              |

|                                       |                                                                                                                   |                   |                  |                         |  |  |
|---------------------------------------|-------------------------------------------------------------------------------------------------------------------|-------------------|------------------|-------------------------|--|--|
| <b>PM07</b>                           | ongoing and likely to be in the future                                                                            | majority 50 – 90% | Medium influence | inside the Member State |  |  |
| 7.2 Methods used (Optional)           | Based mainly on expert opinion with very limited data                                                             |                   |                  |                         |  |  |
| 7.3 Sources of information (Optional) | Szép et. al (2022): Bird Atlas of Hungary ( <a href="https://mme.hu/madaratlasz">https://mme.hu/madaratlasz</a> ) |                   |                  |                         |  |  |
| 7.4 Additional information (Optional) |                                                                                                                   |                   |                  |                         |  |  |

## 8. CONSERVATION MEASURES

|                                                                                                                   |                                                                                                                                                                                              |
|-------------------------------------------------------------------------------------------------------------------|----------------------------------------------------------------------------------------------------------------------------------------------------------------------------------------------|
| 8.1 Status of measures                                                                                            | <p>Are measures needed?</p> <p>Yes</p> <p>Status of measures:</p> <p>Most/all of measures identified have been taken</p>                                                                     |
| 8.2 Scope of measures taken                                                                                       | majority 50 - 90%                                                                                                                                                                            |
| 8.3 Main purpose of the measures taken                                                                            | <p>A. Indicate the main purpose(s) of measures taken:</p> <p>Restore habitat of the species</p> <p>B. The main (primary) purpose:</p> <p>Restore habitat of the species</p>                  |
| 8.4 Location of the measures                                                                                      | Both inside and outside Natura 2000                                                                                                                                                          |
| 8.5 Response to the measures (when the measures start to neutralize the pressure(s) and produce positive effects) | Medium-term response (within the next two reporting periods)                                                                                                                                 |
| 8.6 List of main conservation measures                                                                            | MA05<br>MA13<br>MG01<br>MG02<br>MG03<br>MG04<br>MI03<br>MJ01<br>MK02                                                                                                                         |
| 8.7 Additional information Optional                                                                               | Szép T. et al. (szerk.) 2022. Magyarország madaratlasza. 2., javított és kiegészített kiadás. – Agrárminisztérium, MME, Budapest. <a href="http://madaratlasz.mme.hu">madaratlasz.mme.hu</a> |

## 9. NATURA 2000 (SPECIAL PROTECTION AREAS (SPAS)) COVERAGE

|                                                                                                                                                         |                         |                 |
|---------------------------------------------------------------------------------------------------------------------------------------------------------|-------------------------|-----------------|
| 9.1 Population size inside the Natura 2000 (Special Protection Area (SPA)) network (on national level including all sites where the species is present) | a) Unit                 | number of pairs |
|                                                                                                                                                         | b) Minimum              | 90              |
|                                                                                                                                                         | c) Maximum              | 360             |
|                                                                                                                                                         | d) Best single value    | –               |
| 9.2 Type of estimate                                                                                                                                    | 95% confidence interval |                 |

|                                                                           |                                                                                                          |
|---------------------------------------------------------------------------|----------------------------------------------------------------------------------------------------------|
| 9.3 Population size inside the network<br>Method used                     | Complete survey or a statistically robust estimate                                                       |
| 9.4 Short-term trend of population size within the network<br>Direction   | fluctuating                                                                                              |
| 9.5 Short-term trend of population size within the network<br>Method used | Complete survey or a statistically robust estimate                                                       |
| 9.6 Additional information (Optional)                                     | The population estimate follows the Art 12. report for the years 2013-2018. The coverage of SPAs is 90%. |

## 10. PROGRESS IN WORK RELATED TO INTERNATIONAL SPECIES ACTION PLANS (SAPs), MANAGEMENT PLANS (MPs) AND BRIEF MANAGEMENT STATEMENTS (BMSS)

|                                                                                                                                                        |   |
|--------------------------------------------------------------------------------------------------------------------------------------------------------|---|
| 10.1 Type of international plan                                                                                                                        | – |
| 10.2 Has a national plan linked to the international Species Action Plan (SAP) / Management Plan (MP) / Brief Management Statement (BMS) been adopted? | – |
| 10.3 Assessment of the effectiveness of Species Action Plans (SAPs) for globally threatened species                                                    | – |
| 10.4 Assessment of the effectiveness of Management Plans (MPs) for huntable species in non-Secure status                                               | – |
| 10.5 Sources of further information                                                                                                                    | – |

## 11. INFORMATION RELATED TO ANNEX II SPECIES OF DIRECTIVE 2009/147/EC

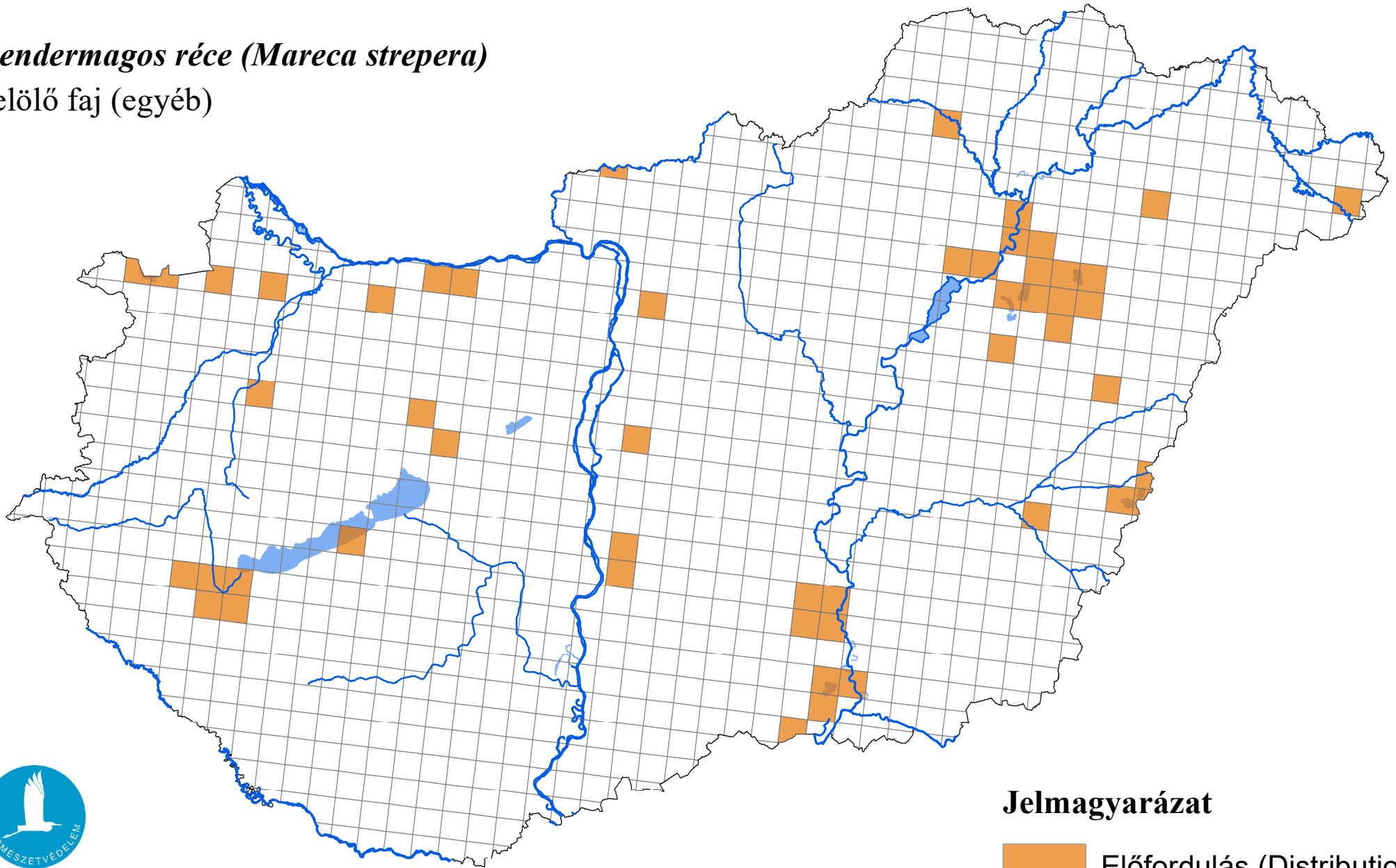
|                                        |                                          |                                                                                                                |                   |                   |                   |                   |                   |
|----------------------------------------|------------------------------------------|----------------------------------------------------------------------------------------------------------------|-------------------|-------------------|-------------------|-------------------|-------------------|
| 11.1 Is the species nationally hunted? | No                                       |                                                                                                                |                   |                   |                   |                   |                   |
| 11.2 Hunting bag                       | a) Unit                                  | Individuals                                                                                                    |                   |                   |                   |                   |                   |
|                                        | b) Season (optional)                     | –                                                                                                              |                   |                   |                   |                   |                   |
|                                        | c) Statistics / numbers (in individuals) | <i>Provide statistics per hunting season or per year (where season is not used) over the reporting period.</i> |                   |                   |                   |                   |                   |
|                                        |                                          | Season/<br>year 1                                                                                              | Season/<br>year 2 | Season/<br>year 3 | Season/<br>year 4 | Season/<br>year 5 | Season/<br>year 6 |
|                                        | Min. (raw, i.e. not rounded)             | –                                                                                                              | –                 | –                 | –                 | –                 | –                 |

|                                            |                                    |   |   |   |   |   |   |
|--------------------------------------------|------------------------------------|---|---|---|---|---|---|
|                                            | Max. (raw,<br>i.e. not<br>rounded) |   |   |   |   |   |   |
|                                            | Unknown                            | – | – | – | – | – | – |
| 11.3 Hunting bag<br>Method used            | –                                  |   |   |   |   |   |   |
| 11.4 Additional<br>information<br>Optional |                                    |   |   |   |   |   |   |

# A madárvédelmi irányelv 12. cikke alapján készített országjelentés, 2025

*kendermagos réce (Mareca strepera)*

jelölő faj (egyéb)



Forrás: Agrárminisztérium,  
Természetmegőrzési Főosztály

## Jelmagyarázat

