

REPORT ON THE 'MAIN RESULTS OF THE SURVEILLANCE UNDER ARTICLE 17' FOR ANNEX II, IV AND V SPECIES OF DIRECTIVE 92/43/EEC

NATIONAL LEVEL

1. GENERAL INFORMATION

1.1 Member State	HU
1.2 Species code	1330
1.3 Species scientific name	<i>Myotis mystacinus</i>
1.4 Alternative species scientific name (Optional)	
1.5 Common name (Optional)	Bajuszos denevér

2. MAPS

Distribution of the species within the Member State concerned.

2.1 Sensitive species	No
2.2 Year or period	2019–2024
2.3 Distribution map	Yes
2.4 Distribution map Method used	Based mainly on expert opinion with very limited data
2.5 Additional maps (Optional)	–
2.6 Additional information (Optional)	–

3. INFORMATION RELATED TO ANNEX V SPECIES (ART. 14 OF DIRECTIVE 92/43/EEC)

3.1 Is the species taken in the wild/exploited?	No	
3.2 Are measures needed for the species (only for species in favourable conservation status)?	No	
3.3 Which of the measures in Art. 14 have been taken?	a) regulations regarding access to property	–
	b) temporary or local prohibition of the taking of specimens in the wild and exploitation	–
	c) regulation of the periods and/or methods of taking specimens	–

	d) application of hunting and fishing rules which take account of the conservation of such populations	–					
	e) establishment of a system of licences for taking specimens or of quotas	–					
	f) regulation of the purchase, sale, offering for sale, keeping for sale or transport for sale of specimens	–					
	g) breeding in captivity of animal species as well as artificial propagation of plant species	–					
	h) other measures, if yes, describe	–					
3.4 Hunting bag or quantity taken in the wild regardless of conservation status - for Mammals and Acipenseridae (Fish)	a) Unit	–					
	b) Statistics/ quantity taken	<i>Provide statistics/quantity taken per hunting season or per year (where season is not used) over the reporting period</i>					
		Season/ year 1	Season/ year 2	Season/ year 3	Season/ year 4	Season/ year 5	Season/ year 6
	Min. (raw, i.e. not rounded)						
	Max. (raw, i.e. not rounded)						
	Unknown	–	–	–	–	–	–
3.5 Hunting bag or quantity taken in the wild Method used	–						
3.6 Additional information (Optional)	–						

BIOGEOGRAPHICAL LEVEL

Complete for each biogeographical region or marine region concerned.

4. BIOGEOGRAPHICAL AND MARINE REGIONS

4.1 Biogeographical or marine region where the species occurs	Pannonian
4.2 First time reporting	No
4.3 Additional information	–

4.4 Sources of information	<p>Boldogh S.A.; Estók P.; Hegyi Z.; Dobrosi D.; Görföl T.; Bihari Z.; Dombi I.; Gombkötő P.; Paulovics P.; Mészáros J.; Máté B.; Bereczky A.; Szatyor M.; Gécz I. 2019. “Hogy vagytok denevérek?” – Az országos monitoring program első 15 évének néhány eredménye. Pp. 97-122. In: Váczi, O.; Varga, I. & Bakó, B. (szerk.): A Nemzeti Biodiverzitás-monitorozó Rendszer eredményei II. – Gerinces állatok. Körös-Maros Nemzeti Park Igazgatóság, Szarvas. Boldogh S.A. 2023: A Nemzeti Biodiverzitás-monitorozó Rendszer (NBmR) Denevérmonitorozó Programjának országos koordinációja, az eredmények értékelése (2023). Duna-Ipoly Nemzeti Park Igazgatóság, Budapest. 22 pp. (szakmai jelentés) Boldogh S.A. 2024: A Nemzeti Biodiverzitás-monitorozó Rendszer (NBmR) Denevérmonitorozó Programjának országos koordinációja, az eredmények értékelése (2024). Duna-Ipoly Nemzeti Park Igazgatóság, Budapest. 24 pp. (kézirat) ESTÓK, P., GÖRFÖL, T. 2016: Denevérek az erdei életközösségekben. (Bats in forests.) – In: KORDA, M. (ed.): Az erdőgazdálkodás hatása az erdők biológiai sokféleségére. [The impacts of silviculture on the biodiversity of forests.] Duna-Ipoly Nemzeti Park Igazgatóság, Budapest, pp. 311–322.</p>
----------------------------	---

5. RANGE

Range within the biogeographical/marine region concerned.

5.1 Surface area (km ²)	34342	
5.2 Change and reason for change in surface area of range and main reason	Is there a change between reporting periods? yes, due to improved knowledge/more accurate data	
	The change is mainly due to: improved knowledge or more accurate data	
5.3 Short-term trend Period	2013–2024	
5.4 Short-term trend Direction	uncertain	
5.5 Short-term trend Magnitude (Optional)	a) Estimated Minimum	–
	b) Estimated Maximum	–
	c) Pre-defined range	–
	d) Unknown	–
5.6. Short-term trend Magnitude Type of estimate (Optional)	–	
5.7 Short-term trend Method used	Based mainly on expert opinion with very limited data	
5.8 Long-term trend Period (Optional)	–	
5.9 Long-term trend Direction (Optional)	–	
5.10 Long-term trend Magnitude (Optional)	a) Minimum	–
	b) Maximum	–

5.11 Long-term trend Method used (Optional)	–	
5.12 Favourable reference range	a) –	
	b) <i>if a precise favourable reference range is unknown indicate if the range is:</i> between 2% and 10% smaller than the FRR	
	c) –	
	d) <i>Indicate method used to set reference value (multiple methods can be chosen)</i>	<i>Indicate the quality of information available:</i>
	Expert opinion	
5.13 Range when Directive came into force (Optional)	–	
5.14 Additional information (Optional)	–	

6. POPULATION

Population within the biogeographical/marine region concerned.

6.1 Year or period	2019–2024	
6.2 Population size <i>(in reporting unit)</i>	a) Unit	number of individuals
	b) Minimum	10000
	c) Maximum	25000
	d) Best single value	–
	e) Class	
6.3 Type of estimate	Best estimate	
6.4 Quality of extrapolation to reporting unit (Optional)	–	
6.5 Additional population size (using population unit other than reporting unit) (Optional)	a) Unit	–
	b) Minimum	–
	c) Maximum	–
	d) Best single value	–
6.6 Type of estimate (Optional)	–	
6.7 Population size Method used	Based mainly on expert opinion with very limited data	
6.8 Change and reason for change in population size and main reason	Is there a change between reporting periods? yes, due to improved knowledge/more accurate data	
	The change is mainly due to: improved knowledge or more accurate data	

6.9 Short-term trend Period	2013–2024	
6.10 Short-term trend Direction	unknown	
6.11 Short-term trend Magnitude	a) Estimated Minimum	–
	b) Estimated Maximum	–
	c) Pre-defined range	–
	d) Unknown	Unknown
6.12 Short-term trend Magnitude Type of estimate	Best estimate	
6.13 Short-term trend Method used	Based mainly on expert opinion with very limited data	
6.14 Long-term trend Period (Optional)	–	
6.15 Long-term trend Direction (Optional)	–	
6.16 Long-term trend Magnitude (Optional)	a) Minimum	–
	b) Maximum	–
	c) Confidence interval	–
6.17 Long-term trend Method used (Optional)	–	
6.18 Favourable reference population	<i>a) Population size (with unit):</i>	
	<i>b) if a precise favourable reference population is unknown indicate if the population is:</i> –	
	<i>c) Indicate if favourable reference population is unknown:</i> Unknown	
	<i>d) Indicate method used to set reference value (multiple methods can be chosen)</i>	<i>Indicate the quality of information available:</i>
	Reference-based approach	Low
Expert opinion		
6.19 Population size when Directive came into force (Optional)	–	

6.20 Additional Information (Optional)

7. HABITAT FOR THE SPECIES

7.1 Sufficiency of area and quality of occupied habitat	<p>a) Is area of occupied habitat sufficient (for long-term survival)? Unknown</p> <p>b) Is quality of occupied habitat sufficient (for long-term survival)? No</p> <p>c) If NO to a) is there a sufficiently large area of unoccupied habitat of suitable quality (for long-term survival)? –</p>	
7.2 Sufficiency of area and quality of occupied habitat Method used	<p>Area of habitat: Based mainly on expert opinion with very limited data</p>	<p>Quality of habitat: Based mainly on expert opinion with very limited data</p>
7.3 Short-term trend Period	2013–2024	
7.4 Short-term trend Direction	unknown	
7.5 Short-term trend Method used	Based mainly on expert opinion with very limited data	
7.6 Long-term trend Period (Optional)	–	
7.7 Long-term trend Direction (Optional)	–	
7.8 Long-term trend Method used (Optional)	–	
7.9 Additional information (Optional)	–	

8. MAIN PRESSURES AND THREATS

8.1 Characterisation of pressures

Pressure	Timing	Scope (proportion of population affected)	Influence (on population or habitat of the species)	Invasive alien species of Union concern	Other invasive alien species
PB02 Forestry - Conversion from one type of forestry land use to another	ongoing and likely to be in the future	majority 50 – 90%	High influence		
PB03 Forestry - Introduction and spread of new species for forestry purposes	ongoing and likely to be in the future	minority <50%	High influence		

PB06 Forestry - Logging or thinning (excl. clear cutting)	ongoing and likely to be in the future	majority 50 – 90%	High influence		
PB07 Forestry - Removal of dead and dying trees (incl. debris)	ongoing and likely to be in the future	majority 50 – 90%	High influence		
PB08 Forestry - Removal of old trees (excl. dead or dying trees)	ongoing and likely to be in the future	majority 50 – 90%	High influence		
PB09 Forestry - Clear-cutting, removal of all trees	ongoing and likely to be in the future	majority 50 – 90%	High influence		
PB14 Forestry - Forest management reducing old growth forests	ongoing and likely to be in the future	majority 50 – 90%	High influence		
PB17 Forestry - Use of plant protection chemicals	ongoing and likely to be in the future	minority <50%	Medium influence		
PJ10 Climate change - Change of habitat location, size and/or quality	ongoing and likely to be in the future	whole >90%	High influence		
PJ11 Climate change - Desynchronisation of biological/ecological processes	ongoing and likely to be in the future	whole >90%	High influence		
PJ12 Climate change - Decline or extinction of related species	ongoing and likely to be in the future	whole >90%	High influence		
8.2 Methods used (Optional)	–				
8.3 Sources of information (Optional)	–				
8.4 Additional information (Optional)	–				

9. CONSERVATION MEASURES

9.1 Status of measures	<p>Are measures needed?</p> <p>Yes</p> <p>Status of measures:</p> <p>Measures identified, but none yet taken</p>
9.2 Scope of measures taken	–
9.3 Main purpose of the measures taken	–

	–
9.4 Location of the measures taken	–
9.5 Response to the measures <i>(when the measures start to neutralize the pressure(s) and produce positive effects)</i>	–
9.6 List of main conservation measures	<p>MB01 – Prevent conversion of (semi-) natural habitats into forests and of (semi-) natural forests into intensive forest plantation</p> <p>MB02 – Maintain existing traditional forest management and exploitation practices</p> <p>MB03 – Reinstate forest management and exploitation practices</p> <p>MB04 – Adapt/manage reforestation and forest regeneration</p> <p>MB05 – Adapt/change forest management and exploitation practices</p> <p>MB06 – Stop forest management and exploitation practices</p> <p>MB07 – Measures to combat illegal logging</p> <p>MB08 – Restoration of Annex I forest habitats (incl. re-establish and improvement)</p> <p>MB09 – Manage the use of natural and synthetic fertilisers, liming and pest control in forestry</p> <p>MS03 – Restoration of habitat of species from the directives</p>
9.7 Additional information (Optional)	–

10. FUTURE PROSPECTS

10.1 Future prospects of parameters	a) Range	Good
	b) Population	Good
	c) Habitat of the species	Bad
10.2 Additional information (Optional)	–	

11. CONCLUSIONS

Assessment of conservation status at end of reporting period

11.1 Range	Inadequate (U1)
11.2 Population	Unknown (XX)
11.3 Habitat for the species	Inadequate (U1)
11.4 Future prospects	Bad (U2)
11.5 Overall assessment of Conservation Status	Bad (U2)
11.6 Overall trend in Conservation Status	unknown

11.7 Change and reasons for change in conservation status and conservation status trend	Overall assessment of conservation status (11.5)	
	<i>Indicate whether there is a change from the previous reporting round and (if yes) the nature of that change.</i>	no, there is no difference
	<i>The change is mainly due to:</i>	
	Overall trend in conservation status (11.6)	
	<i>Indicate whether there is a change from the previous reporting round and (if yes) the nature of that change.</i>	no, there is no difference
	<i>The change is mainly due to:</i>	
11.8 Additional information (Optional)	–	

12. NATURA 2000 (PROPOSED SITES OF COMMUNITY IMPORTANCE (pSCIs), SITES OF COMMUNITY IMPORTANCE (SCIs) AND SPECIAL AREAS OF CONSERVATION (SACs) COVERAGE FOR ANNEX II SPECIES OF DIRECTIVE 92/43/EEC

12.1 Population size inside the pSCIs, SCIs and SACs network (on the biogeographical/marine level including all sites where the species is present)	a) Unit	–
	b) Minimum	–
	c) Maximum	–
	d) Best single value	–
12.2 Type of estimate	–	
12.3 Additional population size (using population unit other than reporting unit in field 6.2) (Optional)	a) Unit	–
	b) Minimum	–
	c) Maximum	–
	d) Best single value	–
12.4 Type of estimate (Optional)	–	
12.5 Population size inside the network Method used	–	

12.6 Short-term trend of population size within the network Direction	–
12.7 Short-term trend of population size within the network Method used	–
12.8 Short-term trend of habitat for the species within the network Direction	–
12.9 Short-term trend of habitat for the species within the network Method used	–
12.10 Additional information (Optional)	–

13. COMPLEMENTARY INFORMATION

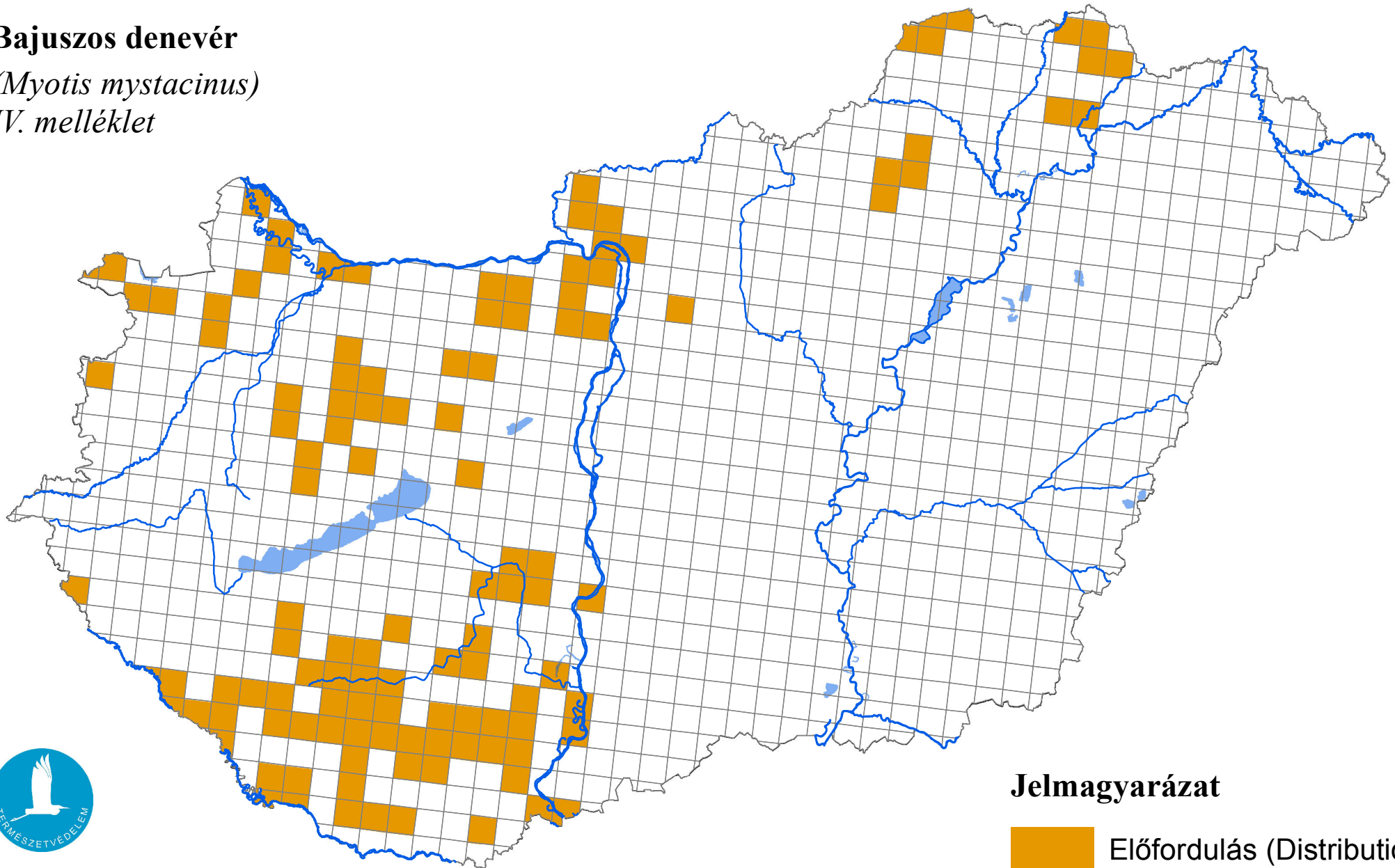
13.1 Justification of % thresholds for trends	–
13.2 Trans-boundary assessment	–
13.3 Other relevant information	–

Az élőhelyvédelmi irányelv 17. cikke szerinti országjelentés, 2025

Bajuszos denevér

(*Myotis mystacinus*)

IV. melléklet



Forrás: Agrárminisztérium,
Természetmegőrzési Főosztály

Jelmagyarázat

 Előfordulás (Distribution)

0 25 50 Kilometers
