

REPORT ON THE 'MAIN RESULTS OF THE SURVEILLANCE UNDER ARTICLE 17' FOR ANNEX II, IV AND V SPECIES OF DIRECTIVE 92/43/EEC

NATIONAL LEVEL

1. GENERAL INFORMATION

1.1 Member State	HU
1.2 Species code	1292
1.3 Species scientific name	<i>Natrix tessellata</i>
1.4 Alternative species scientific name (Optional)	
1.5 Common name (Optional)	kockás sikló

2. MAPS

Distribution of the species within the Member State concerned.

2.1 Sensitive species	No
2.2 Year or period	2019–2024
2.3 Distribution map	Yes
2.4 Distribution map Method used	Based mainly on extrapolation from a limited amount of data
2.5 Additional maps (Optional)	–
2.6 Additional information (Optional)	–

3. INFORMATION RELATED TO ANNEX V SPECIES (ART. 14 OF DIRECTIVE 92/43/EEC)

3.1 Is the species taken in the wild/exploited?	No	
3.2 Are measures needed for the species (only for species in favourable conservation status)?	No	
3.3 Which of the measures in Art. 14 have been taken?	a) regulations regarding access to property	–
	b) temporary or local prohibition of the taking of specimens in the wild and exploitation	–
	c) regulation of the periods and/or methods of taking specimens	–

	d) application of hunting and fishing rules which take account of the conservation of such populations	–					
	e) establishment of a system of licences for taking specimens or of quotas	–					
	f) regulation of the purchase, sale, offering for sale, keeping for sale or transport for sale of specimens	–					
	g) breeding in captivity of animal species as well as artificial propagation of plant species	–					
	h) other measures, if yes, describe	–					
3.4 Hunting bag or quantity taken in the wild regardless of conservation status - for Mammals and Acipenseridae (Fish)	a) Unit	–					
	b) Statistics/ quantity taken	<i>Provide statistics/quantity taken per hunting season or per year (where season is not used) over the reporting period</i>					
		Season/ year 1	Season/ year 2	Season/ year 3	Season/ year 4	Season/ year 5	Season/ year 6
	Min. (raw, i.e. not rounded)						
	Max. (raw, i.e. not rounded)						
	Unknown	–	–	–	–	–	–
3.5 Hunting bag or quantity taken in the wild Method used	–						
3.6 Additional information (Optional)	–						

BIOGEOGRAPHICAL LEVEL

Complete for each biogeographical region or marine region concerned.

4. BIOGEOGRAPHICAL AND MARINE REGIONS

4.1 Biogeographical or marine region where the species occurs	Pannonian
4.2 First time reporting	No
4.3 Additional information	–
4.4 Sources of information	Harmos, K. és Magos, G. (2021): Bombina. Kétéltűek és hüllők védelme a Mátrában. – Bükk Nemzeti Park Igazgatóság, Eger, 200 pp. Purger, J. (2019): A Barcsi Ó-Dráva holtág kételtű és hüllő faunája. In: Purger D., Purger J. szerk.: A Barcsi Ó-Dráva holtág élőhelyei és élővilága / Habitats and wildlife of the Old-Drava oxbow near Barcs BioRes, Pécs, 222 pp. A Nemzeti Biodiverzitás-Monitorozó Rendszer Keretében 2019-2024 Között Végzett Felmérések Kutatási Jelentései__ (Monitoring Reports (2019-2014) Of Hungarian Biodiversity Monitoring System) https://herpterkep.mme.hu/

5. RANGE

Range within the biogeographical/marine region concerned.

5.1 Surface area (km ²)	48771	
5.2 Change and reason for change in surface area of range and main reason	Is there a change between reporting periods? yes, due to improved knowledge/more accurate data	
	The change is mainly due to: improved knowledge or more accurate data	
5.3 Short-term trend Period	2013–2024	
5.4 Short-term trend Direction	uncertain	
5.5 Short-term trend Magnitude (Optional)	a) Estimated Minimum	–
	b) Estimated Maximum	–
	c) Pre-defined range	–
	d) Unknown	–
5.6. Short-term trend Magnitude Type of estimate (Optional)	–	
5.7 Short-term trend Method used	Based mainly on expert opinion with very limited data	
5.8 Long-term trend Period (Optional)	–	
5.9 Long-term trend Direction (Optional)	–	
5.10 Long-term trend Magnitude (Optional)	a) Minimum	–
	b) Maximum	–
5.11 Long-term trend Method used (Optional)	–	
5.12 Favourable reference range	a) –	
	b) <i>if a precise favourable reference range is unknown indicate if the range is:</i> approximately equal to the favourable reference range (less than 2% smaller)	
	c) –	
	d) <i>Indicate method used to set reference value (multiple methods can be chosen)</i>	<i>Indicate the quality of information available:</i>
	Reference-based approach	Moderate
Expert opinion		
5.13 Range when Directive came into force (Optional)	–	

5.14 Additional information (Optional)	–
--	---

6. POPULATION

Population within the biogeographical/marine region concerned.

6.1 Year or period	2019–2024	
6.2 Population size (in reporting unit)	a) Unit	–
	b) Minimum	–
	c) Maximum	–
	d) Best single value	–
	e) Class	
6.3 Type of estimate	Best estimate	
6.4 Quality of extrapolation to reporting unit (Optional)	–	
6.5 Additional population size (using population unit other than reporting unit) (Optional)	a) Unit	number of map 1x1 km grid cells
	b) Minimum	–
	c) Maximum	–
	d) Best single value	753
6.6 Type of estimate (Optional)	Best estimate	
6.7 Population size Method used	Based mainly on extrapolation from a limited amount of data	
6.8 Change and reason for change in population size and main reason	Is there a change between reporting periods? yes, due to improved knowledge/more accurate data	
	The change is mainly due to: improved knowledge or more accurate data	
6.9 Short-term trend Period	2013–2024	
6.10 Short-term trend Direction	uncertain	
6.11 Short-term trend Magnitude	a) Estimated Minimum	–
	b) Estimated Maximum	–
	c) Pre-defined range	–
	d) Unknown	Unknown
6.12 Short-term trend Magnitude Type of estimate	Best estimate	

6.13 Short-term trend Method used	Based mainly on expert opinion with very limited data	
6.14 Long-term trend Period (Optional)	–	
6.15 Long-term trend Direction (Optional)	–	
6.16 Long-term trend Magnitude (Optional)	a) Minimum	–
	b) Maximum	–
	c) Confidence interval	–
6.17 Long-term trend Method used (Optional)	–	
6.18 Favourable reference population	a) Population size (with unit):	
	b) if a precise favourable reference population is unknown indicate if the population is: between 5% and 25% smaller than the FRP	
	c) Indicate if favourable reference population is unknown: –	
	d) Indicate method used to set reference value (multiple methods can be chosen)	Indicate the quality of information available:
	Reference-based approach	Moderate
	Expert opinion	
6.19 Population size when Directive came into force (Optional)	–	
6.20 Additional Information (Optional)	Monitoring methods implemented in Hungary do not make it possible to provide population estimates in individuals for this species. Nor is it scientifically justifiably possible to convert monitoring results into national population estimates in individuals, due to the large variation in abundance, both spatially and temporally, of the various subpopulations.	

7. HABITAT FOR THE SPECIES

7.1 Sufficiency of area and quality of occupied habitat	a) Is area of occupied habitat sufficient (for long-term survival)? Yes
	b) Is quality of occupied habitat sufficient (for long-term survival)? Unknown
	c) If NO to a) is there a sufficiently large area of unoccupied habitat of suitable quality (for long-term survival)? –
	–

7.2 Sufficiency of area and quality of occupied habitat Method used	Area of habitat: Based mainly on expert opinion with very limited data	Quality of habitat: Insufficient or no data available
7.3 Short-term trend Period	2013–2024	
7.4 Short-term trend Direction	decreasing	
7.5 Short-term trend Method used	Based mainly on expert opinion with very limited data	
7.6 Long-term trend Period (Optional)	–	
7.7 Long-term trend Direction (Optional)	–	
7.8 Long-term trend Method used (Optional)	–	
7.9 Additional information (Optional)	–	

8. MAIN PRESSURES AND THREATS

8.1 Characterisation of pressures

Pressure	Timing	Scope (proportion of population affected)	Influence (on population or habitat of the species)	Invasive alien species of Union concern	Other invasive alien species
PI01 Problematic species - Invasive alien species of Union concern	ongoing and likely to be in the future	majority 50 – 90%	Medium influence	<i>Ameiurus melas</i> <i>Lepomis gibbosus</i> <i>Perccottus glenii</i> <i>Pseudorasbora parva</i>	
PI02 Problematic species - Other invasive alien species (other than species of Union concern)	ongoing and likely to be in the future	majority 50 – 90%	Low influence		<i>Carassius auratus</i> <i>Fallopia spp.</i> <i>Helianthus tuberosus</i>
PA04 Agriculture - Removal of small landscape features for agricultural land parcel consolidation	ongoing and likely to be in the future	minority <50%	Medium influence		
PE01 Transport - Roads, paths, railroads and related infrastructure	ongoing and likely to be in the future	majority 50 – 90%	Medium influence		
PF01 Infrastructure - Conversion from other land uses to built-up areas	ongoing and likely to be in the future	minority <50%	High influence		
PF03 Infrastructure - Creation of development of sports, tourism and leisure infrastructure	ongoing and likely to be in the future	majority 50 – 90%	Medium influence		

PF05 Infrastructure - Sports, tourism and leisure activities	ongoing and likely to be in the future	majority 50 – 90%	Medium influence		
PF13 Infrastructure - Drainage, land reclamation and conversion of wetlands, marshes, bogs, etc. for built- up areas	ongoing and likely to be in the future	minority <50%	Medium influence		
PG07 Species exploitation - Freshwater fish and shellfish harvesting (recreational)	ongoing and likely to be in the future	majority 50 – 90%	Low influence		
PG21 Species exploitation - Introduction and spread of new species in aquaculture	ongoing and likely to be in the future	majority 50 – 90%	Medium influence		
PI03 Problematic species - Problematic native species	ongoing and likely to be in the future	majority 50 – 90%	Low influence		
PI04 Problematic species - Plant and animal diseases, pathogens and pests	only in future	–	–		
PJ03 Climate change - Changes in precipitation regimes	ongoing and likely to be in the future	majority 50 – 90%	High influence		
PJ10 Climate change - Change of habitat location, size and/or quality	ongoing and likely to be in the future	majority 50 – 90%	Medium influence		
PJ12 Climate change - Decline or extinction of related species	ongoing and likely to be in the future	minority <50%	High influence		
PK01 Pollution - Mixed source pollution to surface and ground waters (limnic and terrestrial)	ongoing and likely to be in the future	majority 50 – 90%	High influence		
PL02 Water regimes - Drainage	ongoing and likely to be in the future	minority <50%	Medium influence		
PL05 Water regimes - Modification of hydrological flow	ongoing and likely to be in the future	majority 50 – 90%	Low influence		
PL06 Water regimes - Physical alteration of water bodies	ongoing and likely to be in the future	majority 50 – 90%	Medium influence		

8.2 Methods used (Optional)	–
8.3 Sources of information (Optional)	–
8.4 Additional information (Optional)	–

9. CONSERVATION MEASURES

9.1 Status of measures	<p>Are measures needed?</p> <p>Yes</p> <p>Status of measures:</p> <p>Part of measures identified have been taken</p>
9.2 Scope of measures taken	<50%
9.3 Main purpose of the measures taken	<p>A. Indicate the main purpose(s) of measures taken:</p> <p>Maintain the current range, population and/or habitat for the species Increase the population size and/or improve population dynamics (improve reproduction success, reduce mortality, improve age/sex structure) (related to 'Population')</p> <p>B. The main (primary) purpose:</p> <p>increase, improve population</p>
9.4 Location of the measures taken	Both inside and outside Natura 2000
9.5 Response to the measures <i>(when the measures start to neutralize the pressure(s) and produce positive effects)</i>	Medium-term response (within the next two reporting periods, 2025–2036)

9.6 List of main conservation measures	MA02 – Restore small landscape features on agricultural land ME01 – Reduce impact of transport operation and infrastructure MF01 – Managing the impacts of converting land for construction and development of infrastructure MF02 – Habitat restoration of areas impacted by residential, commercial, industrial and recreational infrastructure, operations and activities MF03 – Reduce impact of outdoor sports, leisure and recreational activities (incl. restoration of habitats) MG02 – Management of hunting, recreational fishing, and the recreational or commercial harvesting or collection of plants and fungi (incl. restoration of habitats) MG09 – Other measures to reduce impacts from aquaculture infrastructures and operation MI01 – Early detection and rapid eradication of invasive alien species of Union concern MI02 – Management, control or eradication of established invasive alien species of Union concern MI03 – Management, control or eradication of other invasive alien species MI05 – Management of problematic native species MI06 – Controlling and eradicating plant and animal diseases, pathogens and pests MJ02 – Implement climate change adaptation measures MK01 – Reduce impact of mixed source pollution MK02 – Reduce impact of multi-purpose hydrological changes MK03 – Restoration of habitats impacted by multi-purpose hydrological changes
9.7 Additional information (Optional)	–

10. FUTURE PROSPECTS

10.1 Future prospects of parameters	a) Range	Poor
	b) Population	Poor
	c) Habitat of the species	Poor
10.2 Additional information (Optional)	–	

11. CONCLUSIONS

Assessment of conservation status at end of reporting period

11.1 Range	Favourable (FV)
11.2 Population	Inadequate (U1)
11.3 Habitat for the species	Inadequate (U1)
11.4 Future prospects	Inadequate (U1)
11.5 Overall assessment of Conservation Status	Inadequate (U1)
11.6 Overall trend in Conservation Status	unknown

11.7 Change and reasons for change in conservation status and conservation status trend	Overall assessment of conservation status (11.5)	
	<i>Indicate whether there is a change from the previous reporting round and (if yes) the nature of that change.</i>	yes, due to genuine change yes, due to improved knowledge/more accurate data
	<i>The change is mainly due to:</i>	genuine change
	Overall trend in conservation status (11.6)	
	<i>Indicate whether there is a change from the previous reporting round and (if yes) the nature of that change.</i>	yes, due to genuine change yes, due to improved knowledge/more accurate data
	<i>The change is mainly due to:</i>	genuine change
11.8 Additional information (Optional)	–	

12. NATURA 2000 (PROPOSED SITES OF COMMUNITY IMPORTANCE (PSCIs), SITES OF COMMUNITY IMPORTANCE (SCIs) AND SPECIAL AREAS OF CONSERVATION (SACs) COVERAGE FOR ANNEX II SPECIES OF DIRECTIVE 92/43/EEC

12.1 Population size inside the pSCIs, SCIs and SACs network (on the biogeographical/marine level including all sites where the species is present)	a) Unit	–
	b) Minimum	–
	c) Maximum	–
	d) Best single value	–
12.2 Type of estimate	–	
12.3 Additional population size (using population unit other than reporting unit in field 6.2) (Optional)	a) Unit	–
	b) Minimum	–
	c) Maximum	–
	d) Best single value	–
12.4 Type of estimate (Optional)	–	
12.5 Population size inside the network Method used	–	

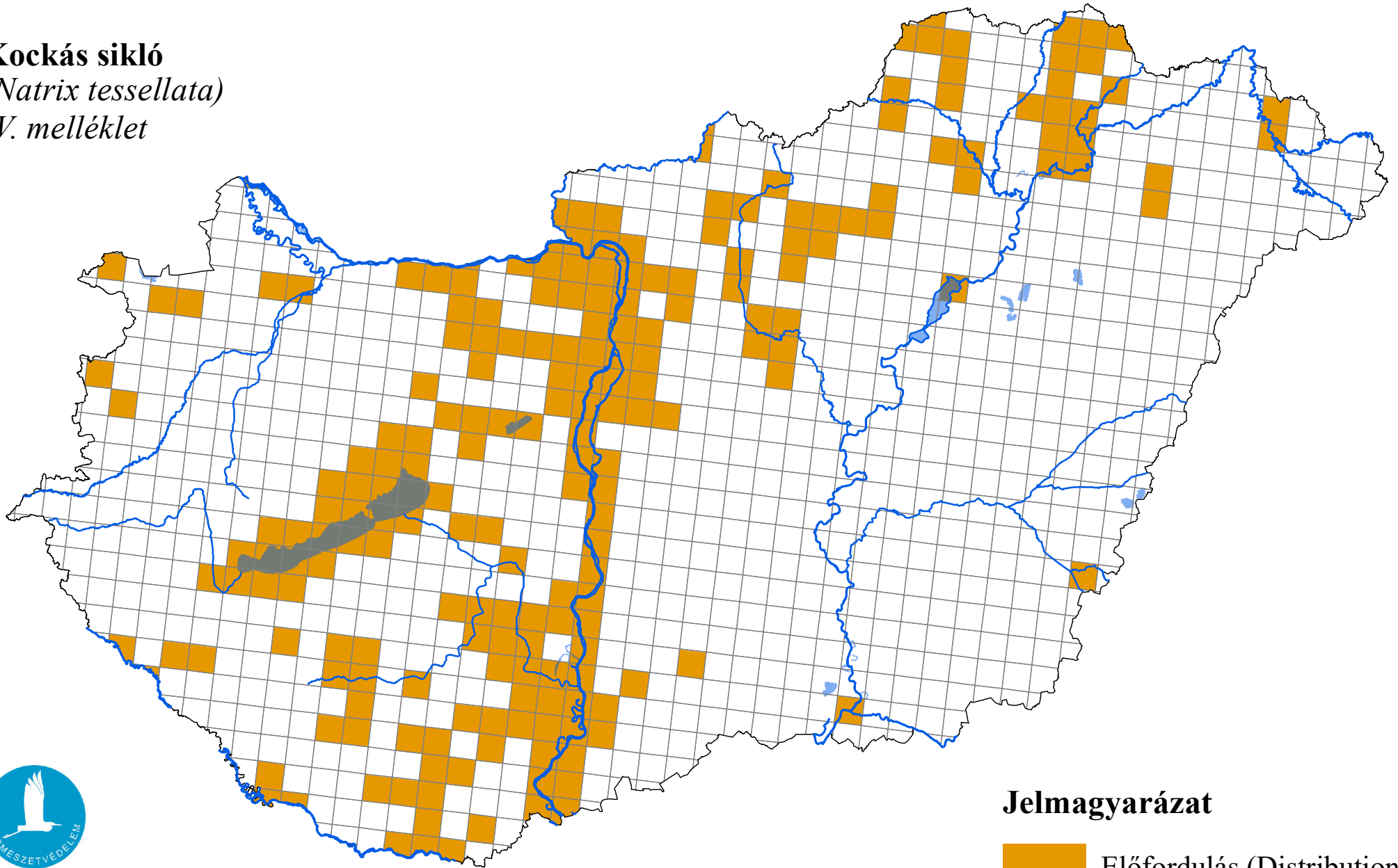
12.6 Short-term trend of population size within the network Direction	–
12.7 Short-term trend of population size within the network Method used	–
12.8 Short-term trend of habitat for the species within the network Direction	–
12.9 Short-term trend of habitat for the species within the network Method used	–
12.10 Additional information (Optional)	–

13. COMPLEMENTARY INFORMATION

13.1 Justification of % thresholds for trends	–
13.2 Trans-boundary assessment	–
13.3 Other relevant information	–

Az élőhelyvédelmi irányelv 17. cikke alapján készített országjelentés, 2025

Kockás sikló
(*Natrix tessellata*)
IV. melléklet



Forrás: Agrárminisztérium,
Természetmegőrzési Főosztály

Jelmagyarázat

