

REPORT ON THE 'MAIN RESULTS OF THE SURVEILLANCE UNDER ARTICLE 17' FOR ANNEX II, IV AND V SPECIES OF DIRECTIVE 92/43/EEC

NATIONAL LEVEL

1. GENERAL INFORMATION

1.1 Member State	HU
1.2 Species code	1037
1.3 Species scientific name	<i>Ophiogomphus cecilia</i>
1.4 Alternative species scientific name (Optional)	
1.5 Common name (Optional)	erdei szitakötő, zöld folyami-szitakötő

2. MAPS

Distribution of the species within the Member State concerned.

2.1 Sensitive species	No
2.2 Year or period	2019–2024
2.3 Distribution map	Yes
2.4 Distribution map Method used	Based mainly on extrapolation from a limited amount of data
2.5 Additional maps (Optional)	–
2.6 Additional information (Optional)	–

3. INFORMATION RELATED TO ANNEX V SPECIES (ART. 14 OF DIRECTIVE 92/43/EEC)

3.1 Is the species taken in the wild/exploited?	No	
3.2 Are measures needed for the species (only for species in favourable conservation status)?	No	
3.3 Which of the measures in Art. 14 have been taken?	a) regulations regarding access to property	–
	b) temporary or local prohibition of the taking of specimens in the wild and exploitation	–
	c) regulation of the periods and/or methods of taking specimens	–

	d) application of hunting and fishing rules which take account of the conservation of such populations	–					
	e) establishment of a system of licences for taking specimens or of quotas	–					
	f) regulation of the purchase, sale, offering for sale, keeping for sale or transport for sale of specimens	–					
	g) breeding in captivity of animal species as well as artificial propagation of plant species	–					
	h) other measures, if yes, describe	–					
3.4 Hunting bag or quantity taken in the wild regardless of conservation status - for Mammals and Acipenseridae (Fish)	a) Unit	–					
	b) Statistics/ quantity taken	<i>Provide statistics/quantity taken per hunting season or per year (where season is not used) over the reporting period</i>					
		Season/ year 1	Season/ year 2	Season/ year 3	Season/ year 4	Season/ year 5	Season/ year 6
	Min. (raw, i.e. not rounded)						
	Max. (raw, i.e. not rounded)						
	Unknown	–	–	–	–	–	–
3.5 Hunting bag or quantity taken in the wild Method used	–						
3.6 Additional information (Optional)	–						

BIOGEOGRAPHICAL LEVEL

Complete for each biogeographical region or marine region concerned.

4. BIOGEOGRAPHICAL AND MARINE REGIONS

4.1 Biogeographical or marine region where the species occurs	Pannonian
4.2 First time reporting	No
4.3 Additional information	–

4.4 Sources of information

Nemzeti Biodiverzitás-monitorozó Rendszer 2019-2024 közt végzett felméréseinek jelentései BioAqua Pro Kft. (2019): Közösségi jelentőségű fajok elterjedésének és állományviszonyainak élőhelytérképe és térinformatikai adatbázisa (T 1.1.2). WeCon – ATHU077. Kutatási zárójelentés. 165p. BioAqua Pro Kft. (2020): Nyugat-magyarországi közösségi jelentőségű élőhelyek, fajok és inváziós fajok elterjedésének és állományviszonyainak kutatása. BioAqua Pro Kft. (2020): Közösségi jelentőségű fajok elterjedésének és állományviszonyainak élőhelytérképe és térinformatikai adatbázisa. BioAqua Pro Kft. (2020): Az Ikva és a Soproni-hegység kisvízfolyásainak. – Kutatási jelentés, 68 pp. BioAqua Pro Kft. (2021): Közösségi jelentőségű makroszkópikus vízi gerinctelen fajok monitorozása. – Kutatási jelentés BioAqua Pro Kft. (2022): A vegetáció és a vízi makroszkópikus gerinctelen közösségek monitorozása az élőhelyfejlesztéssel érintett csatornahálózatban. – KEHOP 4.1.0-15-2016-00013. Kutatási jelentés, 70 pp. Csabai, Z. – Boda, P. – Borza, P. – Deák, Cs. – Málnás, K. – Móra, A. – Pernecker, B. (2019): Komplex vízi makroszkópikus gerinctelen faunafeltáró kutatás a Körös–Maros Nemzeti Park Igazgatóság működési területén található Nemzeti Park és Natura 2000 területeken. A Maros (HUKM20008). – Kutatási jelentés, Kézirat, a Körös–Maros Nemzeti Park Igazgatóság megbízása, Pécs, 42 pp. Csabai Zoltán (szerk.) (2019): Komplex vízi makroszkópikus gerinctelen faunafeltáró kutatás a Körös–Maros Nemzeti Park Igazgatóság Működési területén található Nemzeti Park és Natura 2000 területeken - A Fekete-, Fehér- és Kettős-Körös (HUKM20012) és a Sebes-Körös (HUKM20016) Innwater Zrt. (2020): Pinkán a Répcén és a Rábán létesített duzzasztók hatásának természetvédelmi szempontú vizsgálata. Müller, Z., Szabó, T., Gáspár, Á., Juhász, P., Ludányi, M., Málnás, K., ... & Kiss, B. (2019): Contribution to the Hungarian dragonfly fauna, based on the nationwide surveys (Odonata: Anisoptera). – Folia historico-naturalia Musei Matraensis 43: 33-80.

5. RANGE

Range within the biogeographical/marine region concerned.

5.1 Surface area (km ²)	13691	
5.2 Change and reason for change in surface area of range and main reason	<p>Is there a change between reporting periods?</p> <p>yes, due to improved knowledge/more accurate data</p> <p>yes, due to the use of different method</p> <p>The change is mainly due to:</p> <p>the use of a different method</p>	
5.3 Short-term trend Period	2013–2024	
5.4 Short-term trend Direction	stable	
5.5 Short-term trend Magnitude (Optional)	a) Estimated Minimum	–
	b) Estimated Maximum	–

	c) Pre-defined range	–
	d) Unknown	–
5.6. Short-term trend Magnitude Type of estimate (Optional)	–	
5.7 Short-term trend Method used	Based mainly on extrapolation from a limited amount of data	
5.8 Long-term trend Period (Optional)	–	
5.9 Long-term trend Direction (Optional)	–	
5.10 Long-term trend Magnitude (Optional)	a) Minimum	–
	b) Maximum	–
5.11 Long-term trend Method used (Optional)	–	
5.12 Favourable reference range	a) –	
	b) <i>if a precise favourable reference range is unknown indicate if the range is:</i> approximately equal to the favourable reference range (less than 2% smaller)	
	c) –	
	d) <i>Indicate method used to set reference value (multiple methods can be chosen)</i>	<i>Indicate the quality of information available:</i>
	Reference-based approach	Moderate
5.13 Range when Directive came into force (Optional)	–	
5.14 Additional information (Optional)	–	

6. POPULATION

Population within the biogeographical/marine region concerned.

6.1 Year or period	2019–2024	
6.2 Population size (in reporting unit)	a) Unit	number of map 1x1 km grid cells
	b) Minimum	–
	c) Maximum	–
	d) Best single value	358
	e) Class	
6.3 Type of estimate	minimum	
6.4 Quality of extrapolation to reporting unit (Optional)	–	
6.5 Additional population size	a) Unit	–

(using population unit other than reporting unit) (Optional)	b) Minimum	–
	c) Maximum	–
	d) Best single value	–
6.6 Type of estimate (Optional)	–	
6.7 Population size Method used	Based mainly on extrapolation from a limited amount of data	
6.8 Change and reason for change in population size and main reason	Is there a change between reporting periods? yes, due to genuine change yes, due to improved knowledge/more accurate data	
	The change is mainly due to: improved knowledge or more accurate data	
6.9 Short-term trend Period	2013–2024	
6.10 Short-term trend Direction	decreasing	
6.11 Short-term trend Magnitude	a) Estimated Minimum	–
	b) Estimated Maximum	–
	c) Pre-defined range	–
	d) Unknown	Unknown
6.12 Short-term trend Magnitude Type of estimate	Best estimate	
6.13 Short-term trend Method used	Based mainly on expert opinion with very limited data	
6.14 Long-term trend Period (Optional)	–	
6.15 Long-term trend Direction (Optional)	–	
6.16 Long-term trend Magnitude (Optional)	a) Minimum	–
	b) Maximum	–
	c) Confidence interval	–
6.17 Long-term trend Method used (Optional)	–	
6.18 Favourable reference population	<i>a) Population size (with unit):</i>	

	<p><i>b) if a precise favourable reference population is unknown indicate if the population is:</i> approximately equal to the favourable reference population (less than 5% smaller)</p>	
	<p><i>c) Indicate if favourable reference population is unknown:</i> –</p>	
	<p><i>d) Indicate method used to set reference value (multiple methods can be chosen)</i></p>	<p><i>Indicate the quality of information available:</i></p>
	<p>Expert opinion</p>	
6.19 Population size when Directive came into force (Optional)	<p>–</p>	
6.20 Additional Information (Optional)	<p></p>	

7. HABITAT FOR THE SPECIES

7.1 Sufficiency of area and quality of occupied habitat	<p>a) Is area of occupied habitat sufficient (for long-term survival)? Yes</p> <p>b) Is quality of occupied habitat sufficient (for long-term survival)? Yes</p> <p>c) If NO to a) is there a sufficiently large area of unoccupied habitat of suitable quality (for long-term survival)? –</p>	
7.2 Sufficiency of area and quality of occupied habitat Method used	<p>Area of habitat: Based mainly on extrapolation from a limited amount of data</p>	<p>Quality of habitat: Based mainly on expert opinion with very limited data</p>
7.3 Short-term trend Period	<p>2013–2024</p>	
7.4 Short-term trend Direction	<p>stable</p>	
7.5 Short-term trend Method used	<p>Based mainly on expert opinion with very limited data</p>	
7.6 Long-term trend Period (Optional)	<p>–</p>	
7.7 Long-term trend Direction (Optional)	<p>–</p>	
7.8 Long-term trend Method used (Optional)	<p>–</p>	
7.9 Additional information (Optional)	<p>–</p>	

8. MAIN PRESSURES AND THREATS

8.1 Characterisation of pressures

Pressure	Timing	Scope (proportion of population affected)	Influence (on population or habitat of the species)	Invasive alien species of Union concern	Other invasive alien species
PL05 Water regimes - Modification of hydrological flow	ongoing and likely to be in the future	whole >90%	High influence		
PL06 Water regimes - Physical alteration of water bodies	ongoing and likely to be in the future	whole >90%	High influence		
PK01 Pollution - Mixed source pollution to surface and ground waters (limnic and terrestrial)	ongoing and likely to be in the future	whole >90%	High influence		
PD02 Energy - Hydropower (dams, weirs, run-off the river and infrastructure)	ongoing and likely to be in the future	minority <50%	High influence		
PE02 Transport - Shipping lanes and ferry lanes transport operations	ongoing and likely to be in the future	minority <50%	High influence		
PJ03 Climate change - Changes in precipitation regimes	ongoing and likely to be in the future	whole >90%	Medium influence		
PF07 Infrastructure - Residential and commercial activities and structures generating pollution to surface or ground waters	ongoing and likely to be in the future	minority <50%	Medium influence		
PA17 Agriculture - Agricultural activities generating pollution to surface or ground waters	ongoing and likely to be in the future	minority <50%	Medium influence		
8.2 Methods used (Optional)	—				
8.3 Sources of information (Optional)	—				
8.4 Additional information (Optional)	—				

9. CONSERVATION MEASURES

9.1 Status of measures	<p>Are measures needed?</p> <p>Yes</p> <p>Status of measures:</p> <p>Measures identified, but none yet taken</p>	
9.2 Scope of measures taken	–	
9.3 Main purpose of the measures taken	–	
9.4 Location of the measures taken	–	
9.5 Response to the measures <i>(when the measures start to neutralize the pressure(s) and produce positive effects)</i>	–	
9.6 List of main conservation measures	<p>MC04 – Reduce impact of hydropower operation and infrastructure (incl. the restoration of freshwater habitats)</p> <p>MF07 – Reduce/eliminate pollution (incl. noise, light, heat, soil pollution) from industrial, commercial, residential and recreational areas and activities</p> <p>MA10 – Reduce/eliminate point or diffuse source pollution to surface or ground waters (including marine) from agricultural activities</p> <p>MJ01 – Implement climate change mitigation measures</p> <p>MK01 – Reduce impact of mixed source pollution</p> <p>MF08 – Manage changes in hydrological and coastal systems and regimes for construction and development (incl. restoration of habitats).</p> <p>MK02 – Reduce impact of multi-purpose hydrological changes</p> <p>ME01 – Reduce impact of transport operation and infrastructure</p>	
9.7 Additional information (Optional)	–	

10. FUTURE PROSPECTS

10.1 Future prospects of parameters	a) Range	Good
	b) Population	Unknown
	c) Habitat of the species	Unknown
10.2 Additional information (Optional)	–	

11. CONCLUSIONS

Assessment of conservation status at end of reporting period

11.1 Range	Favourable (FV)	
11.2 Population	Favourable (FV)	
11.3 Habitat for the species	Favourable (FV)	
11.4 Future prospects	Unknown (XX)	
11.5 Overall assessment of Conservation Status	Favourable (FV)	
11.6 Overall trend in Conservation Status	deteriorating	
11.7 Change and reasons for change in conservation status and conservation status trend	Overall assessment of conservation status (11.5)	
	<i>Indicate whether there is a change from the previous reporting round and (if yes) the nature of that change.</i>	no, there is no difference
	<i>The change is mainly due to:</i>	
	Overall trend in conservation status (11.6)	
	<i>Indicate whether there is a change from the previous reporting round and (if yes) the nature of that change.</i>	yes, due to genuine change
	<i>The change is mainly due to:</i>	genuine change
11.8 Additional information (Optional)	–	

12. NATURA 2000 (PROPOSED SITES OF COMMUNITY IMPORTANCE (PSCIs), SITES OF COMMUNITY IMPORTANCE (SCIs) AND SPECIAL AREAS OF CONSERVATION (SACs) COVERAGE FOR ANNEX II SPECIES OF DIRECTIVE 92/43/EEC

12.1 Population size inside the pSCIs, SCIs and SACs network (on the biogeographical/marine level including all sites where the species is present)	a) Unit	number of map 1x1 km grid cells
	b) Minimum	–
	c) Maximum	–
	d) Best single value	317
12.2 Type of estimate	minimum	
12.3 Additional population size (using population unit other than reporting unit in field 6.2) (Optional)	a) Unit	–
	b) Minimum	–
	c) Maximum	–

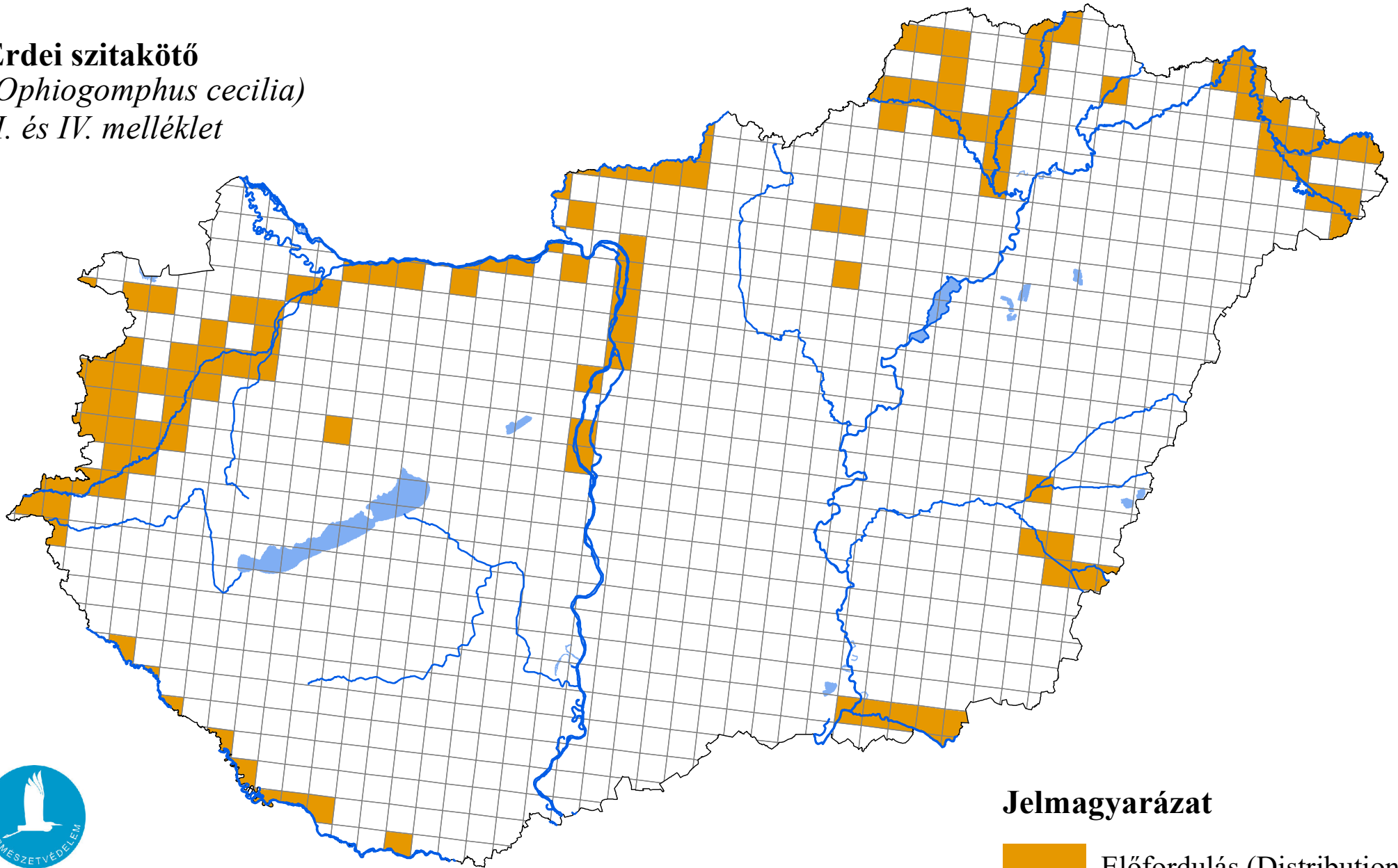
	d) Best single value	–
12.4 Type of estimate (Optional)		–
12.5 Population size inside the network Method used		Based mainly on extrapolation from a limited amount of data
12.6 Short-term trend of population size within the network Direction		stable
12.7 Short-term trend of population size within the network Method used		Based mainly on expert opinion with very limited data
12.8 Short-term trend of habitat for the species within the network Direction		stable
12.9 Short-term trend of habitat for the species within the network Method used		Based mainly on expert opinion with very limited data
12.10 Additional information (Optional)		–

13. COMPLEMENTARY INFORMATION

13.1 Justification of % thresholds for trends		–
13.2 Trans-boundary assessment		–
13.3 Other relevant information		–

Az élőhelyvédelmi irányelv 17. cikke alapján készített országjelentés, 2025

Erdei szitakötő
(*Ophiogomphus cecilia*)
II. és IV. melléklet



Forrás: Agrárminisztérium,
Természetmegőrzési Főosztály

Jelmagyarázat

