

PART B - BIRD SPECIES' STATUS AND TRENDS REPORT FORMAT

1. SPECIES INFORMATION

1.1 Member State	HU
1.2 Species code	AB05
1.3 EURING code	7390
1.4 Species scientific name	<i>Otus scops s. str.</i>
1.5 Subspecific population	sensu stricto [excluding cyprius]
1.6 Alternative species scientific name (Optional)	
1.7 Common name (Optional)	

2. SEASON

2.1 Season	Breeding
2.2 First time reporting	No
2.3 Additional information	

3. POPULATION SIZE

3.1 Year or period	2019-2024	
3.2 Population size	a) Unit	number of pairs
	b) Minimum	1600
	c) Maximum	4300
	d) Best single value	–
3.3 Type of estimate	Best estimate	
3.4 Population size Method used	Based mainly on extrapolation from a limited amount of data	
3.5 Sources	Szép et. al (2022): Bird Atlas of Hungary (https://mme.hu/madaratlasz)	
3.6 Change and reason for change (since previous report)	Is there a change between reporting periods? yes, due to improved knowledge/more accurate data	
	The change is mainly due to: improved knowledge or more accurate data	
3.7 Additional information (Optional)		

4. POPULATION TREND

4.1 Short-term trend (last 12 years)

4.1.1 Short-term trend Period	2013-2024	
4.1.2 Short-term trend Direction	stable	
4.1.3 Short-term trend Magnitude	a) Minimum	–
	b) Maximum	–
	c) Best single value	–
4.1.4 Short-term trend Method used	Based mainly on expert opinion with very limited data	
4.1.5 Sources	Expert opinions	
4.2 Long-term trend (since ca. 1980)		
4.2.1 Long-term trend Period	1990-2024	
4.2.2 Long-term trend Direction	increasing	
4.2.3 Long-term trend Magnitude	a) Minimum	500
	b) Maximum	975
	c) Best single value	–
4.2.4 Long-term trend Method used	Based mainly on expert opinion with very limited data	
4.2.5 Sources	Haraszthy L. (szerk.) (1984): Magyarország fészkelő madarai. Natura, Budapest. (2nd edition: 1998); Szép et. al (2022): Bird Atlas of Hungary (https://mme.hu/madaratlasz)	
4.3 Additional information (Optional)	Based mainly on expert opinion with limited data. Haraszthy (1998) estimated 300-400 pairs. Bird Atlas of Hungary (Szép et al. 2021) estimated 1600-4300 pairs. Night surveys in 2024 suggests higher min value.	

5. BREEDING DISTRIBUTION MAP AND SIZE

5.1 Sensitive species	No
5.2 Year or period	2019-2024
5.3 Breeding distribution map	Yes
5.4 Breeding distribution size	31012
5.5 Breeding distribution Method used	Based mainly on extrapolation from a limited amount of data
5.6 Additional maps Optional	No
5.7 Sources	MME's Bird Atlas Database (https://map.mme.hu) - all breeding probabilities
5.8 Additional information Optional	

6. BREEDING DISTRIBUTION TREND

6.1 Short-term trend (last 12 years)

6.1.1 Short-term trend Period	2013-2024	
6.1.2 Short-term trend Direction	increasing	
6.1.3 Short-term trend Magnitude	a) Minimum	–
	b) Maximum	–
	c) Best single value	78
6.1.4 Short-term trend Method used	Based mainly on extrapolation from a limited amount of data	
6.1.5 Sources	MME/BirdLife Hungary's Bird Atlas database, Szép et. al (2022): Bird Atlas of Hungary (https://mme.hu/madaratlasz)	

6.2 Long-term trend (since ca. 1980)

6.2.1 Long-term trend Period	1980-2024	
6.2.2 Long-term trend Direction	increasing	
6.2.3 Long-term trend Magnitude	a) Minimum	–
	b) Maximum	–
	c) Best single value	78
6.2.4 Long-term trend Method used	Based mainly on extrapolation from a limited amount of data	
6.2.5 Sources	Haraszthy L. (szerk.) (1984): Magyarország fészkelő madarai. Natura, Budapest.; Szép et. al (2022): Bird Atlas of Hungary (https://mme.hu/madaratlasz)	
6.3 Additional information Optional	Spatial trend was calculated using the BirdLife Hungary's Bird Atlas Database (map.mme.hu), based on the differences of species lists of UTM squares "mapped" in both 6-year periods.	

7. MAIN PRESSURES AND THREATS

7.1 Characterisation of pressures

Pressure	Timing	Scope (proportion of population affected)	Influence (on population or habitat of the species)	Location (where the pressure is primarily operating)	Invasive alien species of Union concern	Other invasive alien species
PA03	ongoing and likely to be in the future	minority <50%	High influence	inside the Member State		
PA05	ongoing and likely to be in the future	minority <50%	High influence	inside the Member State		
PB08	ongoing and likely to be in the future	minority <50%	High influence	inside the Member State		
PD06	ongoing and likely to be in the future	minority <50%	Medium influence	inside the Member State		

PE01	ongoing and likely to be in the future	minority <50%	Medium influence	inside the Member State		
PF01	ongoing and likely to be in the future	minority <50%	High influence	inside the Member State		
PG11	ongoing and likely to be in the future	whole >90%	Medium influence	outside EU		
PI03	ongoing and likely to be in the future	minority <50%	Medium influence	inside the Member State		
7.2 Methods used (Optional)		Based mainly on extrapolation from a limited amount of data				
7.3 Sources of information (Optional)		Szép et. al (2022): Bird Atlas of Hungary (https://mme.hu/madaratlasz)				
7.4 Additional information (Optional)						

8. CONSERVATION MEASURES

8.1 Status of measures	<p>Are measures needed?</p> <p>Yes</p> <p>Status of measures:</p> <p>Most/all of measures identified have been taken</p>
8.2 Scope of measures taken	majority 50 - 90%
8.3 Main purpose of the measures taken	<p>A. Indicate the main purpose(s) of measures taken: Expand distribution of the species</p> <p>B. The main (primary) purpose: Expand distribution of the species</p>
8.4 Location of the measures	Both inside and outside Natura 2000
8.5 Response to the measures (when the measures start to neutralize the pressure(s) and produce positive effects)	Short-term response (within the current reporting period)
8.6 List of main conservation measures	MA04 MB05 MC06 MS03
8.7 Additional information Optional	

9. NATURA 2000 (SPECIAL PROTECTION AREAS (SPAs)) COVERAGE

9.1 Population size inside the Natura 2000 (Special Protection Area (SPA)) network (on national level including all sites where the species is present)	a) Unit	number of pairs
	b) Minimum	400
	c) Maximum	500
	d) Best single value	–

9.2 Type of estimate	Best estimate
9.3 Population size inside the network Method used	Based mainly on extrapolation from a limited amount of data
9.4 Short-term trend of population size within the network Direction	stable
9.5 Short-term trend of population size within the network Method used	Based mainly on expert opinion with very limited data
9.6 Additional information (Optional)	Estimated data, in the absence of accurate datasets. The coverage of SPAs is 12%.

10. PROGRESS IN WORK RELATED TO INTERNATIONAL SPECIES ACTION PLANS (SAPs), MANAGEMENT PLANS (MPS) AND BRIEF MANAGEMENT STATEMENTS (BMSS)

10.1 Type of international plan	–
10.2 Has a national plan linked to the international Species Action Plan (SAP) / Management Plan (MP) / Brief Management Statement (BMS) been adopted?	–
10.3 Assessment of the effectiveness of Species Action Plans (SAPs) for globally threatened species	–
10.4 Assessment of the effectiveness of Management Plans (MPs) for huntable species in non-Secure status	–
10.5 Sources of further information	–

11. INFORMATION RELATED TO ANNEX II SPECIES OF DIRECTIVE 2009/147/EC

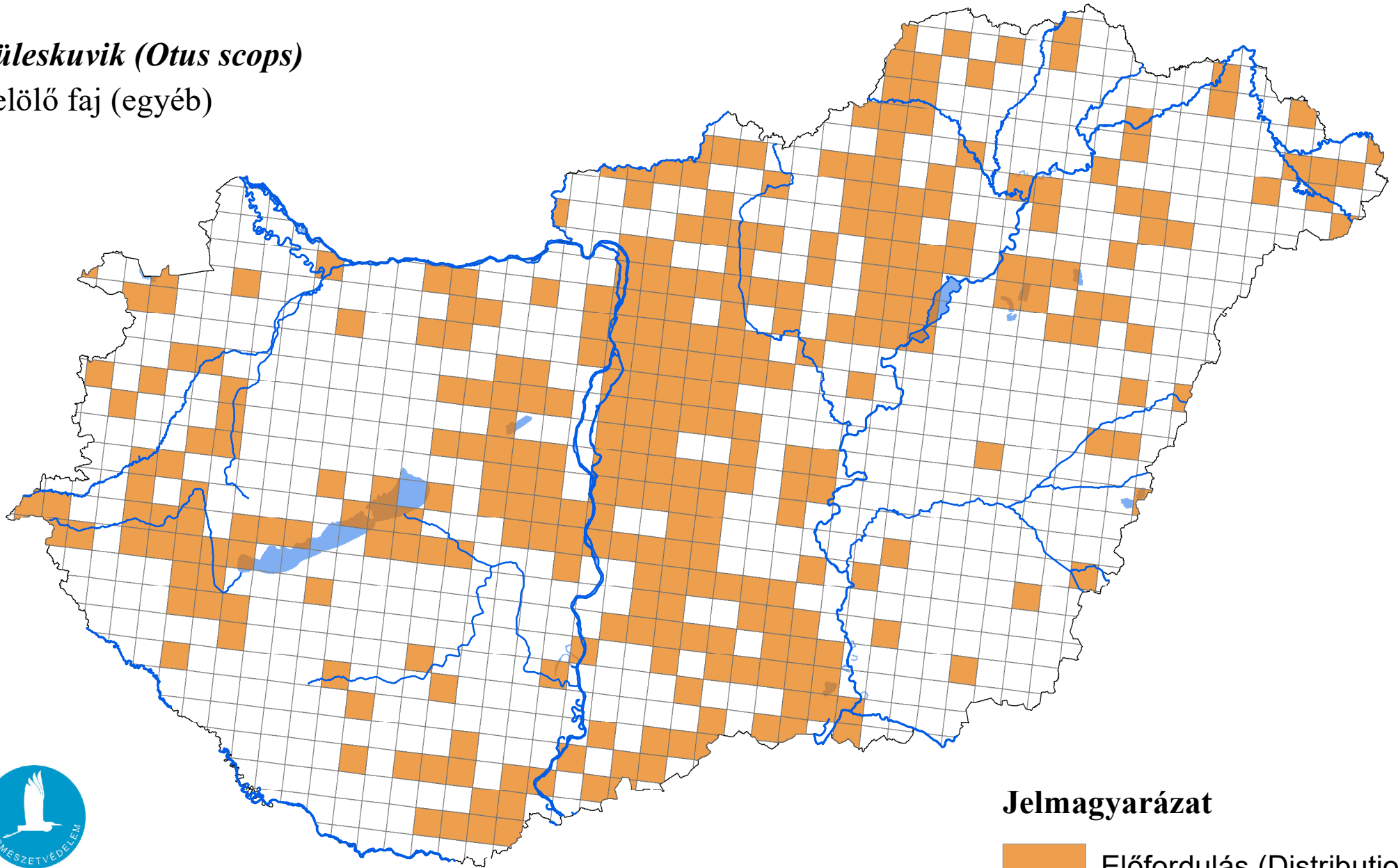
11.1 Is the species nationally hunted?	–						
11.2 Hunting bag	a) Unit	–					
	b) Season (optional)	–					
	c) Statistics / numbers (in individuals)	<i>Provide statistics per hunting season or per year (where season is not used) over the reporting period.</i>					
		<table border="1"> <tr> <td>Season/ year 1</td> <td>Season/ year 2</td> <td>Season/ year 3</td> <td>Season/ year 4</td> <td>Season/ year 5</td> <td>Season/ year 6</td> </tr> </table>	Season/ year 1	Season/ year 2	Season/ year 3	Season/ year 4	Season/ year 5
Season/ year 1	Season/ year 2	Season/ year 3	Season/ year 4	Season/ year 5	Season/ year 6		

	Min. (raw, i.e. not rounded)	–	–	–	–	–	–
	Max. (raw, i.e. not rounded)						
	Unknown	–	–	–	–	–	–
11.3 Hunting bag Method used	–						
11.4 Additional information Optional							

A madárvédelmi irányelv 12. cikke alapján készített országjelentés, 2025

füleskuvik (Otus scops)

jelölő faj (egyéb)



Forrás: Agrárminisztérium,
Természetmegőrzési Főosztály

Jelmagyarázat

 Előfordulás (Distribution)

0 25 50 Kilometers
