

PART B - BIRD SPECIES' STATUS AND TRENDS REPORT FORMAT

1. SPECIES INFORMATION

1.1 Member State	HU
1.2 Species code	A034
1.3 EURING code	1440
1.4 Species scientific name	<i>Platalea leucorodia</i>
1.5 Subspecific population	
1.6 Alternative species scientific name (Optional)	
1.7 Common name (Optional)	

2. SEASON

2.1 Season	Breeding
2.2 First time reporting	No
2.3 Additional information	

3. POPULATION SIZE

3.1 Year or period	2019-2024	
3.2 Population size	a) Unit	number of pairs
	b) Minimum	611
	c) Maximum	908
	d) Best single value	–
3.3 Type of estimate	Best estimate	
3.4 Population size Method used	Complete survey or a statistically robust estimate	
3.5 Sources	National park directorates' databases (Annual survey of colonially breeding and strictly protected bird species)	
3.6 Change and reason for change (since previous report)	Is there a change between reporting periods? yes, due to genuine change	
	The change is mainly due to: genuine change	
3.7 Additional information (Optional)		

4. POPULATION TREND

4.1 Short-term trend (last 12 years)

4.1.1 Short-term trend Period	2013-2024	
4.1.2 Short-term trend Direction	fluctuating	
4.1.3 Short-term trend Magnitude	a) Minimum	–
	b) Maximum	–
	c) Best single value	–
4.1.4 Short-term trend Method used	Complete survey or a statistically robust estimate	
4.1.5 Sources	Databases of National Park Directorates (Annual survey of colonially breeding and strictly protected bird species), and BirdLife Hungary's Bird Atlas Database (http://map.mme.hu/)	
4.2 Long-term trend (since ca. 1980)		
4.2.1 Long-term trend Period	1980-2024	
4.2.2 Long-term trend Direction	increasing	
4.2.3 Long-term trend Magnitude	a) Minimum	6
	b) Maximum	51
	c) Best single value	–
4.2.4 Long-term trend Method used	Complete survey or a statistically robust estimate	
4.2.5 Sources	Haraszthy L. (szerk.) (1984): Magyarország fészkelő madarai. Natura, Budapest. (2nd edition: 1998); Szép et. al (2022): Bird Atlas of Hungary (https://mme.hu/madaratlasz)	
4.3 Additional information (Optional)	Long term trend is increasing, because the breeding population of Spoonbills increased from 575-600 pairs to around pairs in most years. Adult Spoonbills tend to skip breeding during dry years, due to unfavourable conditions.	

5. BREEDING DISTRIBUTION MAP AND SIZE

5.1 Sensitive species	No
5.2 Year or period	2019-2024
5.3 Breeding distribution map	Yes
5.4 Breeding distribution size	5378
5.5 Breeding distribution Method used	Complete survey or a statistically robust estimate
5.6 Additional maps Optional	No
5.7 Sources	MME's bird atlas database (https://map.mme.hu) - only confirmed breedings
5.8 Additional information Optional	

6. BREEDING DISTRIBUTION TREND

6.1 Short-term trend (last 12 years)

6.1.1 Short-term trend Period	2013-2024	
6.1.2 Short-term trend Direction	stable	
6.1.3 Short-term trend Magnitude	a) Minimum	–
	b) Maximum	–
	c) Best single value	–
6.1.4 Short-term trend Method used	Complete survey or a statistically robust estimate	
6.1.5 Sources	MME/BirdLife Hungary's Bird Atlas database, Szép et. al (2022): Bird Atlas of Hungary (https://mme.hu/madaratlasz)	

6.2 Long-term trend (since ca. 1980)

6.2.1 Long-term trend Period	1980-2024	
6.2.2 Long-term trend Direction	increasing	
6.2.3 Long-term trend Magnitude	a) Minimum	–
	b) Maximum	–
	c) Best single value	470
6.2.4 Long-term trend Method used	Based mainly on expert opinion with very limited data	
6.2.5 Sources	Haraszthy L. (szerk.) (1984): Magyarország fészkelő madarai. Natura, Budapest.; Szép et. al (2022): Bird Atlas of Hungary (https://mme.hu/madaratlasz)	
6.3 Additional information Optional		

7. MAIN PRESSURES AND THREATS

7.1 Characterisation of pressures

Pressure	Timing	Scope (proportion of population affected)	Influence (on population or habitat of the species)	Location (where the pressure is primarily operating)	Invasive alien species of Union concern	Other invasive alien species
PA21	ongoing and likely to be in the future	minority <50%	High influence	inside the Member State		
PD06	ongoing and likely to be in the future	minority <50%	Medium influence	inside the Member State		
PG11	ongoing and likely to be in the future	whole >90%	High influence	both inside and outside EU		
PI03	ongoing and likely to be in the future	majority 50 – 90%	High influence	inside the Member State		

PJ03	ongoing and likely to be in the future	majority 50 – 90%	Medium influence	inside the Member State		
PL06	ongoing and likely to be in the future	majority 50 – 90%	High influence	outside EU		
PM01	ongoing and likely to be in the future	majority 50 – 90%	High influence	inside the Member State		
PM03	ongoing and likely to be in the future	minority <50%	Medium influence	inside the Member State		
7.2 Methods used (Optional)		Complete survey or a statistically robust estimate				
7.3 Sources of information (Optional)		Szép et. al (2022): Bird Atlas of Hungary (https://mme.hu/madaratlasz)				
7.4 Additional information (Optional)						

8. CONSERVATION MEASURES

8.1 Status of measures	<p>Are measures needed?</p> <p>Yes</p> <p>Status of measures:</p> <p>Most/all of measures identified have been taken</p>
8.2 Scope of measures taken	majority 50 - 90%
8.3 Main purpose of the measures taken	<p>A. Indicate the main purpose(s) of measures taken: Restore habitat of the species</p> <p>B. The main (primary) purpose: Restore habitat of the species</p>
8.4 Location of the measures	Both inside and outside Natura 2000
8.5 Response to the measures (when the measures start to neutralize the pressure(s) and produce positive effects)	Medium-term response (within the next two reporting periods)
8.6 List of main conservation measures	MA03 MA13 MF08 MG02 MG03 MG04 MG10
8.7 Additional information Optional	Szép T. et al. (szerk.) 2022. Magyarország madáratlasza. 2., javított és kiegészített kiadás. – Agrárminisztérium, MME, Budapest. madaratlasz.mme.hu

9. NATURA 2000 (SPECIAL PROTECTION AREAS (SPAs)) COVERAGE

9.1 Population size inside the Natura 2000 (Special Protection Area (SPA))	a) Unit	number of pairs
	b) Minimum	611

network (on national level including all sites where the species is present)	c) Maximum	851
	d) Best single value	–
9.2 Type of estimate	95% confidence interval	
9.3 Population size inside the network Method used	Complete survey or a statistically robust estimate	
9.4 Short-term trend of population size within the network Direction	fluctuating	
9.5 Short-term trend of population size within the network Method used	Complete survey or a statistically robust estimate	
9.6 Additional information (Optional)	The population size was calculated using the coverage rate (proportion of SPA areas in UTM squares where the species breeds, based on the BirdLife Hungary MAP database), based on the national population. The coverage of SPAs is 96%.	

10. PROGRESS IN WORK RELATED TO INTERNATIONAL SPECIES ACTION PLANS (SAPs), MANAGEMENT PLANS (MPs) AND BRIEF MANAGEMENT STATEMENTS (BMSs)

10.1 Type of international plan	Species action plan	
10.2 Has a national plan linked to the international Species Action Plan (SAP) / Management Plan (MP) / Brief Management Statement (BMS) been adopted?	No	
10.3 Assessment of the effectiveness of Species Action Plans (SAPs) for globally threatened species	unchanged	
10.4 Assessment of the effectiveness of Management Plans (MPs) for huntable species in non-Secure status	–	
10.5 Sources of further information	–	

11. INFORMATION RELATED TO ANNEX II SPECIES OF DIRECTIVE 2009/147/EC

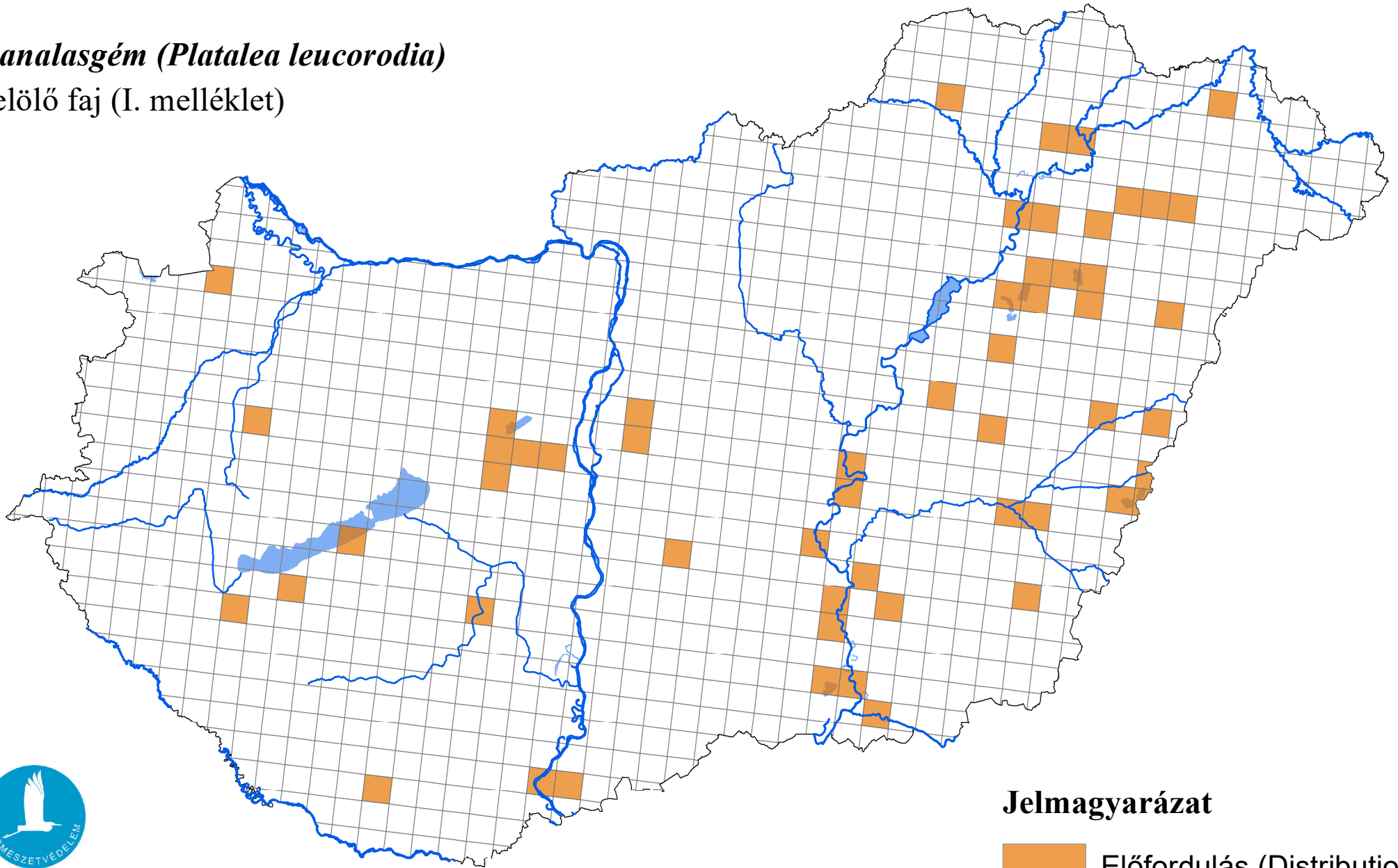
11.1 Is the species nationally hunted?	–	
11.2 Hunting bag	a) Unit	–
	b) Season (optional)	–
	c) Statistics /	<i>Provide statistics per hunting season or per year (where season is not used) over the reporting period.</i>

	numbers (in individuals)	Season/ year 1	Season/ year 2	Season/ year 3	Season/ year 4	Season/ year 5	Season/ year 6
	Min. (raw, i.e. not rounded)	–	–	–	–	–	–
	Max. (raw, i.e. not rounded)						
	Unknown	–	–	–	–	–	–
11.3 Hunting bag Method used	–						
11.4 Additional information Optional							

A madárvédelmi irányelv 12. cikke alapján készített országjelentés, 2025

kanalasgém (Platalea leucorodia)

jelölő faj (I. melléklet)



Forrás: Agrárminisztérium,
Természetmegőrzési Főosztály

Jelmagyarázat

 Előfordulás (Distribution)

0 25 50 Kilometers
