

# REPORT ON THE 'MAIN RESULTS OF THE SURVEILLANCE UNDER ARTICLE 17' FOR ANNEX II, IV AND V SPECIES OF DIRECTIVE 92/43/EEC

## NATIONAL LEVEL

### 1. GENERAL INFORMATION

1.1 Member State	HU
1.2 Species code	1256
1.3 Species scientific name	<i>Podarcis muralis</i>
1.4 Alternative species scientific name (Optional)	
1.5 Common name (Optional)	fali gyík

### 2. MAPS

*Distribution of the species within the Member State concerned.*

2.1 Sensitive species	No
2.2 Year or period	2019–2024
2.3 Distribution map	Yes
2.4 Distribution map Method used	Based mainly on extrapolation from a limited amount of data
2.5 Additional maps (Optional)	–
2.6 Additional information (Optional)	–

### 3. INFORMATION RELATED TO ANNEX V SPECIES (ART. 14 OF DIRECTIVE 92/43/EEC)

3.1 Is the species taken in the wild/exploited?	No	
3.2 Are measures needed for the species (only for species in favourable conservation status)?	No	
3.3 Which of the measures in Art. 14 have been taken?	a) regulations regarding access to property	–
	b) temporary or local prohibition of the taking of specimens in the wild and exploitation	–
	c) regulation of the periods and/or methods of taking specimens	–

	d) application of hunting and fishing rules which take account of the conservation of such populations	–					
	e) establishment of a system of licences for taking specimens or of quotas	–					
	f) regulation of the purchase, sale, offering for sale, keeping for sale or transport for sale of specimens	–					
	g) breeding in captivity of animal species as well as artificial propagation of plant species	–					
	h) other measures, if yes, describe	–					
3.4 Hunting bag or quantity taken in the wild regardless of conservation status - for Mammals and Acipenseridae (Fish)	a) Unit	–					
	b) Statistics/ quantity taken	<i>Provide statistics/quantity taken per hunting season or per year (where season is not used) over the reporting period</i>					
		Season/ year 1	Season/ year 2	Season/ year 3	Season/ year 4	Season/ year 5	Season/ year 6
	Min. (raw, i.e. not rounded)						
	Max. (raw, i.e. not rounded)						
	Unknown	–	–	–	–	–	–
3.5 Hunting bag or quantity taken in the wild Method used	–						
3.6 Additional information (Optional)	–						

## BIOGEOGRAPHICAL LEVEL

*Complete for each biogeographical region or marine region concerned.*

### 4. BIOGEOGRAPHICAL AND MARINE REGIONS

4.1 Biogeographical or marine region where the species occurs	Pannonian
4.2 First time reporting	No
4.3 Additional information	–
4.4 Sources of information	Harmos, K. és Magos, G. (2021): Bombina. Kétéltűek és hüllők védelme a Mátrában. – Bükk Nemzeti Park Igazgatóság, Eger, 200 pp. A Nemzeti Biodiverzitás-Monitorozó Rendszer Keretében 2019-2024 Között Végzett Felmérések Kutatási Jelentései __ (Monitoring Reports (2019-2014) Of Hungarian Biodiversity Monitoring System) <a href="https://herpterkep.mme.hu/">https://herpterkep.mme.hu/</a>

### 5. RANGE

*Range within the biogeographical/marine region concerned.*

5.1 Surface area (km <sup>2</sup> )	59587
-------------------------------------	-------

5.2 Change and reason for change in surface area of range and main reason	Is there a change between reporting periods? yes, due to genuine change yes, due to improved knowledge/more accurate data	
	The change is mainly due to: improved knowledge or more accurate data	
5.3 Short-term trend Period	2013–2024	
5.4 Short-term trend Direction	increasing	
5.5 Short-term trend Magnitude (Optional)	a) Estimated Minimum	–
	b) Estimated Maximum	–
	c) Pre-defined range	–
	d) Unknown	–
5.6. Short-term trend Magnitude Type of estimate (Optional)	–	
5.7 Short-term trend Method used	Based mainly on expert opinion with very limited data	
5.8 Long-term trend Period (Optional)	–	
5.9 Long-term trend Direction (Optional)	–	
5.10 Long-term trend Magnitude (Optional)	a) Minimum	–
	b) Maximum	–
5.11 Long-term trend Method used (Optional)	–	
5.12 Favourable reference range	a) –	
	b) <i>if a precise favourable reference range is unknown indicate if the range is:</i> approximately equal to the favourable reference range (less than 2% smaller)	
	c) –	
	d) <i>Indicate method used to set reference value (multiple methods can be chosen)</i>	<i>Indicate the quality of information available:</i>
	Reference-based approach	Moderate
	Expert opinion	
5.13 Range when Directive came into force (Optional)	–	
5.14 Additional information (Optional)	–	

## 6. POPULATION

*Population within the biogeographical/marine region concerned.*

6.1 Year or period	2019–2024	
6.2 Population size (in reporting unit)	a) Unit	–
	b) Minimum	–
	c) Maximum	–
	d) Best single value	–
	e) Class	
6.3 Type of estimate	Best estimate	
6.4 Quality of extrapolation to reporting unit (Optional)	–	
6.5 Additional population size (using population unit other than reporting unit) (Optional)	a) Unit	number of map 1x1 km grid cells
	b) Minimum	–
	c) Maximum	–
	d) Best single value	1568
6.6 Type of estimate (Optional)	Best estimate	
6.7 Population size Method used	Based mainly on extrapolation from a limited amount of data	
6.8 Change and reason for change in population size and main reason	Is there a change between reporting periods?	
	yes, due to genuine change	
	yes, due to improved knowledge/more accurate data	
	The change is mainly due to: improved knowledge or more accurate data	
6.9 Short-term trend Period	2013–2024	
6.10 Short-term trend Direction	stable	
6.11 Short-term trend Magnitude	a) Estimated Minimum	–
	b) Estimated Maximum	–
	c) Pre-defined range	–
	d) Unknown	–
6.12 Short-term trend Magnitude Type of estimate	Best estimate	
6.13 Short-term trend Method used	Based mainly on expert opinion with very limited data	

6.14 Long-term trend Period (Optional)	–	
6.15 Long-term trend Direction (Optional)	–	
6.16 Long-term trend Magnitude (Optional)	a) Minimum	–
	b) Maximum	–
	c) Confidence interval	–
6.17 Long-term trend Method used (Optional)	–	
6.18 Favourable reference population	<i>a) Population size (with unit):</i>	
	<i>b) if a precise favourable reference population is unknown indicate if the population is: approximately equal to the favourable reference population (less than 5% smaller)</i>	
	<i>c) Indicate if favourable reference population is unknown:</i> –	
	<i>d) Indicate method used to set reference value (multiple methods can be chosen)</i>	<i>Indicate the quality of information available:</i>
	Reference-based approach	Moderate
	Expert opinion	
6.19 Population size when Directive came into force (Optional)	–	
6.20 Additional Information (Optional)	Monitoring methods implemented in Hungary do not make it possible to provide population estimates in individuals for this species. Nor is it scientifically justifiably possible to convert monitoring results into national population estimates in individuals, due to the large variation in abundance, both spatially and temporally, of the various subpopulations.	

## 7. HABITAT FOR THE SPECIES

7.1 Sufficiency of area and quality of occupied habitat	a) Is area of occupied habitat sufficient (for long-term survival)? Yes
	b) Is quality of occupied habitat sufficient (for long-term survival)? Yes
	c) If NO to a) is there a sufficiently large area of unoccupied habitat of suitable quality (for long-term survival)?
	–

7.2 Sufficiency of area and quality of occupied habitat Method used	Area of habitat: Based mainly on expert opinion with very limited data	Quality of habitat: Based mainly on expert opinion with very limited data
7.3 Short-term trend Period	2013–2024	
7.4 Short-term trend Direction	increasing	
7.5 Short-term trend Method used	Based mainly on expert opinion with very limited data	
7.6 Long-term trend Period (Optional)	–	
7.7 Long-term trend Direction (Optional)	–	
7.8 Long-term trend Method used (Optional)	–	
7.9 Additional information (Optional)	–	

## 8. MAIN PRESSURES AND THREATS

### 8.1 Characterisation of pressures

Pressure	Timing	Scope (proportion of population affected)	Influence (on population or habitat of the species)	Invasive alien species of Union concern	Other invasive alien species
<b>PI01</b> Problematic species - Invasive alien species of Union concern	ongoing	minority <50%	Low influence	<i>Ailanthus altissima</i>	
<b>PI02</b> Problematic species - Other invasive alien species (other than species of Union concern)	ongoing and likely to be in the future	minority <50%	Low influence		<i>Opuntia spp.</i> <i>Robinia pseudoacacia</i> <i>Syringa vulgaris</i>
<b>PB06</b> Forestry - Logging or thinning (excl. clear cutting)	ongoing and likely to be in the future	minority <50%	Low influence		
<b>PB07</b> Forestry - Removal of dead and dying trees (incl. debris)	ongoing and likely to be in the future	minority <50%	Low influence		
<b>PB15</b> Forestry - Wood transport	ongoing and likely to be in the future	minority <50%	Low influence		
<b>PC01</b> Extraction - Extraction of minerals	ongoing and likely to be in the future	minority <50%	Medium influence		
<b>PE01</b> Transport - Roads, paths, railroads and related infrastructure	ongoing and likely to be in the future	minority <50%	Low influence		

<b>PF01</b> Infrastructure - Conversion from other land uses to built-up areas	ongoing and likely to be in the future	minority <50%	Low influence		
<b>PF02</b> Infrastructure - Infrastructure or modification in existing built-up areas	ongoing and likely to be in the future	minority <50%	Medium influence		
<b>PF03</b> Infrastructure - Creation of development of sports, tourism and leisure infrastructure	ongoing and likely to be in the future	minority <50%	Low influence		
<b>PF05</b> Infrastructure - Sports, tourism and leisure activities	ongoing and likely to be in the future	majority 50 – 90%	Low influence		
<b>PG09</b> Species exploitation - Management of fishing stocks and game	ongoing and likely to be in the future	majority 50 – 90%	Low influence		
<b>PI03</b> Problematic species - Problematic native species	ongoing and likely to be in the future	majority 50 – 90%	Low influence		
8.2 Methods used (Optional)	–				
8.3 Sources of information (Optional)	–				
8.4 Additional information (Optional)	–				

## 9. CONSERVATION MEASURES

9.1 Status of measures	<p>Are measures needed?</p> <p>Yes</p> <p>Status of measures:</p> <p>Part of measures identified have been taken</p>
9.2 Scope of measures taken	<50%
9.3 Main purpose of the measures taken	<p>A. Indicate the main purpose(s) of measures taken:</p> <p>Maintain the current range, population and/or habitat for the species</p> <p>B. The main (primary) purpose:</p> <p>Maintain current state</p>
9.4 Location of the measures taken	Both inside and outside Natura 2000

9.5 Response to the measures <i>(when the measures start to neutralize the pressure(s) and produce positive effects)</i>	Medium-term response (within the next two reporting periods, 2025–2036)
9.6 List of main conservation measures	<p>MB05 – Adapt/change forest management and exploitation practices</p> <p>MC01 – Adapt/manage extraction of non-energy resources</p> <p>ME01 – Reduce impact of transport operation and infrastructure</p> <p>MF01 – Managing the impacts of converting land for construction and development of infrastructure</p> <p>MF03 – Reduce impact of outdoor sports, leisure and recreational activities (incl. restoration of habitats)</p> <p>MG03 – Reducing the impact of (re-) stocking for fishing and hunting, of artificial feeding and predator control</p> <p>MI01 – Early detection and rapid eradication of invasive alien species of Union concern</p> <p>MI02 – Management, control or eradication of established invasive alien species of Union concern</p> <p>MI03 – Management, control or eradication of other invasive alien species</p> <p>MI04 – Restoration of habitats affected by invasive alien species (incl. of Union concern and others)</p> <p>MI05 – Management of problematic native species</p>
9.7 Additional information (Optional)	–

## 10. FUTURE PROSPECTS

10.1 Future prospects of parameters	a) Range	Good
	b) Population	Good
	c) Habitat of the species	Good
10.2 Additional information (Optional)	–	

## 11. CONCLUSIONS

### *Assessment of conservation status at end of reporting period*

11.1 Range	Favourable (FV)
11.2 Population	Favourable (FV)
11.3 Habitat for the species	Favourable (FV)
11.4 Future prospects	Favourable (FV)
11.5 Overall assessment of Conservation Status	Favourable (FV)
11.6 Overall trend in Conservation Status	improving
11.7 Change and reasons for change in conservation status and conservation	Overall assessment of conservation status (11.5)

status trend	<i>Indicate whether there is a change from the previous reporting round and (if yes) the nature of that change.</i>	yes, due to genuine change yes, due to improved knowledge/more accurate data
	<i>The change is mainly due to:</i>	improved knowledge or more accurate data
	Overall trend in conservation status (11.6)	
	<i>Indicate whether there is a change from the previous reporting round and (if yes) the nature of that change.</i>	no, there is no difference
	<i>The change is mainly due to:</i>	
11.8 Additional information (Optional)	–	

## 12. NATURA 2000 (PROPOSED SITES OF COMMUNITY IMPORTANCE (PSCIs), SITES OF COMMUNITY IMPORTANCE (SCIs) AND SPECIAL AREAS OF CONSERVATION (SACs) COVERAGE FOR ANNEX II SPECIES OF DIRECTIVE 92/43/EEC

12.1 Population size inside the pSCIs, SCIs and SACs network (on the biogeographical/marine level including all sites where the species is present)	a) Unit	–
	b) Minimum	–
	c) Maximum	–
	d) Best single value	–
12.2 Type of estimate	–	
12.3 Additional population size (using population unit other than reporting unit in field 6.2) (Optional)	a) Unit	–
	b) Minimum	–
	c) Maximum	–
	d) Best single value	–
12.4 Type of estimate (Optional)	–	
12.5 Population size inside the network Method used	–	
12.6 Short-term trend of population size within the network Direction	–	

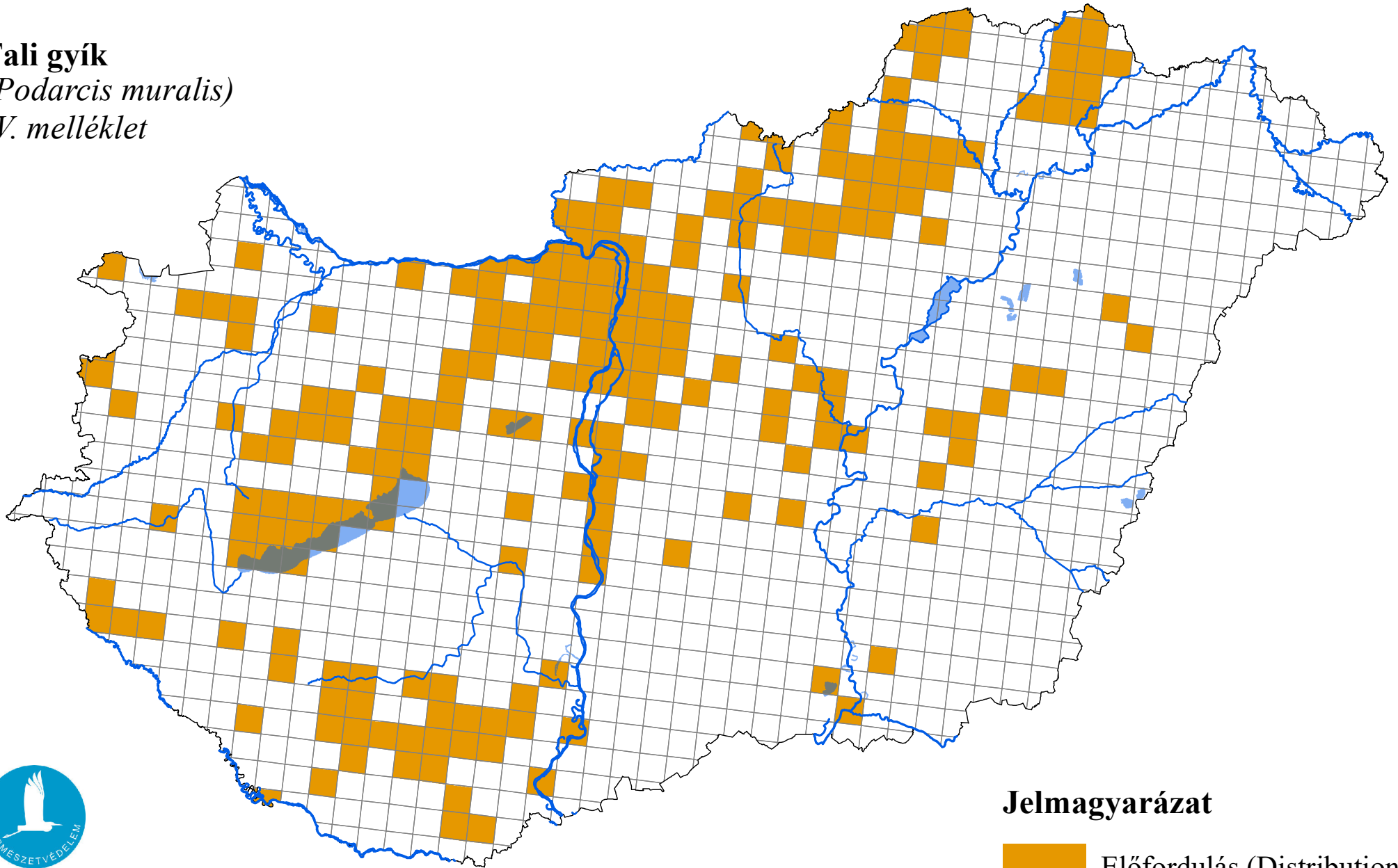
12.7 Short-term trend of population size within the network Method used	–
12.8 Short-term trend of habitat for the species within the network Direction	–
12.9 Short-term trend of habitat for the species within the network Method used	–
12.10 Additional information (Optional)	–

### 13. COMPLEMENTARY INFORMATION

13.1 Justification of % thresholds for trends	–
13.2 Trans-boundary assessment	–
13.3 Other relevant information	–

# Az élőhelyvédelmi irányelv 17. cikke alapján készített országjelentés, 2025

**Fali gyík**  
(*Podarcis muralis*)  
IV. melléklet



Forrás: Agrárminisztérium,  
Természetmegőrzési Főosztály

## Jelmagyarázat

 Előfordulás (Distribution)

0 25 50 Kilometers  
