

# REPORT ON THE 'MAIN RESULTS OF THE SURVEILLANCE UNDER ARTICLE 17' FOR ANNEX II, IV AND V SPECIES OF DIRECTIVE 92/43/EEC

## NATIONAL LEVEL

### 1. GENERAL INFORMATION

1.1 Member State	HU
1.2 Species code	4055
1.3 Species scientific name	<i>Stenobothrus eurasius</i>
1.4 Alternative species scientific name (Optional)	
1.5 Common name (Optional)	eurázsiai rétisáska

### 2. MAPS

*Distribution of the species within the Member State concerned.*

2.1 Sensitive species	No
2.2 Year or period	2019–2024
2.3 Distribution map	Yes
2.4 Distribution map Method used	Based mainly on extrapolation from a limited amount of data
2.5 Additional maps (Optional)	–
2.6 Additional information (Optional)	–

### 3. INFORMATION RELATED TO ANNEX V SPECIES (ART. 14 OF DIRECTIVE 92/43/EEC)

3.1 Is the species taken in the wild/exploited?	No	
3.2 Are measures needed for the species (only for species in favourable conservation status)?	No	
3.3 Which of the measures in Art. 14 have been taken?	a) regulations regarding access to property	–
	b) temporary or local prohibition of the taking of specimens in the wild and exploitation	–
	c) regulation of the periods and/or methods of taking specimens	–

	d) application of hunting and fishing rules which take account of the conservation of such populations	–					
	e) establishment of a system of licences for taking specimens or of quotas	–					
	f) regulation of the purchase, sale, offering for sale, keeping for sale or transport for sale of specimens	–					
	g) breeding in captivity of animal species as well as artificial propagation of plant species	–					
	h) other measures, if yes, describe	–					
3.4 Hunting bag or quantity taken in the wild regardless of conservation status - for Mammals and Acipenseridae (Fish)	a) Unit	–					
	b) Statistics/ quantity taken	<i>Provide statistics/quantity taken per hunting season or per year (where season is not used) over the reporting period</i>					
		Season/ year 1	Season/ year 2	Season/ year 3	Season/ year 4	Season/ year 5	Season/ year 6
	Min. (raw, i.e. not rounded)						
	Max. (raw, i.e. not rounded)						
	Unknown	–	–	–	–	–	–
3.5 Hunting bag or quantity taken in the wild Method used	–						
3.6 Additional information (Optional)	–						

## BIOGEOGRAPHICAL LEVEL

*Complete for each biogeographical region or marine region concerned.*

### 4. BIOGEOGRAPHICAL AND MARINE REGIONS

4.1 Biogeographical or marine region where the species occurs	<b>Pannonian</b>
4.2 First time reporting	No
4.3 Additional information	–

4.4 Sources of information	<ul style="list-style-type: none"> <li>• „A közösségi jelentőségű fajok és élőhelyek megőrzését szolgáló tudásbázis fejlesztése ” (KEHOP-4.3.0-VEKOP-15-2016-00001) projekt adatai 2017-2019</li> <li>• A Nemzeti Biodiverzitás-monitorozó Rendszer 2010-2024 közti felméréseinek jelentései</li> <li>• Nagy A. &amp; Rácz I.A. (2014): Magyar tarsza, Stys-tarsza, Erdélyi avarszöcske, Álolaszsáska, Vöröslábú hegyisáska, Eurázsiai rétisáska. In: Haraszthy L. (szerk.): Natura 2000 fajok és élőhelyek Magyarországon. Csákvár: Pro Vértes Természetvédelmi Közalapítvány, 2014. pp. 190-204.</li> <li>• Erdélyi, A., Nagy, B., Puskás, G. &amp; Szövényi, G. (2017) The Orthoptera fauna of Börzsöny Mountains, Hungary. ARTICULATA (2017) 32: 59–82.</li> <li>• Kenyeres, Z., Kisbenedek, T. &amp; Szövényi G. (2013) Orthoptera fauna of the Kisalföld (Western-Hungary) FOLIA HISTORICO-NATURALIA MUSEI MATRAENSIS 37: 47–64 pp.</li> <li>• KENYERES Z. &amp; RÁCZ I. A. (2013) A Bakonyvidék állatföldrajzi felosztása az egyenesszárnyúak (Orthoptera) elterjedési mintázatai alapján. FOLIA MUSEI HISTORICO-NATURALIS BAKONYIENSIS. Zirc, (30) 83-100. pp.</li> </ul>
----------------------------	---

## 5. RANGE

*Range within the biogeographical/marine region concerned.*

5.1 Surface area (km <sup>2</sup> )	2463	
5.2 Change and reason for change in surface area of range and main reason	Is there a change between reporting periods? yes, due to improved knowledge/more accurate data	
	The change is mainly due to: improved knowledge or more accurate data	
5.3 Short-term trend Period	2013–2024	
5.4 Short-term trend Direction	stable	
5.5 Short-term trend Magnitude (Optional)	a) Estimated Minimum	–
	b) Estimated Maximum	–
	c) Pre-defined range	–
	d) Unknown	–
5.6. Short-term trend Magnitude Type of estimate (Optional)	–	
5.7 Short-term trend Method used	Based mainly on extrapolation from a limited amount of data	
5.8 Long-term trend Period (Optional)	–	
5.9 Long-term trend Direction (Optional)	–	
5.10 Long-term trend Magnitude (Optional)	a) Minimum	–
	b) Maximum	–

5.11 Long-term trend Method used (Optional)	–	
5.12 Favourable reference range	a) –	
	b) <i>if a precise favourable reference range is unknown indicate if the range is:</i> approximately equal to the favourable reference range (less than 2% smaller)	
	c) –	
	d) <i>Indicate method used to set reference value (multiple methods can be chosen)</i>	<i>Indicate the quality of information available:</i>
	Reference-based approach	Moderate
	Expert opinion	
5.13 Range when Directive came into force (Optional)	–	
5.14 Additional information (Optional)	–	

## 6. POPULATION

*Population within the biogeographical/marine region concerned.*

6.1 Year or period	2019–2024	
6.2 Population size (in reporting unit)	a) Unit	number of map 1x1 km grid cells
	b) Minimum	–
	c) Maximum	–
	d) Best single value	48
	e) Class	
6.3 Type of estimate	minimum	
6.4 Quality of extrapolation to reporting unit (Optional)	–	
6.5 Additional population size (using population unit other than reporting unit) (Optional)	a) Unit	–
	b) Minimum	–
	c) Maximum	–
	d) Best single value	–
6.6 Type of estimate (Optional)	–	
6.7 Population size Method used	Based mainly on extrapolation from a limited amount of data	
6.8 Change and reason for change in population size and main reason	Is there a change between reporting periods? yes, due to genuine change yes, due to improved knowledge/more accurate data	

	The change is mainly due to: improved knowledge or more accurate data	
6.9 Short-term trend Period	2013–2024	
6.10 Short-term trend Direction	decreasing	
6.11 Short-term trend Magnitude	a) Estimated Minimum	–
	b) Estimated Maximum	–
	c) Pre-defined range	–
	d) Unknown	Unknown
6.12 Short-term trend Magnitude Type of estimate	Best estimate	
6.13 Short-term trend Method used	Based mainly on extrapolation from a limited amount of data	
6.14 Long-term trend Period (Optional)	–	
6.15 Long-term trend Direction (Optional)	–	
6.16 Long-term trend Magnitude (Optional)	a) Minimum	–
	b) Maximum	–
	c) Confidence interval	–
6.17 Long-term trend Method used (Optional)	–	
6.18 Favourable reference population	<i>a) Population size (with unit):</i>	
	<i>b) if a precise favourable reference population is unknown indicate if the population is: between 5% and 25% smaller than the FRP</i>	
	<i>c) Indicate if favourable reference population is unknown:</i> –	
	<i>d) Indicate method used to set reference value (multiple methods can be chosen)</i>	<i>Indicate the quality of information available:</i>
	Reference-based approach	Moderate
	Expert opinion	

6.19 Population size when Directive came into force (Optional)	–
6.20 Additional Information (Optional)	

## 7. HABITAT FOR THE SPECIES

7.1 Sufficiency of area and quality of occupied habitat	<p>a) Is area of occupied habitat sufficient (for long-term survival)? Yes</p> <p>b) Is quality of occupied habitat sufficient (for long-term survival)? No</p> <p>c) If NO to a) is there a sufficiently large area of unoccupied habitat of suitable quality (for long-term survival)? –</p>	
7.2 Sufficiency of area and quality of occupied habitat Method used	<p>Area of habitat: Based mainly on extrapolation from a limited amount of data</p>	<p>Quality of habitat: Based mainly on extrapolation from a limited amount of data</p>
7.3 Short-term trend Period	2013–2024	
7.4 Short-term trend Direction	decreasing	
7.5 Short-term trend Method used	Based mainly on extrapolation from a limited amount of data	
7.6 Long-term trend Period (Optional)	–	
7.7 Long-term trend Direction (Optional)	–	
7.8 Long-term trend Method used (Optional)	–	
7.9 Additional information (Optional)	–	

## 8. MAIN PRESSURES AND THREATS

### 8.1 Characterisation of pressures

Pressure	Timing	Scope (proportion of population affected)	Influence (on population or habitat of the species)	Invasive alien species of Union concern	Other invasive alien species
<b>PJ10</b> Climate change - Change of habitat location, size and/or quality	ongoing and likely to be in the future	majority 50 – 90%	Medium influence		
<b>PG09</b> Species exploitation - Management of fishing stocks and game	ongoing and likely to be in the future	minority <50%	Medium influence		

<b>PM07</b> Natural - Natural processes without direct or indirect influence from human activities or climate change	ongoing and likely to be in the future	majority 50 – 90%	Medium influence		
<b>PA05</b> Agriculture - Abandonment of management/use of grasslands and other agricultural and agroforestry systems	ongoing and likely to be in the future	majority 50 – 90%	Medium influence		
<b>PF05</b> Infrastructure - Sports, tourism and leisure activities	ongoing and likely to be in the future	minority <50%	Low influence		
<b>PH01</b> Safety - Military, paramilitary or police exercises and operations on land and freshwater	ongoing and likely to be in the future	minority <50%	Low influence		
<b>PJ11</b> Climate change - Desynchronisation of biological/ecological processes	ongoing and likely to be in the future	majority 50 – 90%	Low influence		
8.2 Methods used (Optional)	–				
8.3 Sources of information (Optional)	–				
8.4 Additional information (Optional)	–				

## 9. CONSERVATION MEASURES

9.1 Status of measures	<p>Are measures needed?</p> <p>Yes</p> <p>Status of measures:</p> <p>Measures identified, but none yet taken</p>
9.2 Scope of measures taken	–
9.3 Main purpose of the measures taken	–
	–
9.4 Location of the measures taken	–

9.5 Response to the measures <i>(when the measures start to neutralize the pressure(s) and produce positive effects)</i>	–
9.6 List of main conservation measures	<p>MA03 – Maintain existing extensive agricultural practices and agricultural landscape features</p> <p>MA05 – Adapt mowing, grazing and other equivalent agricultural activities (e.g. burning)</p> <p>MM01 – Management of habitats (others than agriculture and forest) to slow, stop or reverse natural processes that occur without direct or indirect influence from human activities or climate change</p> <p>MB01 – Prevent conversion of (semi-) natural habitats into forests and of (semi-) natural forests into intensive forest plantation</p> <p>MF03 – Reduce impact of outdoor sports, leisure and recreational activities (incl. restoration of habitats)</p> <p>MH01 – Reduce impact of military installations and activities</p>
9.7 Additional information (Optional)	–

## 10. FUTURE PROSPECTS

10.1 Future prospects of parameters	a) Range	Poor
	b) Population	Poor
	c) Habitat of the species	Poor
10.2 Additional information (Optional)	–	

## 11. CONCLUSIONS

### *Assessment of conservation status at end of reporting period*

11.1 Range	Favourable (FV)	
11.2 Population	Inadequate (U1)	
11.3 Habitat for the species	Inadequate (U1)	
11.4 Future prospects	Inadequate (U1)	
11.5 Overall assessment of Conservation Status	Inadequate (U1)	
11.6 Overall trend in Conservation Status	deteriorating	
11.7 Change and reasons for change in conservation status and conservation status trend	Overall assessment of conservation status (11.5)	
	<i>Indicate whether there is a change from the previous reporting round and (if yes) the nature of that change.</i>	no, there is no difference

	<i>The change is mainly due to:</i>	
	Overall trend in conservation status (11.6)	
	<i>Indicate whether there is a change from the previous reporting round and (if yes) the nature of that change.</i>	no, there is no difference
	<i>The change is mainly due to:</i>	
11.8 Additional information (Optional)	–	

## 12. NATURA 2000 (PROPOSED SITES OF COMMUNITY IMPORTANCE (PSCIs), SITES OF COMMUNITY IMPORTANCE (SCIs) AND SPECIAL AREAS OF CONSERVATION (SACs) COVERAGE FOR ANNEX II SPECIES OF DIRECTIVE 92/43/EEC

12.1 Population size inside the pSCIs, SCIs and SACs network (on the biogeographical/marine level including all sites where the species is present)	a) Unit	number of map 1x1 km grid cells
	b) Minimum	44
	c) Maximum	–
	d) Best single value	–
12.2 Type of estimate	<b>Best estimate</b>	
12.3 Additional population size (using population unit other than reporting unit in field 6.2) (Optional)	a) Unit	–
	b) Minimum	–
	c) Maximum	–
	d) Best single value	–
12.4 Type of estimate (Optional)	–	
12.5 Population size inside the network Method used	Based mainly on extrapolation from a limited amount of data	
12.6 Short-term trend of population size within the network Direction	decreasing	
12.7 Short-term trend of population size within the network Method used	Based mainly on extrapolation from a limited amount of data	

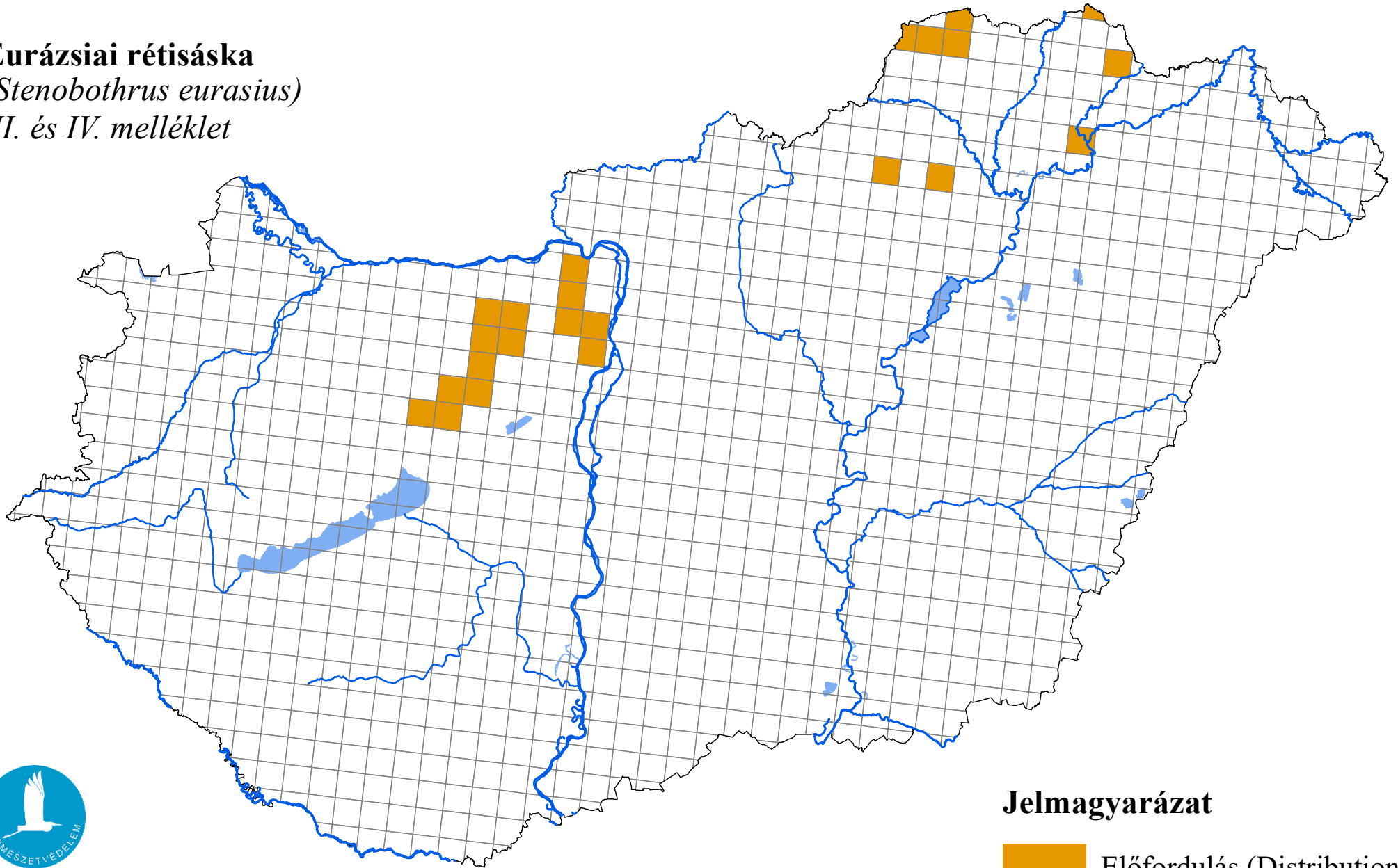
12.8 Short-term trend of habitat for the species within the network Direction	decreasing
12.9 Short-term trend of habitat for the species within the network Method used	Based mainly on extrapolation from a limited amount of data
12.10 Additional information (Optional)	–

### 13. COMPLEMENTARY INFORMATION

13.1 Justification of % thresholds for trends	–
13.2 Trans-boundary assessment	–
13.3 Other relevant information	–

# Az élőhelyvédelmi irányelv 17. cikke alapján készített országjelentés, 2025

**Eurázsiai rétisáska**  
(*Stenobothrus eurasius*)  
II. és IV. melléklet



Forrás: Agrárminisztérium,  
Természetmegőrzési Főosztály

**Jelmagyarázat**

