

# REPORT ON THE 'MAIN RESULTS OF THE SURVEILLANCE UNDER ARTICLE 17' FOR ANNEX II, IV AND V SPECIES OF DIRECTIVE 92/43/EEC

## NATIONAL LEVEL

### 1. GENERAL INFORMATION

1.1 Member State	HU
1.2 Species code	1040
1.3 Species scientific name	<i>Stylurus flavipes</i>
1.4 Alternative species scientific name (Optional)	<i>Gomphus flavipes</i>
1.5 Common name (Optional)	sárgás szitakötő, sárgalábú folyami-szitakötő

### 2. MAPS

*Distribution of the species within the Member State concerned.*

2.1 Sensitive species	No
2.2 Year or period	2019–2024
2.3 Distribution map	Yes
2.4 Distribution map Method used	Based mainly on extrapolation from a limited amount of data
2.5 Additional maps (Optional)	–
2.6 Additional information (Optional)	–

### 3. INFORMATION RELATED TO ANNEX V SPECIES (ART. 14 OF DIRECTIVE 92/43/EEC)

3.1 Is the species taken in the wild/exploited?	No	
3.2 Are measures needed for the species (only for species in favourable conservation status)?	No	
3.3 Which of the measures in Art. 14 have been taken?	a) regulations regarding access to property	–
	b) temporary or local prohibition of the taking of specimens in the wild and exploitation	–
	c) regulation of the periods and/or methods of taking specimens	–

	d) application of hunting and fishing rules which take account of the conservation of such populations	–					
	e) establishment of a system of licences for taking specimens or of quotas	–					
	f) regulation of the purchase, sale, offering for sale, keeping for sale or transport for sale of specimens	–					
	g) breeding in captivity of animal species as well as artificial propagation of plant species	–					
	h) other measures, if yes, describe	–					
3.4 Hunting bag or quantity taken in the wild regardless of conservation status - for Mammals and Acipenseridae (Fish)	a) Unit	–					
	b) Statistics/ quantity taken	<i>Provide statistics/quantity taken per hunting season or per year (where season is not used) over the reporting period</i>					
		Season/ year 1	Season/ year 2	Season/ year 3	Season/ year 4	Season/ year 5	Season/ year 6
	Min. (raw, i.e. not rounded)						
	Max. (raw, i.e. not rounded)						
	Unknown	–	–	–	–	–	–
3.5 Hunting bag or quantity taken in the wild Method used	–						
3.6 Additional information (Optional)	–						

## BIOGEOGRAPHICAL LEVEL

*Complete for each biogeographical region or marine region concerned.*

### 4. BIOGEOGRAPHICAL AND MARINE REGIONS

4.1 Biogeographical or marine region where the species occurs	<b>Pannonian</b>
4.2 First time reporting	No
4.3 Additional information	–

#### 4.4 Sources of information

Nemzeti Biodiverzitás-monitorozó Rendszer 2019-2024 közt végzett felméréseinek jelentései BioAqua Pro Kft. (2019): A Szigetköz vízpótló rendszerének makroszkopikus vízi gerinctelen közösségeken alapuló vizsgálata. - Kutatási jelentés, 44 pp. BioAqua Pro Kft. (2019): A Szigetköz vízpótló rendszerének makroszkopikus vízi gerinctelen közösségeken alapuló vizsgálata. – Kutatási jelentés, 47 pp. BioAqua Pro Kft. (2020): A Szigetköz vízpótló rendszerének makroszkopikus vízi gerinctelen közösségeken alapuló vizsgálata. – Kutatási jelentés, 50 pp. BioAqua Pro Kft. (2020): Nyugat-magyarországi közösségi jelentőségű élőhelyek, fajok és inváziós fajok elterjedésének és állományviszonyainak kutatása. BioAqua Pro Kft. (2020): Közösségi jelentőségű fajok elterjedésének és állományviszonyainak élőhelytérképe és térinformatikai adatbázisa. Bioaquapro Kft. (2021): Makroszkopikus vízi gerinctelen közösségek felmérése az NBmR protokoll alapján AQEM típusú mennyiségi mintavétellel 25 mintavételi helyen. – Kutatási jelentés Bioaquapro Kft. (2021): Közösségi jelentőségű makroszkopikus vízi gerinctelen fajok monitorozása. – Kutatási jelentés Csabai, Z. – Boda, P. – Borza, P. – Deák, Cs. – Málnás, K. – Móra, A. – Pernecker, B. (2019): Komplex vízi makroszkopikus gerinctelen faunafeltáró kutatás a Körös–Maros Nemzeti Park Igazgatóság működési területén található Nemzeti Park és Natura 2000 területeken. A Maros (HUKM20008). – Kutatási jelentés, Kézirat, a Körös–Maros Nemzeti Park Igazgatóság megbízása, Pécs, 42 pp. Csabai, Z. – Boda, P. – Borza, P. – Deák, Cs. – Málnás, K. – Móra, A. – Pernecker, B. – Szekeres, J. (2019): Komplex vízi makroszkopikus gerinctelen faunafeltáró kutatás a Körös–Maros Nemzeti Park Igazgatóság működési területén található Nemzeti Park és Natura 2000 területeken. A Fekete-, Fehér- és Kettős-Körös (HUKM20012) és a Sebes-Körös (HUKM20016). – Kutatási jelentés, Kézirat, a Körös–Maros Nemzeti Park Igazgatóság megbízása, Pécs, 78 pp. Csabai, Z. – Berta, J.B. – Boda, P. – Boóz, B. – Deák, Cs. – Málnás, K. – Móra, A. – Pernecker, B. (2020): Komplex vízi makroszkopikus gerinctelen faunafeltáró kutatás a Körös–Maros Nemzeti Park Igazgatóság működési területén található Nemzeti Park és Natura 2000 területeken. A Hármaskörös (HUKM20017) és a Hortobágy-Berettyó (HUKM20015). – Kutatási jelentés, Kézirat, a Körös–Maros Nemzeti Park Igazgatóság megbízása, Pécs, 57 pp. Innwater Zrt. (2020): Pinkán a Répcén és a Rábán létesített duzzasztók hatásának természetvédelmi szempontú vizsgálata. Müller, Z., Szabó, T., Gáspár, Á., Juhász, P., Ludányi, M., Málnás, K., ... & Kiss, B. (2019): Contribution to the Hungarian dragonfly fauna, based on the nationwide surveys (Odonata: Anisoptera). Folia historico-naturalia Musei Matraensis 43: 33-80.

## 5. RANGE

*Range within the biogeographical/marine region concerned.*

5.1 Surface area (km<sup>2</sup>)

22318

5.2 Change and reason for change in surface area of range and main reason

Is there a change between reporting periods?

yes, due to the use of different method

The change is mainly due to:

the use of a different method

5.3 Short-term trend Period	2013–2024	
5.4 Short-term trend Direction	stable	
5.5 Short-term trend Magnitude (Optional)	a) Estimated Minimum	–
	b) Estimated Maximum	–
	c) Pre-defined range	–
	d) Unknown	–
5.6. Short-term trend Magnitude Type of estimate (Optional)	–	
5.7 Short-term trend Method used	Based mainly on extrapolation from a limited amount of data	
5.8 Long-term trend Period (Optional)	–	
5.9 Long-term trend Direction (Optional)	–	
5.10 Long-term trend Magnitude (Optional)	a) Minimum	–
	b) Maximum	–
5.11 Long-term trend Method used (Optional)	–	
5.12 Favourable reference range	a) –	
	b) <i>if a precise favourable reference range is unknown indicate if the range is:</i> approximately equal to the favourable reference range (less than 2% smaller)	
	c) –	
	d) <i>Indicate method used to set reference value (multiple methods can be chosen)</i>	<i>Indicate the quality of information available:</i>
	Reference-based approach	Moderate
5.13 Range when Directive came into force (Optional)	–	
5.14 Additional information (Optional)	–	

## 6. POPULATION

*Population within the biogeographical/marine region concerned.*

6.1 Year or period	2019–2024	
6.2 Population size (in reporting unit)	a) Unit	number of map 1x1 km grid cells
	b) Minimum	554
	c) Maximum	604

	d) Best single value	–
	e) Class	
6.3 Type of estimate	minimum	
6.4 Quality of extrapolation to reporting unit (Optional)	–	
6.5 Additional population size (using population unit other than reporting unit) (Optional)	a) Unit	–
	b) Minimum	–
	c) Maximum	–
	d) Best single value	–
6.6 Type of estimate (Optional)	–	
6.7 Population size Method used	Based mainly on extrapolation from a limited amount of data	
6.8 Change and reason for change in population size and main reason	Is there a change between reporting periods? yes, due to improved knowledge/more accurate data	
	The change is mainly due to: improved knowledge or more accurate data	
6.9 Short-term trend Period	2013–2024	
6.10 Short-term trend Direction	stable	
6.11 Short-term trend Magnitude	a) Estimated Minimum	–
	b) Estimated Maximum	–
	c) Pre-defined range	–
	d) Unknown	–
6.12 Short-term trend Magnitude Type of estimate	Best estimate	
6.13 Short-term trend Method used	Based mainly on extrapolation from a limited amount of data	
6.14 Long-term trend Period (Optional)	–	
6.15 Long-term trend Direction (Optional)	–	
6.16 Long-term trend Magnitude (Optional)	a) Minimum	–
	b) Maximum	–
	c) Confidence interval	–
6.17 Long-term trend Method used (Optional)	–	

6.18 Favourable reference population	<i>a) Population size (with unit):</i>	
	<i>b) if a precise favourable reference population is unknown indicate if the population is: approximately equal to the favourable reference population (less than 5% smaller)</i>	
	<i>c) Indicate if favourable reference population is unknown:</i> –	
	<i>d) Indicate method used to set reference value (multiple methods can be chosen)</i>	<i>Indicate the quality of information available:</i>
	Expert opinion	
6.19 Population size when Directive came into force (Optional)	–	
6.20 Additional Information (Optional)		

## 7. HABITAT FOR THE SPECIES

7.1 Sufficiency of area and quality of occupied habitat	<p>a) Is area of occupied habitat sufficient (for long-term survival)? <b>Yes</b></p> <p>b) Is quality of occupied habitat sufficient (for long-term survival)? <b>Yes</b></p> <p>c) If NO to a) is there a sufficiently large area of unoccupied habitat of suitable quality (for long-term survival)? –</p>	
7.2 Sufficiency of area and quality of occupied habitat Method used	<p>Area of habitat: Based mainly on extrapolation from a limited amount of data</p>	<p>Quality of habitat: Based mainly on expert opinion with very limited data</p>
7.3 Short-term trend Period	2013–2024	
7.4 Short-term trend Direction	stable	
7.5 Short-term trend Method used	Based mainly on expert opinion with very limited data	
7.6 Long-term trend Period (Optional)	–	
7.7 Long-term trend Direction (Optional)	–	
7.8 Long-term trend Method used (Optional)	–	

7.9 Additional information  
(Optional)

—

## 8. MAIN PRESSURES AND THREATS

### 8.1 Characterisation of pressures

Pressure	Timing	Scope (proportion of population affected)	Influence (on population or habitat of the species)	Invasive alien species of Union concern	Other invasive alien species
<b>PA17</b> Agriculture - Agricultural activities generating pollution to surface or ground waters	ongoing and likely to be in the future	majority 50 – 90%	Medium influence		
<b>PD02</b> Energy - Hydropower (dams, weirs, run-off the river and infrastructure)	ongoing and likely to be in the future	majority 50 – 90%	High influence		
<b>PF07</b> Infrastructure - Residential and commercial activities and structures generating pollution to surface or ground waters	ongoing and likely to be in the future	majority 50 – 90%	Medium influence		
<b>PL06</b> Water regimes - Physical alteration of water bodies	ongoing and likely to be in the future	whole >90%	High influence		
<b>PK01</b> Pollution - Mixed source pollution to surface and ground waters (limnic and terrestrial)	ongoing and likely to be in the future	whole >90%	High influence		
<b>PL05</b> Water regimes - Modification of hydrological flow	ongoing and likely to be in the future	whole >90%	High influence		
<b>PE02</b> Transport - Shipping lanes and ferry lanes transport operations	ongoing and likely to be in the future	minority <50%	Medium influence		
<b>PA21</b> Agriculture - Active abstraction of water for agriculture	ongoing and likely to be in the future	minority <50%	Medium influence		

8.2 Methods used  
(Optional)

—

8.3 Sources of  
information (Optional)

—

8.4 Additional  
information (Optional)

—

## 9. CONSERVATION MEASURES

9.1 Status of measures	<p>Are measures needed?</p> <p>Yes</p> <p>Status of measures:</p> <p>Part of measures identified have been taken</p>	
9.2 Scope of measures taken	<50%	
9.3 Main purpose of the measures taken	<p>A. Indicate the main purpose(s) of measures taken:</p> <p>Maintain the current range, population and/or habitat for the species Restore the habitat of the species (related to 'Habitat for the species')</p> <p>B. The main (primary) purpose:</p> <p>Restore habitat</p>	
9.4 Location of the measures taken	Only inside Natura 2000	
9.5 Response to the measures <i>(when the measures start to neutralize the pressure(s) and produce positive effects)</i>	Medium-term response (within the next two reporting periods, 2025–2036)	
9.6 List of main conservation measures	<p>MF07 – Reduce/eliminate pollution (incl. noise, light, heat, soil pollution) from industrial, commercial, residential and recreational areas and activities</p> <p>MC04 – Reduce impact of hydropower operation and infrastructure (incl. the restoration of freshwater habitats)</p> <p>MA10 – Reduce/eliminate point or diffuse source pollution to surface or ground waters (including marine) from agricultural activities</p> <p>MK01 – Reduce impact of mixed source pollution</p> <p>MK03 – Restoration of habitats impacted by multi-purpose hydrological changes</p> <p>MF08 – Manage changes in hydrological and coastal systems and regimes for construction and development (incl. restoration of habitats).</p> <p>ME01 – Reduce impact of transport operation and infrastructure</p>	
9.7 Additional information (Optional)	–	

## 10. FUTURE PROSPECTS

10.1 Future prospects of parameters	a) Range	Good
	b) Population	Good
	c) Habitat of the species	Good
10.2 Additional information (Optional)	–	

## 11. CONCLUSIONS

*Assessment of conservation status at end of reporting period*

11.1 Range	Favourable (FV)	
11.2 Population	Favourable (FV)	
11.3 Habitat for the species	Favourable (FV)	
11.4 Future prospects	Favourable (FV)	
11.5 Overall assessment of Conservation Status	Favourable (FV)	
11.6 Overall trend in Conservation Status	stable	
11.7 Change and reasons for change in conservation status and conservation status trend	Overall assessment of conservation status (11.5)	
	<i>Indicate whether there is a change from the previous reporting round and (if yes) the nature of that change.</i>	no, there is no difference
	<i>The change is mainly due to:</i>	
	Overall trend in conservation status (11.6)	
	<i>Indicate whether there is a change from the previous reporting round and (if yes) the nature of that change.</i>	no, there is no difference
	<i>The change is mainly due to:</i>	
11.8 Additional information (Optional)	–	

## 12. NATURA 2000 (PROPOSED SITES OF COMMUNITY IMPORTANCE (PSCIs), SITES OF COMMUNITY IMPORTANCE (SCIs) AND SPECIAL AREAS OF CONSERVATION (SACs) COVERAGE FOR ANNEX II SPECIES OF DIRECTIVE 92/43/EEC

12.1 Population size inside the pSCIs, SCIs and SACs network (on the biogeographical/marine level including all sites where the species is present)	a) Unit	–
	b) Minimum	–
	c) Maximum	–
	d) Best single value	–
12.2 Type of estimate	–	
12.3 Additional population size (using population unit other than reporting unit in field 6.2) (Optional)	a) Unit	–
	b) Minimum	–
	c) Maximum	–

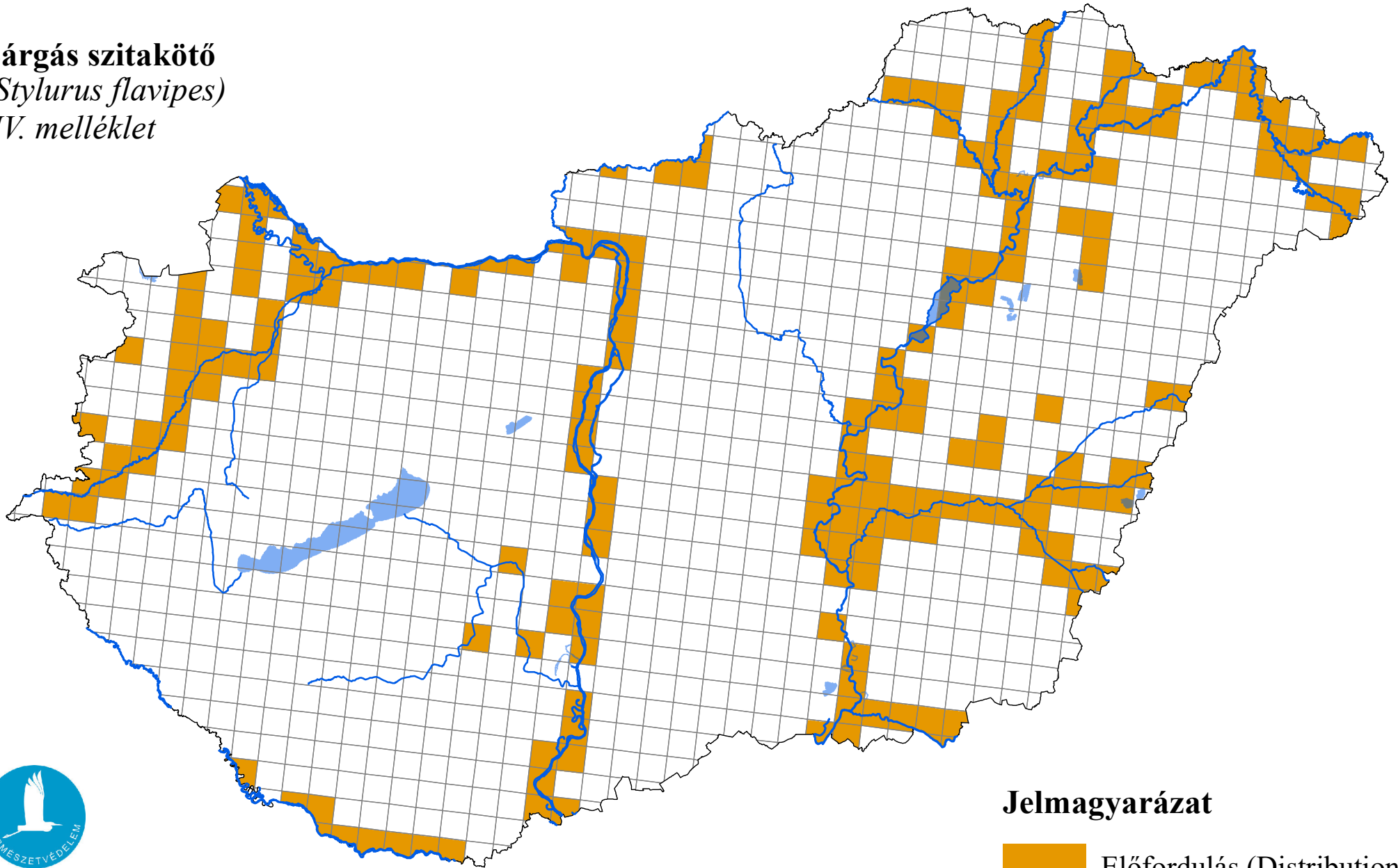
	d) Best single value	–
12.4 Type of estimate (Optional)		–
12.5 Population size inside the network Method used		–
12.6 Short-term trend of population size within the network Direction		–
12.7 Short-term trend of population size within the network Method used		–
12.8 Short-term trend of habitat for the species within the network Direction		–
12.9 Short-term trend of habitat for the species within the network Method used		–
12.10 Additional information (Optional)		–

### 13. COMPLEMENTARY INFORMATION

13.1 Justification of % thresholds for trends		–
13.2 Trans-boundary assessment		–
13.3 Other relevant information		–

# Az élőhelyvédelmi irányelv 17. cikke alapján készített országjelentés, 2025

**Sárgás szitakötő**  
(*Stylurus flavipes*)  
IV. melléklet



Forrás: Agrárminisztérium,  
Természetmegőrzési Főosztály

## Jelmagyarázat

