

## PART B - BIRD SPECIES' STATUS AND TRENDS REPORT FORMAT

### 1. SPECIES INFORMATION

1.1 Member State	HU
1.2 Species code	A142
1.3 EURING code	4930
1.4 Species scientific name	<i>Vanellus vanellus</i>
1.5 Subspecific population	
1.6 Alternative species scientific name (Optional)	
1.7 Common name (Optional)	

### 2. SEASON

2.1 Season	Breeding
2.2 First time reporting	No
2.3 Additional information	

### 3. POPULATION SIZE

3.1 Year or period	2019-2024	
3.2 Population size	a) Unit	number of pairs
	b) Minimum	8400
	c) Maximum	16500
	d) Best single value	–
3.3 Type of estimate	Best estimate	
3.4 Population size Method used	Based mainly on expert opinion with very limited data	
3.5 Sources	Szép et. al (2022): Bird Atlas of Hungary ( <a href="https://mme.hu/madaratlasz">https://mme.hu/madaratlasz</a> )	
3.6 Change and reason for change (since previous report)	Is there a change between reporting periods? yes, due to the use of different method	
	The change is mainly due to: the use of different method	
3.7 Additional information (Optional)		

### 4. POPULATION TREND

4.1 Short-term trend (last 12 years)

4.1.1 Short-term trend Period	2013-2024	
4.1.2 Short-term trend Direction	decreasing	
4.1.3 Short-term trend Magnitude	a) Minimum	-61
	b) Maximum	-17
	c) Best single value	-37
4.1.4 Short-term trend Method used	Based mainly on extrapolation from a limited amount of data	
4.1.5 Sources	Common bird monitoring scheme (MMM) database ( <a href="https://mmm.mme.hu">https://mmm.mme.hu</a> )	
<b>4.2 Long-term trend (since ca. 1980)</b>		
4.2.1 Long-term trend Period	1980-2024	
4.2.2 Long-term trend Direction	decreasing	
4.2.3 Long-term trend Magnitude	a) Minimum	-85
	b) Maximum	-80
	c) Best single value	–
4.2.4 Long-term trend Method used	Based mainly on expert opinion with very limited data	
4.2.5 Sources	Tucker, G. M. – Heath, M. F. (1994): Birds in Europe – Their Conservation Status. RSPB, BirdLife International; Szép et. al (2022): Bird Atlas of Hungary ( <a href="https://mme.hu/madaratlasz">https://mme.hu/madaratlasz</a> )	
4.3 Additional information (Optional)	First estimates were published in 1998 (Magyar et al.), at 50,000-100,000 pairs. Population probably was stable between the 1980s and the 1990s.	

## 5. BREEDING DISTRIBUTION MAP AND SIZE

5.1 Sensitive species	No
5.2 Year or period	2019-2024
5.3 Breeding distribution map	Yes
5.4 Breeding distribution size	47295
5.5 Breeding distribution Method used	Based mainly on extrapolation from a limited amount of data
5.6 Additional maps Optional	No
5.7 Sources	MME's Bird Atlas Database ( <a href="https://map.mme.hu">https://map.mme.hu</a> ) - all breeding probabilities
5.8 Additional information Optional	

## 6. BREEDING DISTRIBUTION TREND

6.1 Short-term trend (last 12 years)

6.1.1 Short-term trend Period	2013-2024	
6.1.2 Short-term trend Direction	decreasing	
6.1.3 Short-term trend Magnitude	a) Minimum	–
	b) Maximum	–
	c) Best single value	-13
6.1.4 Short-term trend Method used	Based mainly on extrapolation from a limited amount of data	
6.1.5 Sources	MME/BirdLife Hungary's Bird Atlas database, Szép et. al (2022): Bird Atlas of Hungary ( <a href="https://mme.hu/madaratlasz">https://mme.hu/madaratlasz</a> )	
<b>6.2 Long-term trend (since ca. 1980)</b>		
6.2.1 Long-term trend Period	1980-2024	
6.2.2 Long-term trend Direction	decreasing	
6.2.3 Long-term trend Magnitude	a) Minimum	–
	b) Maximum	–
	c) Best single value	-24
6.2.4 Long-term trend Method used	Based mainly on expert opinion with very limited data	
6.2.5 Sources	Haraszthy L. (szerk.) (1984): Magyarország fészkelő madarai. Natura, Budapest.; Szép et. al (2022): Bird Atlas of Hungary ( <a href="https://mme.hu/madaratlasz">https://mme.hu/madaratlasz</a> )	
6.3 Additional information Optional		

## 7. MAIN PRESSURES AND THREATS

### 7.1 Characterisation of pressures

Pressure	Timing	Scope (proportion of population affected)	Influence (on population or habitat of the species)	Location (where the pressure is primarily operating)	Invasive alien species of Union concern	Other invasive alien species
----------	--------	---	---	--	---	------------------------------

7.2 Methods used (Optional) Based mainly on expert opinion with very limited data

7.3 Sources of information (Optional) Szép et. al (2022): Bird Atlas of Hungary (<https://mme.hu/madaratlasz>)

7.4 Additional information (Optional)

## 8. CONSERVATION MEASURES

8.1 Status of measures  
Are measures needed?  
No

8.2 Scope of measures taken	–
8.3 Main purpose of the measures taken	–
	–
8.4 Location of the measures	–
8.5 Response to the measures (when the measures start to neutralize the pressure(s) and produce positive effects)	–
8.6 List of main conservation measures	–
8.7 Additional information Optional	

### 9. NATURA 2000 (SPECIAL PROTECTION AREAS (SPAS)) COVERAGE

9.1 Population size inside the Natura 2000 (Special Protection Area (SPA)) network (on national level including all sites where the species is present)	a) Unit	–
	b) Minimum	–
	c) Maximum	–
	d) Best single value	–
9.2 Type of estimate	–	
9.3 Population size inside the network Method used	–	
9.4 Short-term trend of population size within the network Direction	–	
9.5 Short-term trend of population size within the network Method used	–	
9.6 Additional information (Optional)		

### 10. PROGRESS IN WORK RELATED TO INTERNATIONAL SPECIES ACTION PLANS (SAPs), MANAGEMENT PLANS (MPs) AND BRIEF MANAGEMENT STATEMENTS (BMSs)

10.1 Type of international plan	Management plan
10.2 Has a national plan linked to the international Species Action Plan (SAP) / Management Plan (MP) / Brief Management Statement (BMS) been adopted?	Yes

10.3 Assessment of the effectiveness of Species Action Plans (SAPs) for globally threatened species	–
10.4 Assessment of the effectiveness of Management Plans (MPs) for huntable species in non-Secure status	further deteriorating
10.5 Sources of further information	<a href="https://termeszetvedelem.hu/fajmegorzesi-tervek-keszitesese-es-megvalositasa/">https://termeszetvedelem.hu/fajmegorzesi-tervek-keszitesese-es-megvalositasa/</a>

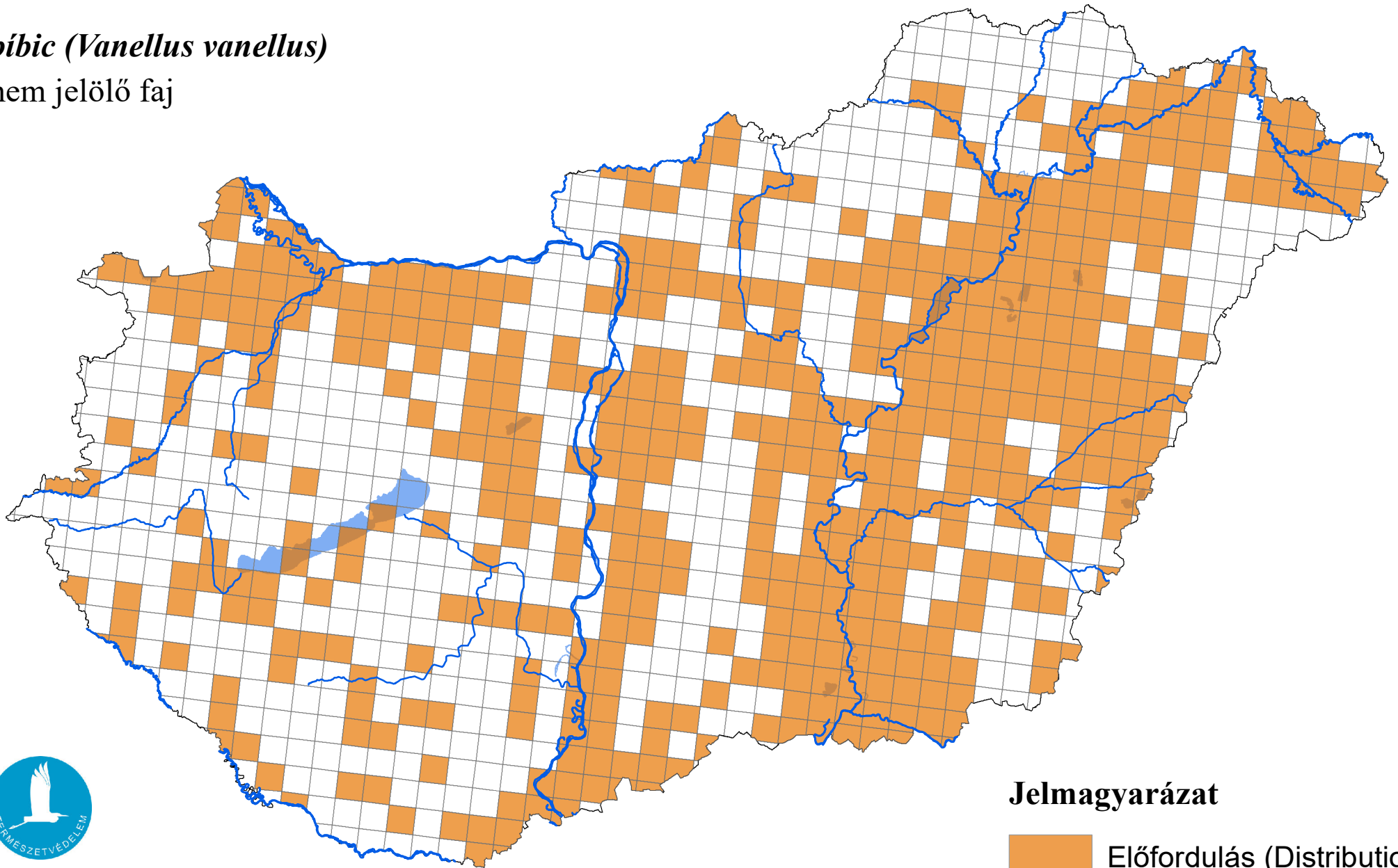
## 11. INFORMATION RELATED TO ANNEX II SPECIES OF DIRECTIVE 2009/147/EC

11.1 Is the species nationally hunted?	–						
11.2 Hunting bag	a) Unit	–					
	b) Season (optional)	–					
	c) Statistics / numbers (in individuals)	<i>Provide statistics per hunting season or per year (where season is not used) over the reporting period.</i>					
		Season/ year 1	Season/ year 2	Season/ year 3	Season/ year 4	Season/ year 5	Season/ year 6
	Min. (raw, i.e. not rounded)	–	–	–	–	–	–
	Max. (raw, i.e. not rounded)						
	Unknown	–	–	–	–	–	–
11.3 Hunting bag Method used	–						
11.4 Additional information Optional							

# A madárvédelmi irányelv 12. cikke alapján készített országjelentés, 2025

*bíbic (Vanellus vanellus)*

nem jelölő faj



Forrás: Agrárminisztérium,  
Természetmegőrzési Főosztály

## Jelmagyarázat

