

# REPORT ON THE 'MAIN RESULTS OF THE SURVEILLANCE UNDER ARTICLE 17' FOR ANNEX II, IV AND V SPECIES OF DIRECTIVE 92/43/EEC

## NATIONAL LEVEL

### 1. GENERAL INFORMATION

1.1 Member State	HU
1.2 Species code	1053
1.3 Species scientific name	<i>Zerynthia polyxena</i>
1.4 Alternative species scientific name (Optional)	
1.5 Common name (Optional)	farkasalmalepke

### 2. MAPS

*Distribution of the species within the Member State concerned.*

2.1 Sensitive species	No
2.2 Year or period	2019–2024
2.3 Distribution map	Yes
2.4 Distribution map Method used	Based mainly on extrapolation from a limited amount of data
2.5 Additional maps (Optional)	–
2.6 Additional information (Optional)	–

### 3. INFORMATION RELATED TO ANNEX V SPECIES (ART. 14 OF DIRECTIVE 92/43/EEC)

3.1 Is the species taken in the wild/exploited?	No	
3.2 Are measures needed for the species (only for species in favourable conservation status)?	No	
3.3 Which of the measures in Art. 14 have been taken?	a) regulations regarding access to property	–
	b) temporary or local prohibition of the taking of specimens in the wild and exploitation	–
	c) regulation of the periods and/or methods of taking specimens	–

	d) application of hunting and fishing rules which take account of the conservation of such populations	–					
	e) establishment of a system of licences for taking specimens or of quotas	–					
	f) regulation of the purchase, sale, offering for sale, keeping for sale or transport for sale of specimens	–					
	g) breeding in captivity of animal species as well as artificial propagation of plant species	–					
	h) other measures, if yes, describe	–					
3.4 Hunting bag or quantity taken in the wild regardless of conservation status - for Mammals and Acipenseridae (Fish)	a) Unit	–					
	b) Statistics/ quantity taken	<i>Provide statistics/quantity taken per hunting season or per year (where season is not used) over the reporting period</i>					
		Season/ year 1	Season/ year 2	Season/ year 3	Season/ year 4	Season/ year 5	Season/ year 6
	Min. (raw, i.e. not rounded)						
	Max. (raw, i.e. not rounded)						
	Unknown	–	–	–	–	–	–
3.5 Hunting bag or quantity taken in the wild Method used	–						
3.6 Additional information (Optional)	–						

## BIOGEOGRAPHICAL LEVEL

*Complete for each biogeographical region or marine region concerned.*

### 4. BIOGEOGRAPHICAL AND MARINE REGIONS

4.1 Biogeographical or marine region where the species occurs	<b>Pannonian</b>
4.2 First time reporting	No
4.3 Additional information	–

#### 4.4 Sources of information

www.izeltlabuak.hu A Nemzeti Biodiverzitás-monitorozó Rendszer 2019-2024 időszakban végzett felméréseinek jelentései Natura 2000 fenntartási tervek megalapozó adatai [http://stvsz.com/wp-content/uploads/2017/07/vedett\\_allatfajok\\_elterjedesi\\_atlasza\\_2016\\_dig.pdf](http://stvsz.com/wp-content/uploads/2017/07/vedett_allatfajok_elterjedesi_atlasza_2016_dig.pdf) Gergely P., Górá., Hudák T., Ilonczai Z., Szombathelyi E. (2017): Nappali lepkéink – Határozó terepre és természetfotókhoz / A Field Guide to the Butterflies of Hungary. Kitaibel Kiadó, pp. 1-264.

Szabadfalvi A. (2017): Védett, fokozottan védett és egyéb, természetvédelmi szempontból jelentős állatfajok természeti értékleltárának elkészítése a Bugaci homokpusztán – Lepkék. - Kutatási jelentés Danyik Tibor (2023): Natura 2000 jelölő fajok rovarfajok felmérése a Bélmegyeri Fás-pusztá kiemelt jelentőségű természetmegőrzési terület (HUKM20013), a Sarkadi Fási-erdő különleges természetmegőrzési terület (HUKM20021), az Orosi tölgyes különleges természetmegőrzési terület (HUKM20024) és a Gyantéi erdők különleges természetmegőrzési terület (HUKM20025) erdőrészeibe. Merkl Ottó (Lagria Bt.), Peregovits László (Pars Kft.), Erdélyi Arnold e. v.) (2020): Erdei élőhely-típusok ízeltlábú faunájának vizsgálata (bogarak, szitakötők, egyenesszárnyúak, lepkék) – Kutatási jelentés FHNPI: Madarász E. (2017): A farkasalmalepke (*Zerynthia polyxena* ([Denis & Schiffermüller], 1775)) populációinak vizsgálata az Ikva mentén. TDK dolgozat, Soproni Egyetem, Erdőmérnöki Kar, Erdőművelési és Erdővédelmi Intézet. Zöld Harkály Alapítvány (2020):Közösségi jelentőségű lepkéfajok általános faunisztikai felmérése nappali felvételekkel és fénycsapdás mintavételezéssel. Kutatási jelentés.40 p. Ambrus A. (szerk.) (2020): Lepketérkép- Győr-Moson-Sopron megye védett és veszélyeztetett lepkéfajainak elterjedési térképe (Rence 4.) Fertő-Hanság Nemzeti Park Igazgatóság, Sarród. Szabóky Cs. & Ambrus A. (2022): Sopron és környéke lepkéi. Orbiculosa Kiadó, Érd, 352 p. Salvinia Bt. (2020): A díszes tarkalepke (*Euphydryas maturna*) állományának felmérése transzekt menti számlálással. – kutatási jelentés Patalenszki A. (2022): Lepkefelmérések Natura 2000 területek célkitűzéseinek meghatározásához . – kutatási jelentés

## 5. RANGE

*Range within the biogeographical/marine region concerned.*

5.1 Surface area (km <sup>2</sup> )	44019
5.2 Change and reason for change in surface area of range and main reason	<p>Is there a change between reporting periods?</p> <p>yes, due to improved knowledge/more accurate data</p> <p>yes, due to the use of different method</p> <p>The change is mainly due to:</p> <p>improved knowledge or more accurate data</p>
5.3 Short-term trend Period	2013–2024
5.4 Short-term trend Direction	stable
5.5 Short-term trend Magnitude (Optional)	a) Estimated Minimum –

	b) Estimated Maximum	–
	c) Pre-defined range	–
	d) Unknown	–
5.6. Short-term trend Magnitude Type of estimate (Optional)	–	
5.7 Short-term trend Method used	Based mainly on extrapolation from a limited amount of data	
5.8 Long-term trend Period (Optional)	–	
5.9 Long-term trend Direction (Optional)	–	
5.10 Long-term trend Magnitude (Optional)	a) Minimum	–
	b) Maximum	–
5.11 Long-term trend Method used (Optional)	–	
5.12 Favourable reference range	a) –	
	b) <i>if a precise favourable reference range is unknown indicate if the range is:</i> approximately equal to the favourable reference range (less than 2% smaller)	
	c) –	
	d) <i>Indicate method used to set reference value (multiple methods can be chosen)</i>	<i>Indicate the quality of information available:</i>
	Reference-based approach	Moderate
	Expert opinion	
5.13 Range when Directive came into force (Optional)	–	
5.14 Additional information (Optional)	–	

## 6. POPULATION

*Population within the biogeographical/marine region concerned.*

6.1 Year or period	2019–2024	
6.2 Population size <i>(in reporting unit)</i>	a) Unit	number of map 1x1 km grid cells
	b) Minimum	–
	c) Maximum	–
	d) Best single value	1544
	e) Class	
6.3 Type of estimate	minimum	

6.4 Quality of extrapolation to reporting unit (Optional)	–	
6.5 Additional population size (using population unit other than reporting unit) (Optional)	a) Unit	–
	b) Minimum	–
	c) Maximum	–
	d) Best single value	–
6.6 Type of estimate (Optional)	–	
6.7 Population size Method used	Based mainly on extrapolation from a limited amount of data	
6.8 Change and reason for change in population size and main reason	Is there a change between reporting periods? yes, due to improved knowledge/more accurate data yes, due to the use of different method	
	The change is mainly due to: improved knowledge or more accurate data	
6.9 Short-term trend Period	2013–2024	
6.10 Short-term trend Direction	stable	
6.11 Short-term trend Magnitude	a) Estimated Minimum	–
	b) Estimated Maximum	–
	c) Pre-defined range	–
	d) Unknown	–
6.12 Short-term trend Magnitude Type of estimate	Best estimate	
6.13 Short-term trend Method used	Based mainly on extrapolation from a limited amount of data	
6.14 Long-term trend Period (Optional)	–	
6.15 Long-term trend Direction (Optional)	–	
6.16 Long-term trend Magnitude (Optional)	a) Minimum	–
	b) Maximum	–
	c) Confidence interval	–
6.17 Long-term trend Method used (Optional)	–	
6.18 Favourable reference population	<i>a) Population size (with unit):</i>	

	<p><i>b) if a precise favourable reference population is unknown indicate if the population is:</i> approximately equal to the favourable reference population (less than 5% smaller)</p>	
	<p><i>c) Indicate if favourable reference population is unknown:</i> –</p>	
	<p><i>d) Indicate method used to set reference value (multiple methods can be chosen)</i></p>	<p><i>Indicate the quality of information available:</i></p>
	<p>Expert opinion</p>	
6.19 Population size when Directive came into force (Optional)	<p>–</p>	
6.20 Additional Information (Optional)	<p></p>	

## 7. HABITAT FOR THE SPECIES

7.1 Sufficiency of area and quality of occupied habitat	<p>a) Is area of occupied habitat sufficient (for long-term survival)? Yes</p> <p>b) Is quality of occupied habitat sufficient (for long-term survival)? Yes</p> <p>c) If NO to a) is there a sufficiently large area of unoccupied habitat of suitable quality (for long-term survival)? –</p>	
7.2 Sufficiency of area and quality of occupied habitat Method used	<p>Area of habitat: Based mainly on expert opinion with very limited data</p>	<p>Quality of habitat: Based mainly on expert opinion with very limited data</p>
7.3 Short-term trend Period	<p>2013–2024</p>	
7.4 Short-term trend Direction	<p>stable</p>	
7.5 Short-term trend Method used	<p>Based mainly on expert opinion with very limited data</p>	
7.6 Long-term trend Period (Optional)	<p>–</p>	
7.7 Long-term trend Direction (Optional)	<p>–</p>	
7.8 Long-term trend Method used (Optional)	<p>–</p>	
7.9 Additional information (Optional)	<p>–</p>	

## 8. MAIN PRESSURES AND THREATS

### 8.1 Characterisation of pressures

Pressure	Timing	Scope (proportion of population affected)	Influence (on population or habitat of the species)	Invasive alien species of Union concern	Other invasive alien species
<b>PA06</b> Agriculture - Mowing or cutting of grasslands	ongoing and likely to be in the future	minority <50%	Medium influence		
<b>PA04</b> Agriculture - Removal of small landscape features for agricultural land parcel consolidation	ongoing and likely to be in the future	minority <50%	Medium influence		
<b>PA09</b> Agriculture - Burning for agriculture	ongoing and likely to be in the future	minority <50%	High influence		
<b>PH04</b> Safety - Vandalism or arson (incl. Human-introduced wild fire)	ongoing and likely to be in the future	minority <50%	High influence		
<b>PA14</b> Agriculture - Use of plant protection chemicals	ongoing and likely to be in the future	minority <50%	High influence		
<b>PF01</b> Infrastructure - Conversion from other land uses to built-up areas	ongoing and likely to be in the future	minority <50%	High influence		
<b>PE01</b> Transport - Roads, paths, railroads and related infrastructure	ongoing and likely to be in the future	minority <50%	High influence		
8.2 Methods used (Optional)	—				
8.3 Sources of information (Optional)	—				
8.4 Additional information (Optional)	—				

## 9. CONSERVATION MEASURES

9.1 Status of measures	<p>Are measures needed?</p> <p>Yes</p> <p>Status of measures:</p> <p>Part of measures identified have been taken</p>
9.2 Scope of measures taken	<50%
9.3 Main purpose of the measures taken	<p>A. Indicate the main purpose(s) of measures taken:</p> <p>Maintain the current range, population and/or habitat for the species</p>

	B. The main (primary) purpose: Maintain current state
9.4 Location of the measures taken	Both inside and outside Natura 2000
9.5 Response to the measures <i>(when the measures start to neutralize the pressure(s) and produce positive effects)</i>	Medium-term response (within the next two reporting periods, 2025–2036)
9.6 List of main conservation measures	MA01 – Prevent conversion of natural and semi-natural habitats, and habitats of species into agricultural land MA02 – Restore small landscape features on agricultural land MA05 – Adapt mowing, grazing and other equivalent agricultural activities (e.g. burning) MA09 – Manage the use of natural and synthetic fertilisers as well as chemicals in agricultural for plant and animal production MA04 – Reinstatement appropriate agricultural practices to address abandonment, including mowing, grazing, burning or equivalent measures MM01 – Management of habitats (others than agriculture and forest) to slow, stop or reverse natural processes that occur without direct or indirect influence from human activities or climate change
9.7 Additional information (Optional)	–

## 10. FUTURE PROSPECTS

10.1 Future prospects of parameters	a) Range	Good
	b) Population	Good
	c) Habitat of the species	Good
10.2 Additional information (Optional)	–	

## 11. CONCLUSIONS

### *Assessment of conservation status at end of reporting period*

11.1 Range	Favourable (FV)
11.2 Population	Favourable (FV)
11.3 Habitat for the species	Favourable (FV)
11.4 Future prospects	Favourable (FV)
11.5 Overall assessment of Conservation Status	Favourable (FV)
11.6 Overall trend in Conservation Status	stable

11.7 Change and reasons for change in conservation status and conservation status trend	Overall assessment of conservation status (11.5)	
	<i>Indicate whether there is a change from the previous reporting round and (if yes) the nature of that change.</i>	no, there is no difference
	<i>The change is mainly due to:</i>	
	Overall trend in conservation status (11.6)	
	<i>Indicate whether there is a change from the previous reporting round and (if yes) the nature of that change.</i>	no, there is no difference
	<i>The change is mainly due to:</i>	
11.8 Additional information (Optional)	–	

## 12. NATURA 2000 (PROPOSED SITES OF COMMUNITY IMPORTANCE (pSCIs), SITES OF COMMUNITY IMPORTANCE (SCIs) AND SPECIAL AREAS OF CONSERVATION (SACs) COVERAGE FOR ANNEX II SPECIES OF DIRECTIVE 92/43/EEC

12.1 Population size inside the pSCIs, SCIs and SACs network (on the biogeographical/marine level including all sites where the species is present)	a) Unit	–
	b) Minimum	–
	c) Maximum	–
	d) Best single value	–
12.2 Type of estimate	–	
12.3 Additional population size (using population unit other than reporting unit in field 6.2) (Optional)	a) Unit	–
	b) Minimum	–
	c) Maximum	–
	d) Best single value	–
12.4 Type of estimate (Optional)	–	
12.5 Population size inside the network Method used	–	

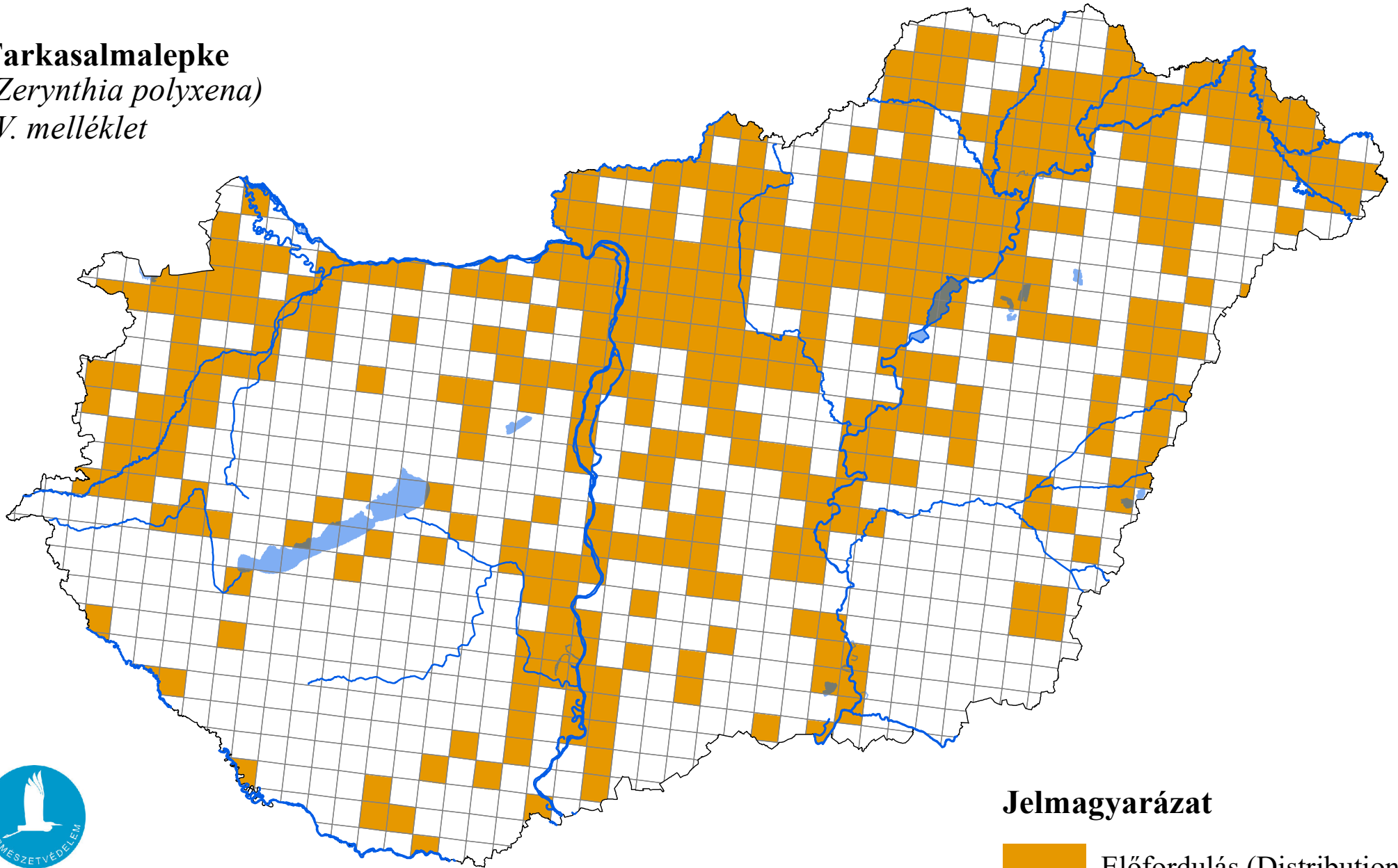
12.6 Short-term trend of population size within the network Direction	–
12.7 Short-term trend of population size within the network Method used	–
12.8 Short-term trend of habitat for the species within the network Direction	–
12.9 Short-term trend of habitat for the species within the network Method used	–
12.10 Additional information (Optional)	–

### 13. COMPLEMENTARY INFORMATION

13.1 Justification of % thresholds for trends	–
13.2 Trans-boundary assessment	–
13.3 Other relevant information	–

# Az élőhelyvédelmi irányelv 17. cikke alapján készített országjelentés 2025

**Farkasalmalepke**  
(*Zerynthia polyxena*)  
IV. melléklet



Forrás: Agrárminisztérium,  
Természetmegőrzési Főosztály

## Jelmagyarázat

